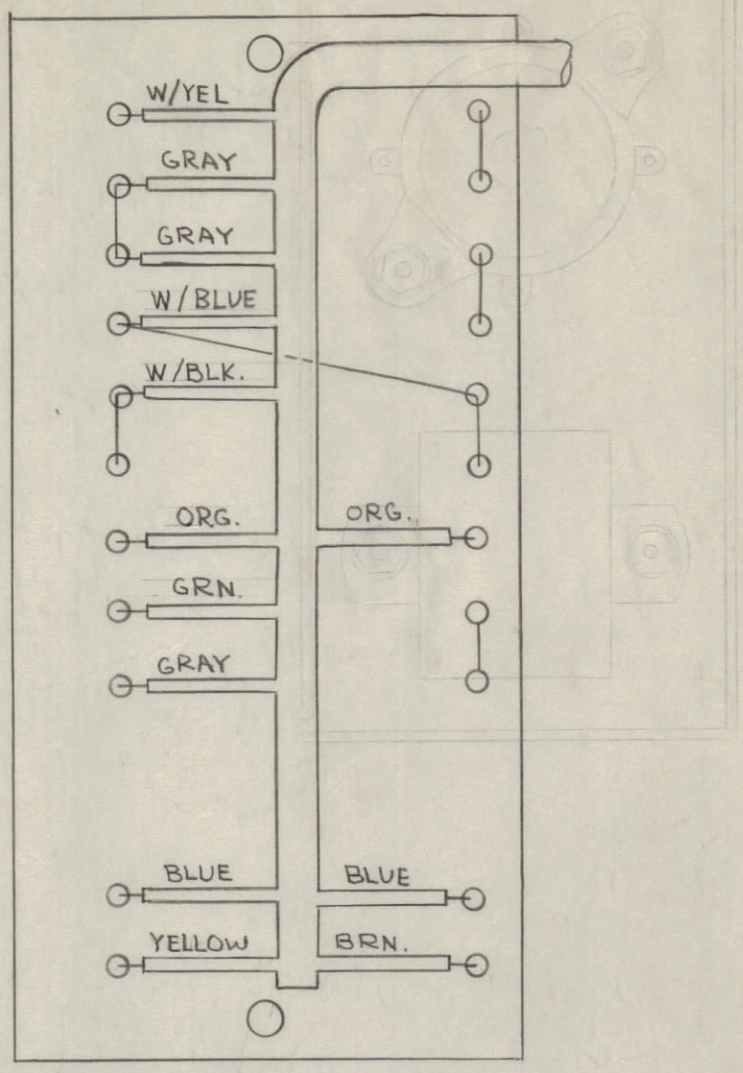
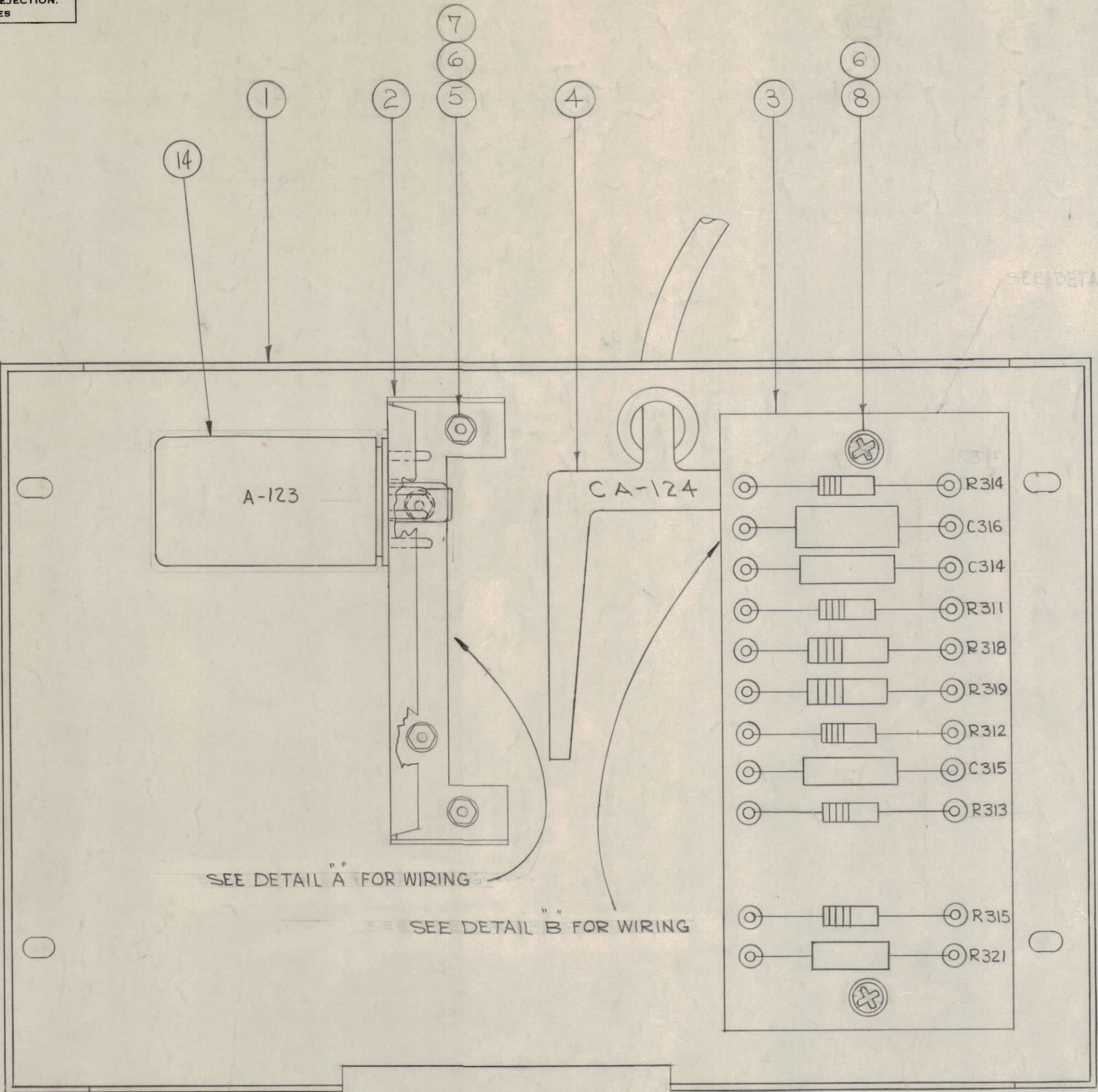


IF IT IS FOUND DESIRABLE TO CHANGE ANY TOLERANCE OR OTHER DETAIL SPECIFIED ON THIS DRAWING NOTIFY THE PURCHASER PROMPTLY.

MAXIMUM ALLOWABLE TOLERANCES HAVE BEEN DETERMINED AND DEVIATIONS WILL BE CAUSE FOR REJECTION. REMOVE ALL BURRS AND SHARP EDGES

WIRE NO	COLOR
14	WH./BLK.
22	WH./BLK.
7	GRAY
8	GRAY
9	GRAY
10	GREEN
11	GREEN
19	WHITE
12	ORANGE
4	BLUE
9	GRAY
20	VIOLET
1	WH./BLUE
2	YELLOW
6	WH./GRN.
21	WH./OR.
18	WH./YEL.
23	WH./YEL.



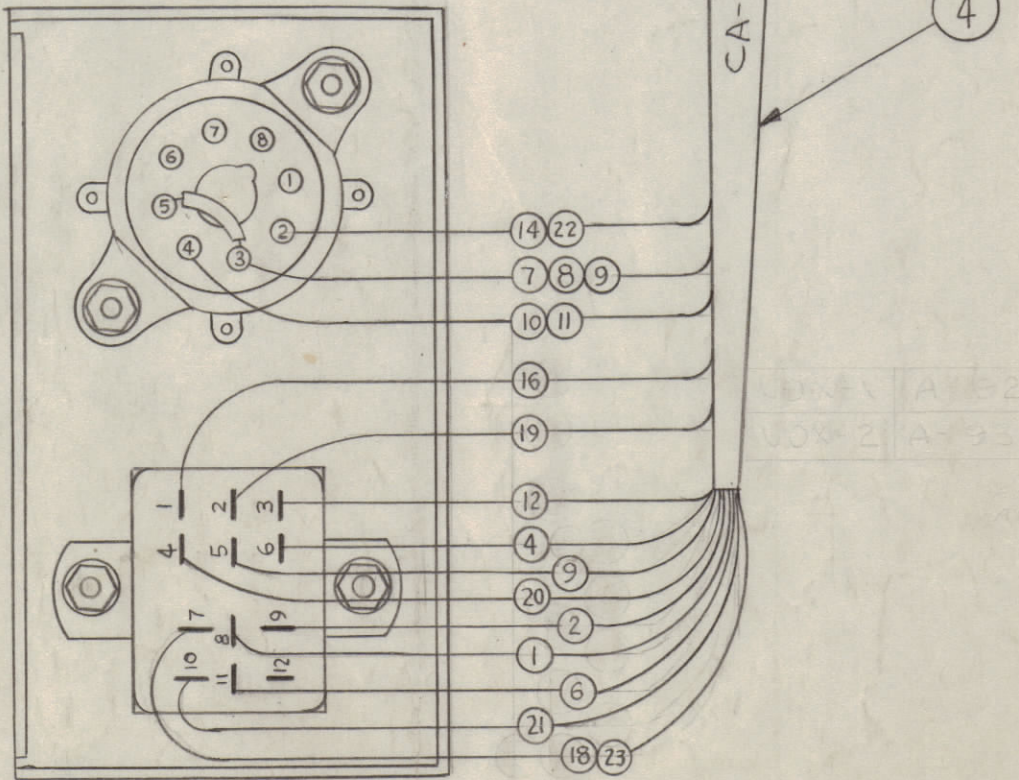
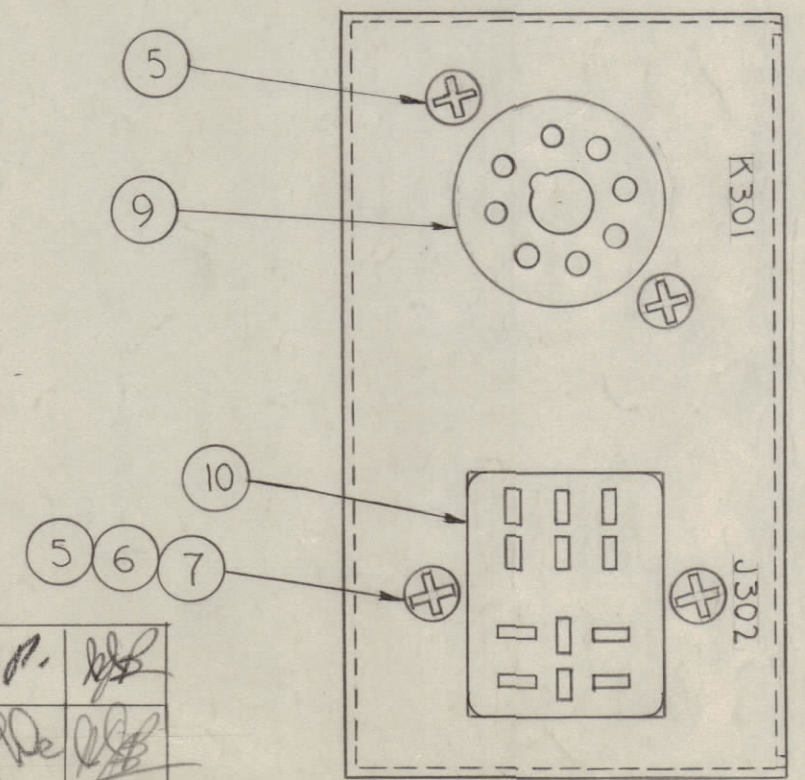
DETAIL-B

WIRE NO	COLOR
14	WH./BLK.
22	WH./BLK.
7	GRAY
8	GRAY
9	GRAY
10	GREEN
11	GREEN
19	WHITE
12	ORANGE
4	BLUE
9	GRAY
20	VIOLET
1	WH./BLUE
2	YELLOW
6	WH./GRN.
21	WH./OR.
18	WH./YEL.
23	WH./YEL.

SEE DETAIL "A" FOR WIRING

SEE DETAIL "B" FOR WIRING

A-635 C



FRONT VIEW DETAIL-A

REAR VIEW

ISSUE	ITEM	CHANGED FROM	DATE	CN. NO.	DRAFTS	CHECKER	ENG. APP.
C	3	ITEM (5) WAS SCBP06323N4	7-9-53	9523			
	2	MOD. VOX USED ON ASSY NO. WAS A-639					
	1	ITEM (1) WAS A-915					
B		ADDED-DETAIL A FB, ITEMS 9 TO 14, A-123	6-22-52	6470	JRB		
		ADDED-COLOR CHART					
		NICKEL WAS CADMIUM, ITEM 2 W/AC34					
A	1	REVISED AS TNC SPEC. S-258	5-3-53	1	AB		

TOLERANCES		SCALE:
ALL OTHERS	DEC. DIM. ± FRAC. DIM. ± ANGULAR DIM. ±	DRILL, PUNCH, COMMERCIAL STOCK SIZES AND MANUFACTURERS TOLERANCES ARE NOT INCLUDED.

REQ. PER UNIT	MODEL	PROJECT NO.	ASS'Y. NO.	DATE
1	VOX-1-2			
1	VOX-1-2	101	A0-107	12-30-53

REQ. ITEM	PART NO.	DESCRIPTION	SYMBOL	
1	14	A-123	RELAY, SENSITIVE	K301
X	13	BS-100	SOLDER, SOFT (ALL CONNECTIONS)	
X	12	PX-104-1-.022	INSULATION, SLEEVING	BLACK
X	11	WL-100-7	WIRE BUSS BAR 22 GA.	
1	10	JJ-118-2	RECEPTACLE, FEMALE	J302
1	9	TS-101-P01	SOCKET, OCTAL	XK301
2	8	SCBP0632BN6	SCREW, MACHINE	
8	7	NTH0632BN8	NUT, HEX.	
10	6	LWEO6MRN	WASHER, LOCK SPLIT	
8	5	SCBP0632BN4	SCREW, MACHINE	
1	4	CA-124	CABLE ASSY	
1	3	A-932	HEATER TERM. BD. ASSY.	
1	2	MS-326	BRACKET, RELAY	
1	1	MS-597	OVEN BRACKET, LEFT	

REQ. ITEM	PART NO.	DESCRIPTION	SYMBOL
#	#	THE TECHNICAL MATERIEL CORP. MAMARONECK, NEW YORK	
#	#	LEFT OVEN BRACKET ASSY.	
MATERIAL	WEIGHT PER PC.	VOX	
TYPE & TEMPER	C.D.D. 12-30-53		WDC
HEAT TREAT. SPEC.	DRAWN	ELEC. DES. APP.	MECH. DES. APP.
FINISH & SPEC. NO.	CHECKED	FINAL APPROVAL	
			A-635 C