

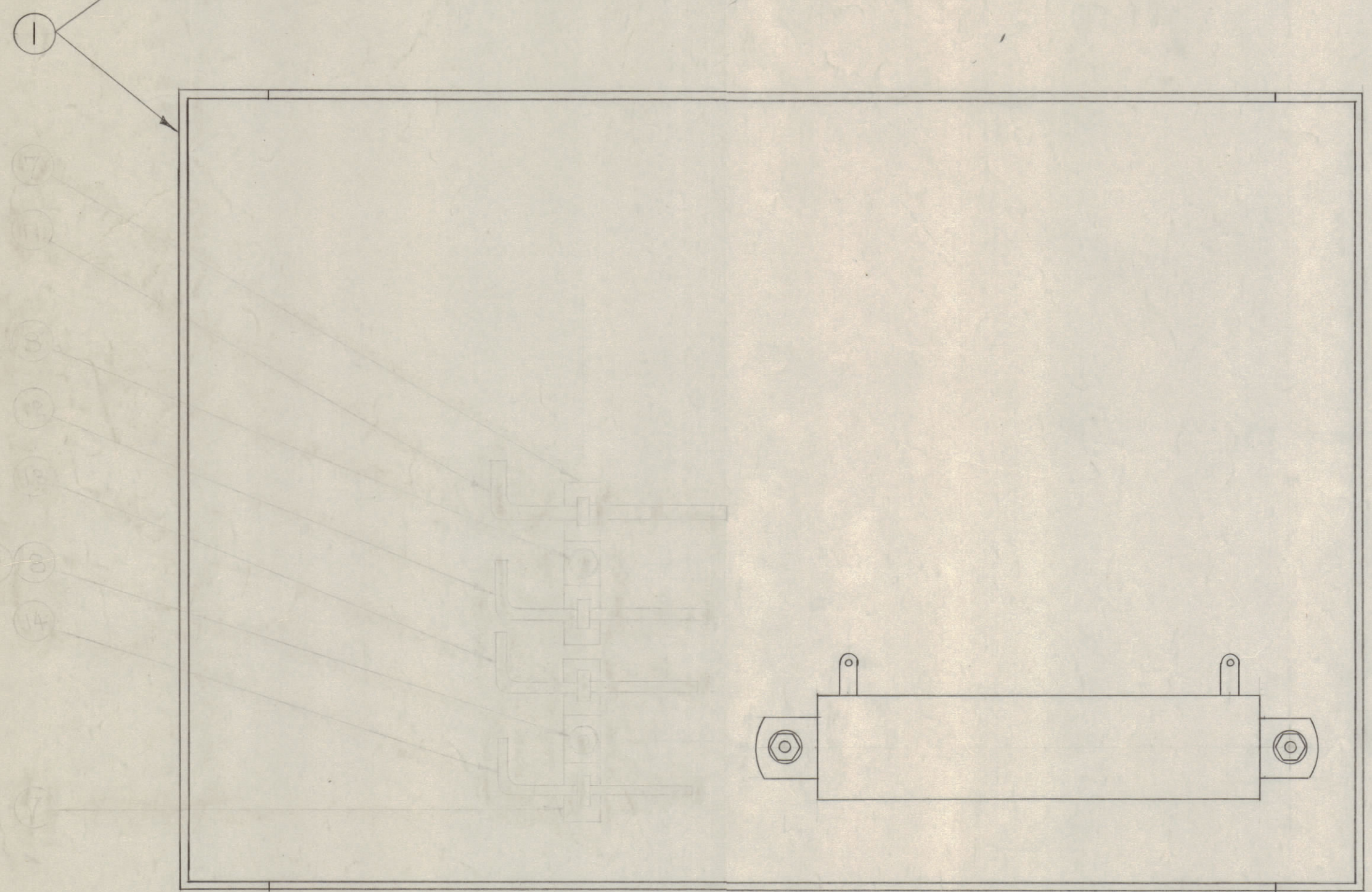
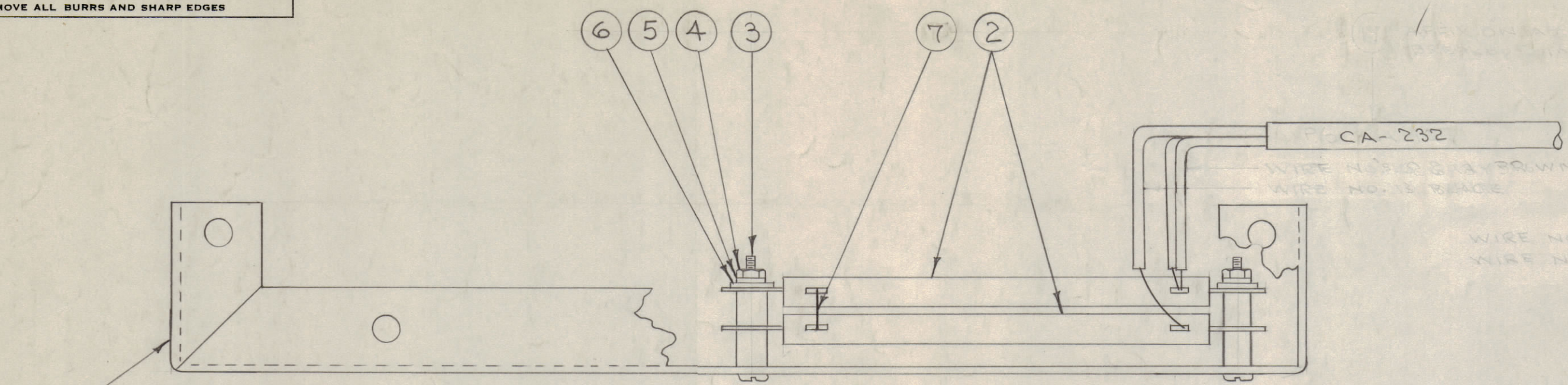
IF IT IS FOUND DESIRABLE TO CHANGE ANY TOLERANCE OR OTHER DETAIL SPECIFIED ON THIS DRAWING NOTIFY THE PURCHASER PROMPTLY.

MAXIMUM ALLOWABLE TOLERANCES HAVE BEEN DETERMINED AND DEVIATIONS WILL BE CAUSE FOR REJECTION. REMOVE ALL BURRS AND SHARP EDGES

NOTICE TO PERSONS RECEIVING THIS DRAWING

THE TECHNICAL MATERIEL CORPORATION claims proprietary right in the material disclosed hereon. This drawing is issued in confidence for engineering information only and may not be reproduced or used to manufacture anything shown hereon without permission from THE TECHNICAL MATERIEL CORPORATION to the user. This drawing is loaned for mutual assistance and is subject to recall at any time.

Property of:
THE TECHNICAL MATERIEL CORPORATION
MAMARONECK, NEW YORK



A-632 B

X 7	BS-100	SOLDER, SOFT (ALL CONNECTIONS)	
X 10	WL-100	WIRE, BUSS BAR 22 GA.	
X 15	WL-100-7	WIRE, BUSS BAR 22 GA.	
1 14	WR-100-4	WRENCH, HEX.	
1 13	WR-100-3	"	
1 12	WR-100-2	"	
1 11	WR-100-1	"	
2 10	NTH0832BN10	NUT, HEX.	
2 8	BS-100	SOLDER, SOFT (ALL CONNECTIONS)	
X 7	WL-100-7	WIRE, BUSS BAR 22 GA.	
2 6	NTH0832BN10	NUT, HEX.	
2 5	LWE08MRN	WASHER, LOCK SPLIT	
2 4	FW08HBN	" , FLAT	
2 3	SCBP0832BN26	SCREW, MACHINE	
2 2	RW-115-101-55	RESISTOR, FIXED	R 32 R 32
1 1	MS-598	OVEN BRACKET, RIGHT	

REQ. ITEM	PART NO.	DESCRIPTION	SYMBOL
#	#	THE TECHNICAL MATERIEL CORP. MAMARONECK, NEW YORK	
#	#	RIGHT OVEN BRACKET ASSY.	
#	#	VOX	
#	#	CDD. 12-29-53	
#	#	DRAWN	
#	#	ELEC. DES. APP.	
#	#	MECH. DES. APP.	
#	#	CHECKED	
#	#	FINAL APPROVAL	
#	#	A-632 B	

B 2	NICKEL PLATE WAS CADMIUM ADDED VOX 4,6 REF. NOTE DELETED	6-21-62	G470	SRG	file		
A 1	REV. IN ACC. WITH S-258	5/21/62	1	CS			
ISSUE	ITEM	CHANGED FROM	DATE	CN. NO.	DRAFTS	CHECKER	ENG. APP.
TOLERANCES		SCALE:					
ALL OTHERS	DEC. DIM. ± FRAC. DIM. ± ANGULAR DIM. ±	DRILL, PUNCH, COMMERCIAL STOCK SIZES AND MANUFACTURERS TOLERANCES ARE NOT INCLUDED.					

	VOX-6			6-21-62
	VOX-4			6-21-62
1	VOX-1			6-7-55
1	VOX-11	104	A-639	12-29-53
REQ. PER UNIT	MODEL	PROJECT NO.	ASS'Y. NO.	DATE
				USED ON