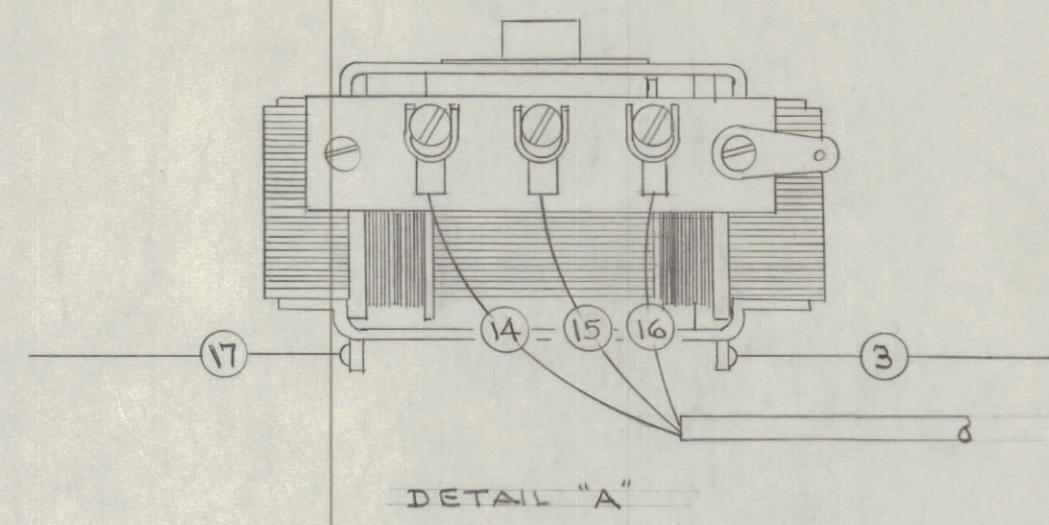
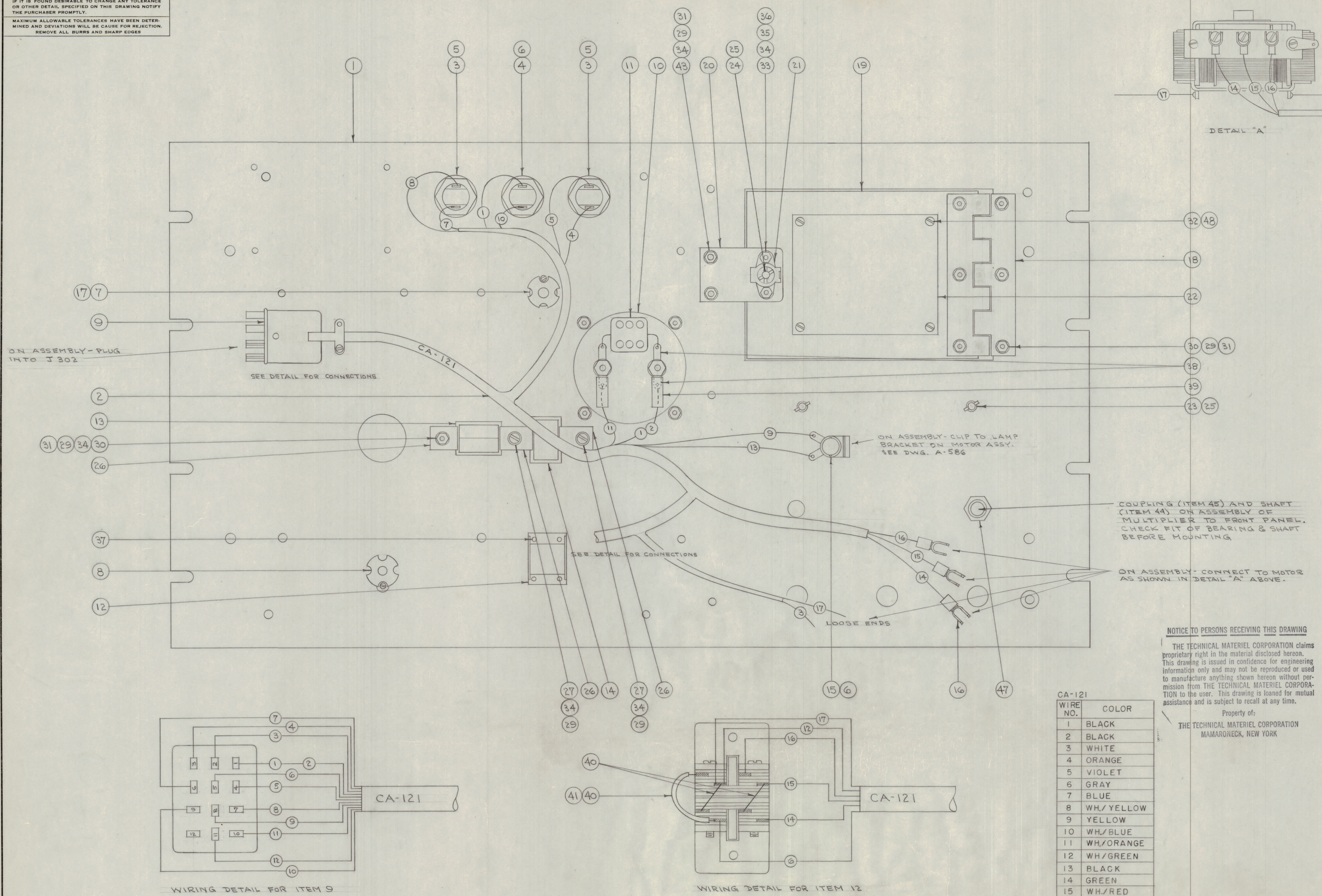


IF IT IS FOUND DESIRABLE TO CHANGE ANY TOLERANCE OR OTHER DETAIL SPECIFIED ON THIS DRAWING NOTIFY THE PURCHASER PROMPTLY.
 MAXIMUM ALLOWABLE TOLERANCES HAVE BEEN DETERMINED AND DEVIATIONS WILL BE CAUSE FOR REJECTION. REMOVE ALL BURRS AND SHARP EDGES



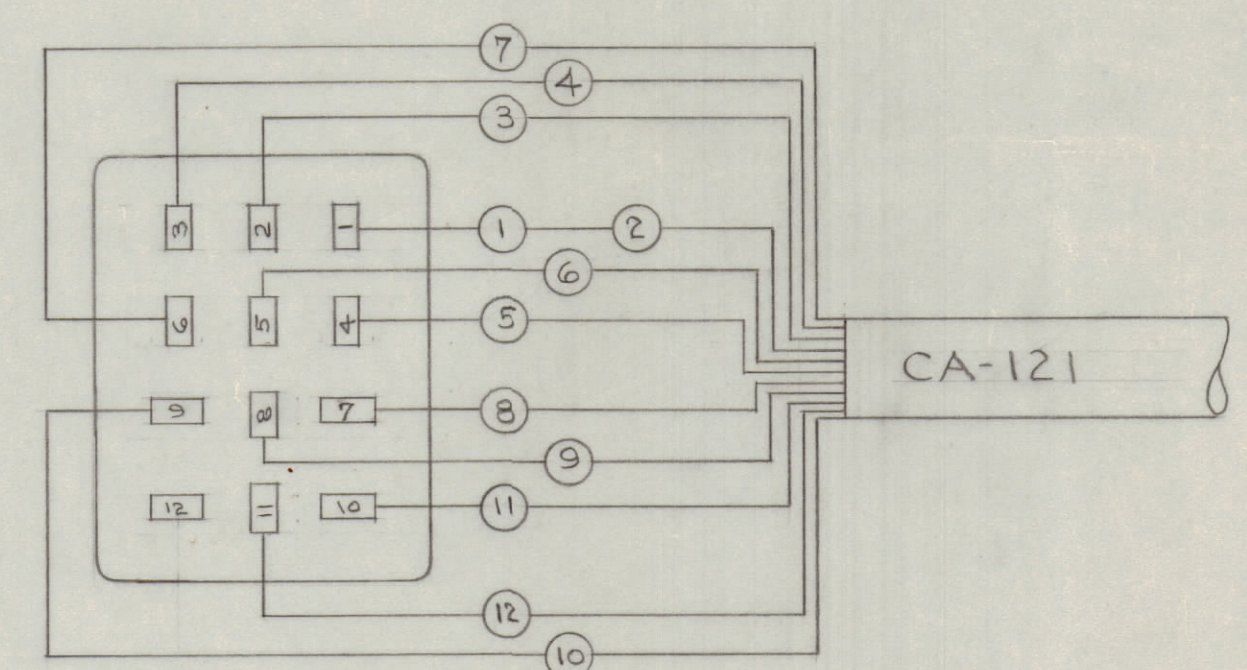
ON ASSEMBLY - PLUG INTO J 302

SEE DETAIL FOR CONNECTIONS

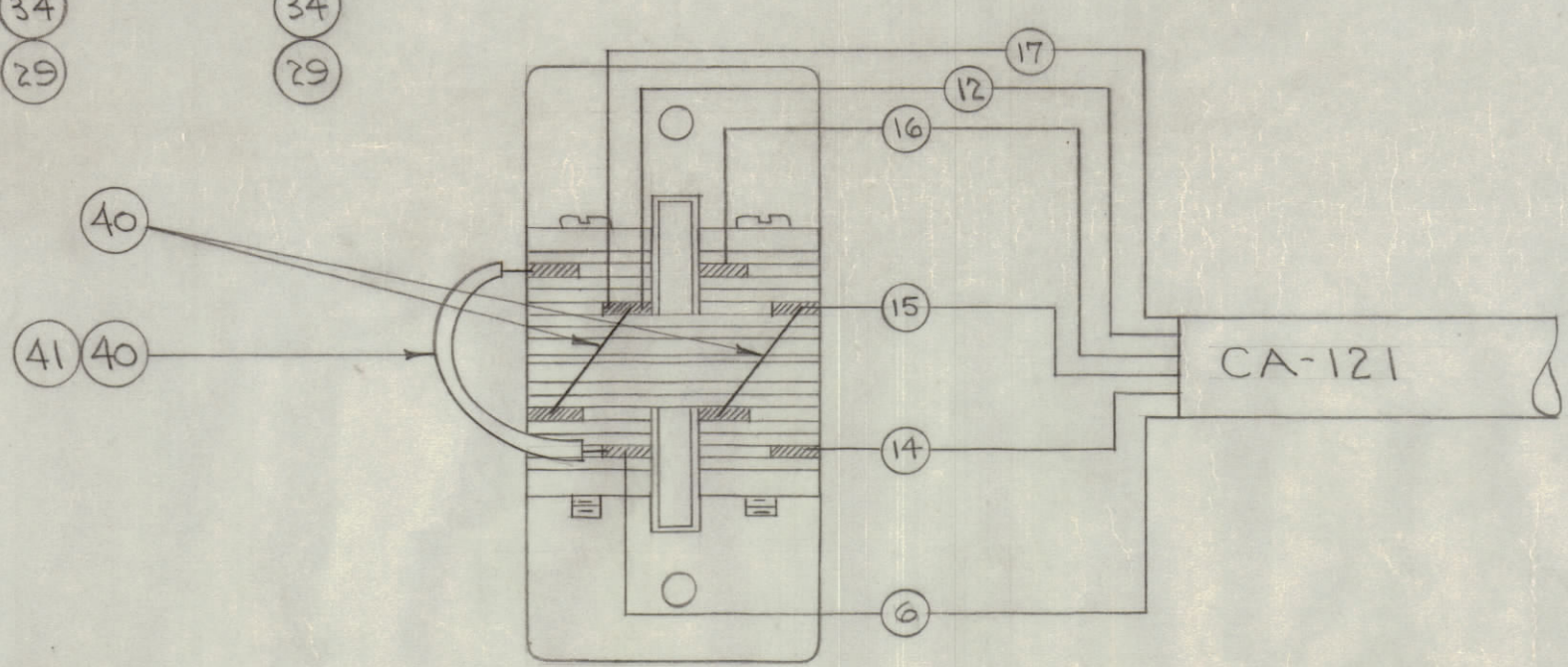
ON ASSEMBLY - CLIP TO LAMP BRACKET ON MOTOR ASSY. SEE DWG. A-586

COUPLING (ITEM 45) AND SHAFT (ITEM 44) ON ASSEMBLY OF MULTIPLIER TO FRONT PANEL. CHECK FIT OF BEARING & SHAFT BEFORE MOUNTING

ON ASSEMBLY - CONNECT TO MOTOR AS SHOWN IN DETAIL "A" ABOVE.



WIRING DETAIL FOR ITEM 9



WIRING DETAIL FOR ITEM 12

WIRE NO'S. ON THIS DRAWING CORRESPOND TO WIRE NO'S. ON CABLE DRAWING CA-121.

4	48	FNO2LRC	WASHER, FLAT
1	47	BB-101	BEARING, PANEL
X	46	BS-100	SOLDER, SOFT
1	45	MC-103-1	COUPLER
1	44	PM-199	SHAFT, EXT.
2	43	SCFS04408C7	SCREW, MACHINE
X	42	BS-100	SOLDER, SOFT (ALL CONNECTIONS)
X	41	PX-104-1-022	INSULATION, SLEEVING (BLK.)
X	40	WL-100-7	WIRE, BUSS BAR 22 GA.
2	39	PX-104-1-133	INSULATION, SLEEVING (BLK.)
4	38	TE-104-4	TERMINAL, LOCKING
4	37	SCFS0348BC5	SCREW, MACHINE
2	36	NTH04408C6	NUT, HEX.
2	35	LWS04MRC	WASHER, LOCK, SPLIT
6	34	FW04MRC	WASHER, FLAT
2	33	SCFS04408C4	SCREW, MACHINE

4	32	SC-110-1	SCREW, THD. CUTTING
9	31	NTH04408C8	NUT, HEX
7	30	SCFS04408C6	SCREW, MACHINE
11	29	LWE04MRC	WASHER, LOCK
—	28	—	DELETE
2	27	SCBS04408C3	SCREW, MACHINE
3	26	MS-370	CLAMP, LENS
3	25	PN-105	PIN, CROSS
1	24	FS-106-7	STUD, WING HEAD
2	23	FS-105-10	STUD, OVAL HEAD
1	22	NP-106	NAME PLATE, VMO
1	21	FS-100	SPRING UNIT
1	20	MS-302	BRACKET, FR. DOOR LOCK
1	19	MS-291	DOOR, FR. PANEL
1	18	HI-101	HINGE, DOOR
1	17	PM-196	PANEL BEARING, MOD.
3	16	TE-120-2	SPADE LUG
1	15	TS-107-1	SOCKET, BRACKET
1	14	PM-235	FIDUCIARY
1	13	PX-156	"
1	12	SW-103	SWITCH, MOTOR CONTROL
1	11	CM35A 103K	CAPACITOR, FIXED
1	10	MR-100-1	METER, PANEL
1	9	PL-102-1	CONNECTOR, MALE
1	8	A-415	DIAL LOCK ASSY.
1	7	A-427	CAL. CONT. ASSY. (SECTION A)
2	6	BL-101-44	LAMP
2	5	BI-100-51	LAMP
1	4	TS-106-1	SOCKET, LENS
2	3	TS-106-2	"
1	2	CA-121	CABLE ASSY.
1	1	MS-337	PANEL, FRONT (ENGRAVED)

CA-121

WIRE NO.	COLOR
1	BLACK
2	BLACK
3	WHITE
4	ORANGE
5	VIOLET
6	GRAY
7	BLUE
8	WH./YELLOW
9	YELLOW
10	WH./BLUE
11	WH./ORANGE
12	WH./GREEN
13	BLACK
14	GREEN
15	WH./RED
16	LT BLUE
17	WH./GREEN

NOTICE TO PERSONS RECEIVING THIS DRAWING
 THE TECHNICAL MATERIEL CORPORATION claims proprietary right in the material disclosed hereon. This drawing is issued in confidence for engineering information only and may not be reproduced or used to manufacture anything shown hereon without permission from THE TECHNICAL MATERIEL CORPORATION to the user. This drawing is loaned for mutual assistance and is subject to recall at any time.
 Property of:
 THE TECHNICAL MATERIEL CORPORATION
 MAMARONECK, NEW YORK

ISSUE	ITEM	CHANGED FROM	DATE	CN. NO.	DRAFTS	CHECKER	ENG. APP.
TOLERANCES							
SCALE:							
ALL OTHERS	DEC. DIM. ±	DRILL PUNCH COMMERCIAL STOCK SIZES AND MANUFACTURERS TOLERANCES ARE NOT INCLUDED.					
	FRAC. DIM. ±						
	ANGULAR DIM. ±						

1	VOX	101	A-426	12-29-53
REQ. PER UNIT	MODEL	PROJECT NO.	ASSY. NO.	DATE
USED ON				

REQ. ITEM	PART NO.	DESCRIPTION	SYMBOL
THE TECHNICAL MATERIEL CORP. MAMARONECK, NEW YORK			
FRONT PANEL SUB ASSY.			
MATERIAL WEIGHT PER PC. VOX			
TYPE & TEMPER. CD. 1-12-54			
HEAT TREAT. SPEC. DRAWN ELEC. DES. APP. MECH. DES. APP.			
FINISH & SPEC. NO. CHECKED FINAL APPROVAL			
A-631			