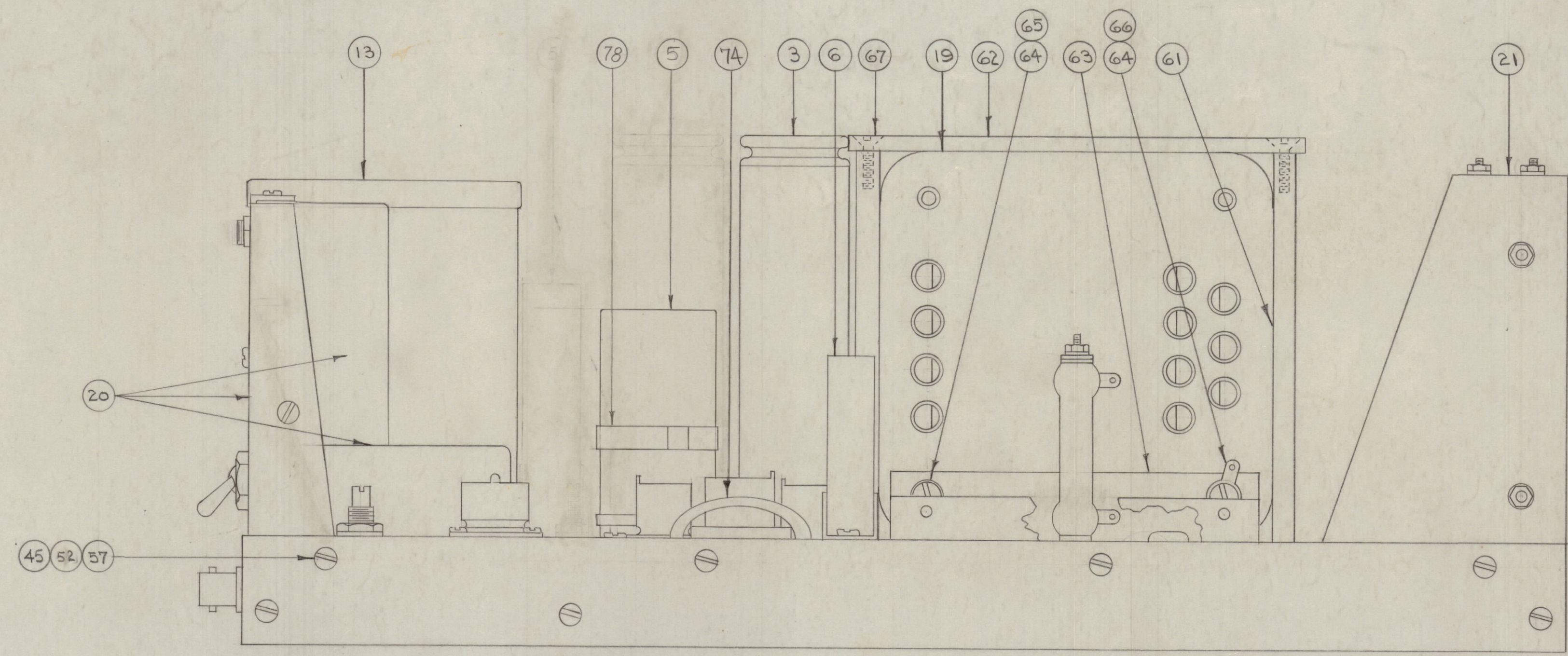
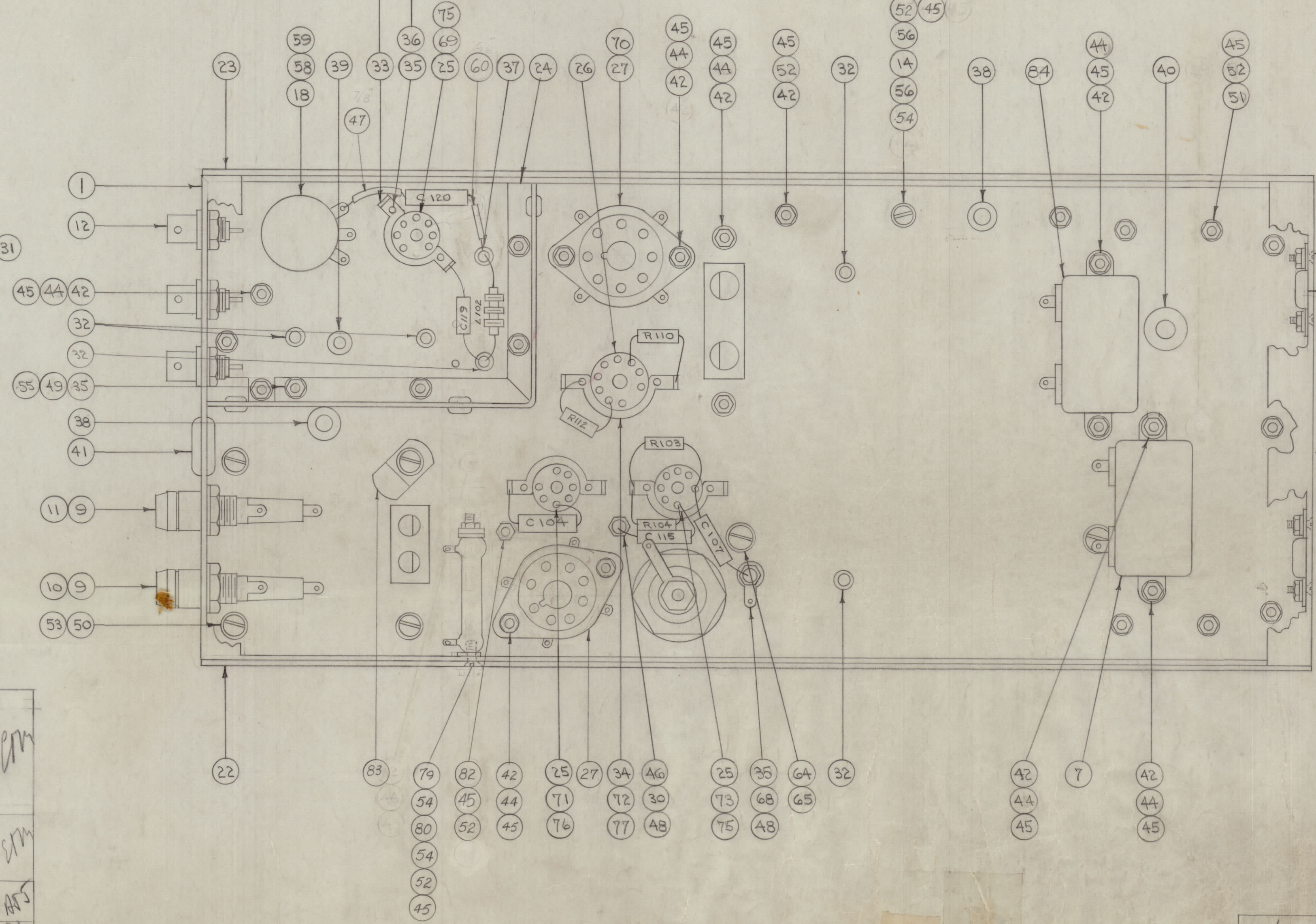


IF IT IS FOUND DESIRABLE TO CHANGE ANY TOLERANCE OR OTHER DETAIL, SPECIFIED ON THIS DRAWING NOTIFY THE PURCHASER PROMPTLY.
 MAXIMUM ALLOWABLE TOLERANCES HAVE BEEN DETERMINED AND DEVIATIONS WILL BE CAUSE FOR REJECTION. REMOVE ALL BURRS AND SHARP EDGES.



ALL 7 PIN SOCKETS
 ALL 7&9 PIN SOCKETS



2	67	SCFS1032BNG	SCREW, MACHINE		1	66	TE-104-4	TERMINAL, LOCKING	
1	68	TE-104-1	TERMINAL, LOCKING		3	65	LWE10MRN	WASHER, LOCK	
1	69	6AQS	TUBE, ELECTRON	V105	4	64	SCBS1032BNG	SCREW, MACHINE	
1	70	5V4	"	V101	1	63	MS-297	BRACKET, TRANS.	
1	71	OA2	"	V102	1	62	PM-206	SUPPORT ROD, TRANS.	
1	72	12AU7	"	V104	2	61	PM-205	SUPPORT, TRANS.	
1	73	6BE6	"	V103	X	60	PX-104-3-022	INSULATION, SLEEVING (RED)	
1	74	CU-100-3	HOLDER, TUBE		1	59	NTH3732BNG	NUT, HEX	
2	75	TS-102-U02	SHIELD, TUBE		1	58	LW13TLRN	WASHER, LOCK	
1	76	TS-102-U03	"		13	57	SCFS0632BNS	SCREW, MACHINE	
1	77	TS-103-U02	"		2	56	WA-102-4	WASHER, FIBER	
1	78	CU-118-15	CLAMP, CONDENSOR		A	55	NTH04A0BNS	NUT, HEX	
1	79	RW-109-38	RESISTOR, FIXED, W.W. 25K-10W	R118	1	54	SCBS0632BNS	SCREW, MACHINE	
1	80	SCFS0632BNS	SCREW, MACHINE		4	53	LWE08MRN	WASHER, LOCK	
	81	DELETED			39	52	LWE06MRN	WASHER, LOCK	
	82	DELETED			6	51	SCBS0632BNS	SCREW, MACHINE	
1	83	CU-102-2	CLAMP, G TYPE		4	50	SCBS0832BNG	SCREW, MACHINE	
1	84	CP53BIEF104K	CAPACITOR, FIXED	C116	A	49	LWE04MRN	WASHER, LOCK	
					2	48	TE-102-2	TERMINAL, TURRET	
X	47	PX-1042-022	INSULATION, SLEEVING (YELL)		1	46	SCBS0440BNS	SCREW, MACHINE	
39	45	NTH0632BNS	NUT, HEX		12	44	LWS06MRN	WASHER, LOCK	
1	43	RC20GF224K	RESISTOR, FIXED	R112	1	42	EY-102-6	"	
19	42	SCBS0632BNS	SCREW, MACHINE		1	41	EY-102-15	GROMMET, ELASTIC	
1	40	EY-102-6	"		1	39	EY-102-2	"	
1	38	EY-102-5	"		1	37	CL-101-4	CHOKE, R.F.	L102
8	36	LWS04MRN	WASHER, LOCK		8	35	SCBS0440BNS	SCREW, MACHINE	
1	34	NT-101-5	NUT, STRAP						

3	33	NT-101-4	NUT, STRAP	
4	32	TE-108-1	STAND OFF, RIVET TYPE	
8	31	NTH04A0BNG	NUT, HEX	
9	30	LW104MRN	WASHER, LOCK	
8	29	SCFS0440BNS	SCREW, MACHINE	
4	28	FS-100	SPRING CLIP	
2	27	TS-101-P01	SOCKET, OCTAL	XV101 XV102
1	26	TS-103-P01	SOCKET, MIN. 9 PIN	XV104
3	25	TS-102-P01	"	XV103 3-5
1	24	A-624	SHIELD ASSY. P.S.	
1	23	MS-599	SIDE PLATE ASSY., LEFT	
1	22	MS-303	SIDE PLATE ASSY., RIGHT	
1	21	A-590	P.S. PANEL SUB ASSY.	
1	20	A-594 FOR VOX-12 A-2091 FOR VOX-3A	XTAL. SWITCH ASSY.	
1	19	TF-105	TRANS., FIL. & POWER	T101
1	18	RV4ATS4503B	RESISTOR, VARIABLE	R116
1	17	RC20GF105K	RESISTOR, FIXED	R110
1	16	RC20GF104K	"	R104
1	15	RC20GF104K	"	R103
1	14	RV-109-47	"	R101
1	13	TF-5001	REACTOR, FILTER	L101
3	12	UG-625/U	CONNECTOR	J102 3-4
1	11	FU-100-2	FUSE	F102
1	10	FU-100-3	FUSE	F101
2	9	FH-100-2	HOLDER, FUSE	XF101- 102
1	8	CM20B102K	CAPACITOR, FIXED	C115
1	7	CP53BIEF504K	"	C114
1	6	CP693IEF504K	"	C113
1	5	CE52F200R	"	C102A C102B
1	4	CM20B050M	"	C107
1	3	CPA02CF405K	"	C101
3	2	CM35B103K	"	C104 119-120
1	1	MS-336	CHASSIS, P.S. (LETTERED)	LD-174

NOTICE TO PERSONS RECEIVING THIS DRAWING
 THE TECHNICAL MATERIEL CORPORATION claims proprietary right in the material disclosed herein. This drawing is issued in confidence for engineering information only and may not be reproduced or used to manufacture anything shown herein without permission from THE TECHNICAL MATERIEL CORPORATION to the user. This drawing is loaned for initial assistance and is subject to recall at any time.

Property of:
 THE TECHNICAL MATERIEL CORPORATION
 MAMARONECK, N.Y.

1	VOX-4				
1	VOX-3				
1	VOX-2			6-7-55	
1	VOX-1	101	A-625	12-14-53	
REQ. PER UNIT	MODEL	PROJECT NO.	ABBY. NO.	DATE	
					USED ON

3	ITEM 82 SCBS0632BNS DELETED						
2	ITEM 58 WAS LWE32LSC						
11	ITEM 57 QUAN WAS 12						
10	ITEM 51 QUAN WAS 3						
9	ITEM 29 WAS SCFS0440BNS						
8	ITEM 23 WAS A-919						
7	ITEM 22 WAS A-518						
6	ITEM 20 WAS A554						
5	ITEM 18 WAS RV4ATS4303D						
4	ITEM 14 WAS RW104-47						
3	ITEM 8 WAS CPAD2DF405V						
2	ITEM 3 WAS CP53CFE405V						
1	ITEM 2 WAS CM35B103K						
6	ITEM 8 DELETED						
5	ITEM 74 WAS CU-100-5						
4	ITEM 14 WAS RW-104						
3	ITEM 4 WAS CM20A050M						
2	ITEM 1 WAS CPAD2DF405V						
1	CHANGED ALL HARDWARE TO NICKEL						
3	ITEM 84 ADDED						
2	C116 DELETED FROM ITEM 7 AND ADDED TO ITEM 84						
1	ITEM 7, 11 RED. WAS 2 REQ.						
A	1 REVISED AS TRG SPEC. 5280						
ISSUE	ITEM	CHANGED FROM	DATE	CN. NO.	DRAFTS	CHECKER	ENG. APP.
		TOLERANCES	SCALE:				
ALL	DEC. DIM. ±						
OTHERS	FRAC. DIM. ±						
	ANGULAR DIM. ±						
		DRILL, PUNCH, COMMERCIAL STOCK SIZES AND MANUFACTURERS TOLERANCES ARE NOT INCLUDED.					

A-626 D

REQ. ITEM	PART NO.	DESCRIPTION	SYMBOL
STOCK SIZE			
MATERIAL WEIGHT PER FC			
TYPE & TEMPER			
HEAT TREAT. SPEC.			
FINISH & SPEC. NO.			
THE TECHNICAL MATERIEL CORP. MAMARONECK, NEW YORK			
HDWE. & COMPONENT ASSY., POWER SUPPLY VOX			
DRAWN: CDD 12-15-53			
ELEC. DES. APP. MECH. DES. APP.			
CHECKED: HAD			
FINAL APPROVAL: HAD			
A-626 D			