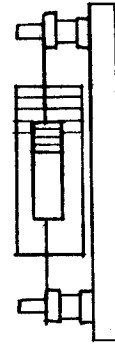
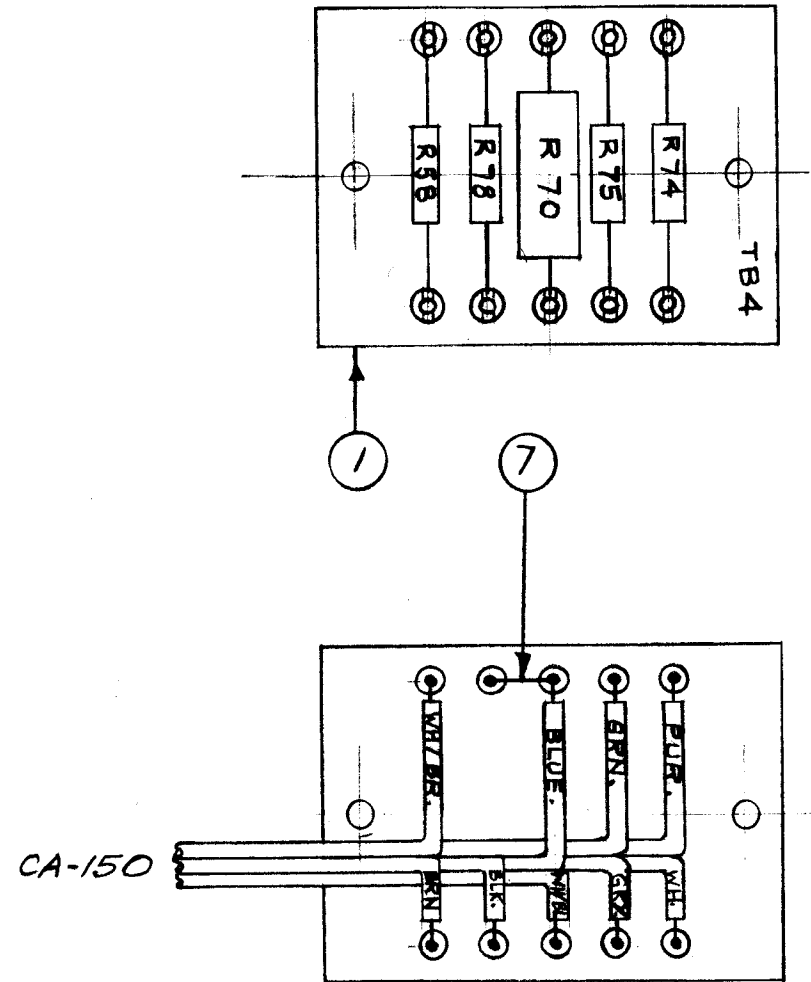


IF IT IS FOUND DESIRABLE TO CHANGE ANY TOLERANCE OR OTHER DETAIL SPECIFIED ON THIS DRAWING NOTIFY THE PURCHASER PROMPTLY.

MAXIMUM ALLOWABLE TOLERANCES HAVE BEEN DETERMINED AND DEVIATIONS WILL BE CAUSE FOR REJECTION. REMOVE ALL BURRS AND SHARP EDGES

A-614 B



| REQ.  | ITEM | PART NO.   | DESCRIPTION       | SYMBOL      |
|-------|------|------------|-------------------|-------------|
| 1 3/4 | 7    | WL-100-7   | WIRE, BUSS 22 GA. |             |
| X     | 6    | BS-100     | SOLDER, SOFT      |             |
| 1     | 5    | RC20GF474J | RESISTOR, FIXED   | R78         |
| 2     | 4    | RC20GF101J | RESISTOR, FIXED   | R75<br>R-74 |
| 1     | 3    | RC20GF471J | RESISTOR, FIXED   | R70         |
| 1     | 2    | RC20GF224J | RESISTOR, FIXED   | R58         |
| 1     | 1    | LD132/A353 | TERM. BD. NO. 4   |             |

|                    |  |  |                 |
|--------------------|--|--|-----------------|
| STOCK SIZE         |  | THE TECHNICAL MATERIEL CORP.<br>MAMARONECK. NEW YORK |                 |
| MATERIAL           |  | TERM. BD. NO. 4                                      |                 |
| WEIGHT PER PC.     |  | COMPONENT SUB-ASS'Y.                                 |                 |
| TYPE & TEMPER      |  | 12-8-53  | WJZ             |
| HEAT TREAT. SPEC.  |  | Drawn  | Elec. Des. App. |
| FINISH & SPEC. NO. |  | Checked  | Mech. Des. App. |
|                    |  | FINAL APPROVAL                                       |                 |
|                    |  | A-614 B  |                 |

| B          | ITEM 1 WAS LD132/A144       | 9-26-74   | 21177 | G.D.L.  | Ch     | Ch      |           |
|------------|-----------------------------|---|-------|---------|--------|---------|-----------|
| A          | LD132 ADD ITI; K WAS J1/R25 | 10.25.66  | 17100 | W.W.    | W.W.   | W.W.    |           |
| ISSUE      | ITEM                        | CHANGED FROM  | DATE  | CN. NO. | DRAFTS | CHECKER | ENG. APP. |
| TOLERANCES |                             | SCALE: $\frac{1}{16}$   |       |         |        |         |           |
| ALL OTHERS |                             | DRILL, PUNCH, COMMERCIAL STOCK SIZES AND MANUFACTURERS TOLERANCES ARE NOT INCLUDED. |       |         |        |         |           |

| 1              | XFK   | A-680       | 12-8-53    |
|----------------|-------|-------------|------------|
| AM'T. PER UNIT | MODEL | PROJECT NO. | ASS'Y. NO. |
|                |       |             |            |
| USED ON        |       |             |            |