

IF IT IS FOUND DESIRABLE TO CHANGE ANY TOLERANCE OR OTHER DETAIL SPECIFIED ON THIS DRAWING NOTIFY THE PURCHASER PROMPTLY.

A-647

MAXIMUM ALLOWABLE TOLERANCES HAVE BEEN DETERMINED AND DEVIATIONS WILL BE CAUSE FOR REJECTION. REMOVE ALL BURRS AND SHARP EDGES

REQ. PER UNIT

USED ON

MODEL

PROJECT NO.

ASS'Y. NO.

DATE

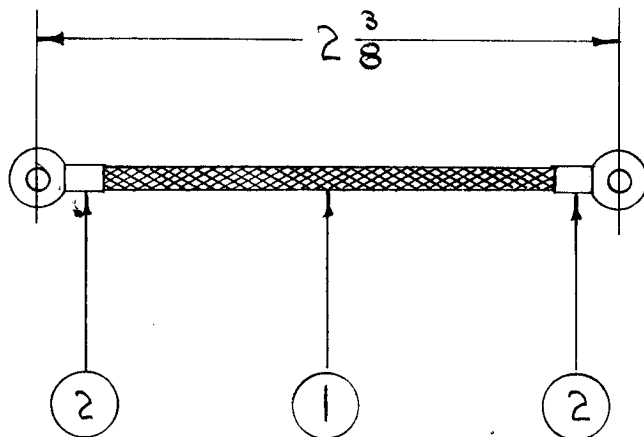
2

TAC-1

132

A-646

12-28-53



X	3	BS-100	SOLDER, SOFT	
2	2	TE-141-1	TERMINAL LUG	
1 13/16	1	WL-103-4	SHIELD, FLEXIBLE	
REQ.	ITEM	PART NO.	DESCRIPTION	SYMBOL
			THE TECHNICAL MATERIEL CORP.	
STOCK SIZE			MAMARONECK. NEW YORK	
			GROUND LEAD ASSY.	
MATERIAL			TAC-1	
WEIGHT PER PC.			C.D.D	
TYPE & TEMPER			QPB	WDE
HEAT TREAT. SPEC.			DRAWN	ELEC. DES. APP.
FINISH & SPEC. NO.			QPB	WDE
			CHECKED	FINAL APPROVAL
			A-647	

ISSUE ITEM CHANGED FROM DATE CN. NO. DRAFTS CHECKER ENG. APP.

TOLERANCES

SCALE

ALL OTHERS

DEC. DIM. ±  
FRAC. DIM. ± 1/8  
ANGULAR DIM. ±

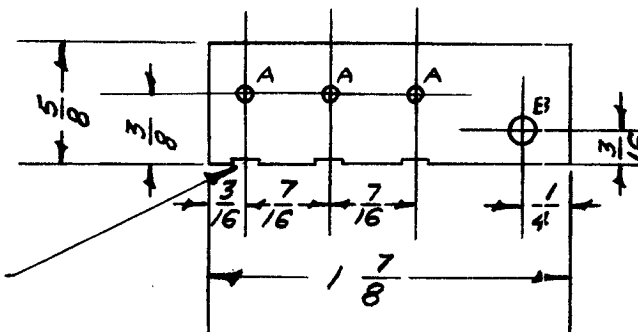
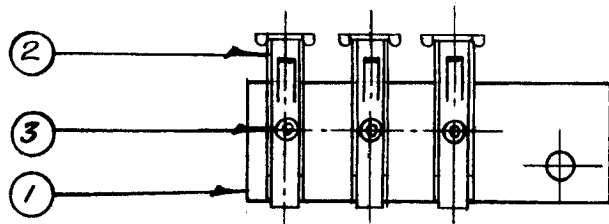
DRILL, PUNCH, COMMERCIAL STOCK SIZES AND MANUFACTURERS TOLERANCES ARE NOT INCLUDED.

IF IT IS FOUND DESIRABLE TO CHANGE ANY TOLERANCE OR OTHER DETAIL SPECIFIED ON THIS DRAWING NOTIFY THE PURCHASER PROMPTLY.

A-649

MAXIMUM ALLOWABLE TOLERANCES HAVE BEEN DETERMINED AND DEVIATIONS WILL BE CAUSE FOR REJECTION. REMOVE ALL BURRS AND SHARP EDGES

USED ON				
AMT. PER UNIT	MODEL	PROJECT NO.	ASS'Y. NO.	DATE
1	DDR-2		CA-101	1-25-54



1/32 DEEP X 1/8 WIDE  
(3 REQ.)

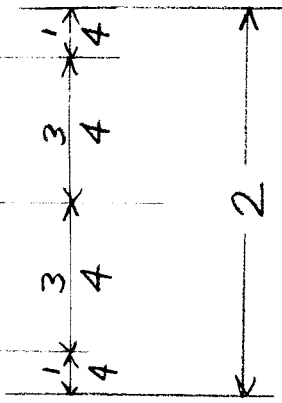
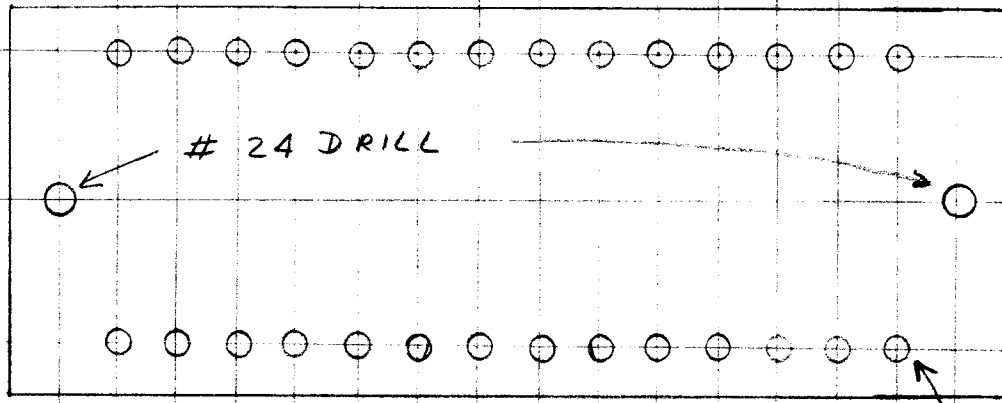
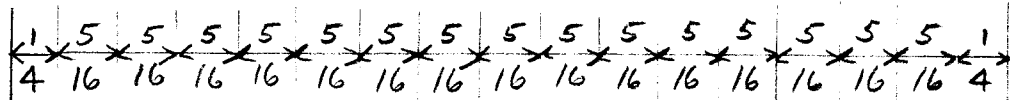
MACHINING PLAN

A = #51 DR. (.067) 3 REQ.  
B = #27 DR. (.144) 1 REQ.

3	3	EY-100-4	EYELET	
3	2	TE-136	LUG	
1	1	PX-206	BOARD (NO DRAWING)	
REQ.	ITEM	PART NO.	DESCRIPTION	SYMBOL
3/32" THK.			THE TECHNICAL MATERIEL CORP.	
STOCK SIZE			MAMARONECK. NEW YORK	
PHENOLIC		//	FANNING STRIP BOARD	
MATERIAL		WEIGHT PER PC.	ASSEMBLY	
XXXP			16 1-25-54	
TYPE & TEMPER			DRAWN	ELEC. DES. APP. MECH. DES. APP.
//			CHECKED	
HEAT TREAT. SPEC.			FINAL APPROVAL	
BLACK			A-649	
FINISH & SPEC. NO.				

ISSUE	ITEM	CHANGED FROM	DATE	CN. NO.	DRAFTS	CHECKER	ENG. APP.
TOLERANCES							
SCALE FULL			DRILL, PUNCH, COMMERCIAL STOCK SIZES AND MANUFACTURERS TOLERANCES ARE NOT INCLUDED.				
ALL OTHERS		DEC. DIM. ± FRAC. DIM. ± ANGULAR DIM. ±					

A-650



$5\frac{3}{16}$

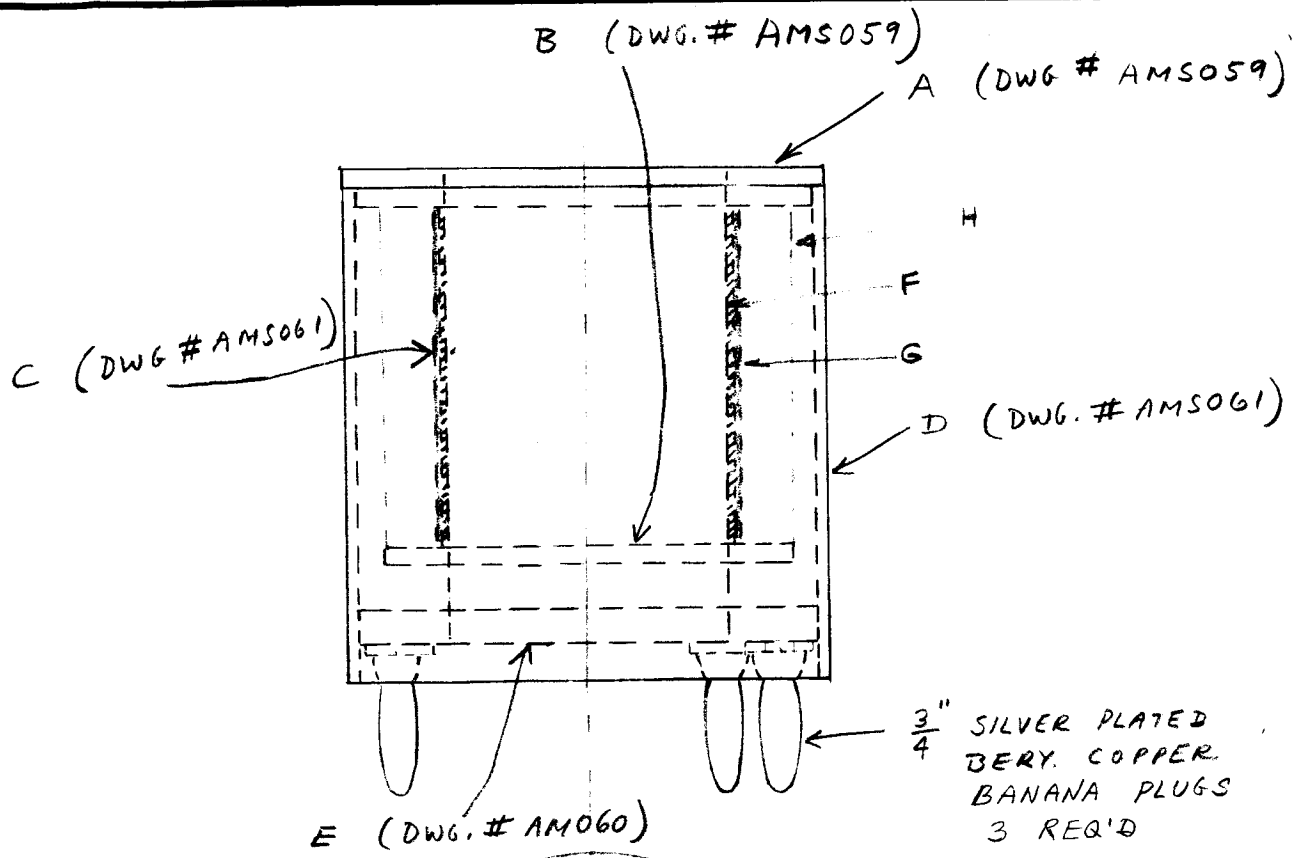
#33 DRILL  
28 TERMINAL  
MOUNTING  
HOLES REQ'D

USE: XXX BAKELITE  $\frac{1}{8}$  THK.  
CTC S1245 D TERMINALS  
MAKE FOUR PIECES PER UNIT

WAS AMS093  
1/25/54

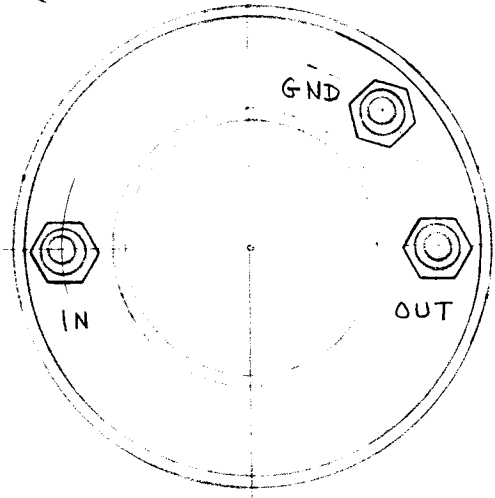
DATE 5-2-51	TERMINAL BOARD DIVERSITY CONTROL UNIT MODEL DCO	THE TECHNICAL MATERIEL CORPORATION		
DRN. P. B.				MAMARONECK, NEW YORK
CHKD.		SHEET	OF	NO. A-650
APPD. <i>[Signature]</i>				

A-651



$\frac{3}{4}$ " SILVER PLATED  
BERY. COPPER  
BANANA PLUGS  
3 REQ'D

BOTTOM  
VIEW OF COIL



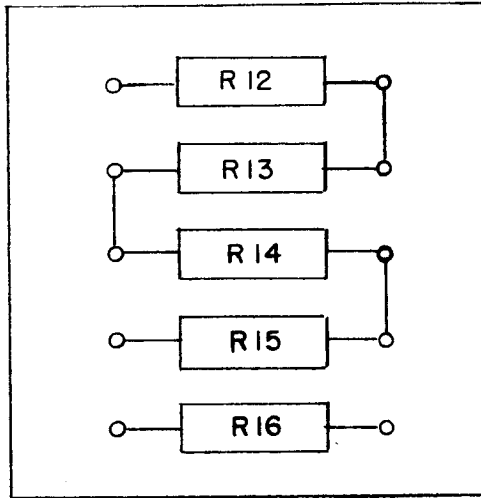
Note: bakelite parts  
held by "Weldex"  
glue.

COMPONENTS      REQ'D

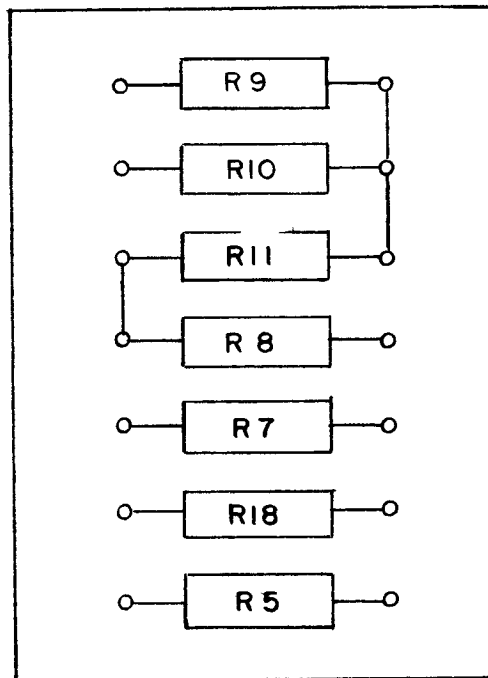
- 1 EACH      A
- 1 EACH      B
- 1 EACH      C
- 1 EACH      D
- 1 EACH      E
- 3 EACH       $\frac{3}{4}$  S.P. BANANA PLUGS
- $\frac{3}{4}$  LB #34 ENAMELED WIRE      N = 12000 TURNS      1500 ohms.
- 2 EACH      2-56 x  $\frac{3}{16}$  B.H. SCREWS      N.P.
- 3 EACH      6-32 NUTS      N.P.
- 3 EACH      #6 LOCK WASHERS
- 3 EACH      ZERICK #11A-6 LUGS
- .002 x  $1\frac{3}{4}$  x 5" BRASS SHIM STOCK      F
- .001 x  $1\frac{3}{4}$  wide Kraft insulating paper, dielectric strength 475 volts per mil
- Insulation - B1 Pressure sensitive TAPS - H

DATE JAN 24, 1951	ASSEMBLY - MAGNETIC DIODE COIL TAK-1	THE TECHNICAL MATERIEL CORPORATION MAMARONECK, NEW YORK		
DRN. P.B.				
CHKD. A.R.P.				
APPD. <i>fu</i>				
		SHEET 1	OF 1	NO. A-651
		WAS AMS062		

A-652



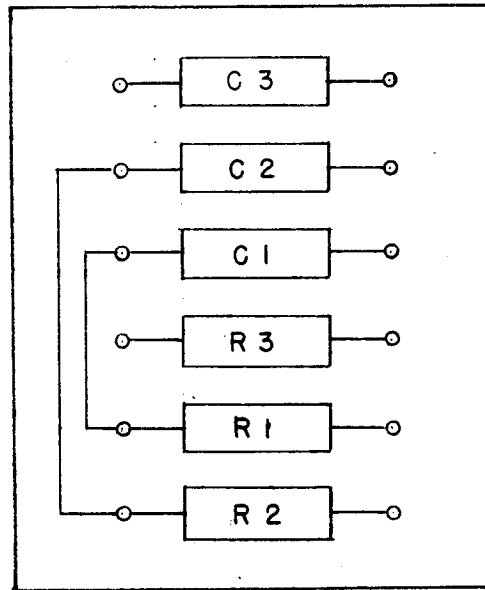
TB-1



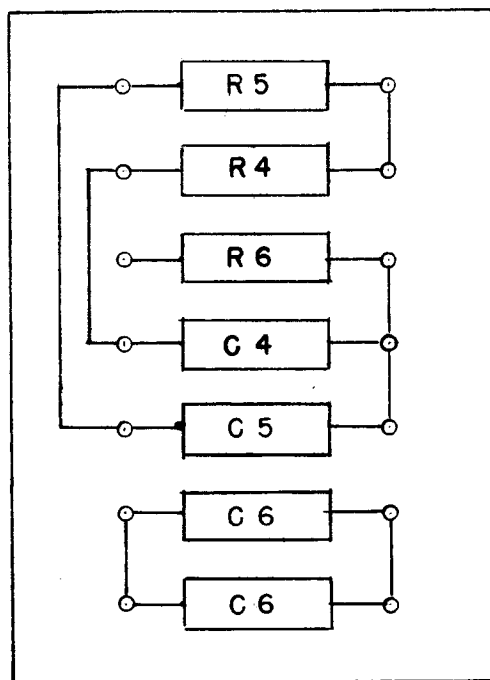
TB-2

TERMINAL BOARD CARRIER TELEGRAPH TRANSMITTER MODEL TAK-1		
THE TECHNICAL MATERIEL CORPORATION MAMARONECK, NEW YORK		
DATE	2-20-51	CHKD. <i>AKB</i>
DRAWN	<i>JRW</i>	APP'D. <i>AK</i>
SHEET	OF	10 A-652

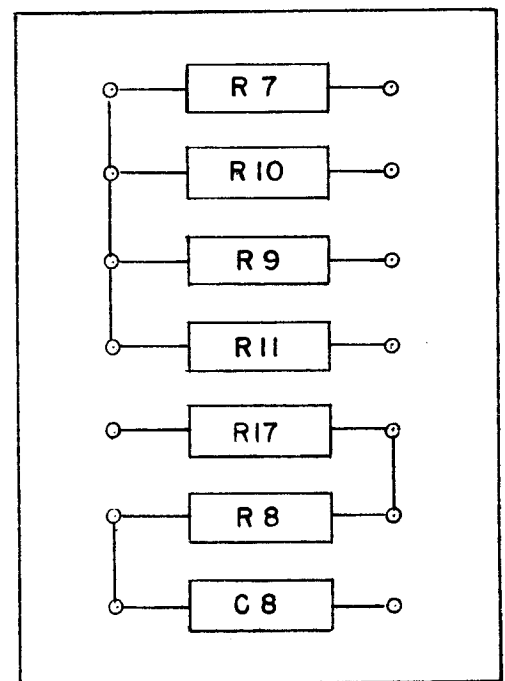
A-654



TB-1



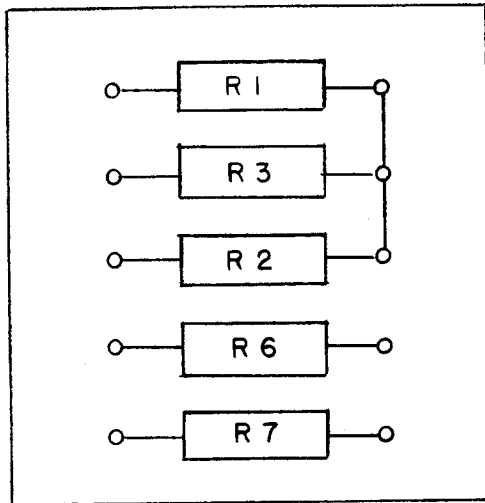
TB-2



TB-3

TERMINAL BOARD TONE TERMINAL TRANSMIT MODEL TKM-TG			
THE TECHNICAL MATERIEL CORPORATION MAMARONECK, NEW YORK			
DATE	2-20-51	CHKD.	<i>GRB</i>
DRAWN		APPD.	<i>hr</i>
SHEET	OF	NO	<i>A-654</i>

A-655



TB-1

**NOT TO BE RELEASED  
W/O AUTHORIZATION**

AUTH. BY.....

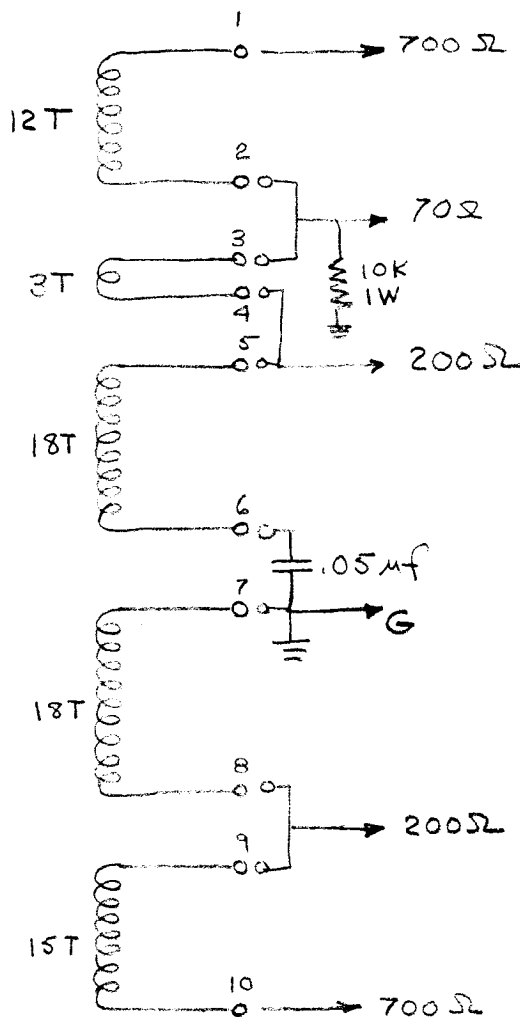
DATE:.....

WAS AEM005 1/27/54

RESISTOR BOARD TONE TERMINAL RECEIVE MODEL TKM-RC		
THE TECHNICAL MATERIEL CORPORATION MAMARONECK, NEW YORK		
DATE	2-20-51	CHKD. <i>APP</i>
DRAWN	<i>JAD</i>	APPD. <i>RW</i>
SHEET	OF	NO A-655

A-660

Wound with # 30 Cotenamel  
ON TYPE H Ferramic Core  
109



**NOT TO BE RELEASED  
W/O AUTHORIZATION**

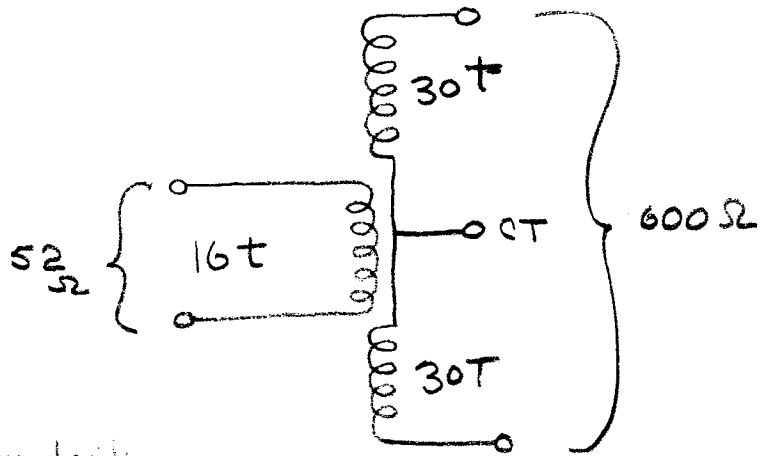
WAS AEW004  
1/29/54

AUTH. BY.....  
DATE:.....

DATE	8/9/51	100-1600 KC Antenna coupler transf. TR-007	THE TECHNICAL MATERIEL CORPORATION MAMARONECK, NEW YORK
DRN.	H. R. B		
CHKD.	<i>[Signature]</i>		SHEET OF NO. A-660
APPD.	<i>[Signature]</i>		

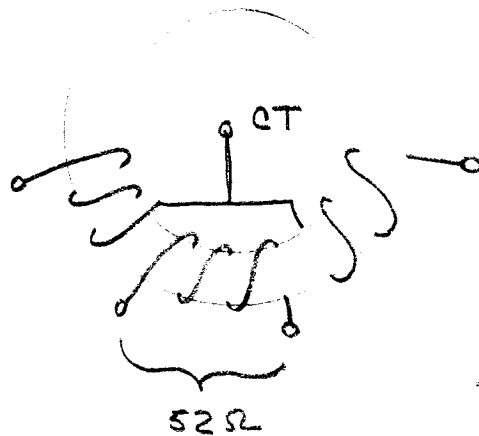


A-661-1

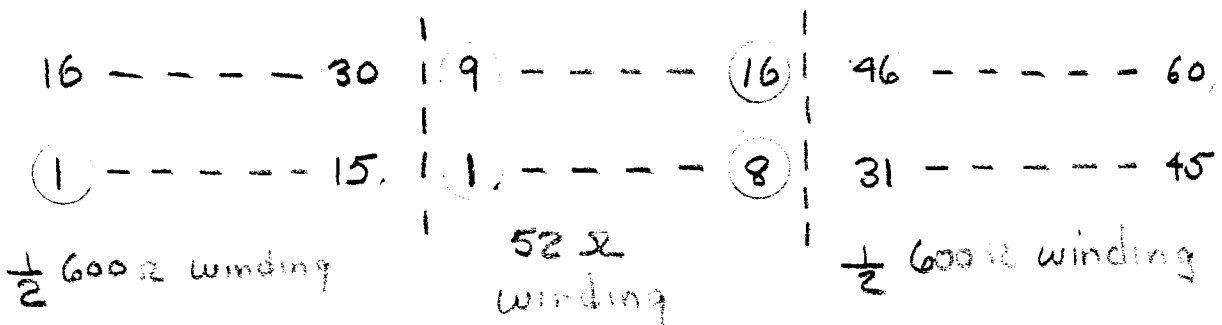


Note: Wound similarly  
To BAR.

H-109 Core  
#30 Cotenametal  
wire



Superseded By  
A-511  
3/15/54

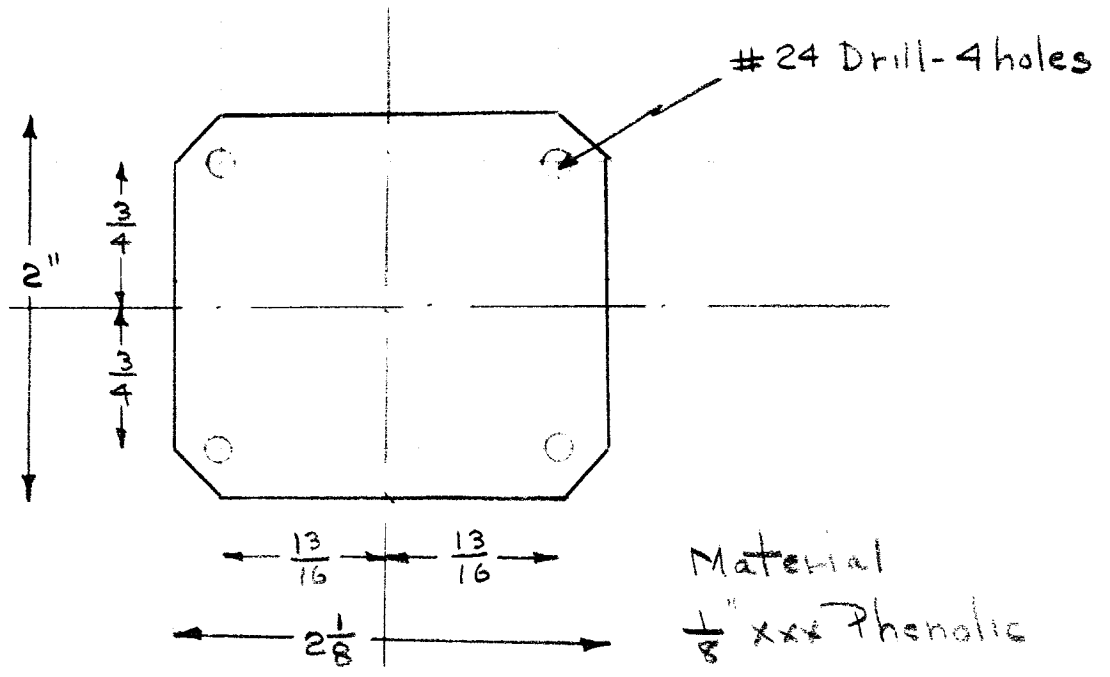


Was AEM087  
1/29/54

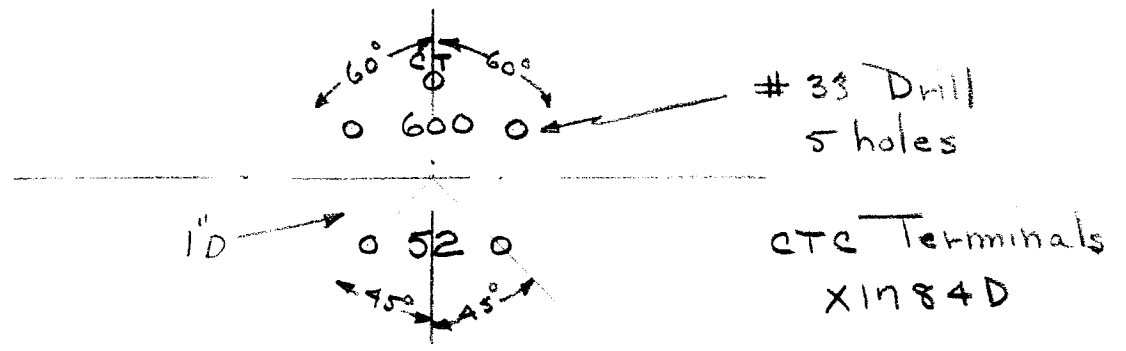
DATE 4/14/52	Antenna Coupler 100-1500 KC. 52-600 ohm TR-011	THE TECHNICAL MATERIEL CORPORATION MAMARONECK, NEW YORK	
DRN. ARB			
CHKD. ARB		SHEET 1 OF 2	NO. A-661
APPD. ARB			

A-661-2

2



Case & Spacers  
same as per R.A.C.



Superseded by  
A-511  
3/15/54

Top terminal board and stamping  
arrangement

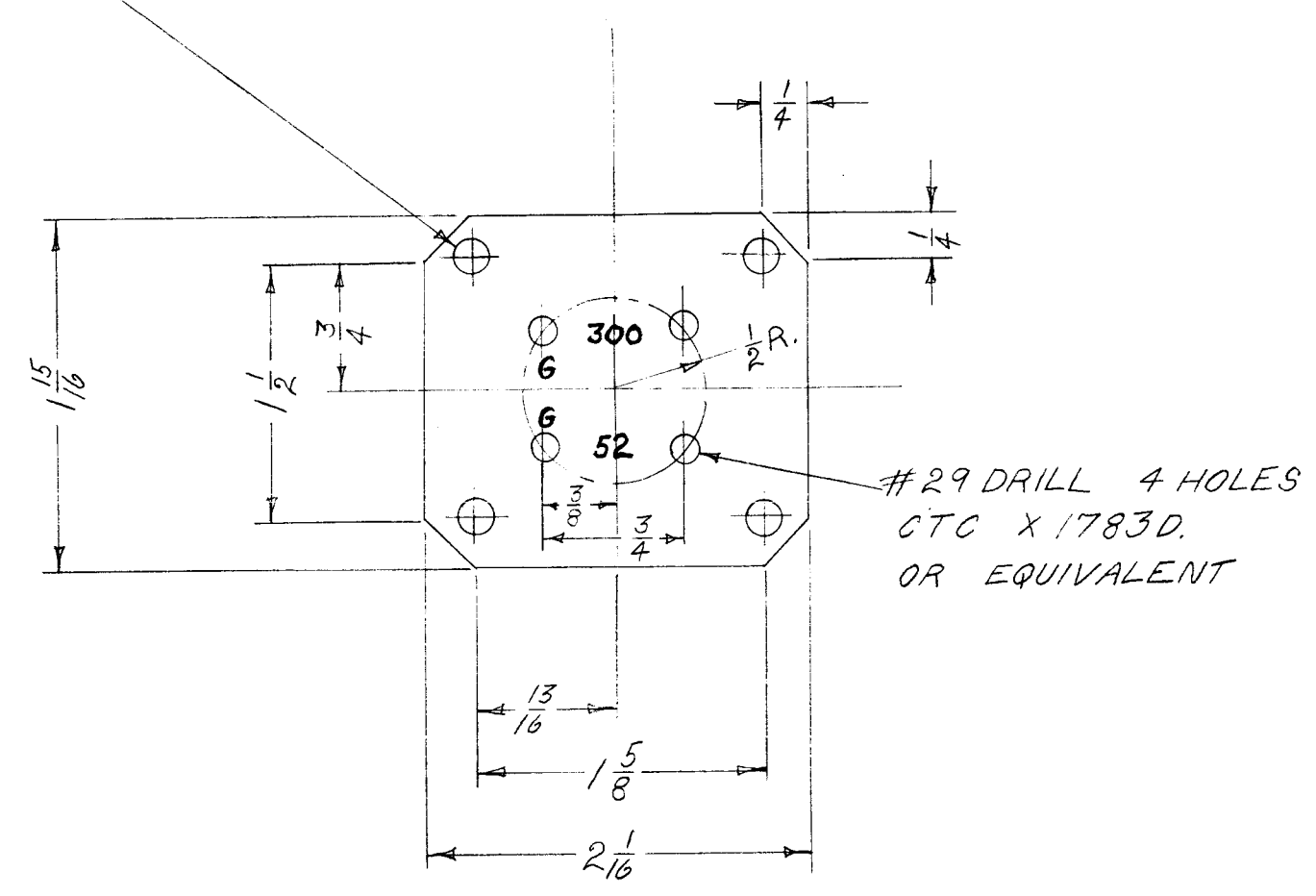
was AEM086  
1/29/54

DATE 4/19/52	Antenna Coupler 100-1500 kc 52-600 R	THE TECHNICAL MATERIEL CORPORATION	
DRN. AEB			
CHKD. AEB		SHEET 2 OF 2	NO. A-661
APPD. ARB		TR-011	

A-662

SYM	DATE	DESCRIPTION	CK	APP
A	2/5/56	WAS TR012	JAL	APP

#28 DRILL 4 HOLES



REF. #AEM104

was AMM035  
1/29/54

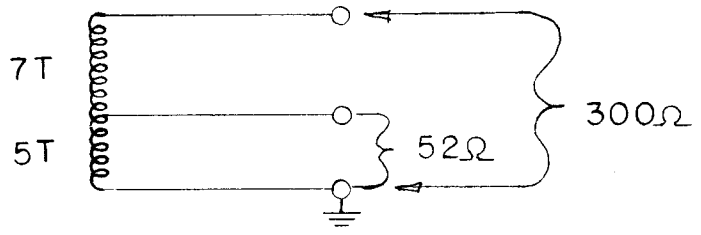
MATERIAL: 1/8 THK NATURAL XXXP LAMINATED PHENOLIC.

JOB 133

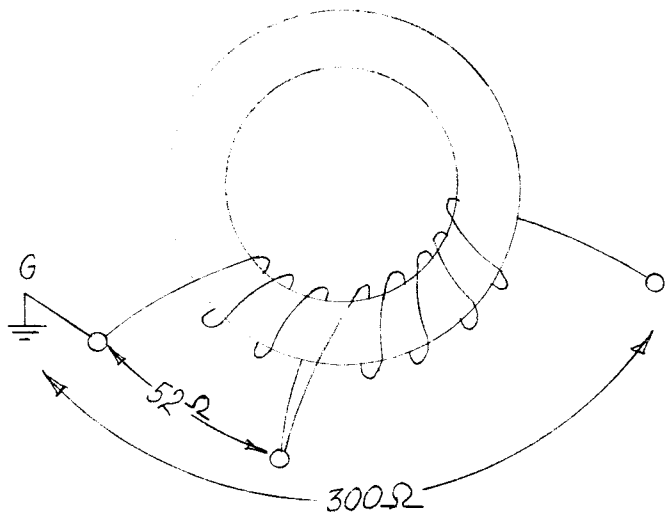
DATE 8-14-52	TERMINAL BOARD TR-140	THE TECHNICAL MATERIEL CORPORATION MAMARONECK, NEW YORK	
DRN. E.M.B. 8/14/52			
CHKD. APP			
APPD. APP			
		SHEET 1 OF 3	NO. A-662A

SYM	DATE	DESCRIPTION	CK	APP
A	8/5/56	WAS TR-012	JAG	ARB

CORE: FERAMIC 109 "H"  
 WIRE: #30 COTENAMEL



300 OHMS UNBALANCED TO 52Ω UNBALANCED



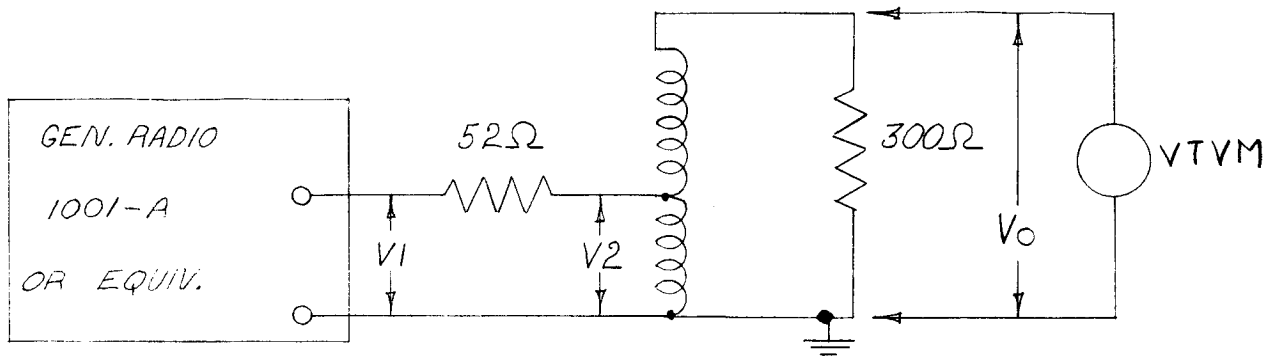
WAS AEM 104  
 1/29/54

REF. DWG #AMM035: USE STANDARD ANTENNA  
 COUPLER CONTAINER POT IN WAX COMPOUND,  
 SUSPEND COIL WITH CORD.

JOB 133

DATE 8.15.52	ANTENNA COUPLER TR-140 2-18 M.C.	THE TECHNICAL MATERIEL CORPORATION MAMARONECK, NEW YORK		
DRN. E.M.B. 8/15/52				
CHKD. ARB				
APPD. ARB				
		SHEET 2 OF 3	NO. A-662	A

SYM	DATE	DESCRIPTION	CK	APP
A	6/5/56	WAS TR012	JRB	AMB



FREQ. MC	V1(VOLTS)	V2(VOLTS)	V0(VOLTS)
2	.8	.39	.79
6	.8	.42	.82
18	.8	.44	.82

V1 & V2 TAKEN WITH H.P. 410B  
V0 TAKEN WITH MEASUREMENTS CORP. MODEL 62

REF. DWG. # AEM104

was AES045  
1/29/54

JOB 133

DATE 8-15-52

DRN. E.M.B. 8/15/52

CHKD. APP

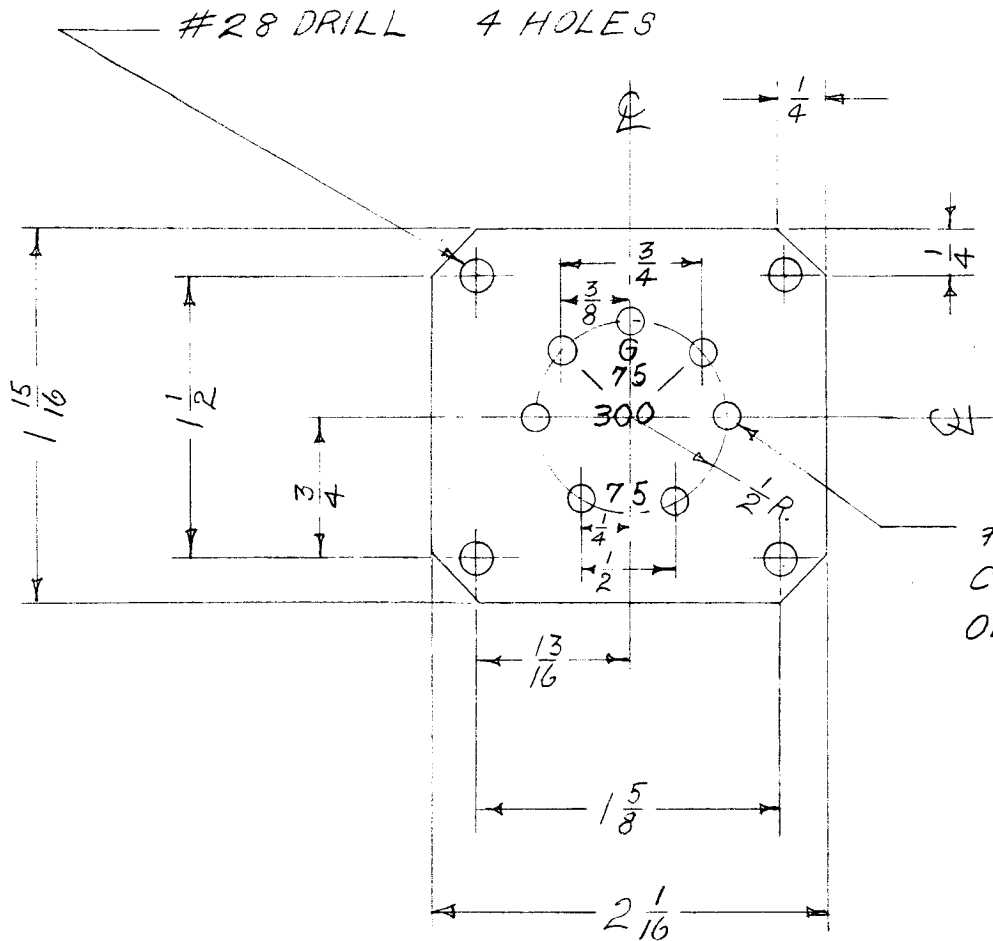
APPD. APP

TEST DATA  
TR-140

THE TECHNICAL MATERIEL  
CORPORATION  
MAMARONECK, NEW YORK

SHEET 3 OF 3 NO. A-662A

A-664



MATERIAL:  $\frac{1}{8}$  THICK NATURAL XXXP LAMINATED PHENOLIC.

**NOT TO BE RELEASED  
W/O AUTHORIZATION**

AUTH. BY.....  
DATE:.....

WAS AMMO 33  
1/29/54

~~TOP SECRET~~

DATE 7-17-52

DRN. E.M.B.

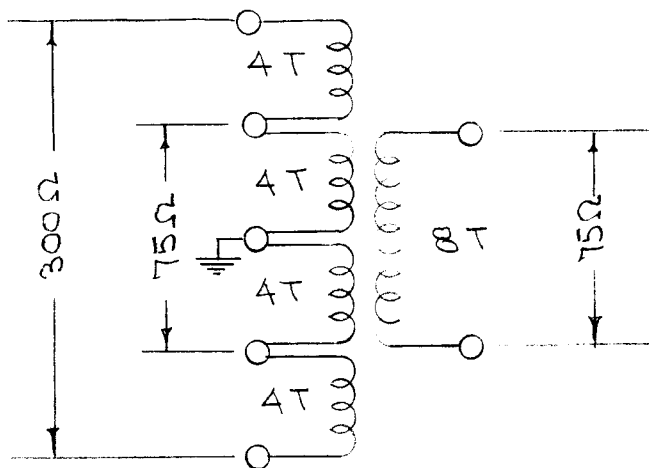
CHKD. *MP*

APPD. *PJB*

TERMINAL BOARD  
TR-017

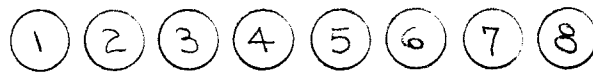
THE TECHNICAL MATERIEL  
CORPORATION  
MAMARONECK, NEW YORK

SHEET 1 OF 2 NO. A-664



CORE - FERAMIC (CI-100-2)  
 WIRE - #30 COTENAMEL  
 (WI-102-9)

75 Ω WINDING  
 SECONDARY



300 Ω WINDING PRIMARY

75 Ω SECONDARY TO BE WOUND OVER PRIMARY  
 SYMETRICAL ABOUT GROUND CENTER TAP.

NOTE: REF. DWG. NO. ANM1033

USE STANDARD ANTENNA COUPLER CONTAINER;  
 POT IN WAX COMPOUND.

**NOT TO BE RELEASED  
 W/O AUTHORIZATION**

AUTH. BY: .....

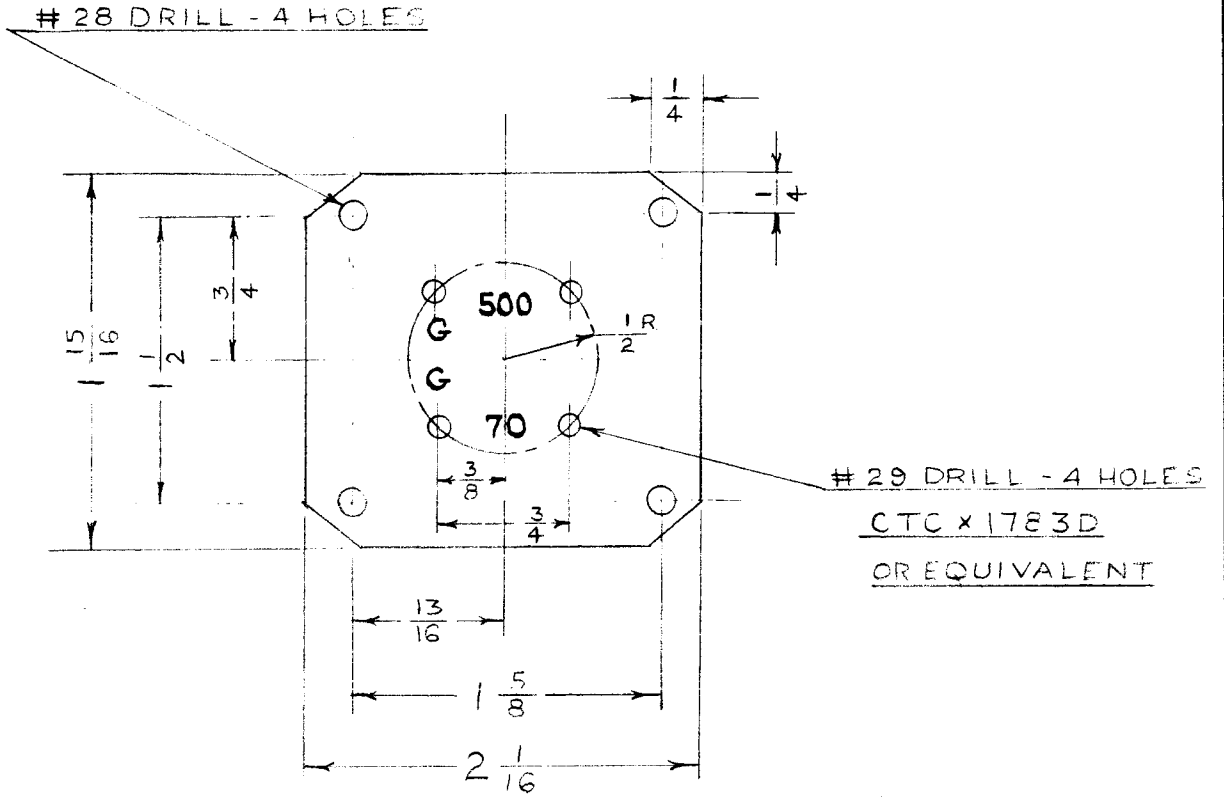
DATE: .....

WAS AEM 103

127	7-17-52
PROJECT No.	DATE

DATE 2-11-54	ANTENNA COUPLER TR-017 2-30 M.I.C.	THE TECHNICAL MATERIEL CORPORATION MAMARONECK, NEW YORK
DRN. REDRAWN CDD		
CHKD. <i>J.H.C.</i>		
APPD.		
		SHEET 2 OF 2 NO. A-66A

A-665-1



**NOT TO BE RELEASED  
W/O AUTHORIZATION**

AUTH. BY.....

DATE:.....

WAS AMM036  
1/29/54

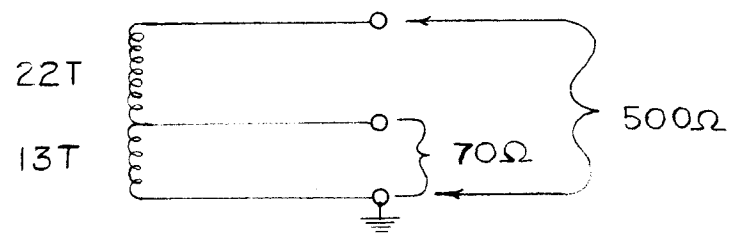
MATERIAL:  $\frac{1}{8}$  THK. XXXP LAMINATED PHENOLIC. JOB 153

DATE 9 - 8 - 52	TERMINAL BOARD TR-018	THE TECHNICAL MATERIEL CORPORATION MAMARONECK, NEW YORK	
DRN. <i>J. Gabel</i>			
CHKD. <i>A.P.P.</i>		SHEET 1 OF 3	NO. A-665
APPD. <i>AH</i>			



A - 665 - 2

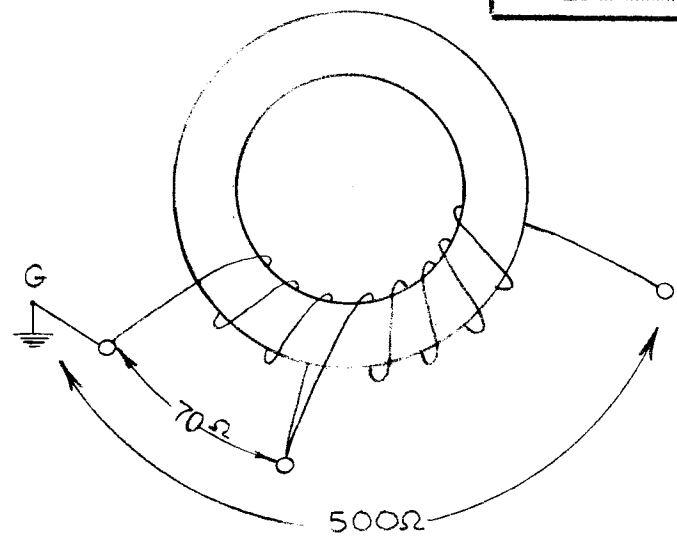
CORE: FERAMIC 109 H  
WIRE: #30 COTENAMEL



70 OHMS UNBALANCED TO 500 OHMS UNBALANCED

**NOT TO BE RELEASED  
W/O AUTHORIZATION**

AUTH. BY.....  
DATE:.....



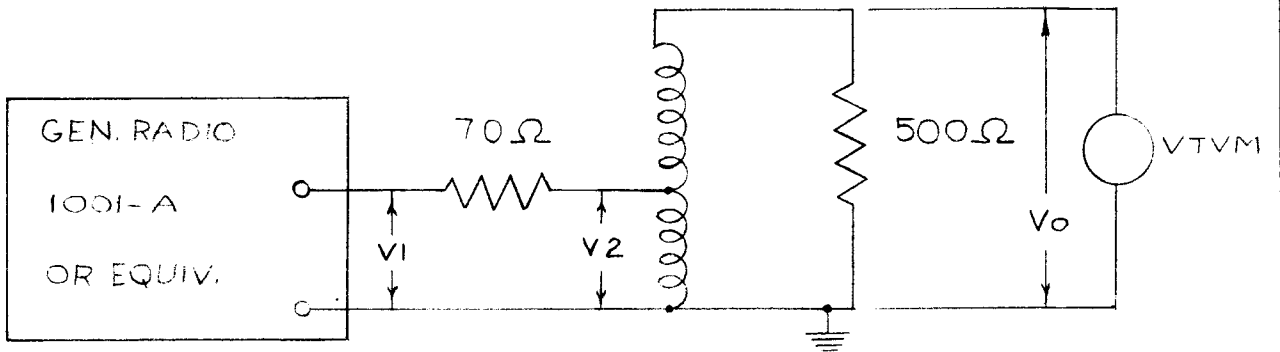
WAS AEM 105  
1/29/54

REF. DWG. # : USE STANDARD ANTENNA  
COUPLER COMPONENT DOT IN WAX COIL -  
POUND, SUSPEND COIL WITH CORD.

JOB 153

DATE 9-8-52	WINDING DATA TR-018	THE TECHNICAL MATERIEL CORPORATION MAMARONECK, NEW YORK	
DRN. <i>L. Gabriel</i>			
CHKD. <i>App</i>			
APPD. <i>App</i>		SHEET 2 OF 3	NO. A-665

A - 665 - 3



FREQ. MC	V1 (VOLTS)	V2 (VOLTS)	V0 (VOLTS)
500	.72	.36	.88
1000	.72	.36	.89
2000	.72	.38	.88

**NOT TO BE RELEASED  
W/O AUTHORIZATION**

AUTH. BY.....

DATE:.....

was AES046  
1/29/54

JOB 153

DATE 9 - 8 - 52

DRN. *L. J. Lab...*

CHKD. *APB*

APPD. *FA*

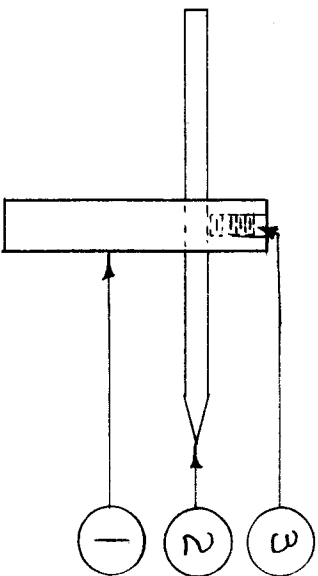
TEST DATA  
TR - 018

**THE TECHNICAL MATERIEL  
CORPORATION**  
MAMARONECK, NEW YORK

SHEET 3 OF 3 | NO. A-665

IF IT IS FOUND DESIRABLE TO CHANGE ANY TOLERANCE OR OTHER DETAIL, SPECIFIED ON THIS DRAWING NOTIFY THE PURCHASER PROMPTLY.

MAXIMUM ALLOWABLE TOLERANCES HAVE BEEN DETERMINED AND DEVIATIONS WILL BE CAUSE FOR REJECTION. REMOVE ALL BURRS AND SHARP EDGES



REQ. PER UNIT	USED ON			
	MODEL	PROJECT NO.	ASSY. NO.	DATE
2	TAC-1	132	A-718	1-12-54

A-688

1	3	ANS65D-6H3	SCREW, HEADLESS SET	
1	2	PM-103	SPARK ROD	
1	1	PM-273	POST	
REQ. ITEM	PART NO.		DESCRIPTION	SYMBOL

THE TECHNICAL MATERIEL CORP.  
MAMARONECK, NEW YORK

SPARK ROD ASSY.

TAC-1

STOCK SIZE	#
MATERIAL	#
WEIGHT PER PC.	#
TYPE & TEMPER	#
HEAT TREAT. SPEC.	#
FINISH & SPEC. NO.	#

C.O.D.	AMJ	WOK
DRAWN	AMJ	WOK
CHECKED	AMJ	WOK
ELEC. DES. APP.	AMJ	WOK
MECH. DES. APP.	AMJ	WOK
FINAL APPROVAL	AMJ	WOK

ISSUE ITEM	CHANGED FROM	DATE	CN. NO.	DRAFTS	CHECKER	ENG. APP.
TOLERANCES						
SCALE						

ALL DEC. DIM. ±  
FRAC. DIM. ±  
OTHERS ANGULAR DIM. ±

DRILL, PUNCH, COMMERCIAL STOCK SIZES AND MANUFACTURERS TOLERANCES ARE NOT INCLUDED.

A-688