

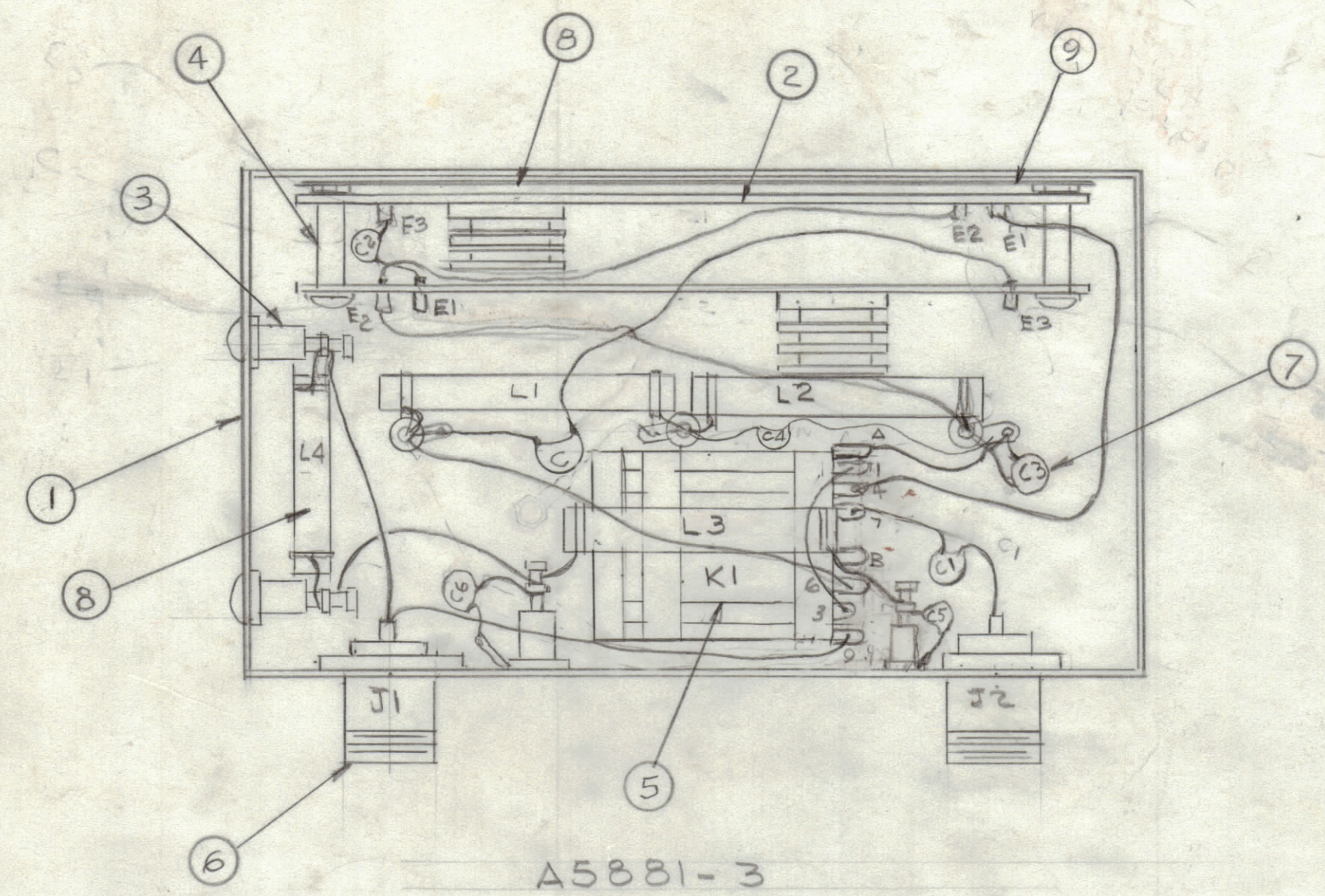
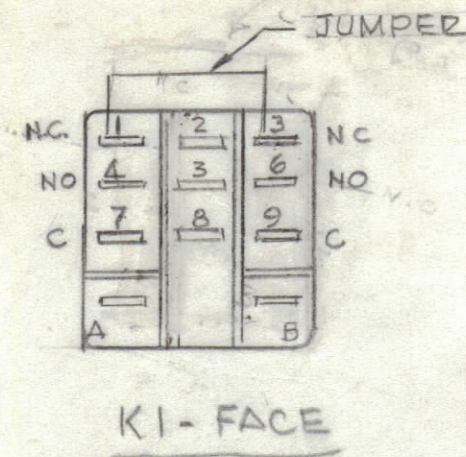
4

3

2

1

REVISIONS						
ZONE	LTR	DESCRIPTION	DATE	E.M.N.NO	DRAFT	CHKD APPD
		ORIGINAL RELEASE FOR PRODUCTION	4-93			
	A					
	B	ITEM 1 WAS MS5260	4-15-83		GDL	



VLF/LF DOUBLE AMP -  
A5881-3 (AX5281)-3

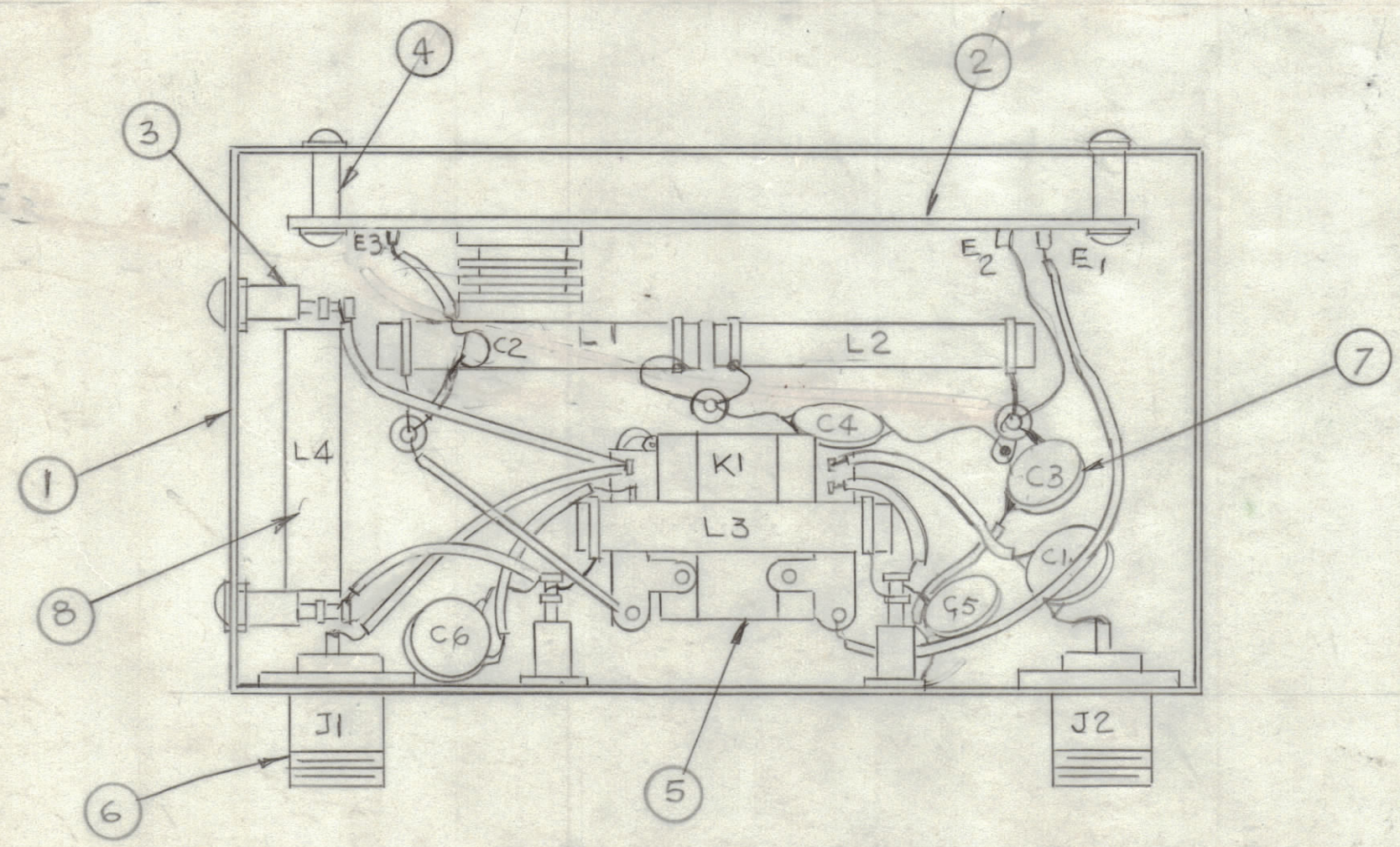
QTY.	ITEM	PART NO.	DESCRIPTION	SYMBOL
1	9	IM 143	FISHER PAPER	
4	8	CL178	COIL RF FXD	
6	7	CC131-41	CAPACITOR FIXED	
2	6	UG 58	RECEPTACLE BNC	
1	5	RL197	RELAY DC	
4	4	TE 117-35	SPACER	
3	3	TE102-2	TERMINAL TURRET	
2	2	A10812-6	PC BOARD ASSY	
1	1	MS7260	MACHINING BX238	

LF - A5881-1 (AX5272)

QTY.	ITEM	PART NO.	DESCRIPTION	SYMBOL
4	8	CL 502	COIL RF FIXED	L4, L2
6	7	CC131-41	CAPACITOR FIXED	
2	6	UG 58	RECEPTACLE BNC	
1	5	RL197	RELAY DC	
4	4	TE 135-2	SPACER	
7	3	TE102-2	TERMINAL TURRET	
1	2	A10812-6	PC BOARD ASSY	
1	1	MS7260	MACHINING BX238	

HF - A5881-2 (AX5273)

QTY.	ITEM	PART NO.	DESCRIPTION	SYMBOL
4	8	CL178	COIL RF FIXED	
6	7	CC100-32	CAPACITOR FIXED	
2	6	UG58	RECEPTACLE	
1	5	RL197	RELAY D.C.	
4	4	TE135-2	SPACER	
7	3	TE102-2	TERMINAL TURRET	
1	2	A10812-6	P.C. BOARD ASSY	
1	1	MS7260	MACHINING BX238	



VLF/LF	VAA-3	HIG. GAIN	AX 5281
VLF/LF	VAA-2		AX5272
HF	VAA-1		AX5273
QTY / UNIT	MODEL USED ON	ASS'Y NO.	
APPLICATION			
CODE			

**NOTICE TO PERSONS RECEIVING THIS DRAWING**  
 THE TECHNICAL MATERIEL CORPORATION claims proprietary right in the material disclosed hereon. This drawing is issued in confidence for engineering information only and may not be reproduced or used to manufacture anything shown hereon without permission from THE TECHNICAL MATERIEL CORPORATION to the user. This drawing is loaned for mutual assistance and is subject to recall at any time.

UNLESS OTHERWISE SPECIFIED DIMENSIONS ARE IN INCHES AND INCLUDE CHEMICALLY APPLIED OR PLATED FINISHES

**TOLERANCES ON**

DECIMALS	FRACTIONS
.X ± .05	± 1/64
.XX ± .01	ANGLES
.XXX ± .005	± 0° -30'

FINAL APPROVAL	DATE
<i>[Signature]</i>	4/7/93
MECH. DES.	DATE
ELECT. DES.	DATE
CHECKED	DATE
DRAWN	DATE
G. DELUCIA	1-6-93

LIST OF MATERIAL			
<b>THE TECHNICAL MATERIEL CORP.</b> MAMARONECK, NEW YORK			
ASSY HF/LE & VLF ANT AMPL			
SIZE	CODE IDENT. NO.	DWG NO.	ISSUE
C	82679	A5881-	B
SCALE	SHEET		OF

4

3

2

1