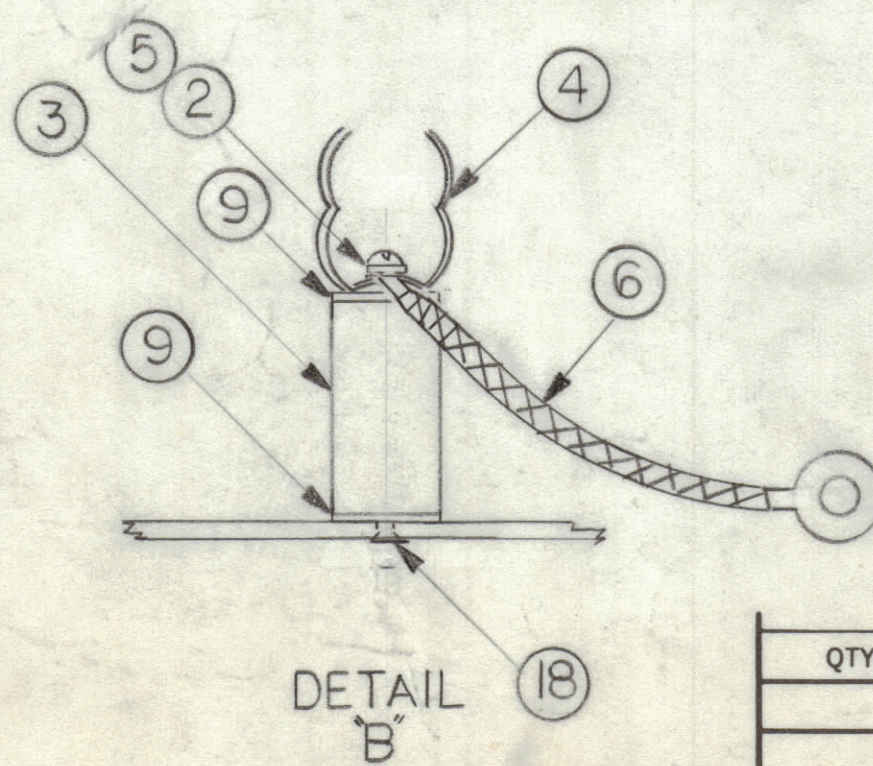
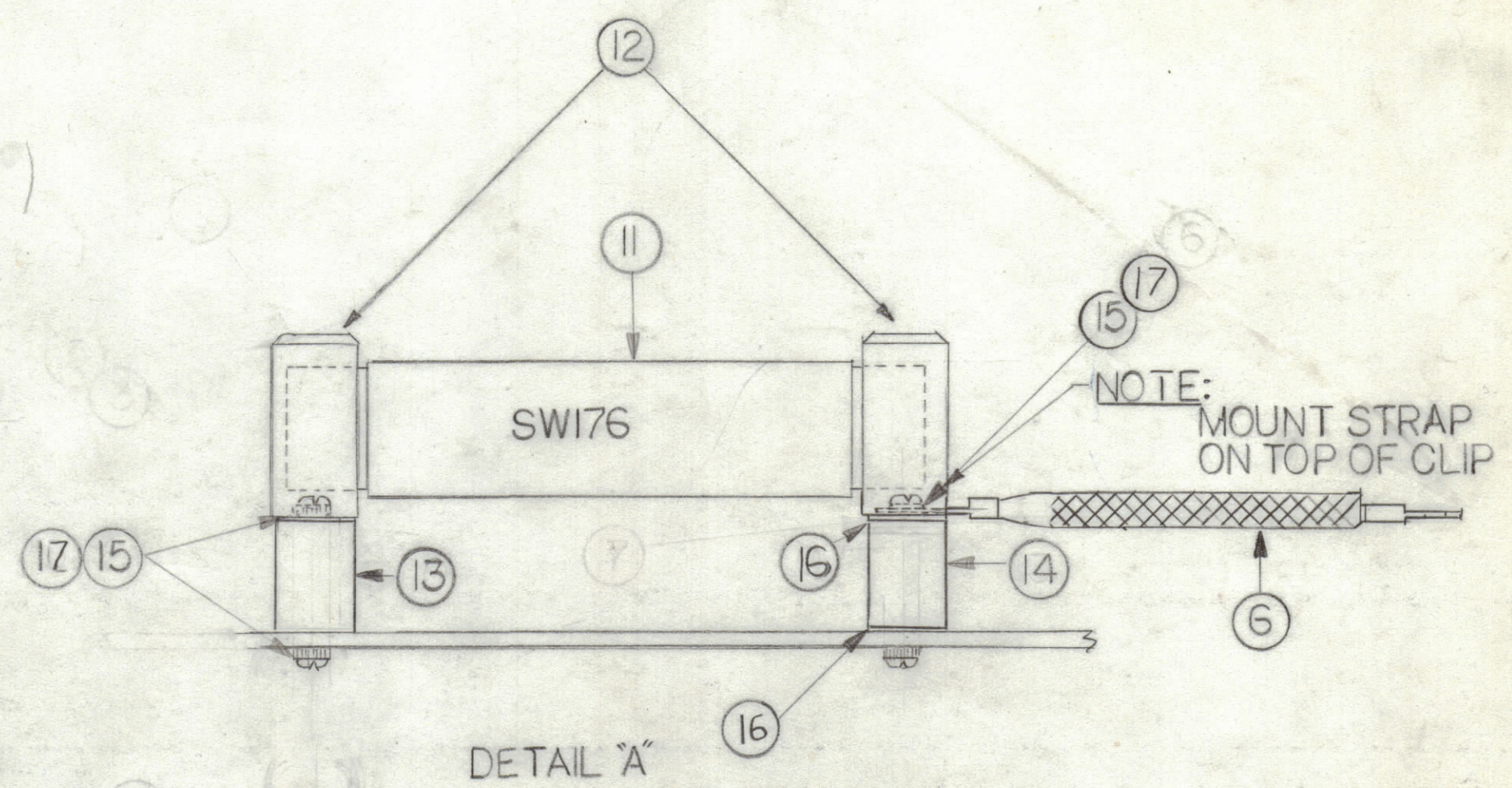
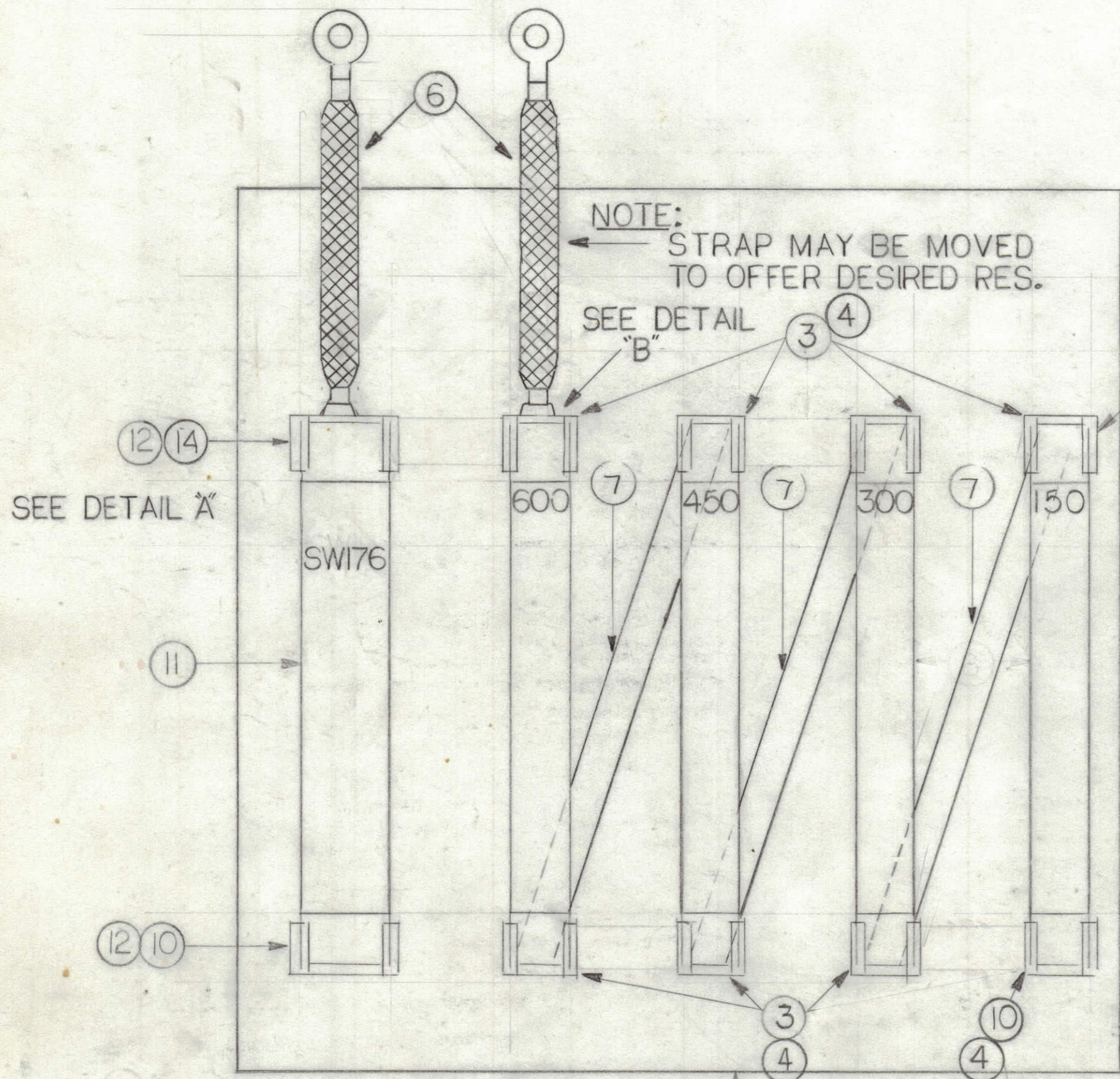


REVISIONS						
ZONE	LTR	DESCRIPTION	DATE	E.M.N.O	DRAFT	CHKD APPD



QTY. REQ.	ITEM	PART NO.	DESCRIPTION	SYMBOL
4	18	SCFP0832BN6	SCREW MACHINE	
4	17	SCBPI032BN6	SCREW, MACHINE	
2	16	WA109 56	WASHER, FIBER	
4	15	LWEI032MRN	LOCKWASHER EXTERNAL	
1	14	NS3W0306	INSULATOR, STAND OFF	
1	13	TEI032BN62R	SPACER, THREADED 3/4 DIA X 3/4 LONG	
2	12	FC102-5XXN	CLIP, FUSE	
1	11	SWI76	LIGHTNING ARRESTOR	
1	10	TE0832AE51R	SPACER THREADED 1/2 DIA X 1 1/16 LG.	
14	9	WA-109-46	WASHER, FIBER	
4	8	R115-150	RESISTOR, FIXED	
3	7	MS144-2	LINK	
2	6	CA409-45-3.5	LEAD ASSY	
12	5	SCBP0832BN6	SCREW, MACHINE	
8	4	FC102-3XXN	CLIP, FUSE	
7	3	NS3W0206	INSULATOR, STANDOFF	
16	2	LWE08MRN	LOCKWASHER, EXTERNAL	
1	1	MS715	MOUNTING PLATE	

LIST OF MATERIAL				
FINAL APPROVAL	DATE	THE TECHNICAL MATERIEL CORP. MAMARONECK, NEW YORK SUBASSY, RTB-20		
MECH. DES.	DATE			
ELECT. DES.	DATE			
CHECKED	DATE			
DRAWN	DATE	SIZE	CODE IDENT. NO.	DWG NO.
		C	82679	A5860
MATERIAL		SCALE	SHEET OF	
FINISH				

RTB-20		
QTY / UNIT	MODEL USED ON	ASS'Y NO.
APPLICATION		
CODE		
<small>NOTICE TO PERSONS RECEIVING THIS DRAWING</small> <small>THE TECHNICAL MATERIEL CORPORATION claims proprietary right in the material disclosed hereon. This drawing is issued in confidence for engineering information only and may not be reproduced or used to manufacture anything shown hereon without permission from THE TECHNICAL MATERIEL CORPORATION to the user. This drawing is loaned for mutual assistance and is subject to recall at any time.</small>		