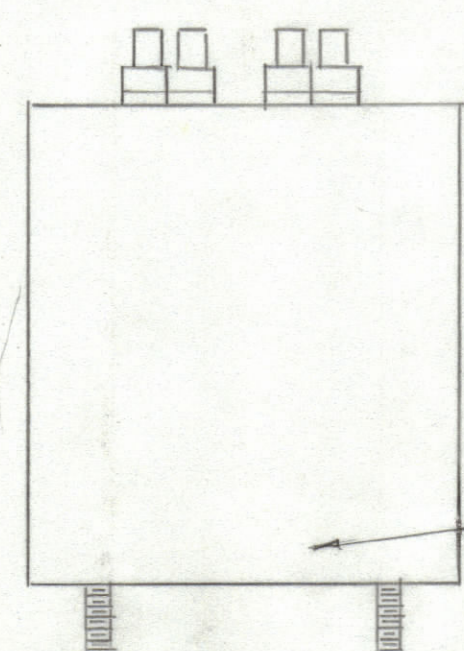
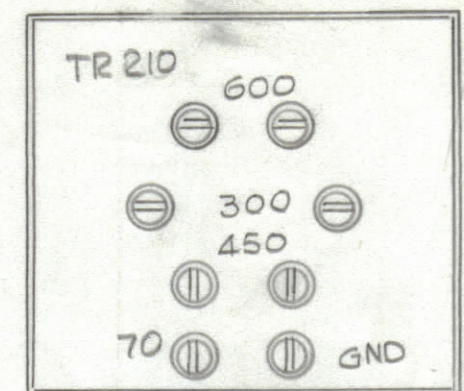
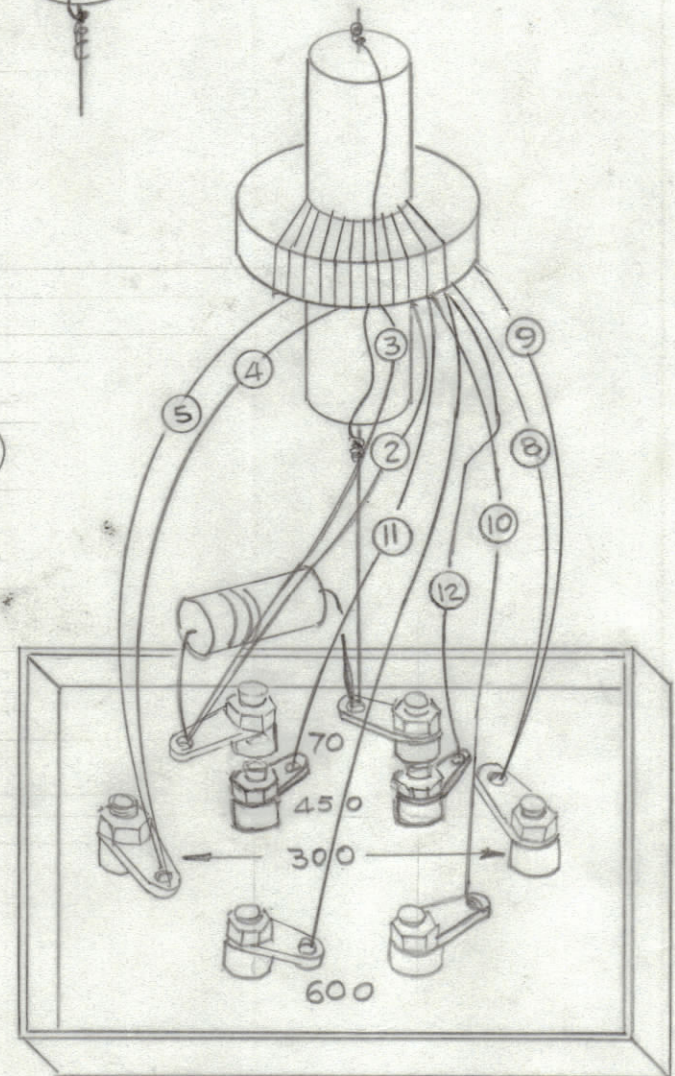
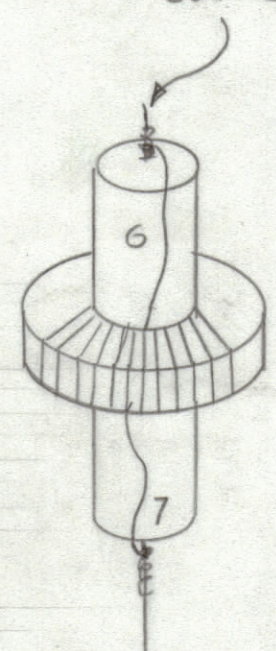
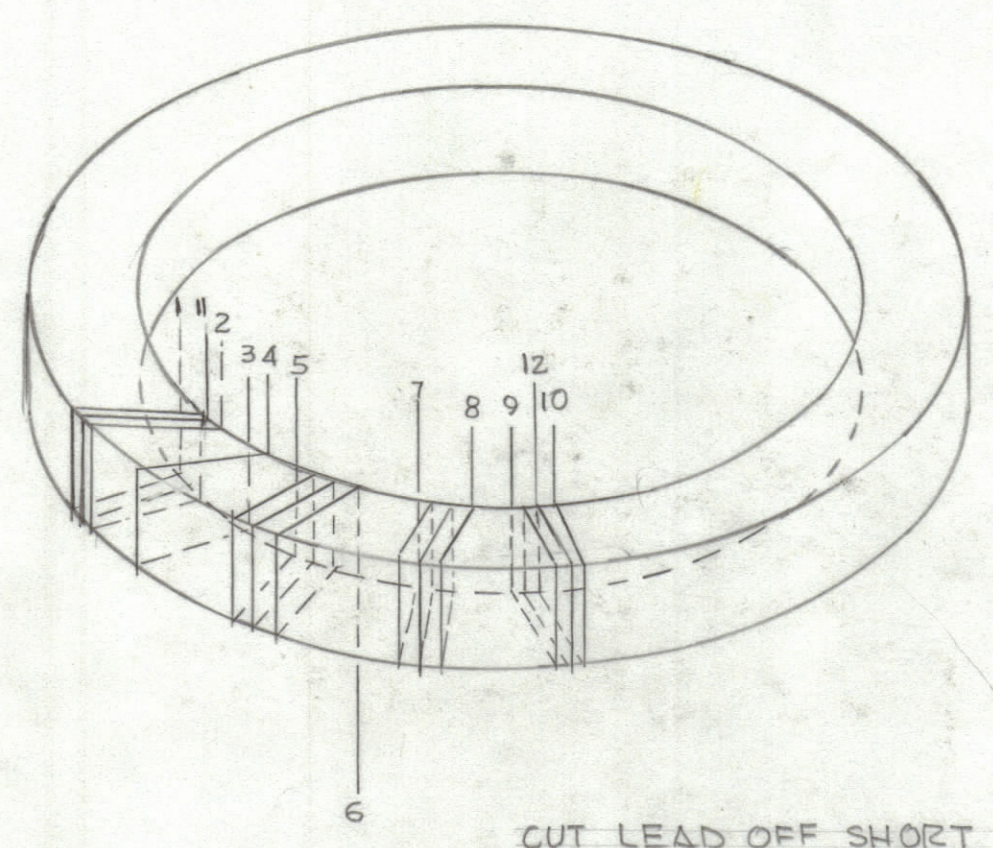
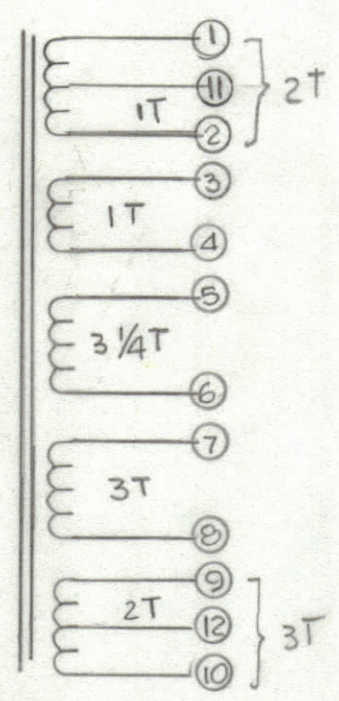


M 1182



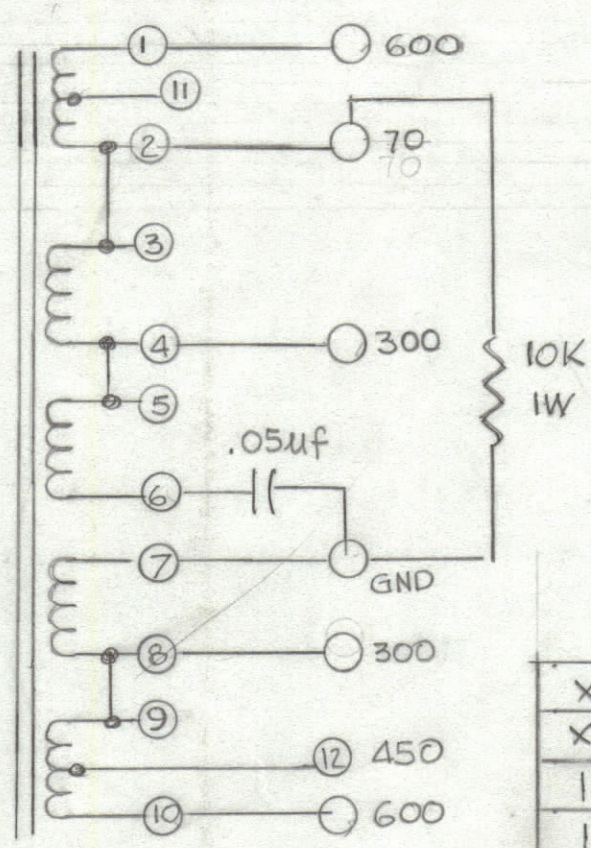
REVISIONS						
ZONE	LTR	DESCRIPTION	DATE	E.M.N.NO	DRAFT	CHKD APPD
	0	ORIG. REL. FOR PROD.	9/18/84			JLB

NOTE - COVER STAMPING
AFTER PRINTING, STAMP AS SHOWN
1/8 HIGH BLACK GOTHIC

INSPECTED STAMP

- 1- WIND AS ABOVE (CLOSE WIND TURNS)
- 2- SLIP TOROID OVER ITEM 3. STRIP, TIN AND SOLDER CONNECT LEADS 6 & 7 AS SHOWN.
- ALL LEADS TO BE APPROX. 2" LONG.
- 3- STRIP & TIN LEADS, MAKE SOLDER CONNECTIONS AS SHOWN. KEEP COIL AT LEAST 1/2" ABOVE COVER, USING CAPACITOR LEAD AS SUPPORT.
- NOTE RESISTOR ACROSS 70-2 TERMINALS

- 4 - TEST AS PER SPEC. S-133
- 5- SOLDER TERMINAL END IN PLACE.
- 6- FILL CAN TO WITHIN 1/4" OF TOP (ITEM 6)
- 7- SOLDER STUD END IN PLACE.
- 8- ALLOW TO COOL FOR TWO HOURS.
- 9- TEST AS PER SPEC. S-133
- 10- SMOOTH SEAMS, APPLY S144 & S 115 TO ALL SURFACES EXCEPT TERMINALS AND STUD END
- 11- STAMP 1/8 HIGH BLACK GOTHIC AS SHOWN ON TOP COVER.
- 12- STAMP TMC IN SIGNA. ON SIDE



QTY. REQ.	ITEM	PART NO.	DESCRIPTION	SYMBOL
X	7	BS 100	SOLDER, SOFT	
X	6	CL 106	COMPOUND, POTTING	
1	5	2032GF 103K	RESISTOR, FIXED	
1	4	BX 107	CAN	
1	3	CN 100-3	CAPACITOR, FIXED	
X	2	WI 102-9-9	WIRE, MAGNET	
1	1	CI-104	CORE, RING TYPE	

LIST OF MATERIAL

UNLESS OTHERWISE SPECIFIED DIMENSIONS ARE IN INCHES AND INCLUDE CHEMICALLY APPLIED OR PLATED FINISHES	FINAL APPROVAL GDL	DATE 9/18/84
TOLERANCES ON	MECH. DES.	DATE
DECIMALS	ELECT. DES.	DATE
.X ± .05	CHECKED	DATE
.XX ± .01	DRAWN	DATE
.XXX ± .005	GDL	9-18-84

THE TECHNICAL MATERIEL CORP. MAMARONECK, NEW YORK			
TRANSFORMER TR210 ASSY			
SIZE	CODE IDENT.NO.	DWG NO.	ISSUE
C	82679	A-5835	0
SCALE	SHEET		OF

QTY / UNIT	MODEL USED ON	ASS'Y NO.
APPLICATION		
CODE		
<small>NOTICE TO PERSONS RECEIVING THIS DRAWING</small> <small>THE TECHNICAL MATERIEL CORPORATION claims proprietary right in the material disclosed hereon. This drawing is issued in confidence for engineering information only and may not be reproduced or used to manufacture anything shown hereon without permission from THE TECHNICAL MATERIEL CORPORATION to the user. This drawing is loaned for mutual assistance and is subject to recall at any time.</small>		