

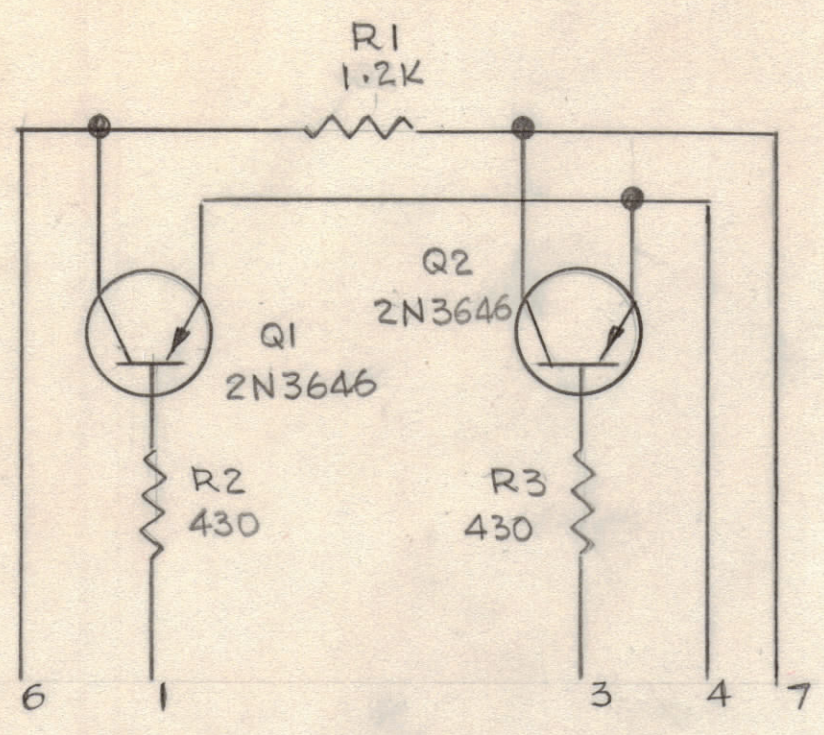
4

3

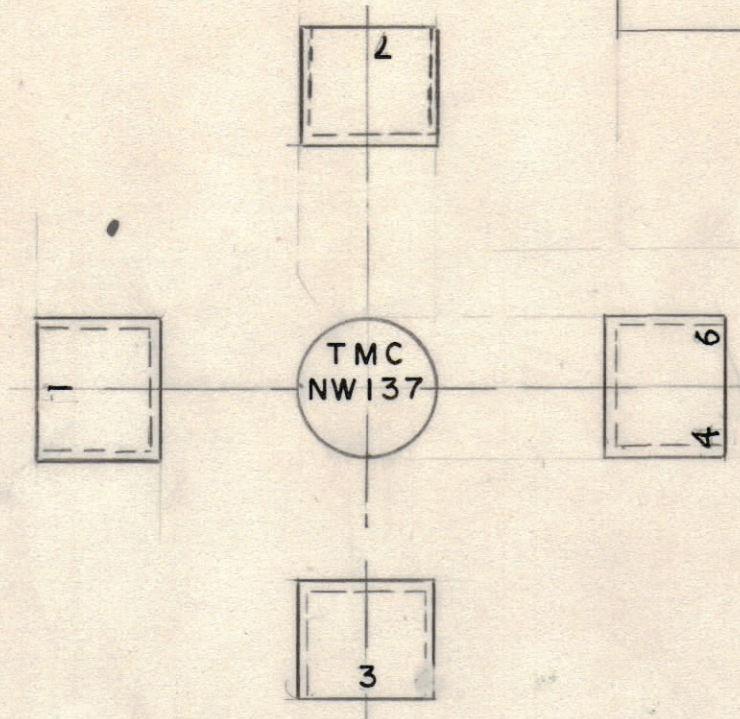
2

1

REVISIONS						
ZONE	LTR	DESCRIPTION	DATE	E.M.N.NO	DRAFT	CHKD APPD
	Ø	ORIGINAL RELEASE for Production	5/18/82	1197	Ø	



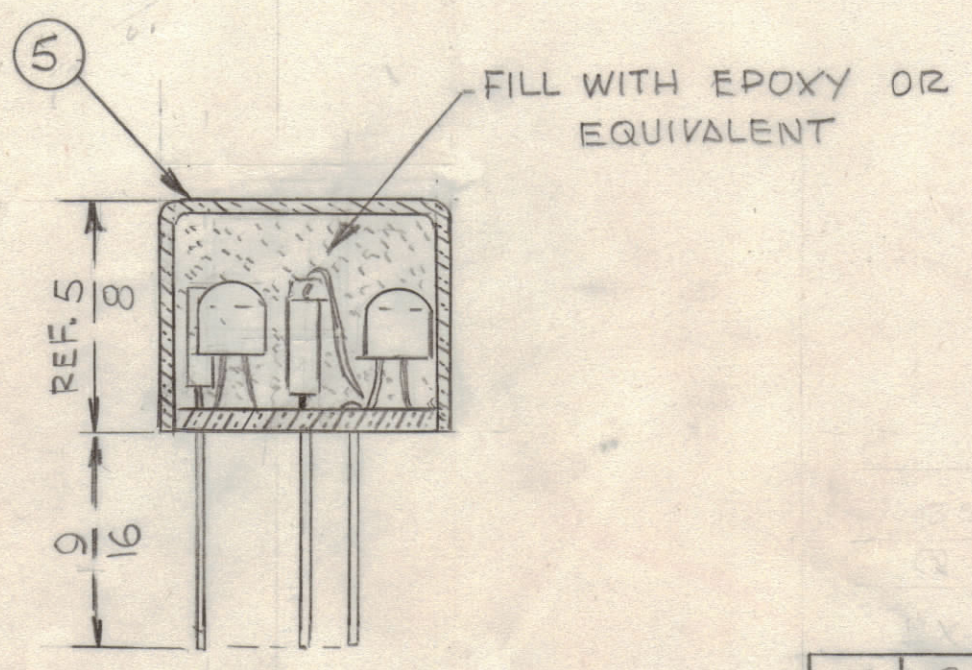
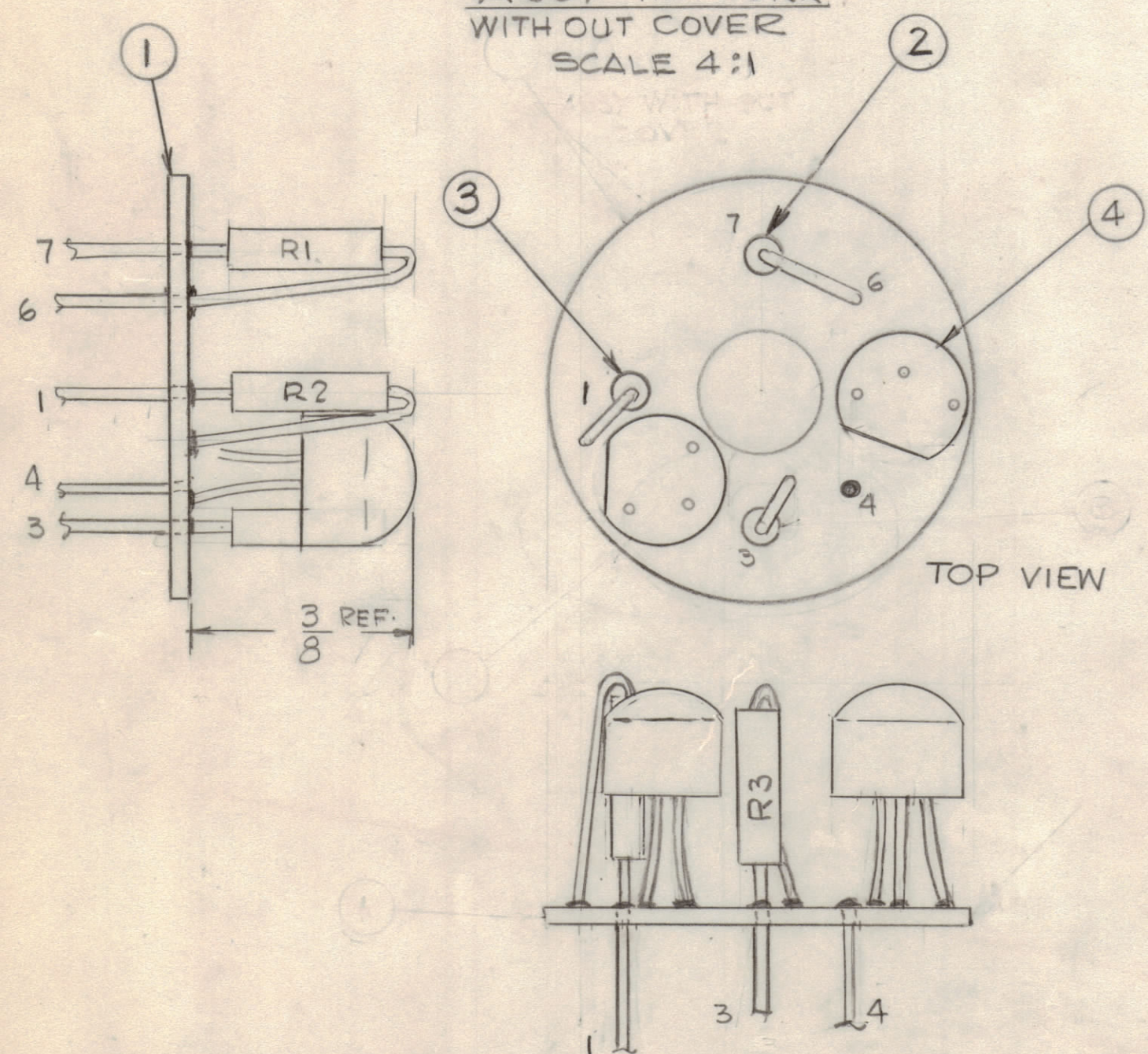
SCHEMATIC



MARKING PROCESS: AS PER TMC SPECIFICATION S727
 LETTERING: 1/8 HIGH WHITE GOTHIC, LOCATED AS SHOWN

BX 204
 SCALE 1:1

ASSY NETWORK
 WITH OUT COVER
 SCALE 4:1



ASSEMBLY SECTION
 SCALE: 2:1

QTY. REQ.	ITEM	PART NO.	DESCRIPTION	SYMBOL
X	6	BS100	SOLDER, TIN ALLOY	
1	5	BX 204-1	CASE, CYLINDRICAL	
2	4	2N3646	TRANSISTOR	Q1, Q2
2	3	RC07GF431J	RES. FXD, COMP.	R2, R3
1	2	RC07GF122J	RES. FXD, COMP.	R1
1	1	PC829	PRINTED CIRCUIT BD	

THE TECHNICAL MATERIEL CORP.
 MAMARONECK, NEW YORK

ASSY NETWORK NW137

QTY / UNIT	MODEL USED ON	ASS'Y NO.
	MMX-2C	
APPLICATION		
CODE		

NOTICE TO PERSONS RECEIVING THIS DRAWING
 THE TECHNICAL MATERIEL CORPORATION claims proprietary right in the material disclosed hereon. This drawing is issued in confidence for engineering information only and may not be reproduced or used to manufacture anything shown hereon without permission from THE TECHNICAL MATERIEL CORPORATION to the user. This drawing is loaned for mutual assistance and is subject to recall at any time.

UNLESS OTHERWISE SPECIFIED DIMENSIONS ARE IN INCHES AND INCLUDE CHEMICALLY APPLIED OR PLATED FINISHES	FINAL APPROVAL	DATE
TOLERANCES ON	MECH. DES.	DATE
DECIMALS	ELECT. DES.	DATE
.X ± .05	CHECKED	DATE
.XX ± .01	DRAWN	DATE
.XXX ± .005		
FRACTIONS ± 1/64		
ANGLES ± 0° -30'		
MATERIAL		
FINISH		

SIZE	CODE IDENT.NO	DWG NO.	ISSUE
C	82679	A 5797	Ø
SCALE		SHEET	OF

4

3

2

1