

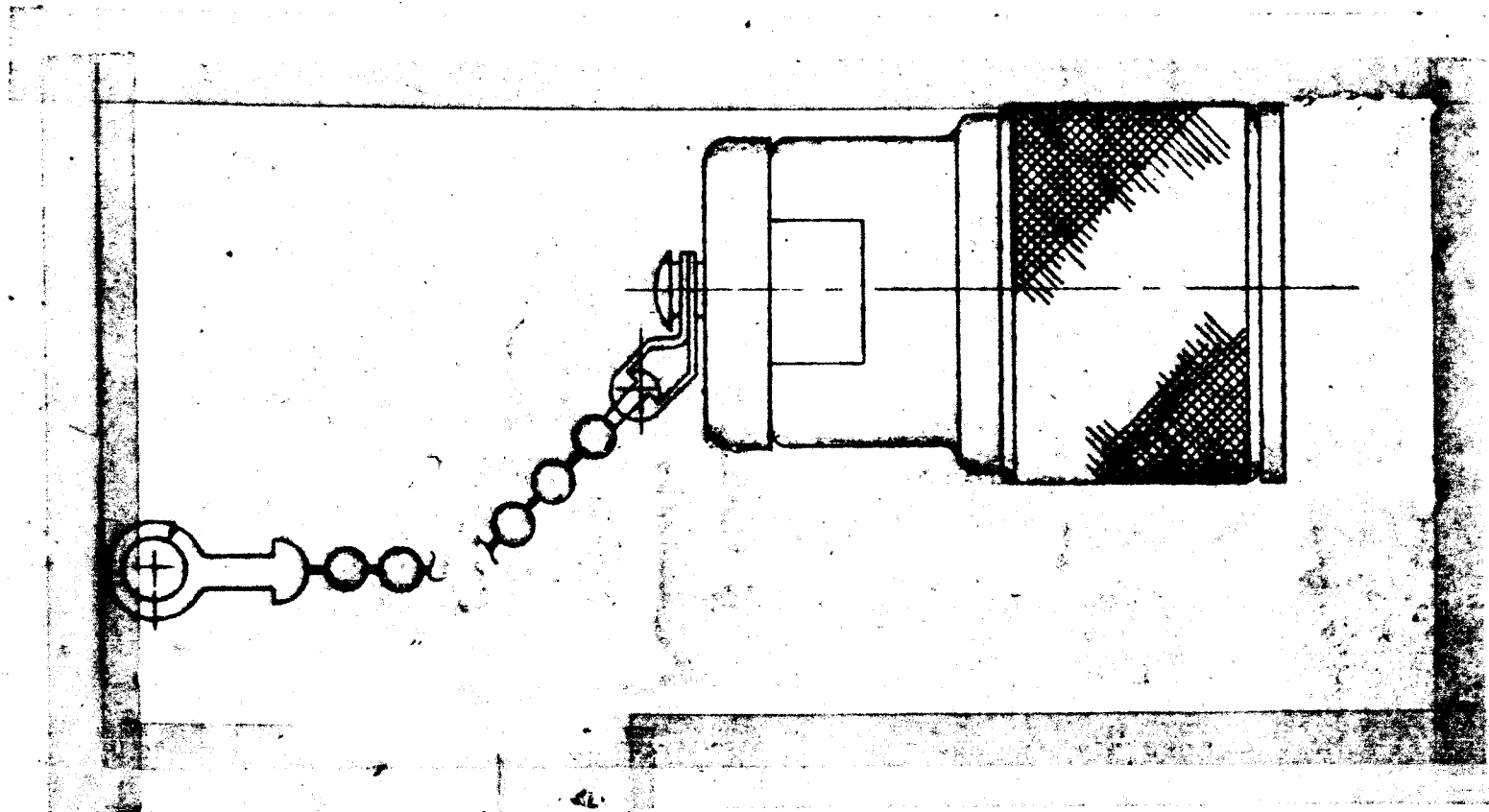
TMC PART NO	ITEM 1	ITEM 2	USED ON
A 5789-1	PL 224	RN 70 D 75 ROF	DL 10A-1
A 5789-2	PL 224	RN 70 D 51 RIF	DL 10A-2

REVISIONS						
ZONE	LTR	DESCRIPTION	DATE	E. M. N. NO.	DRAFT	CHKD APPD
		ORIG RELEASE FOR PROD				

NOT TO BE RELEASED
 W/O AUTHORIZATION
 AUTH BY: _____
 DATE: _____

NOTES:

1. DETERMINE EXACT LENGTH OF RESISTOR LEAD TO MOUNT RESISTOR BETWEEN CENTER CONDUCTOR AND CAP WITHOUT DISTORTION.
2. SOLDER LEAD TO PIN.
3. ASSEMBLE CAP AND CONNECTOR BODY AND TIGHTEN.
4. TRIM AND SOLDER LEAD TO CAP.
5. TEST FOR IMPEDANCE + OR - AS REQUIRED BY DL - 10A.



REQ'D	ITEM	PART NUMBER	DESCRIPTION	SYM.
1	2	SEE CHART	RESISTOR	
1	1	SEE CHART	CONNECTOR, PLUG	

LIST OF MATERIAL

1	DL 10A	
QTY / UNIT	MODEL USED ON	ASS'Y NO.
APPLICATION		
	CODE	

NOTICE TO PERSONS RECEIVING THIS DRAWING
 THE TECHNICAL MATERIEL CORPORATION claims proprietary right in the material disclosed hereon. This drawing is issued in confidence for engineering information only and may not be reproduced or used to manufacture anything shown hereon without permission from THE TECHNICAL MATERIEL CORPORATION to the user. This drawing is loaned for mutual assistance and is subject to recall at any time.

UNLESS OTHERWISE SPECIFIED DIMENSIONS ARE IN INCHES AND INCLUDE CHEMICALLY APPLIED OR PLATED FINISHES		FINAL APP	DATE
DECIMALS	FRACTIONS	MECH. DES.	DATE
X ± .05	1/64	ELECT. DES. <i>SJM</i>	DATE 3/14/51
.XX ± .01	TOLS. ANGLES	CHECKED	DATE
.XXX ± .005	DP 30'	DRAWN	DATE
MATERIAL			
FINISH			

THE TECHNICAL MATERIEL CORP. MAMARONECK, NEW YORK			
ASSY. DUMMY LOAD QDM. SERIES DL-10A			
SIZE	CODE IDENT. NO.	DWG NO.	ISSUE
B	82679	A 5789	0
SCALE		SHEET	OF