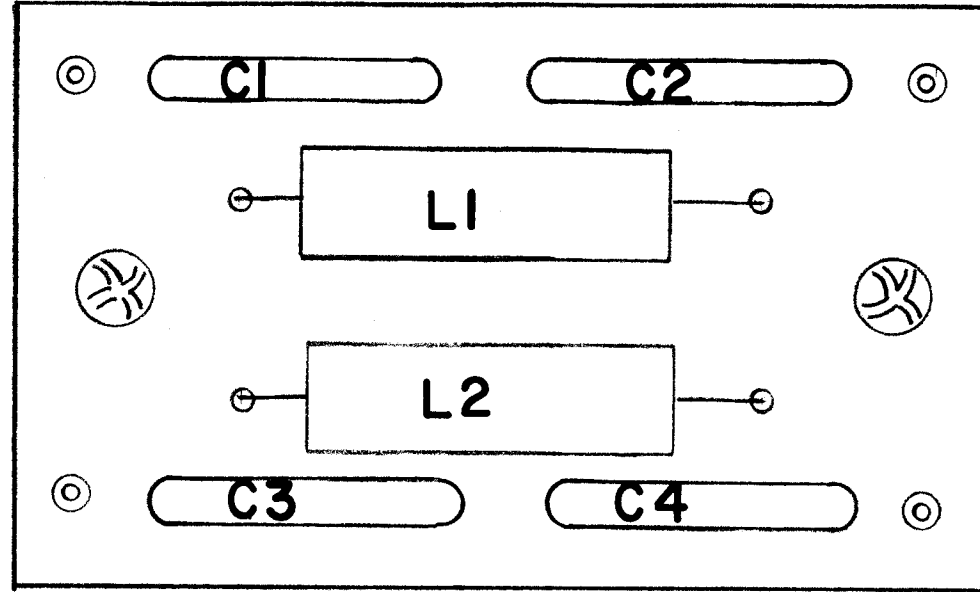


REVISIONS							
E.M.N. NO.	DRAFT	CHKD	ZONE	LTR	DESCRIPTION	DATE	APPROVED
~	NYK			φ	ORIGINAL RELEASE FOR PRODUCTION	3-6-80	F.B.



CUT HERE GUARANTEED 11-73

ASSEMBLY NOTES

1. TO MOUNT COMPONENTS INSERT LEADS THROUGH HOLES.
2. CAUTION, WHEN APPLYING HEAT & SOLDER TO LEAD & FOIL.
3. CLEAN & INSPECT AS PER SPEC S676.
4. FOR ELECTRICAL COMPONENT PART NUMBERS REFER TO NPL A5780
5. USE SYMBOL NUMBERS FOR ASSY. REF.

REQ'D	ITEM	PART NUMBER	DESCRIPTION	SYM.
LIST OF MATERIAL				
THE TECHNICAL MATERIEL CORP. MAMARONECK, NEW YORK				
ASSY. PRINTED CIRCUIT BD.				
UNLESS OTHERWISE SPECIFIED DIMENSIONS ARE IN INCHES AND INCLUDE CHEMICALLY APPLIED OR PLATED FINISHES		FINAL APPROVAL <i>0205</i>	DATE	SIZE B
DECIMALS .X ± .05 .XX ± .01 .XXX ± .005		MECH. DES.	DATE	
FRACTIONS 1/64 TOLS. ANGLES 0° -30'		ELECT. DES.	DATE	
MATERIAL		CHECKED	DATE	
FINISH		DRAWN <i>ew</i>	DATE	CODE IDENT. NO. 82679
NOTICE TO PERSONS RECEIVING THIS DRAWING THE TECHNICAL MATERIEL CORPORATION claims proprietary right in the material disclosed hereon. This drawing is issued in confidence for engineering information only and may not be reproduced or used to manufacture anything shown hereon without permission from THE TECHNICAL MATERIEL CORPORATION to the user. This drawing is loaned for mutual assistance and is subject to recall at any time.		DWG NO. A5780		ISSUE φ
QTY / UNIT 1			SCALE	
MODEL USED ON AMC-32A, AMC-8A			SHEET OF	
ASS'Y NO. AMC-32A, AMC-8A			CODE	
APPLICATION AMC-32A, AMC-8A			DRAWING NO.	