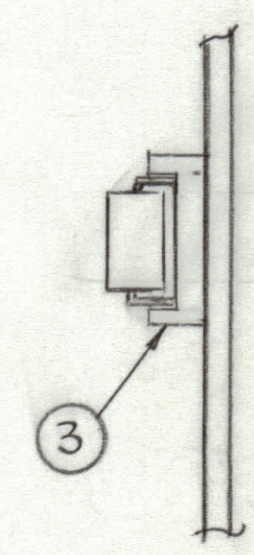
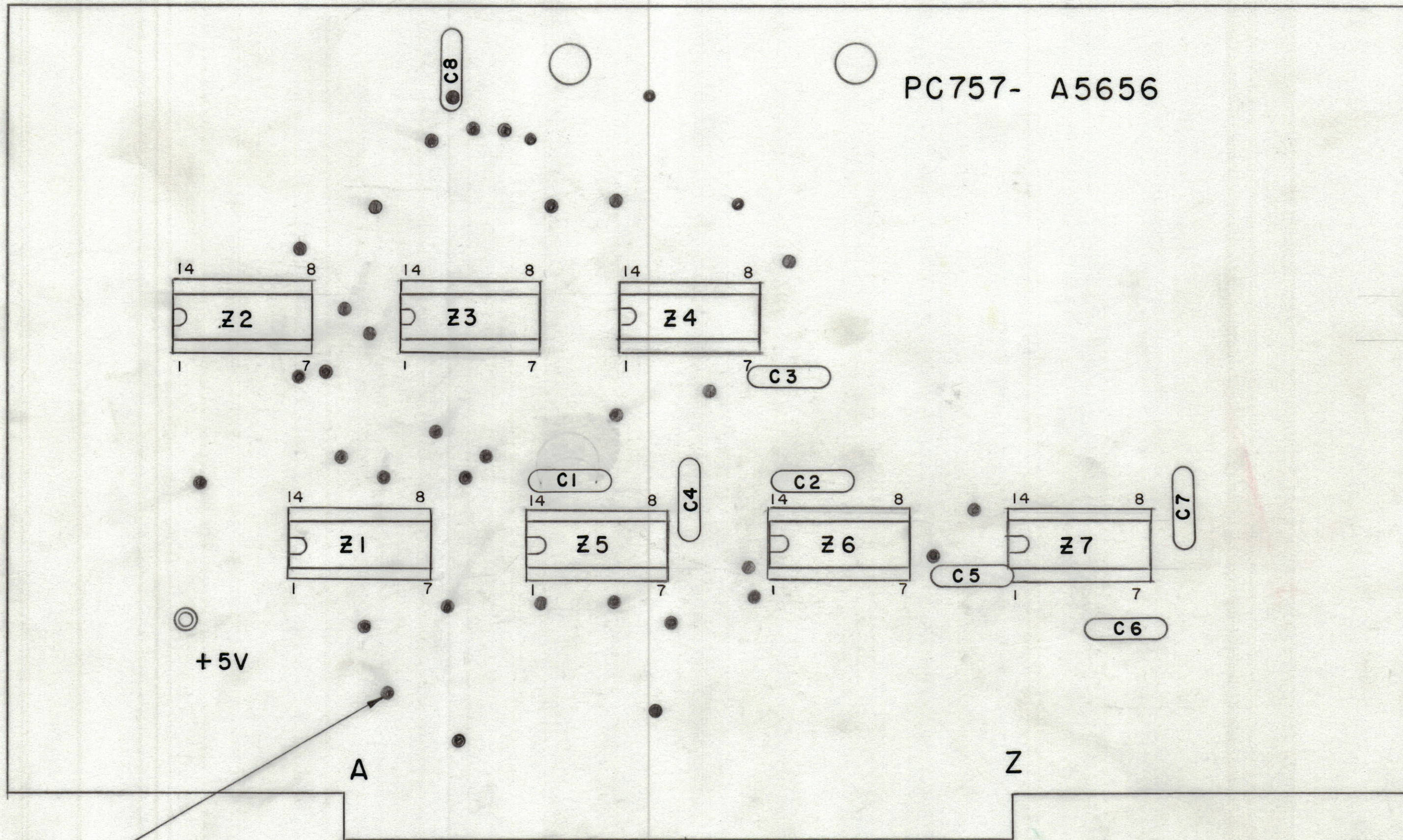


REVISIONS						
ZONE	LTR	DESCRIPTION	DATE	E.M.N.NO	DRAFT	CHKD APPD
	Ø	ORIGINAL RELEASE FOR PRODUCTION	3-9-77		G.D.L	*



QTY. REQ.	ITEM	PART NO.	DESCRIPTION	SYMBOL
7	3	T5211-1	SOCKET, 14 PINS I.C.	XZ1, XZ2, XZ4, XZ5, XZ6, XZ7
X	2	BS100	SOLDER TIN ALLOY	
1	1	PC757	PRINTED CIRCUIT BOARD	

REF: CK2148

- ASSEMBLY NOTES**
1. TO MOUNT COMPONENTS INSERT LEADS THROUGH HOLES.
 2. CAUTION, WHEN APPLYING HEAT & SOLDER TO LEAD & FOIL.
 3. CLEAN & INSPECT AS PER SPEC S676.
 4. FOR ELECTRICAL COMPONENT PART NUMBERS REFER TO NPL A
 5. USE SYMBOL NUMBERS FOR ASSY. REF.

1	ADC-5A	AX5190
QTY / UNIT	MODEL USED ON	ASS'Y NO.
APPLICATION		
CODE		

NOTICE TO PERSONS RECEIVING THIS DRAWING
 THE TECHNICAL MATERIEL CORPORATION claims proprietary right in the material disclosed hereon. This drawing is issued in confidence for engineering information only and may not be reproduced or used to manufacture anything shown hereon without permission from THE TECHNICAL MATERIEL CORPORATION to the user. This drawing is loaned for mutual assistance and is subject to recall at any time.

UNLESS OTHERWISE SPECIFIED DIMENSIONS ARE IN INCHES AND INCLUDE CHEMICALLY APPLIED OR PLATED FINISHES

TOLERANCES ON
 DECIMALS: .X ± .05, .XX ± .01, .XXX ± .005
 FRACTIONS: ± 1/64
 ANGLES: ± 0° -30'

MATERIAL
 FINISH

FINAL APPROVAL OBB	DATE 2/28/77
MECH. DES. L. Uno	DATE 2-17-77
ELECT. DES.	DATE
CHECKED G.D.L	DATE 2-17-77
DRAWN G.D.L	DATE 2-3-77

LIST OF MATERIAL			
THE TECHNICAL MATERIEL CORP. MAMARONECK, NEW YORK			
ASSY PRINTED CIRCUIT BD. CHANNEL & MODE			
SIZE	CODE IDENT.NO.	DWG NO.	ISSUE
C	82679	A 5656	Ø
SCALE 2:1			SHEET OF