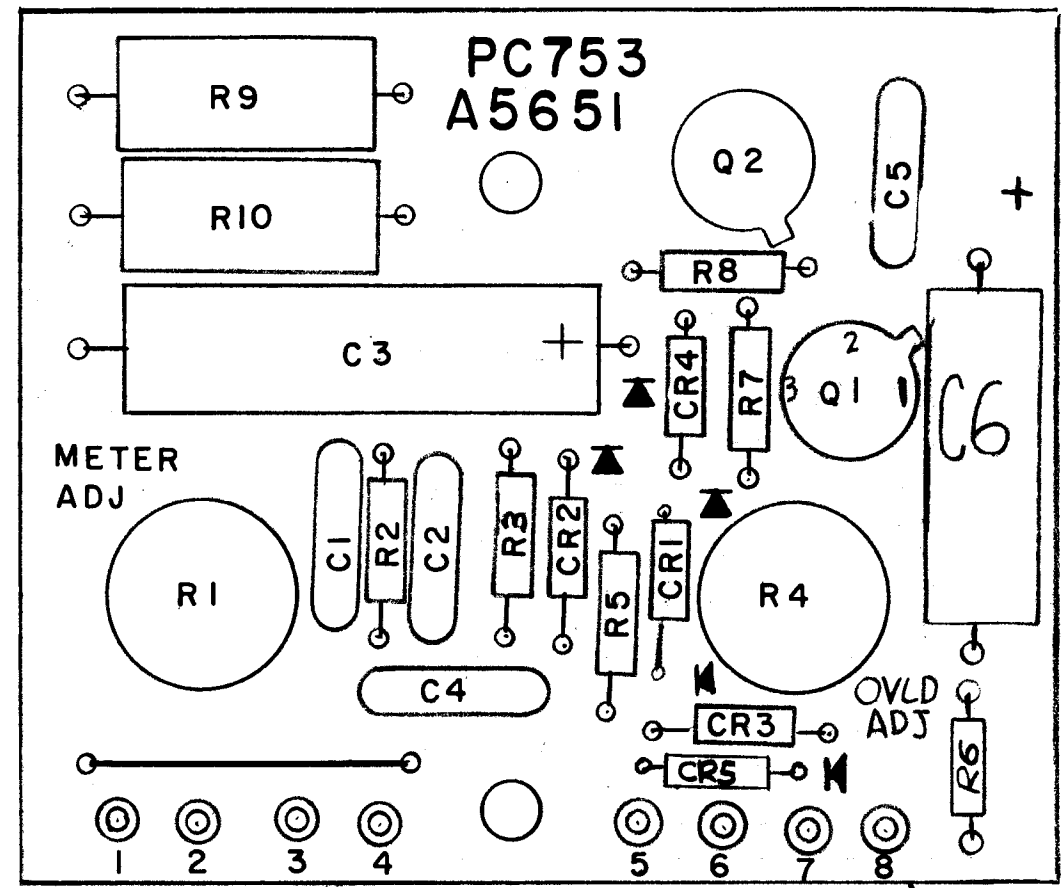


REVISIONS							
E.M.N. NO.	DRAFT	CHKD	ZONE	LTR	DESCRIPTION	DATE	APPROVED
~	RU	M		XI	CR5 Added	3-1-77	
~				Ø	ORIGINAL RELEASE FOR PRODUCTION	3-8-77	*



ASSEMBLY NOTES

1. TO MOUNT COMPONENTS INSERT LEADS THROUGH HOLES.
2. CAUTION, WHEN APPLYING HEAT & SOLDER TO LEAD & FOIL.
3. CLEAN & INSPECT AS PER SPEC S676.
4. FOR ELECTRICAL COMPONENT PART NUMBERS REFER TO NPL A
5. USE SYMBOL NUMBERS FOR ASSY. REF.

1

Z104

1	HFL-100( )	
QTY / UNIT	MODEL USED ON	ASS'Y NO.
APPLICATION		
	CODE	

**NOTICE TO PERSONS RECEIVING THIS DRAWING**  
 THE TECHNICAL MATERIEL CORPORATION claims proprietary right in the material disclosed hereon. This drawing is issued in confidence for engineering information only and may not be reproduced or used to manufacture anything shown hereon without permission from THE TECHNICAL MATERIEL CORPORATION to the user. This drawing is loaned for mutual assistance and is subject to recall at any time.

UNLESS OTHERWISE SPECIFIED DIMENSIONS ARE IN INCHES AND INCLUDE CHEMICALLY APPLIED OR PLATED FINISHES	FINAL APPROVAL <i>JB</i>	DATE <i>3/1/77</i>
DECIMALS .X ± .05 .XX ± .01 .XXX ± .005	MECH. DES. <i>JB</i>	DATE
FRACTIONS 1/64 ANGLES 0° - 30'	ELECT. DES.	DATE
MATERIAL	CHECKED	DATE
FINISH	DRAWN <i>G.D.L</i>	DATE <i>11-8-76</i>

REQ'D	ITEM	PART NUMBER	DESCRIPTION	SYM.
X	2	BS100	SOLDER TIN ALLOY	
1	1	PC753	PRINTED CIRCUIT BD	

LIST OF MATERIAL

THE TECHNICAL MATERIEL CORP.  
 MAMARONECK, NEW YORK

ASS'Y PRINTED CIRCUIT BD  
 METER, OVLD ADJUST

SIZE	CODE IDENT. NO.	DWG NO.	ISSUE
B	82679	A5651	Ø
SCALE	2/1	SHEET	OF