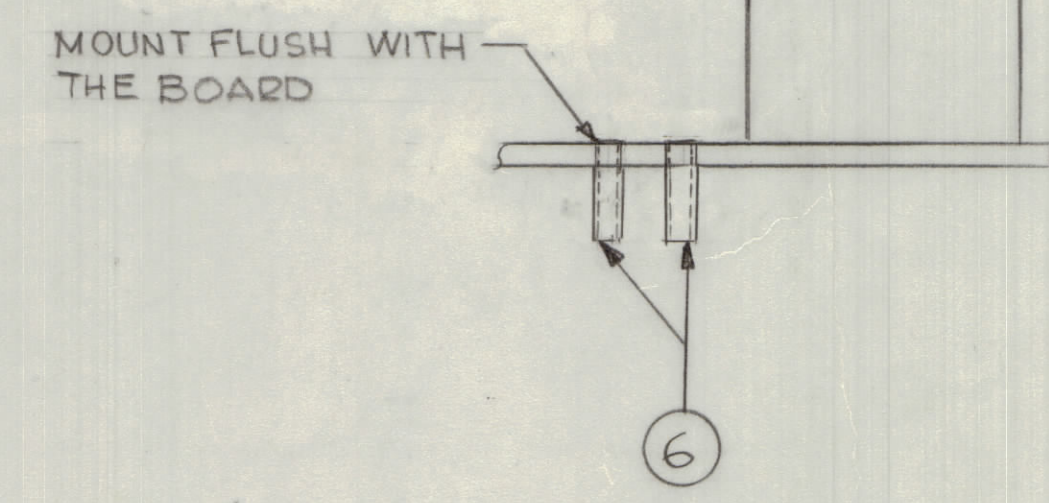
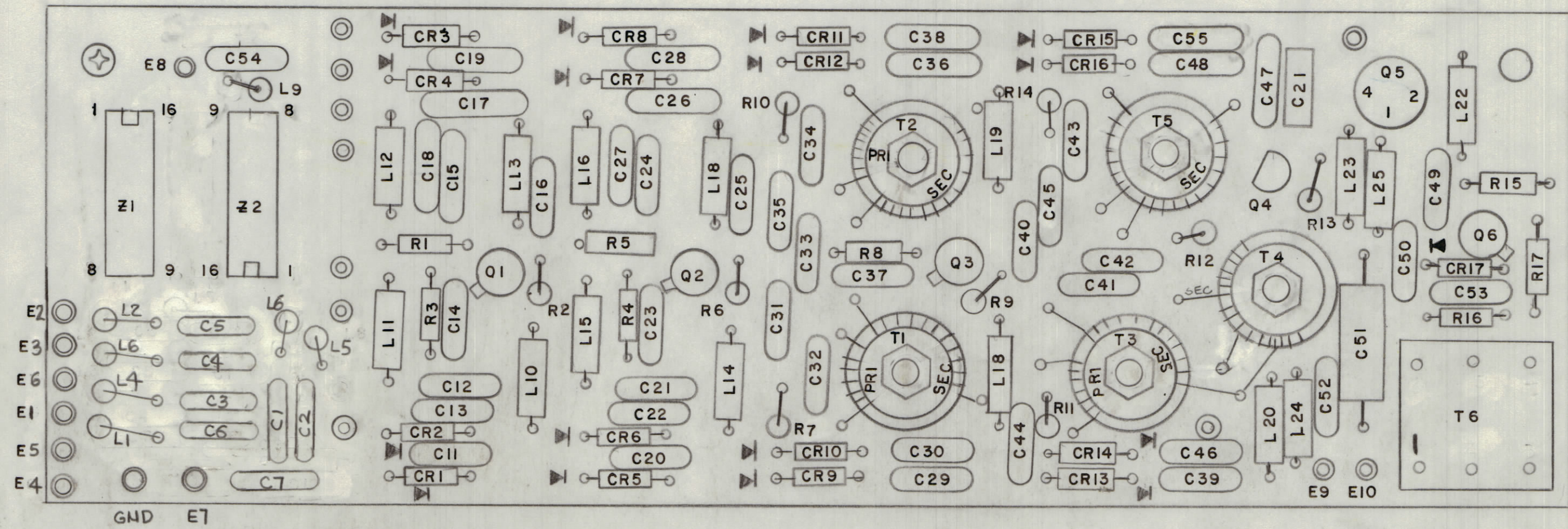
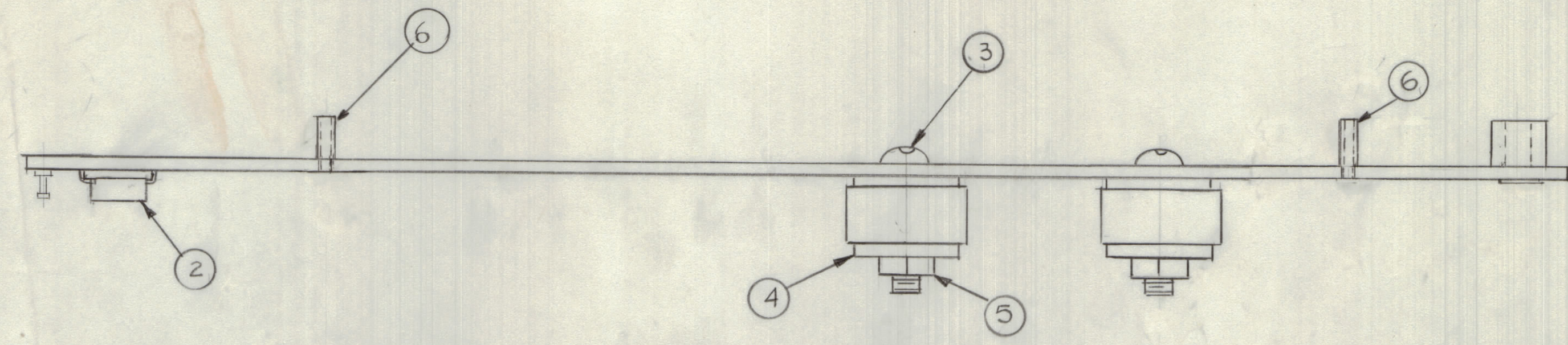


| REVISIONS |       |      |      |     |                         |          |
|-----------|-------|------|------|-----|-------------------------|----------|
| E.M.N.O   | DRAFT | CHKD | ZONE | LTR | DESCRIPTION             | DATE     |
|           |       |      |      | X1  | E1 THRU EG AREA REVISED | 12-23-76 |



- ASSEMBLY NOTES**
1. TO MOUNT COMPONENTS INSERT LEADS THROUGH HOLES.
  2. CAUTION, WHEN APPLYING HEAT & SOLDER TO LEAD & FOIL.
  3. CLEAN & INSPECT AS PER SPEC S676.
  4. FOR ELECTRICAL COMPONENT PART NUMBERS REFER TO NPL A
  5. USE SYMBOL NUMBERS FOR ASSY. REF.

|   |               |           |
|---|---------------|-----------|
| 1   | GPR-110 A     |           |
| QTY / UNIT  | MODEL USED ON | ASS'Y NO. |
| APPLICATION   |               |           |
| CODE  |               |           |
| <small>NOTICE TO PERSONS RECEIVING THIS DRAWING</small><br><small>THE TECHNICAL MATERIEL CORPORATION claims proprietary right in the material disclosed herein. This drawing is issued in confidence for engineering information only and may not be reproduced or used to manufacture anything shown hereon without permission from THE TECHNICAL MATERIEL CORPORATION to the user. This drawing is loaned for mutual assistance and is subject to recall at any time.</small> |               |           |

|   |           |
|---|-----------|
| UNLESS OTHERWISE SPECIFIED DIMENSIONS ARE IN INCHES AND INCLUDE CHEMICALLY APPLIED OR PLATED FINISHES |           |
| TOLERANCES ON   |           |
| DECIMALS  | FRACTIONS |
| .X ± .05  | ± 1/64    |
| .XX ± .01   | ANGLES    |
| .XXX ± .005   | ± 0° -30' |
| MATERIAL  |           |
| FINISH  |           |

| QTY. REQ. | ITEM | PART NO.      | DESCRIPTION           | SYMBOL |
|-----------|------|---------------|-----------------------|--------|
| 10        | 6    | JJ 357-2      | CONNECTOR, PIN & JACK |        |
| 2         | 5    | NT137-0632    | NUT, HEX NYLON        |        |
| 4         | 4    | WA109-54      | WASHER, FIBER         |        |
| 2         | 3    | SC1430632BN10 | SCREW MACHINE NYLON   |        |
| 2         | 2    | TS211-2       | SOCKET I.C.           |        |
| 1         | 1    | PC749         | PRINTED CIRCUIT BOARD |        |

|                   |  |               |  |                        |
|-------------------|--|---------------|--|------------------------|
| FINAL APPROVAL    |  | DATE          | <b>THE TECHNICAL MATERIEL CORP.</b><br>MAMARONECK, NEW YORK<br><br><b>ASSY PRINTED CIRCUIT BOARD</b><br><b>II (PRESELECTOR) MULTI BAND</b> |                        |
| MECH. DES.        |  | DATE          |  |                        |
| ELECT. DES.       |  | DATE          |  |                        |
| CHECKED           |  | DATE          |  |                        |
| DRAWN G. De LUCIA |  | DATE 11-24-76 | SIZE   | CODE IDENT NO. DWG NO. |
|                   |  |               | D 82679  | A5646                  |
|                   |  |               | ISSUE  | X1                     |
| SCALE 2:1         |  |               | SHEET OF   |                        |