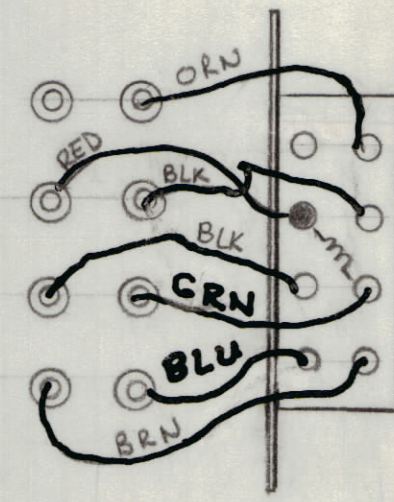
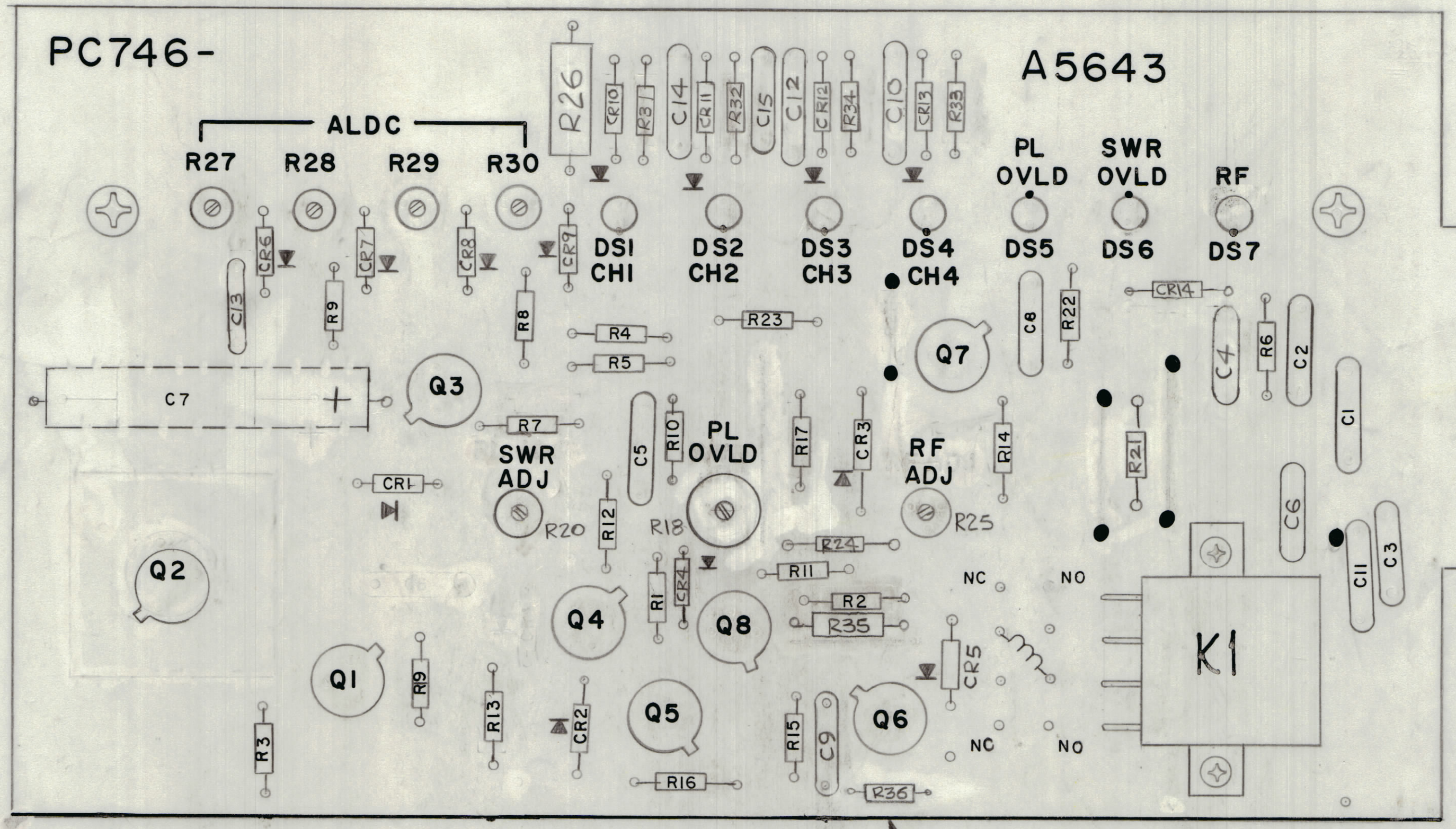
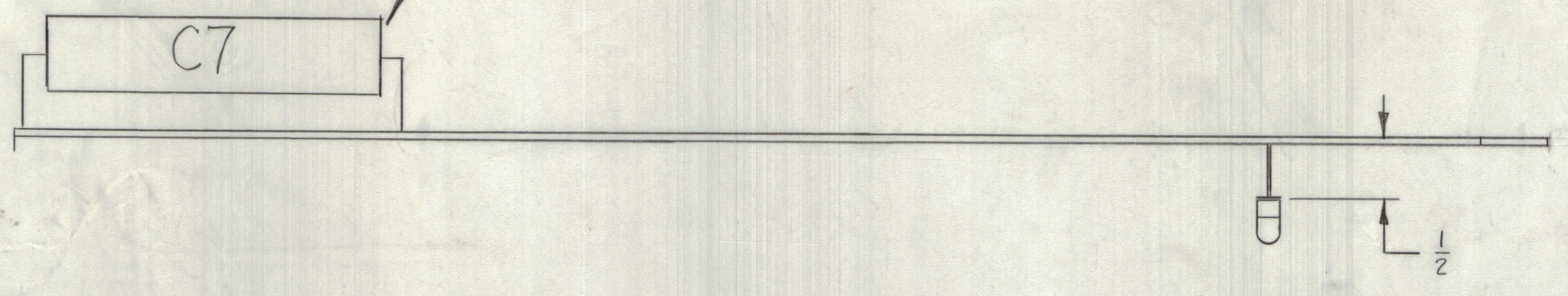


REVISIONS							
E.M.N.O	DRAFT	CHKD	ZONE	LTR	DESCRIPTION	DATE	APPROVED
					C7 Leads Res Added & Mounting Clarified	12-14-76	
ORIGINAL RELEASE FOR PRODUCTION						5-13-77	

MOUNT C3 ON REAR OF BOARD



- ASSEMBLY NOTES**
1. TO MOUNT COMPONENTS INSERT LEADS THROUGH HOLES.
 2. CAUTION, WHEN APPLYING HEAT & SOLDER TO LEAD & FOIL.
 3. CLEAN & INSPECT AS PER SPEC 5676.
 4. FOR ELECTRICAL COMPONENT PART NUMBERS REFER TO NPL A
 5. USE SYMBOL NUMBERS FOR ASSY. REF.

Z101

QTY. REQ.	ITEM	PART NO.	DESCRIPTION	SYMBOL
X	2	BS100	SOLDER TIN ALLOY	
1	1	PC746	PRINTED CIRCUIT BD	

REF: CK2132

UNLESS OTHERWISE SPECIFIED DIMENSIONS ARE IN INCHES AND INCLUDE CHEMICALLY APPLIED OR PLATED FINISHES	
DECIMALS	FRACTIONS
.X ± .05	± 1/64
.XX ± .01	ANGLES
.XXX ± .005	± 0° -30'

QTY / UNIT	MODEL USED ON	ASSY NO.
1	TMA-1KC	
APPLICATION		
CODE		

NOTICE TO PERSONS RECEIVING THIS DRAWING
 THE TECHNICAL MATERIEL CORPORATION claims proprietary right in the material disclosed hereon. This drawing is issued in confidence for engineering information only and may not be reproduced or used to manufacture anything shown hereon without permission from THE TECHNICAL MATERIEL CORPORATION to the user. This drawing is loaned for mutual assistance and is subject to recall at any time.

LIST OF MATERIAL			
THE TECHNICAL MATERIEL CORP. MAMARONECK, NEW YORK			
ASSY, PRINTED CIRCUIT BD INDICATORS & ADJUSTS			
SIZE	CODE IDENT NO	DWG NO.	ISSUE
D	82679	A5643	Ø
SCALE 1:1			SHEET OF