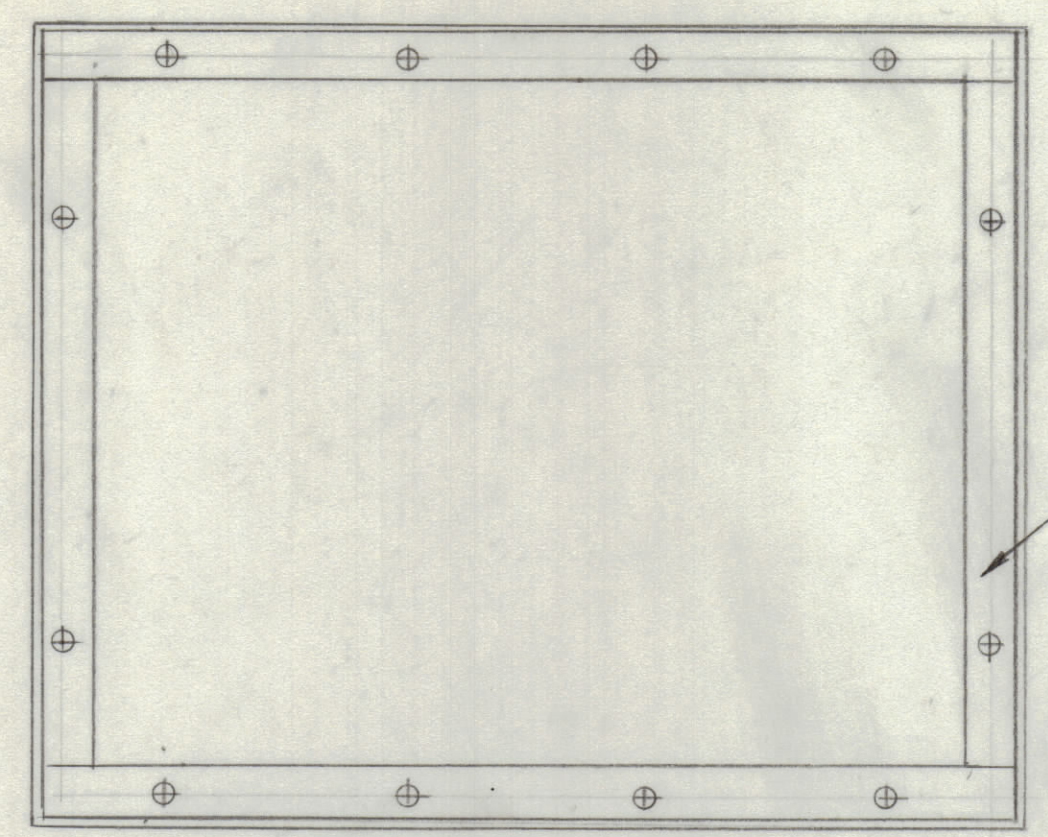
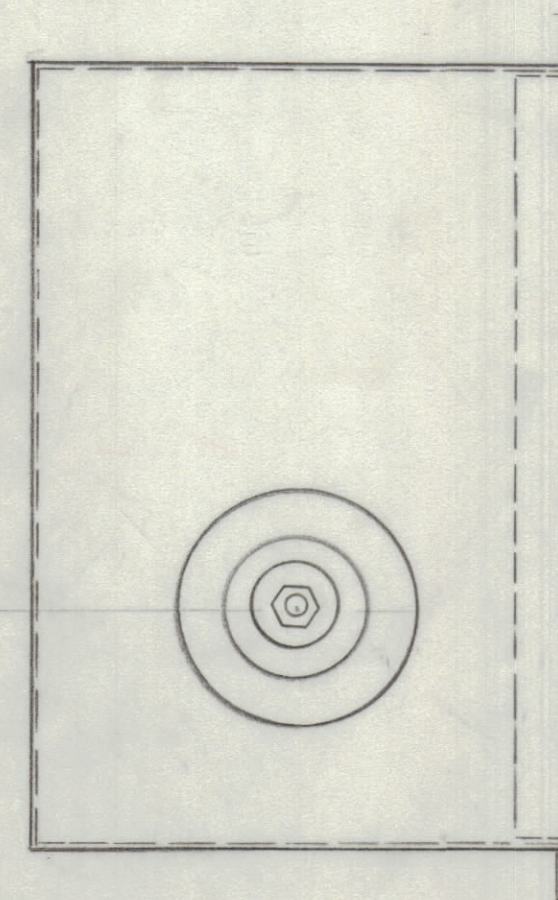
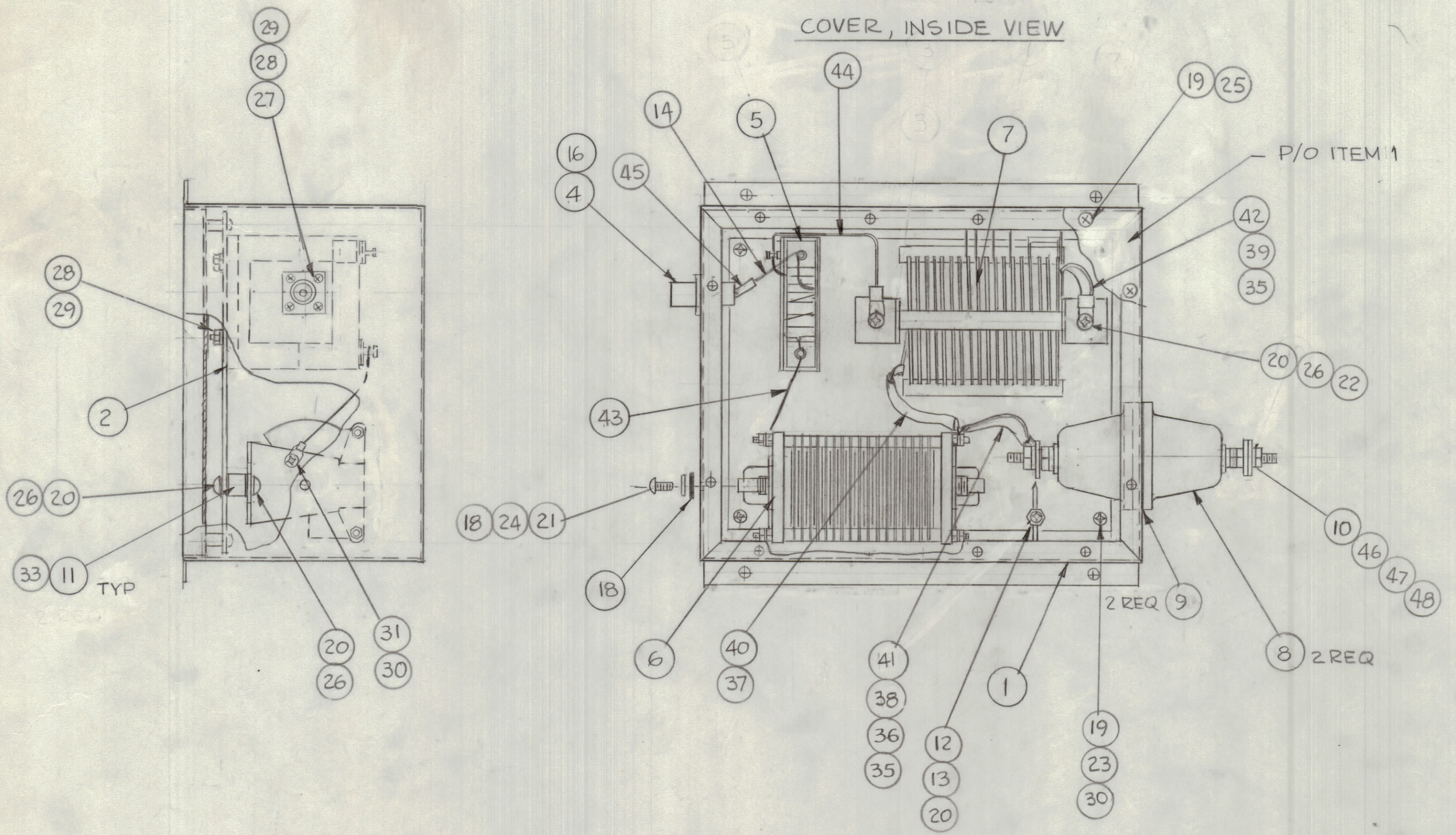


REVISIONS							
E.M.N.O	DRAFT	CHKD	ZONE	LTR	DESCRIPTION	DATE	APPROVED
	GD			X	EXP. RELEASE		
	GD			X	ITEM 3 DELETED	2-20-75	
	CL			Ø	ORIGINAL RELEASE FOR PRODUCTION	4/1/75	
21241	GD	<i>[Signature]</i>		A	ADD ITEM 19 THRU 48 - ITEM 15 DEL. ITEM 32 MISSING ITEM 11 WAS NS 3W0204	7-11-75	



USING ADHESIVE PLOIBOND
JOIN TOGHETER, 3/4" TAPE
SPLICIND COMPOUND WITH
COVER ALL AROUND

COVER, INSIDE VIEW



QTY.	ITEM	PART NO.	DESCRIPTION	SYMBOL
2	48	GA 137-1	GASKET, NEOPRENE	
4	47	LW525 HBN	WASHER, SPR TENS	
5	46	NTH2520BN16	NUT, HEX	
X	45	PX830-16-1	SLEEVING, SHRINK	
1	44	CA409-253-5.00	LEAD, ELEC.	
1	43	CA409-253-4.00	LEAD, ELEC.	
1	42	MS 783-3-165	STRAP, COPPER	
1	41	MS 783-3-305	STRAP, COPPER	
1	40	MS 783-3-385	STRAP, COPPER	
1	39	PX370-4-7-1.50	SLEEVE, TEFLON	
1	38	PX370-6-7-3.25	SLEEVE, TEFLON	
1	37	PX370-4-7-4.25	SLEEVE, TEFLON	
1	36	TE 141-4	TERM. LUG	
2	35	TE 141-1	TERM. LUG	
2	34	TE 156-32945	TERM. LUG	
4	33	WA109-46	WASHER, NON-METALLIC	
	32			
1	31	SCB0632 BN3	SCREW, MACH	
19	30	LWE06 MN	WASHER, SPR TENS	
7	29	NTH0440 BN6	NUT, HEX	
8	28	LWE04 MN	WASHER, SPR TENS	
4	27	SCBP0440 BN5	SCREW, MACHINE	
7	26	LWI08 MN	WASHER, SPR, TENS	
14	25	LWI06 MN	WASHER, SPR, TENS.	
5	24	FW25 HBN	WASHER, FLAT	
4	23	FW06 HBN	WASHER, FLAT	
2	22	NTH0832 BN8	NUT, HEX	
1	21	SCBP2520 BN7	SCREW, MACHINE	
7	20	SCBP0832 BN5	SCREW, MACHINE	
18	19	SCBP0632 BN5	SCREW, MACHINE	
1	18	GA 104	GASKET, NEOPRENE	
X	17	BS 100	SOLDER, TIN ALLOY	
1	16	GA 149-4	GASKET	
	15		DELETED	
X	14	WI 139-2	WIRE ELECTRICAL INSUL	
1	13	PM 103	SPARK ROD	
1	12	PM721-2NR1-87	POST	
2	11	NS 3W0204	INSULATOR STANDOFF	
1	10	SM 3118 BP 5.750	ROD, THREADED	
1	9	GA 126	GASKET, INNER	
2	8	NS 115	CAP, INSULATING	
1	7	A 5622	ASSY, COIL RF	
1	6	CB 138-3-A-H	CAPACITOR, VARIABLE	
1	5	TR 204	TRANSFORMER RF	
1	4	SO239A	CONNECTOR RF	
	3		DELETED	
1	2	MS 6611	PLATE MOUNTING	
1	1	MS 6609	ANTENNA TUNER CASE	

LIST OF MATERIAL			
THE TECHNICAL MATERIEL CORP. MAMARONECK, NEW YORK			
ASSY ANTENNA TUNER ATU-1K			
SIZE	CODE IDENT NO.	DWG NO.	ISSUE
D	82679	A 5621	A
SCALE 1:2		SHEET OF	

ATU-1K		
QTY / UNIT	MODEL USED ON	ASS'Y NO.
APPLICATION		
CODE		
<small>NOTICE TO PERSONS RECEIVING THIS DRAWING</small> <small>THE TECHNICAL MATERIEL CORPORATION claims proprietary right in the material disclosed herein. This drawing is issued in confidence for engineering information only and may not be reproduced or used to manufacture anything shown hereon without permission from THE TECHNICAL MATERIEL CORPORATION to the user. This drawing is loaned for mutual assistance and is subject to recall at any time.</small>		
MATERIAL		
FINISH		

UNLESS OTHERWISE SPECIFIED DIMENSIONS ARE IN INCHES AND INCLUDE CHEMICALLY APPLIED OR PLATED FINISHES	FINAL APPROVAL <i>[Signature]</i>	DATE 3/25/75
TOLERANCES ON	MECH. DES.	DATE
DECIMALS	ELECT. DES.	DATE
.X ± .05	CHECKED	DATE
.XX ± .01	DRAWN G. De Lucia	DATE 3-7-75
.XXX ± .005		