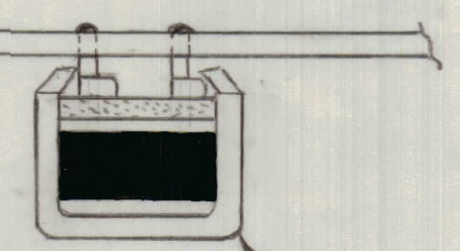
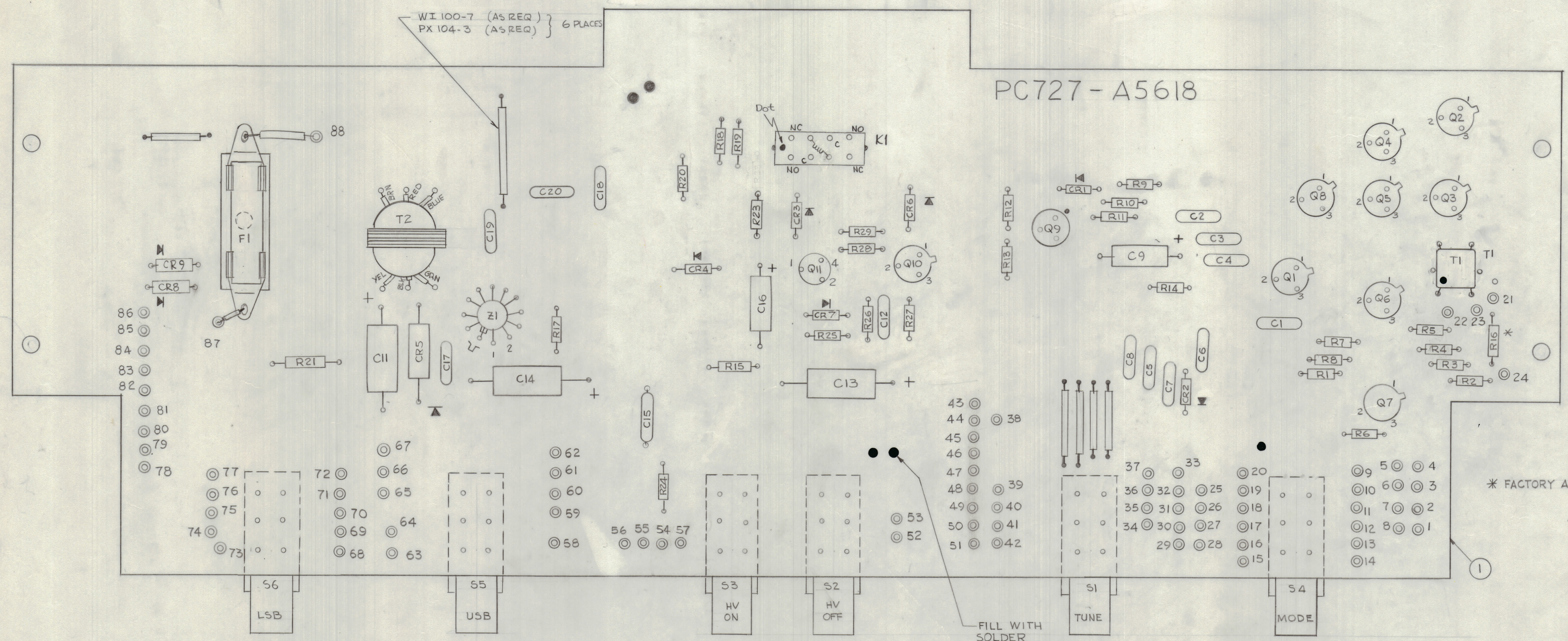


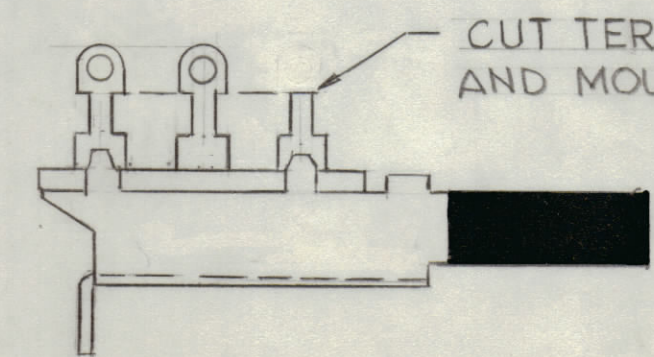
REVISIONS							
E.M.N.O	DRAFT	CHKD	ZONE	LTR	DESCRIPTION	DATE	APPROVED
				X	EXP. RELEASE	3-7-75	
				XI	K1, CR8, CR9 Added	5-28-75	
	cl				ORIGINAL RELEASE FOR PRODUCTION	6/6/75	

ASSEMBLY NOTES

1. TO MOUNT COMPONENTS INSERT LEADS THROUGH HOLES.
2. CAUTION, WHEN APPLYING HEAT & SOLDER TO LEAD & FOIL.
3. CLEAN & INSPECT AS PER SPEC S676.
4. FOR ELECTRICAL COMPONENT PART NUMBERS REFER TO NPL A5618
5. USE SYMBOL NUMBERS FOR ASSY. REF.



TYPICAL 6 PLACES
(SEE DETAIL "A")



CUT TERMINAL AREA OFF
AND MOUNT FLUSH TO BOARD

DETAIL "A"

1	AX5189	
QTY / UNIT	MODEL USED ON	ASS'Y NO.
APPLICATION		
CODE		

NOTICE TO PERSONS RECEIVING THIS DRAWING
THE TECHNICAL MATERIEL CORPORATION claims proprietary right in the material disclosed hereon. This drawing is issued in confidence for engineering information only and may not be reproduced or used to manufacture anything shown hereon without permission from THE TECHNICAL MATERIEL CORPORATION to the user. This drawing is loaned for mutual assistance and is subject to recall at any time.

UNLESS OTHERWISE SPECIFIED DIMENSIONS ARE IN INCHES AND INCLUDE CHEMICALLY APPLIED OR PLATED FINISHES	
TOLERANCES ON DECIMALS .X ± .05 .XX ± .01 .XXX ± .005	FRACTIONS ± 1/64 ANGLES ± 0° - 30'
MATERIAL	
FINISH	

X	2	BS 100	SOLDER TIN ALLOY	
1	1	PC 727	PRINTED CIRCUIT BD	
QTY. REQ.	ITEM	PART NO.	DESCRIPTION	SYMBOL
LIST OF MATERIAL				
FINAL APPROVAL	DATE	THE TECHNICAL MATERIEL CORP. MAMARONECK, NEW YORK		
MECH. DES.	DATE	ASSY PRINTED CIRCUIT BD. OVERALL CHASSIS		
ELECT. DES.	DATE	SIZE	CODE IDENT NO. DWG NO.	ISSUE
CHECKED	DATE	D	82679 A5618	1
DRAWN	DATE	SCALE 2:1 SHEET OF		
GDL	3-6-75			