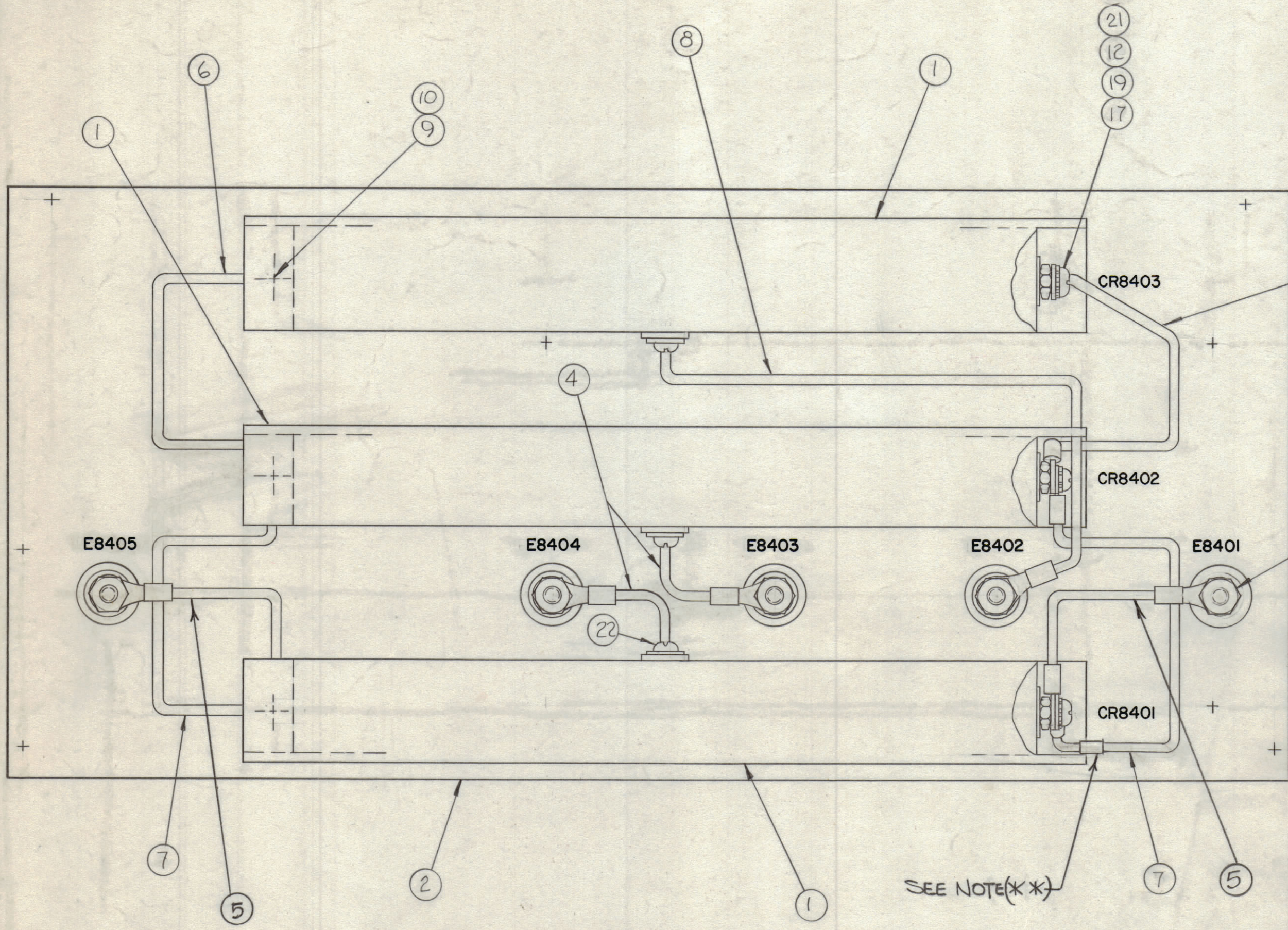


REVISIONS							
ZONE	SYM	DESCRIPTION	DATE	E.M.N. NO.	DRAFT	CHKD	APPD
	Q	ORIGINAL RELEASE FOR PRODUCTION	8-3-66	Q	RME		
A		ADD (***) NOTE & CALLOUT (5)	5/16/67	18223	HLR	HLR	FB



* NOTE
 ITEMS 11, 13, 14, & 18 ARE SHIPPED
 AS LOOSE ITEMS PACKED IN
 ITEM 15

** NOTE:
 MARK CABLES WITH "W" SYMBOLS
 DURING ASSEMBLY AS PER SCHEMATIC.

REQ'D.	ITEM	PART NUMBER	DESCRIPTION	SYMBOL
3	22	SCBPI032BN6	SCREW, MACHINE	
6	21	SCBPI032BN10	SCREW, MACHINE	
4	20	SCBPI032BN12	SCREW, MACHINE	
4	19	NTH1032BN12	NUT, HEX	
11	18	FW25HBN	WASHER, FLAT NYLON	
23	17	FW10HBN	WASHER, FLAT NYLON	
10	16	NTH1032BNL	NUT, CAP	
*	15	BG101	BAG, BEMIS CLOTH	
6	14	NTH2520BN4	NUT, HEX	
11	13	LWS25MRN	LOCKWASHER, SPRING TYPE	
23	12	LWS10MRN	LOCKWASHER, SPRING TYPE	
6	11	SCBP2520BN12	SCREW, MACHINE	
6	10	NTH137-2520	NUT, NYLON	
6	9	SC143-2520B16	SCREW, MACHINE NYLON	
1	8	CA412-11-16.50	CABLE, ASSEMBLY JUMPER HV	
2	7		7.00	
2	6		6.00	
2	5		4.25	
2	4	CA412-11-3.00	CABLE, ASSEMBLY JUMPER HV	
5	3	AX152	FEEDTHRU, INSULATED	
1	2	PX985/LD2077	BOARD, MTG COMPONENTS	
3	1	DD117	RECT, SILICON DEVICES	

LIST OF MATERIAL				
MATERIAL		THE TECHNICAL MATERIEL CORP. MAMARONECK, NEW YORK		
FINISH		TITLE ASS'Y, RECTIFIER BOARD		
UNLESS OTHERWISE SPECIFIED DIMENSIONS ARE IN INCHES AND INCLUDE CHEMICALLY APPLIED OR PLATED FINISHES		DRAWN LW	DATE 7/7/66	FINAL APPROVAL RME
DECIMALS .X ± .05 .XX ± .01 .XXX ± .005		CHECKED RME	DATE	DATE
TOLERANCES FRACTIONS ± 1/64 ANGLES ± 0° 30'		ELECT. DES. MECH. DES.	DATE	DATE
NOTES		SHEET A5511		
THE CONTENTS OF THIS DRAWING ARE THE EXCLUSIVE PROPERTY OF THE TECHNICAL MATERIEL CORP. ITS UNAUTHORIZED USE OR REPRODUCTION IN WHOLE OR IN PART IS STRICTLY FORBIDDEN.		REV. LTR. A		

KIT 258		
Q'TY./UNIT	MODEL USED ON	ASS'Y. NO.
SCALE	CODE	