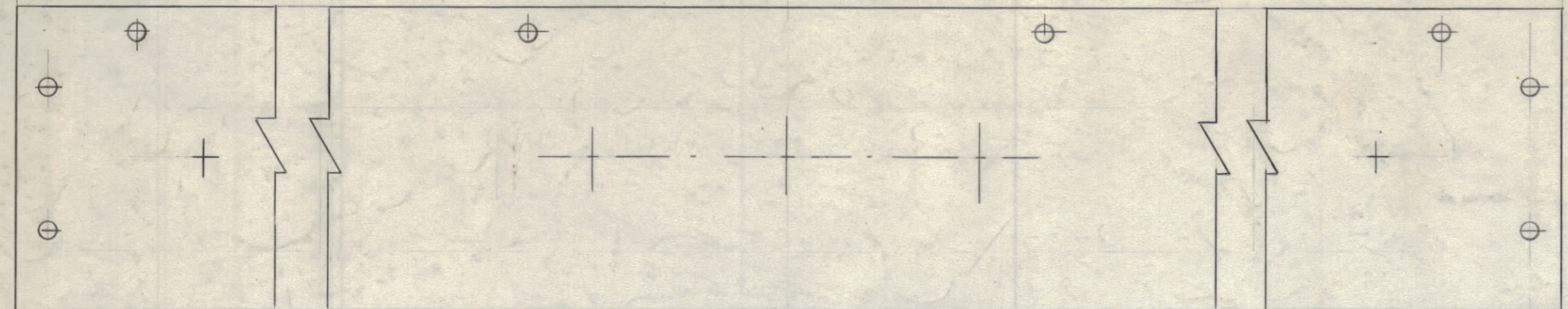
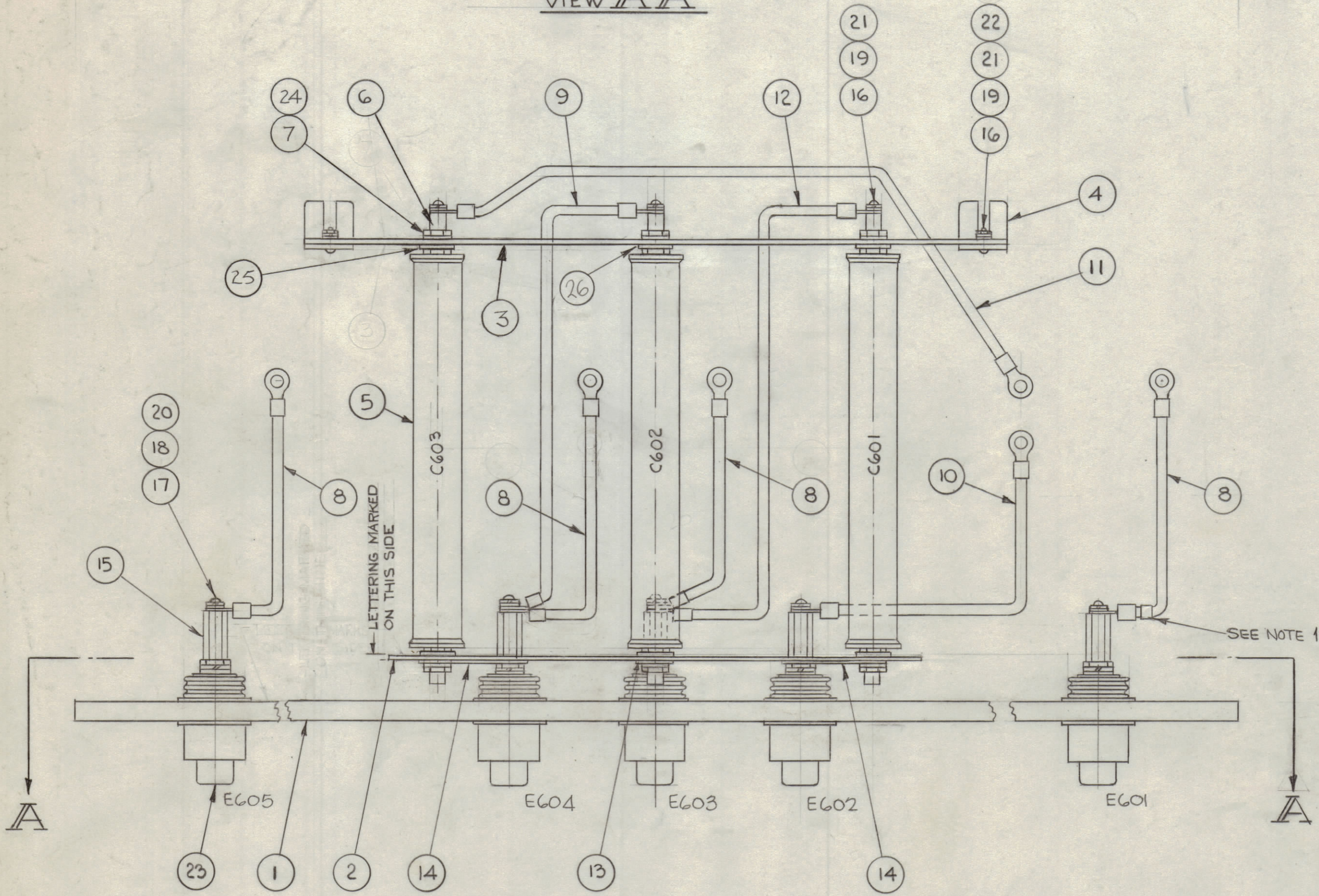


REVISIONS							
ZONE	SYM	DESCRIPTION	DATE	E.M.N. NO.	DRAFT	CHKD	APPD
	Ø	ORIGINAL RELEASE FOR PRODUCTION	9/23/66	M	J		
A		ADD IT. 24 & 25.	1-11-67	17646	RME		
B		ADD IT. 26 & NOTE "1"	5/6/67	18253	RA		FB
C		CHG. P/N ITEM 25 FROM FW37HBN TO FW37LBN	7-13-72	20788	GE	Q	CL



VIEW AA



LETTERING MARKED ON THIS SIDE

SEE NOTE 1

NOTE:
1-MARK CABLES WITH "W" SYMBOLS DURING ASSEMBLY AS PER SCHEMATIC.

REQ'D.	ITEM	PART NUMBER	DESCRIPTION	SYMBOL
6	26	FW25 HBN	WASH, FLAT	
6	25	FW 37 LBN	WASH, FLAT	
6	24	LWI37 LRN	WASH, LOCK, INTERNAL TOOTH	
5	23	AX634-1	CONTACT, FEED THRU ASS'Y	EG01-5
2	22	NTH0832BN10	NUT, HEXAGON	
5	21	LWS08MRN	WASHER, LOCK SPLIT	
5	20	LWS10MRN	WASHER, LOCK SPLIT	
5	19	FW08HBN	WASHER, FLAT	
5	18	FW10HBN	WASHER, FLAT	
5	17	SCBP1032BN5	SCREW, MACHINE	
5	16	SCBP0832BN8	SCREW, MACHINE	
5	15	TE 1032AEG1H	SPACER, THREADED	
2	14	MS3284-45	STRAP, CONNECTING	
1	13	MS3284-44	STRAP, CONNECTING	
1	12	CA412-11-11.50	LEAD, ELECT.	W614
1	11	CA412-11-12.00		W616
1	10	CA412-11-7.50		W611
1	9	CA412-11-10.75		W615
4	8	CA412-11-6.50	LEAD, ELECT.	W610, 612, 613, 617
6	7	NTH 3732 BN16	NUT, HEXAGON	
6	6	PM1299-3	CONTACT, ELECT.	
3	5	CX115-1-50-202	CAPACITOR, FIXED PLASTIC	C601-3
2	4	MS4913	BRACKET, BOARD, MOUNTING, CAPACITORS	
1	3	PX 984	BOARD, MOUNTING, CAPACITORS	
1	2	LD 2074/ PX 986	BOARD, MOUNTING, CAPACITORS	
1	1	LD 2083/ PX 988	BOARD, MOUNTING, CAPACITORS	C601-3

BUDETTI		LIST OF MATERIAL			
MATERIAL		THE TECHNICAL MATERIEL CORP. MAMARONECK, NEW YORK			
FINISH		TITLE CONTACT & CAP ASS'Y			
UNLESS OTHERWISE SPECIFIED DIMENSIONS ARE IN INCHES AND INCLUDE CHEMICALLY APPLIED OR PLATED FINISHES		DRAWN	DATE	FINAL APPROVAL	DATE
DECIMALS X ± .05 .XX ± .01 .XXX ± .005		CHECKED	DATE		
FRACTIONS ± 1/64 ANGLES ± 0° 30'		ELECT. DES.	DATE		
TOLERANCES		MECH. DES.	DATE		
				A5510	C

KIT 257		
Q'TY./UNIT	MODEL USED ON	ASS'Y. NO.
SCALE	CODE	

THE CONTENTS OF THIS DRAWING ARE THE EXCLUSIVE PROPERTY OF THE TECHNICAL MATERIEL CORP. ITS UNAUTHORIZED USE OR REPRODUCTION IN WHOLE OR IN PART IS STRICTLY FORBIDDEN.

NOTES