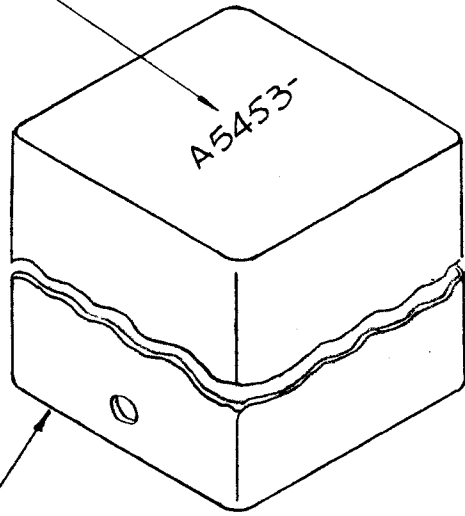
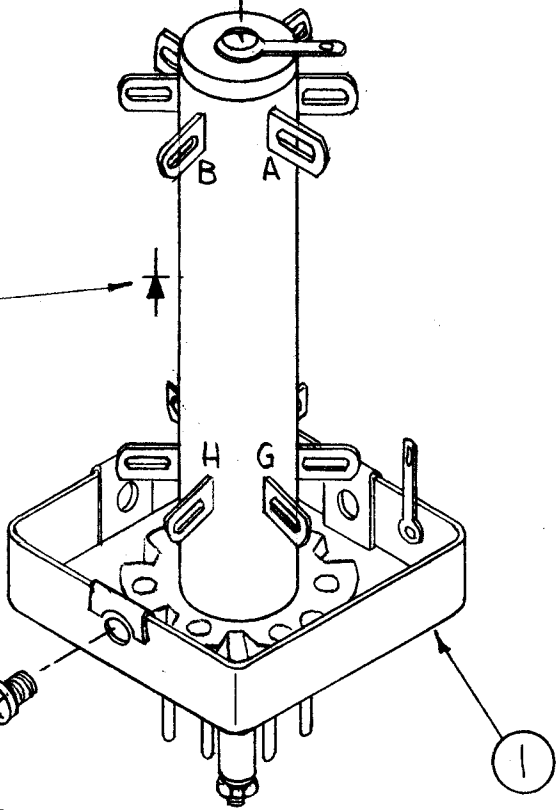


MARK TMC P/N
1/8" HIGH GOTHIC
W/LATEST REV.
LETTER.



PART OF
ITEM 1

DIRECTION
OF ITEM 2



PART OF
ITEM 1
(3 REQ.)

NOTES

WIRING CHART

ITEM	FROM	TO	SYMBOL
2,8	E	J	CR1200
3,8	B	J	C1223
3,8	B	D	C1224
3,8	B	I	C1225
3,8	G	H	C1222
4,8	H	A	C1221
5,8	K	L	C1219
6,8	C	I	R1207
6,8	D	J	R1206
7,8	B	H	---
7,8	E	A	---
7,8	H	K	---
7	D	C	---
7	G	PIN 8 SOCKET	---
7	H	PIN 7	---
7	I	PIN 5	---
7,8	A	PIN 4	---
7	L	PIN 1 SOCKET	---

NOTES:

- 1- PLACE ITEM 8 AT BOTH ENDS OF ITEM.
- 2- ITEMS SHOULD BE MOUNTED AS CLOSE AS POSSIBLE TO CENTER POST. SO THAT COVER CAN FIT.

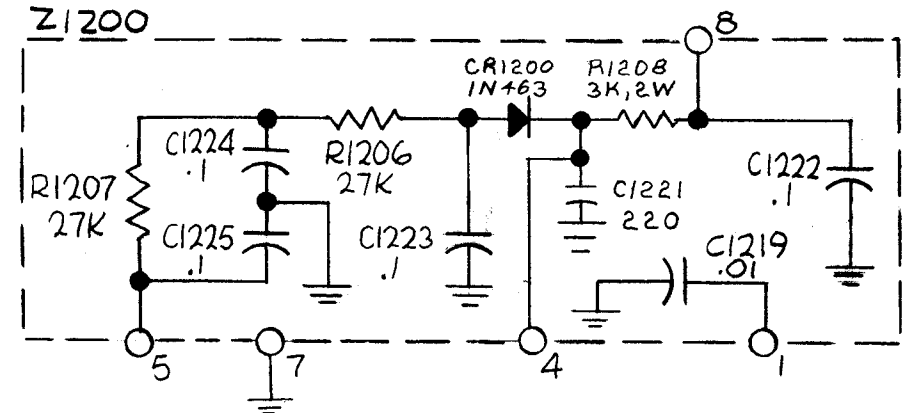
1	GPT-10KLF	AX 531
Q'TY./UNIT	MODEL USED ON	ASS'Y. NO.
SCALE $\frac{1}{2}$	CODE A	

THE CONTENTS OF THIS DRAWING ARE THE EXCLUSIVE PROPERTY OF THE TECHNICAL MATERIEL CORP. ITS UNAUTHORIZED USE OR REPRODUCTION IN WHOLE OR IN PART IS STRICTLY FORBIDDEN.

A5453

REVISIONS

SYM	DESCRIPTION	DATE	E.M.N. NO.	DRAFT	CHKD	APPD
Ø	ORIGINAL RELEASE FOR PRODUCTION	4-7-66	-M-	Jc		
A	REVISED & UPDATED	8-16-71	20433	R#		W. JF



SCHEMATIC - DIAGRAM

REQ'D.	ITEM	PART NUMBER	DESCRIPTION	SYMBOL
1	10	RC426F302J	RES., FXD, COMP.	
X	9	BS100	SOLDER, TIN ALLOY	
X	8	PX104-3-20	INS. SLVG. ELECT.	
X	7	WL100-7	WIRE, ELECT, BUSS	
2	6	RC206F273J	RES, FXD, COMP.	
1	5	CM35F103F03	CAP, FXD, MICA.	
1	4	CM15F221G03	CAP, FXD, MICA	
4	3	CC100-37	CAP, FXD, CER.	
1	2	IN463	DIODE	
1	1	PO10G-3T	PLUG IN SOCKET TURRET	

F. BUDETTI		LIST OF MATERIAL			
MATERIAL		THE TECHNICAL MATERIEL CORP. MAMARONECK, NEW YORK			
FINISH		TITLE ALDC NETWORK ASSY			
UNLESS OTHERWISE SPECIFIED DIMENSIONS ARE IN INCHES AND INCLUDE CHEMICALLY APPLIED OR PLATED FINISHES		DRAWN <i>[Signature]</i>	DATE 4-4-66	FINAL APPROVAL <i>[Signature]</i>	DATE 4/7/66
DECIMALS .X ± .05 .XX ± .01 .XXX ± .005		CHECKED <i>[Signature]</i>	DATE 4-6-66	A5453	
FRACTIONS ± 1/64 ANGLES ± 0° 30'		ELECT. DES. <i>[Signature]</i>	DATE	A	
TOLERANCES		MECH. DES. <i>[Signature]</i>	DATE	SHEET	