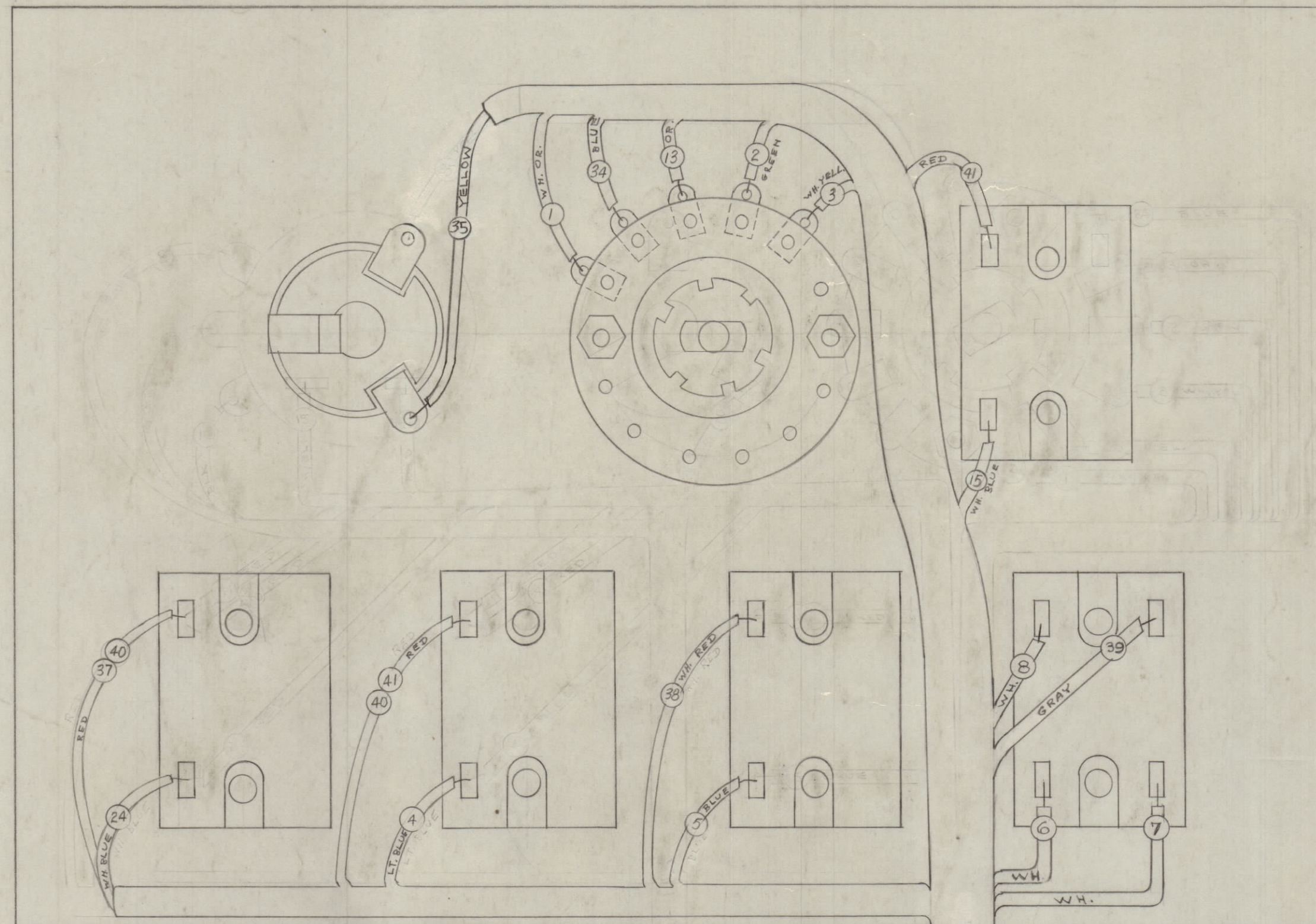


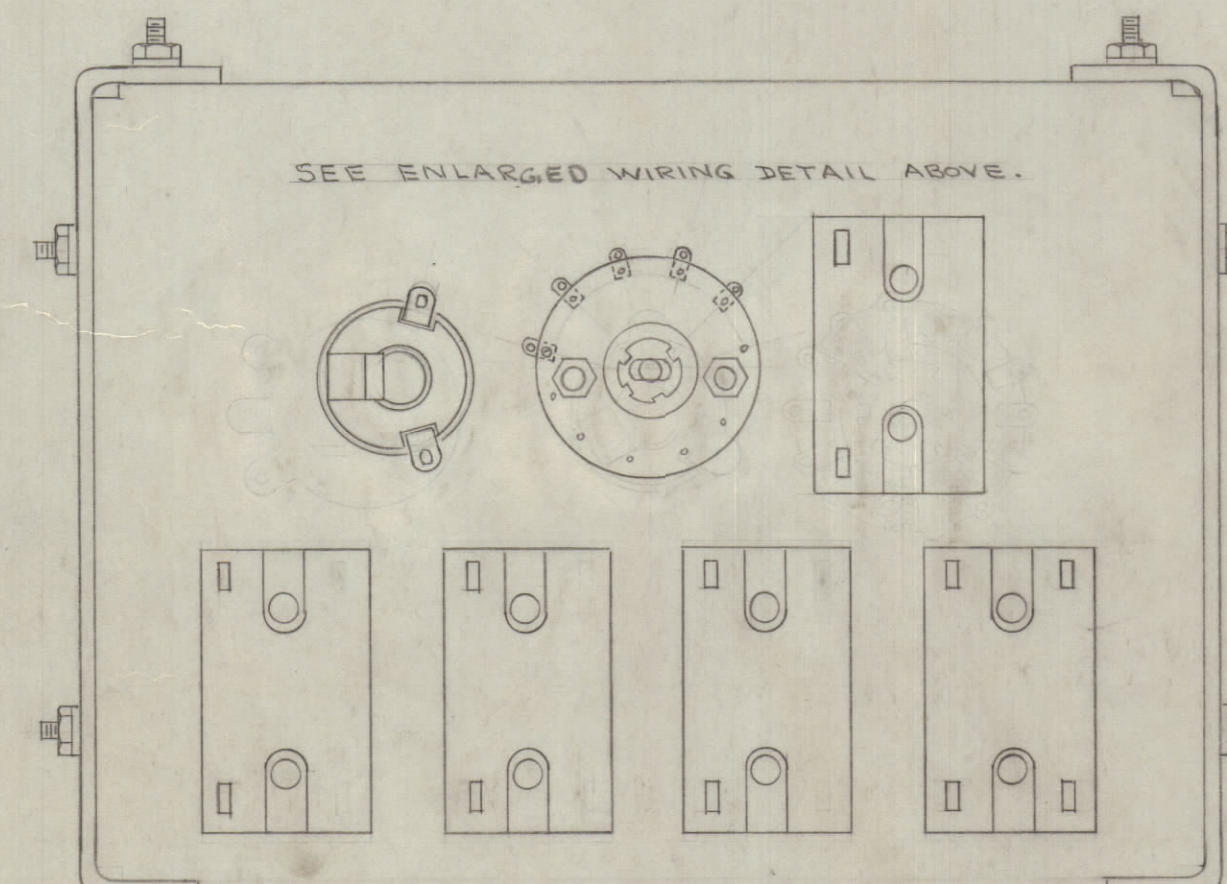
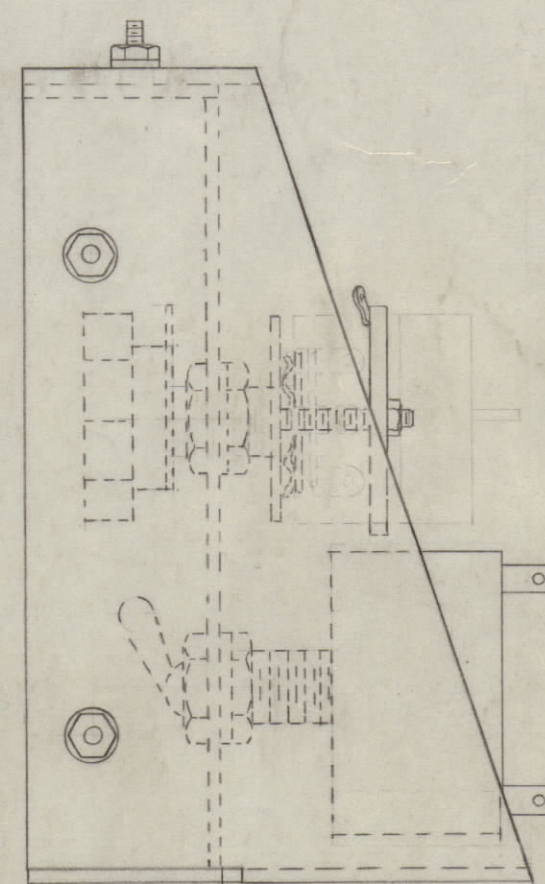
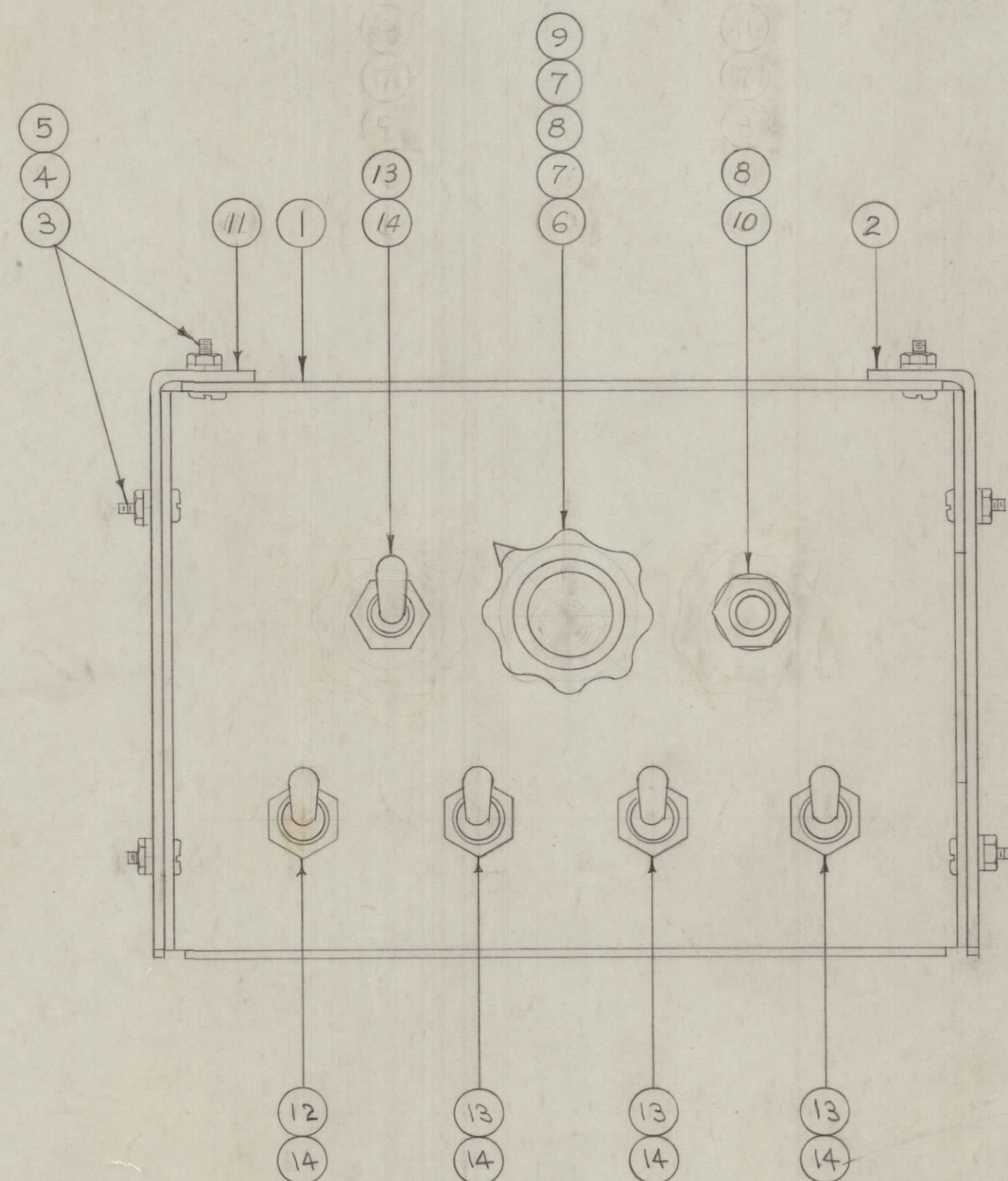
IF IT IS FOUND DESIRABLE TO CHANGE ANY TOLERANCE OR OTHER DETAIL SPECIFIED ON THIS DRAWING NOTIFY THE PURCHASER PROMPTLY.
 MAXIMUM ALLOWABLE TOLERANCES HAVE BEEN DETERMINED AND DEVIATIONS WILL BE CAUSE FOR REJECTION. REMOVE ALL BURRS AND SHARP EDGES



ENLARGED WIRING DETAIL

NOTE:
 WIRE NUMBERS SHOWN
 CORRESPOND TO WIRE
 NUMBERS ON CABLE

CABLE SHOWN FOR REF ONLY
 (CA116 FOR VOX, -1, -2, -3 & -4)
 (CA598 FOR VOX-5 & -6)



NOTICE TO PERSONS RECEIVING THIS DRAWING

THE TECHNICAL MATERIEL CORPORATION claims proprietary right in the material disclosed herein. This drawing is issued in confidence for engineering information only and may not be reproduced or used to manufacture anything shown hereon without permission from THE TECHNICAL MATERIEL CORPORATION to the user. This drawing is loaned for mutual assistance and is subject to recall at any time.

Property of:
 THE TECHNICAL MATERIEL CORPORATION
 MAMARONECK, NEW YORK

5-102
 5-103
 5-104
 5-106

F	CABLE NOTE WAS SEE CHY B/M UPDATED (15)	1-6-67	17463	LHO	QC
E	RELOCATED IT 35 (ON PICT)	3-28-66	16029	HLA	QC
D	ITEM 15 ADDED				
	ITEM 8 WAS CHG 3725W	7-5-61	5173	G+L	RU
	ITEM 6 WAS QUAN 2				
	ITEM 1 (MS-603) ADDED				
C	2 QUANT. FOR ITEM (DIMS 2)	3/26/61	4497	JM	QC
	ALL HARDWARE WAS COPPER PLATED	9/6/57	2	SC	QC
B	ITEM 1 WAS MS-603	9/6/57	2	SC	QC
A	REVISED AS PTC SPEC 2-258	5-21-51	1	SC	QC

ISSUE ITEM	CHANGED FROM	DATE	CN. NO.	DRAFTS	CHECKER	ENG. APP.
TOLERANCES						
SCALE:						
ALL OTHERS	DEC. DIM. ±	DRILL, PUNCH, COMMERCIAL STOCK				
	FRAC. DIM. ±	SIZES AND MANUFACTURERS				
	ANGULAR DIM. ±	TOLERANCES ARE NOT INCLUDED.				

1	VOX-6				
1	VOX 5				
1	VOX 4				
1	VOX-3				
1	VOX-2				
1	VOX-1				
REQ PER UNIT	MODEL	PROJECT NO.	ASSY. NO.	DATE	
			A-626	11-16-53	
USED ON					

16	DELETED			
X 15	BS-100	SOLDER, SOFT		
5 14	LWI50LRN	WASHER, LOCK		
4 13	ST-12A	SWITCH, TOGGLE		
1 12	ST-22K	SWITCH, TOGGLE		5101
1 11	MS-304-2	SIDE BRACKET, RIGHT		
1 10	JJ-034	JACK		J-105
1 9	SW-105	SWITCH, ROTARY		5-107
2 8	LWI37LRN	WASHER, LOCK		
4 7	NTH37328N16	NUT, HEX		
1 6	MP-100-A	KNOB, INST. TYPE		
8 5	NTH6328NS	NUT, HEX		
8 4	LWI06MRN	WASHER, LOCK		
8 3	SCRPO628N4	SCREW, MACHINE		
1 2	MS-304-1	SIDE BRACKET, LEFT		
1 1	LD212 (MS-603)	ENGRAVING, CONTROL PANEL		
REQ. ITEM	PART NO.	DESCRIPTION		SYMBOL
THE TECHNICAL MATERIEL CORP. MAMARONECK, NEW YORK				
STOCK SIZE				
POWER SUPPLY PANEL				
MATERIAL WEIGHT PER PC. SUB-ASSEMBLY VOX				
TYPE & TEMPER				
DRAWN				
HEAT TREAT. SPEC.				
CHECKED				
FINISH & SPEC. NO.				
A-590 F				

A-590 F