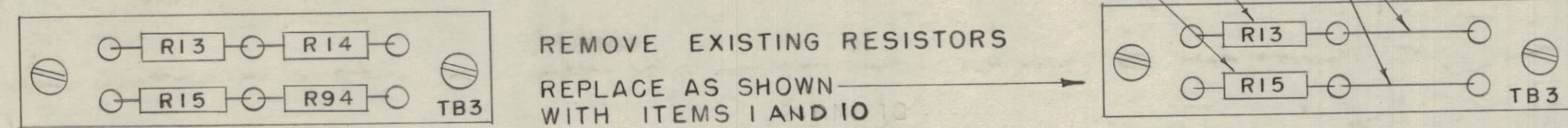


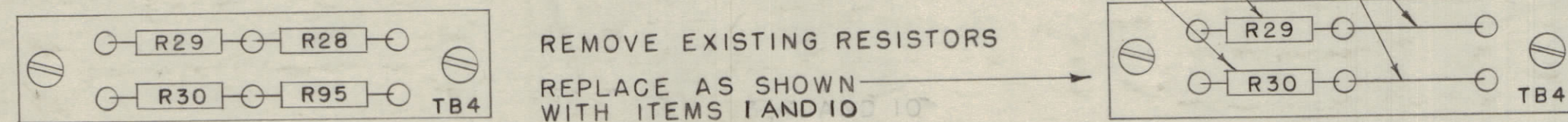
IF IT IS FOUND DESIRABLE TO CHANGE ANY TOLERANCE OR OTHER DETAIL SPECIFIED ON THIS DRAWING NOTIFY THE PURCHASER PROMPTLY.
 MAXIMUM ALLOWABLE TOLERANCES HAVE BEEN DETERMINED AND DEVIATIONS WILL BE CAUSE FOR REJECTION. REMOVE ALL BURRS AND SHARP EDGES

1- TB3 CONVERSION



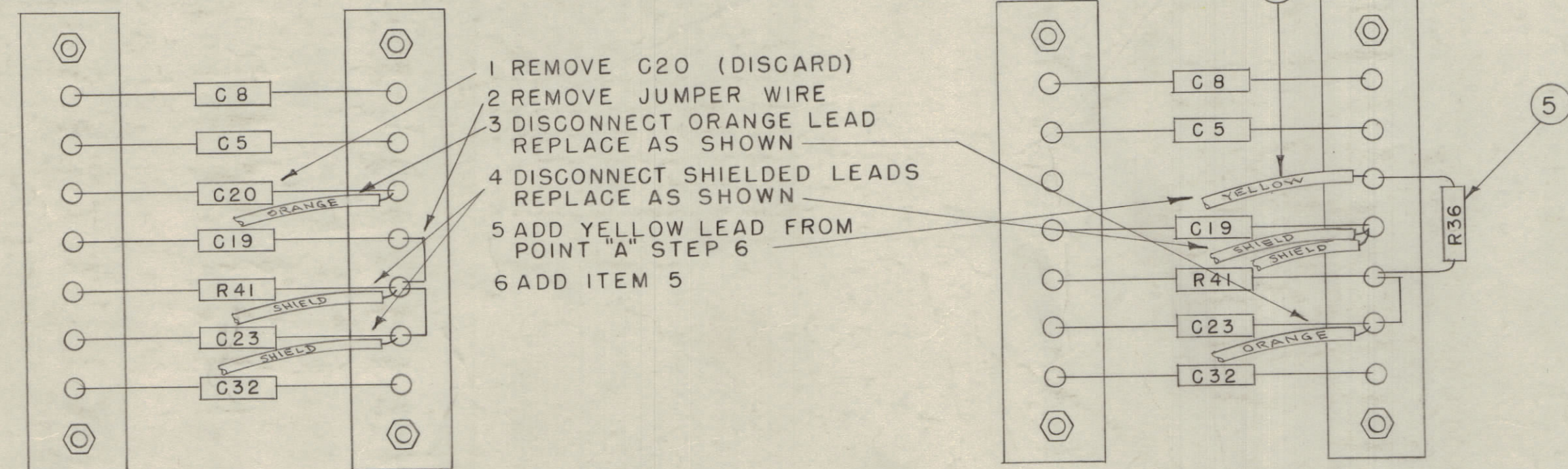
REMOVE EXISTING RESISTORS
 REPLACE AS SHOWN WITH ITEMS 1 AND 10

2- TB4 CONVERSION



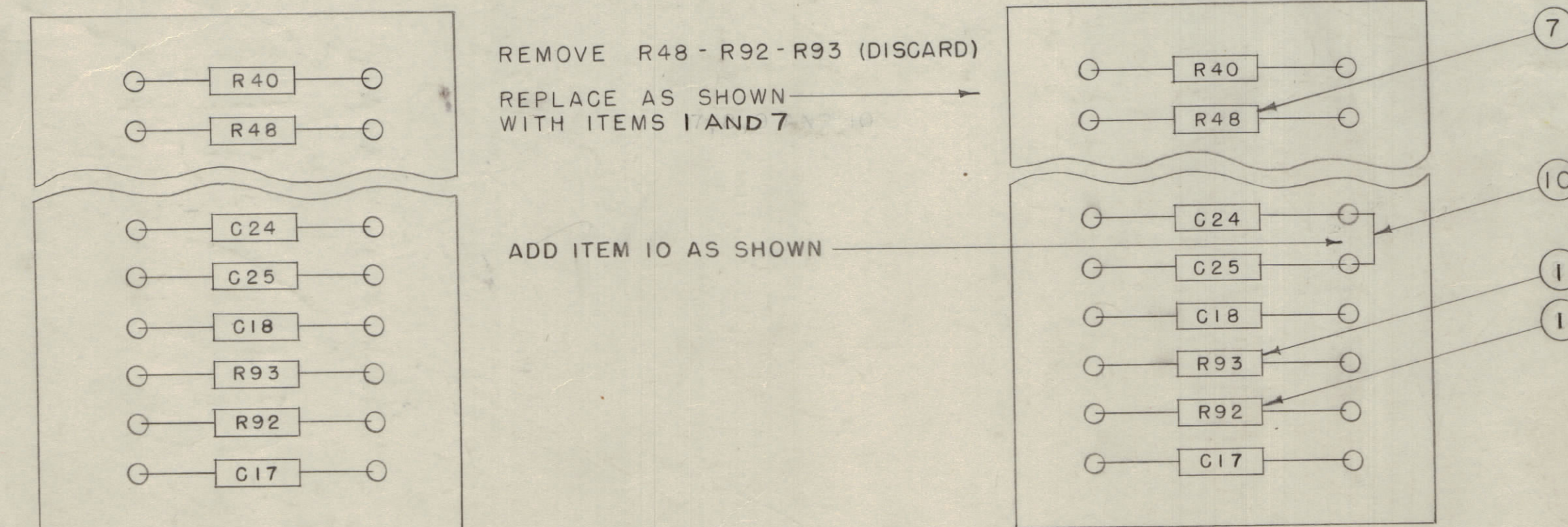
REMOVE EXISTING RESISTORS
 REPLACE AS SHOWN WITH ITEMS 1 AND 10

3- TB6 CONVERSION



1 REMOVE C20 (DISCARD)
 2 REMOVE JUMPER WIRE
 3 DISCONNECT ORANGE LEAD REPLACE AS SHOWN
 4 DISCONNECT SHIELDED LEADS REPLACE AS SHOWN
 5 ADD YELLOW LEAD FROM POINT "A" STEP 6
 6 ADD ITEM 5

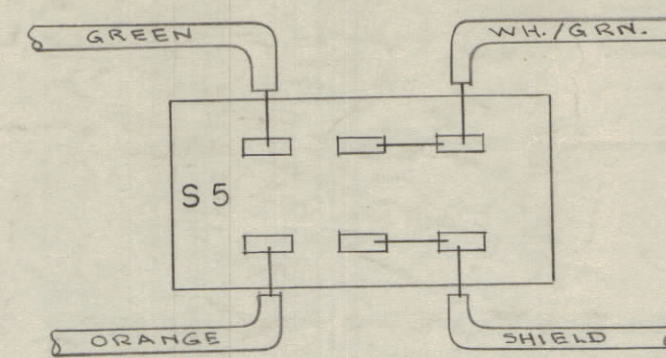
4- TB9 CONVERSION



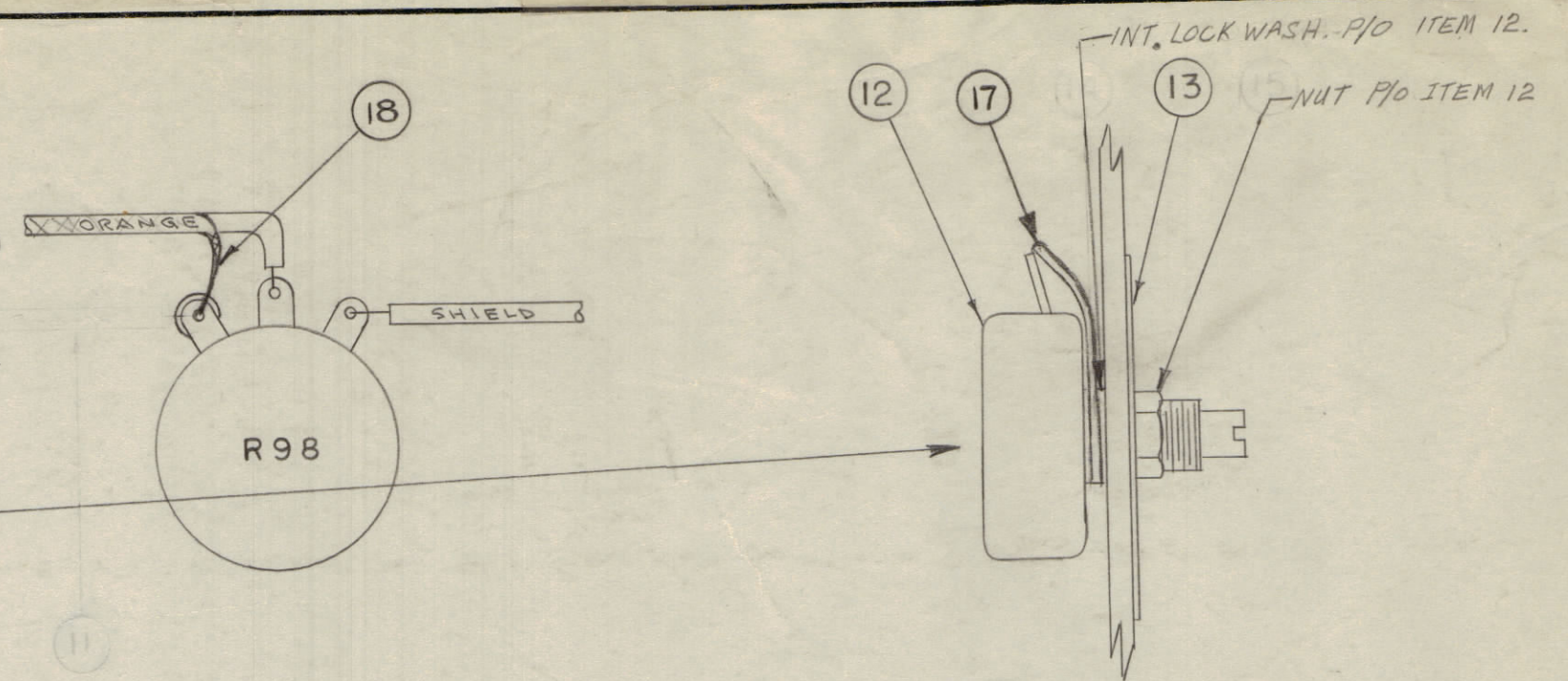
REMOVE R48 - R92 - R93 (DISCARD)
 REPLACE AS SHOWN WITH ITEMS 1 AND 7

ADD ITEM 10 AS SHOWN

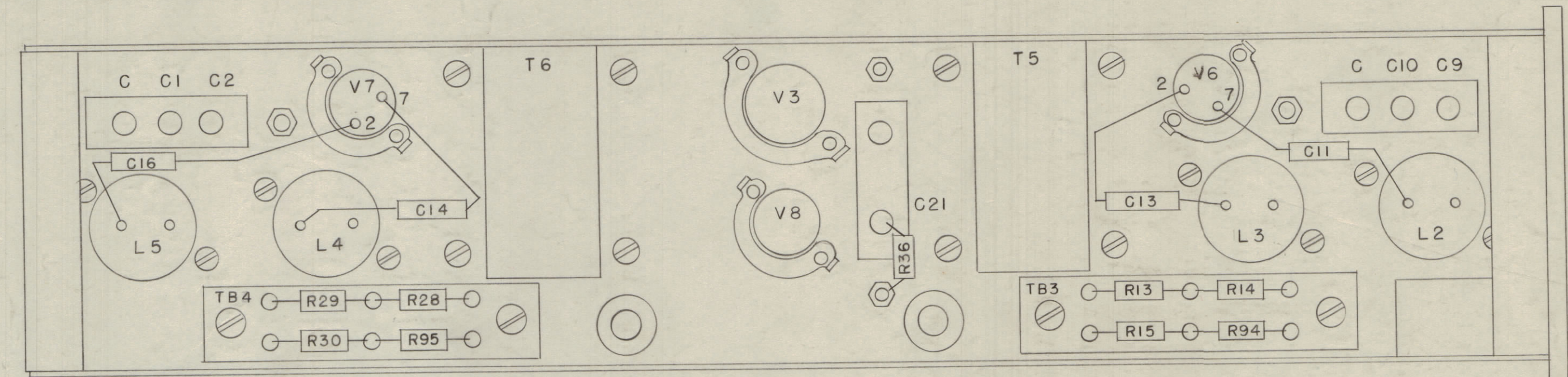
5- SWITCH S5 CONVERSION



- 1 REMOVE LEADS. DISCARD GREEN & WH/GRN (CUT OFF & INSULATE ENDS)
- 2 REMOVE AND DISCARD S5
- 3 ADD ITEM 12 (R98) WIRE AS SHOWN
- 4 DELETED
- 5 USING HOLE (S5) MOUNT ITEMS 12,13,14,15,17 AS SHOWN (SEE NOTE 4)

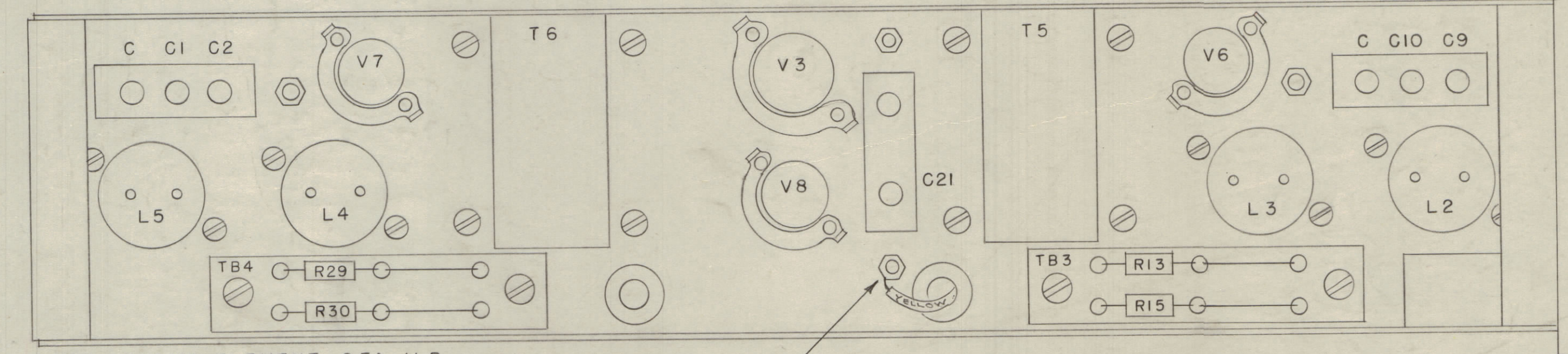


6- LEFT CHASSIS ELEMENT CONVERSION



LEFT CHASSIS ELEMENT CFA-1

- 1 REMOVE C11-C13-C14-C16 & R36
- 2 CONVERSION SHOWN BELOW
- 3 SEE S-182 AND CM-107 FOR REPLACEMENT OF ABOVE CAPACITORS (REPLACEMENT TO BE MADE IN TEST DEPT.)



LEFT CHASSIS ELEMENT CFA-1LB

- NOTE -
- 1- TB3 AND TB4 LOCATED ON LEFT CHASSIS ELEMENT.
 - 2- TB6 AND TB9 LOCATED ON BOTTOM OF MAIN CHASSIS.
 - 3- S5 LOCATED ON REAR PANEL.
 - 4- ITEM 13 (NP-132) SUPPLIED FOR FIELD CONVERSIONS ONLY. (FOR PLANT CONVERSION - REMOVE EXISTING LETTERING. RESTAMP AS PER NP-132)

NOTICE TO PERSONS RECEIVING THIS DRAWING

THE TECHNICAL MATERIEL CORPORATION claims proprietary right in the material disclosed hereon. This drawing is issued in confidence for engineering information only and may not be re-produced or used to manufacture anything shown hereon without permission from THE TECHNICAL MATERIEL CORPORATION to the user. This drawing is loaned for mutual assistance and is subject to recall at any time.

Property of:
 THE TECHNICAL MATERIEL CORPORATION
 MAMARONECK, NEW YORK

REQ. ITEM	PART NO.	DESCRIPTION	SYMBOL
X 18	MWC22(7)5J3	CABLE, SHIELDED, JACKETED	
1 17	TE111-2	LUG, GROUNDING	
X 16	BS-100	SOLDER, SOFT (ALL CONNECTIONS)	
15	DELETED		
14	DELETED		
1 13	NP-132	REAR PANEL PLATE	
1 12	RV4MAYSA225AYY	RESISTOR, VAR.	R98
11	DELETED		
X 10	NL-100-8	WIRE, BUSS BAR 2AGA.	
9			
8			
1 7	RC206F225K	RESISTOR, FIXED	R48
X 6	MWC22(7)U4	CABLE, INSULATED (YEL.)	
1 5	RC206F474K	RESISTOR, FIXED	R36
4			
3			
2			
6 1	RC32GF474J	RESISTOR, FIXED	

ISSUE	ITEM	CHANGED FROM	DATE	CN. NO.	DRAFTS	CHECKER	ENG. APP.
C		IT 14, 15 DELETED MADE 1/10 IT 12	2/1/65	14371			
B	3	R98 PICT. UPDAT. NOTE 4 DELE					
B	2	IT 17 & 18 ADD. PINS UPDATED	11/30/64	12868	LSB		
B	1	IT 11 SRIR 3/5(7)22000 DELE					
A	2	ITEM 1 WAS 275K	3/4/54	1	CDP		
A	1	REDRAWN					

CFA-1LB	219	10-30-53
MODEL	PROJECT NO.	DATE
	ASSY. NO.	

REVISION	DESCRIPTION
R13	
R15	
R29	
R30	
R92	
R93	

A-580 C