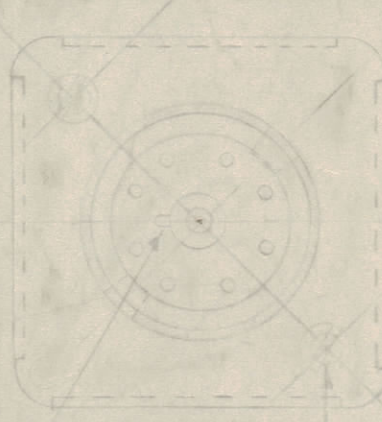


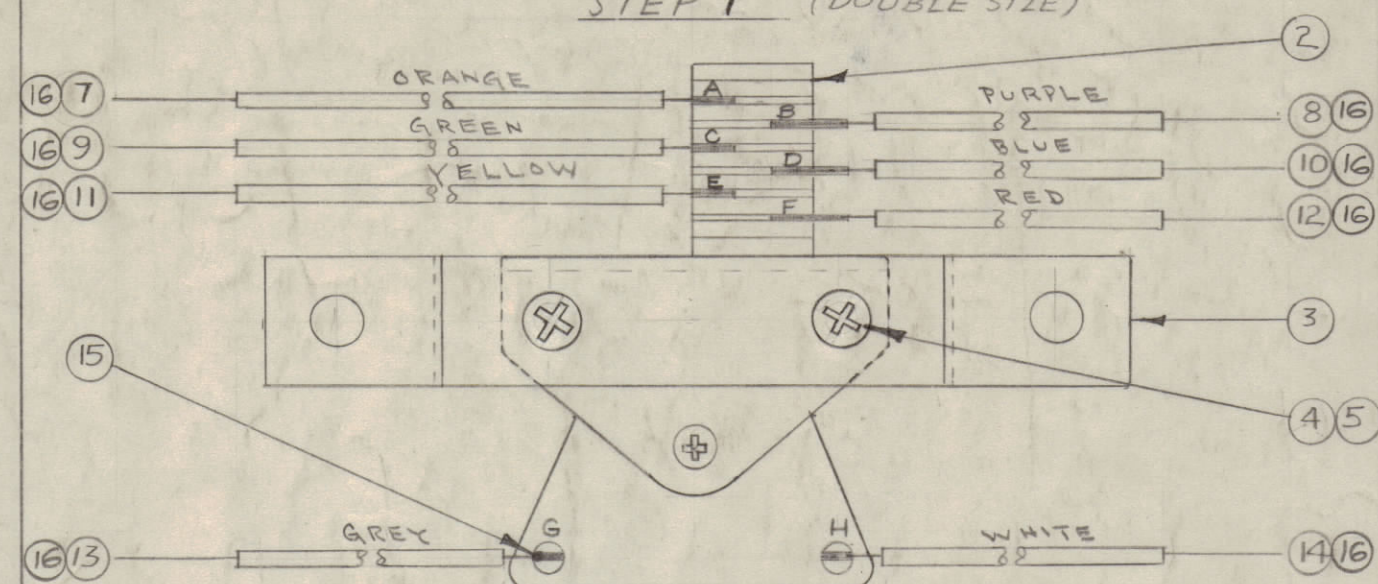
IF IT IS FOUND DESIRABLE TO CHANGE ANY TOLERANCE OR OTHER DETAIL SPECIFIED ON THIS DRAWING NOTIFY THE PURCHASER PROMPTLY.
 MAXIMUM ALLOWABLE TOLERANCES HAVE BEEN DETERMINED AND DEVIATIONS WILL BE CAUSE FOR REJECTION.
 REMOVE ALL BURRS AND SHARP EDGES

STEP 1

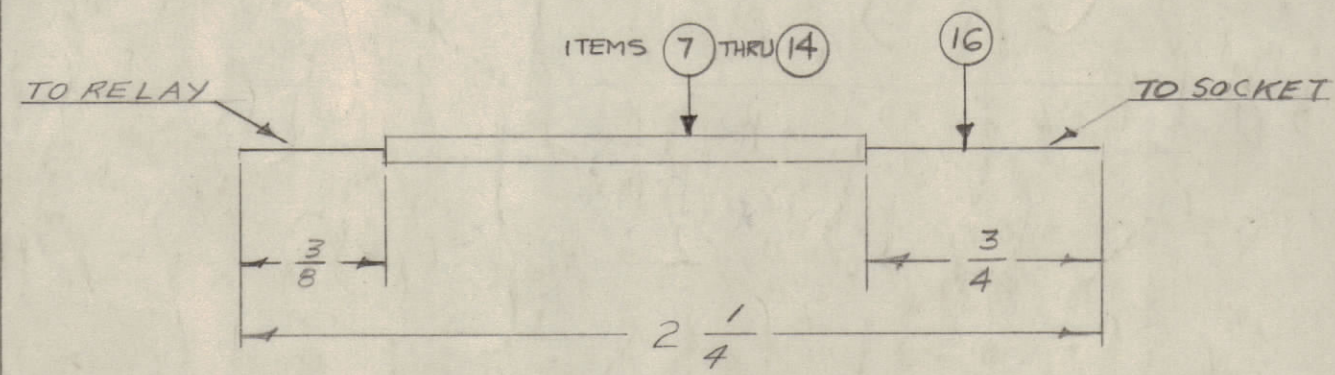
NOTE: PLACE WIRE BASE RX SH3-N AS SHOWN.



STEP 1 (DOUBLE SIZE)

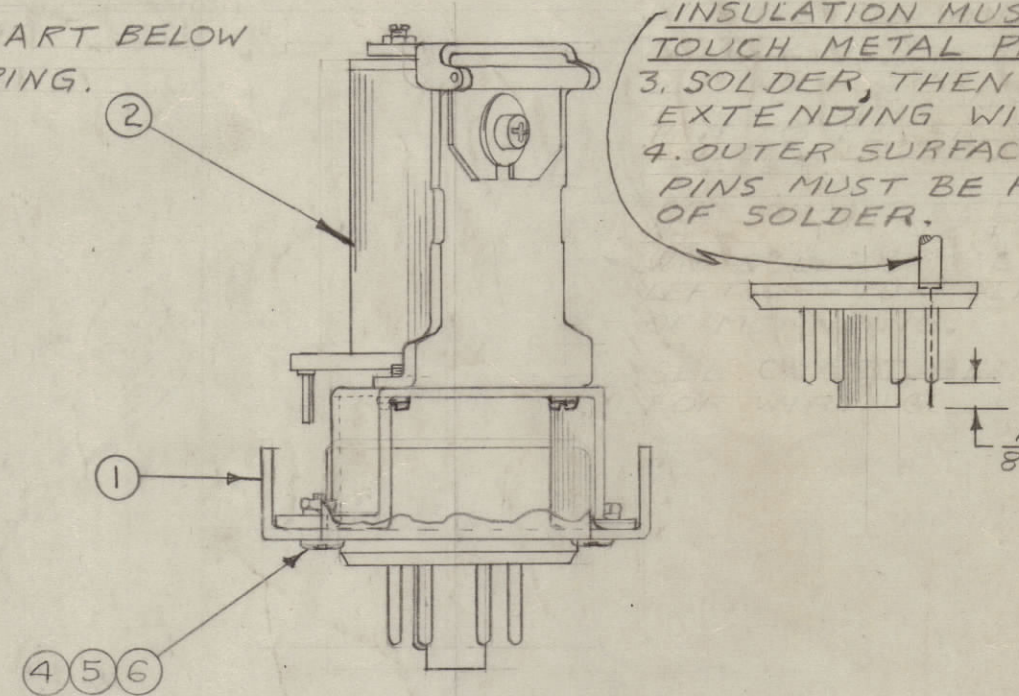


1. MOUNT BRACKET (ITEM 3) TO RELAY (ITEM 2).
2. SOLDER WIRES TO CONTACTS.



NOTE:
 WIRING & CONTACTS LEFT OFF DIAGRAM FOR CLARITY OF MOUNTING.
 SEE CHART BELOW FOR WIRING.

STEP 2



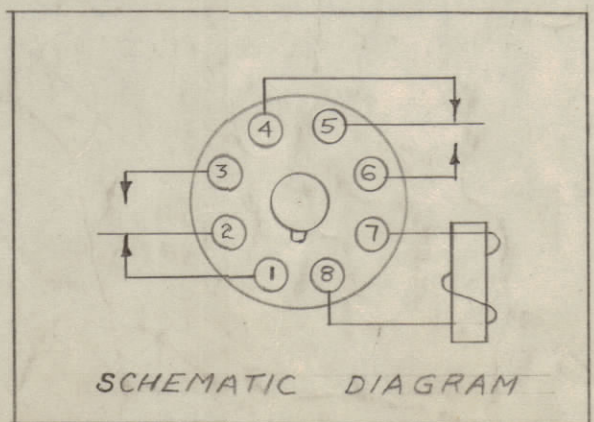
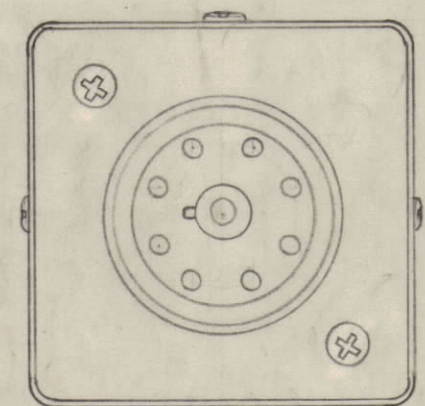
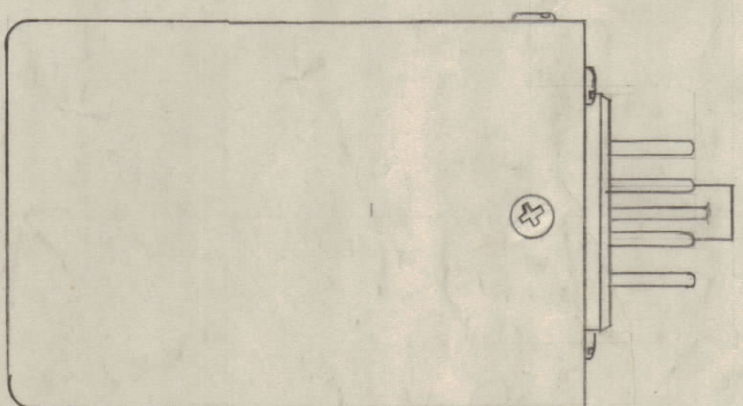
1. SECURE RELAY ASSY. TO BASE.
2. INSERT WIRE AS SHOWN BELOW.
3. SOLDER, THEN CUT. EXTENDING WIRE.
4. OUTER SURFACE OF PINS MUST BE FREE OF SOLDER.

WIRING CHART			
ITEM	FROM RELAY	TO SOCKET	COLOR OF WIRE
7	PIN-A	PIN-6	OR.
8	PIN-B	PIN-5	PURPLE
9	PIN-C	PIN-4	GREEN
10	PIN-D	PIN-3	BLUE
11	PIN-E	PIN-2	YEL.
12	PIN-F	PIN-1	RED
13	PIN-G	PIN-8	GREY
14	PIN-H	PIN-7	WHITE

A-543 H

STEP 3

STAMP TMC PART NO. AS SHOWN WITH 1/8 LETTERS & NUMERALS- BLACK, GOTHIC. COAT WITH LACQUER.



REQ.	ITEM	PART NO.	DESCRIPTION	SYMBOL
X	16	WL-100-7	WIRE, BUSS BAR #24	
X	15	B5-100	SOLDER, SOFT	
1/8"	14	PX-104-1-.034	INSULATION, SLEEVING	BLK
1/8"	13	-7-		GRAY
1/8"	12	-3-		RED
1/8"	11	-2-		YEL.
1/8"	10	-6-		BLUE
1/8"	9	-4-		GRN.
1/8"	8	-9-		VIO
1/8"	7	PX-104-8-.034	INSULATION, SLEEVING	ORN
2	6	NTH0632BN8	NUT, HEX.	
4	5	LWS06MRN	LOCKWASHER, SPLIT	
4	4	SCBP0632BN4	SCREW, MACH.	
1	3	MS-399	RELAY BRACKET	
1	2	RL-105	RELAY	
1	1	TS-128	PLUG-IN SOCKET	

ISSUE	ITEM	CHANGED FROM	DATE	CN. NO.	DRAFTS	CHECKER	ENG. APP.
H	5	STEPS RENUMBERED	5-8				
	4	STEP (1) DELETED	7				
	3	ITEM (6) WAS NTH0632BC8	14-7				
	2	ITEM (5) WAS LWS06MRC	4				
	1	ITEM (4) WAS SCBP0632BC4	63				
G	2	ITEM 16 ADDED	11/5/57	7	15	P.L.K.	A.J.J.
F	1	NOTE CHGD. in Step One	12/18/56	6	16		
E	1	ITEM 6 WAS NTH0632BC10	8/2/56	5			
D	2	ITEM 1 WAS PO-106-NT	9/11/55	4			
C	1	ROTATION OF SPRING CLIP DELETED	4/22/53	3			
B	1	FINISH WAS 3-115	12/1/54	2			
A	1	ITEM 1 WAS PO-106-NT	10/15/54	1			

REQ.	ITEM	PART NO.	DESCRIPTION	SYMBOL
THE TECHNICAL MATERIEL CORP. MAMARONECK, NEW YORK				
STOCK SIZE				
MATERIAL WEIGHT PER PC.				
TYPE & TEMPER				
HEAT TREAT. SPEC.				
FINISH & SPEC. NO.				

16 9-25-53 A.J.J. WSC
 DRAWN ELEC. DES. APP. MECH. DES. APP.
 CHECKED FINAL APPROVAL
 SUPERCEDES RSD-1 A-543 H

MODEL	PROJECT NO.	ASSY. NO.	DATE
RSD-2(A,B,C,D,E)	170		9-25-53
USED ON			