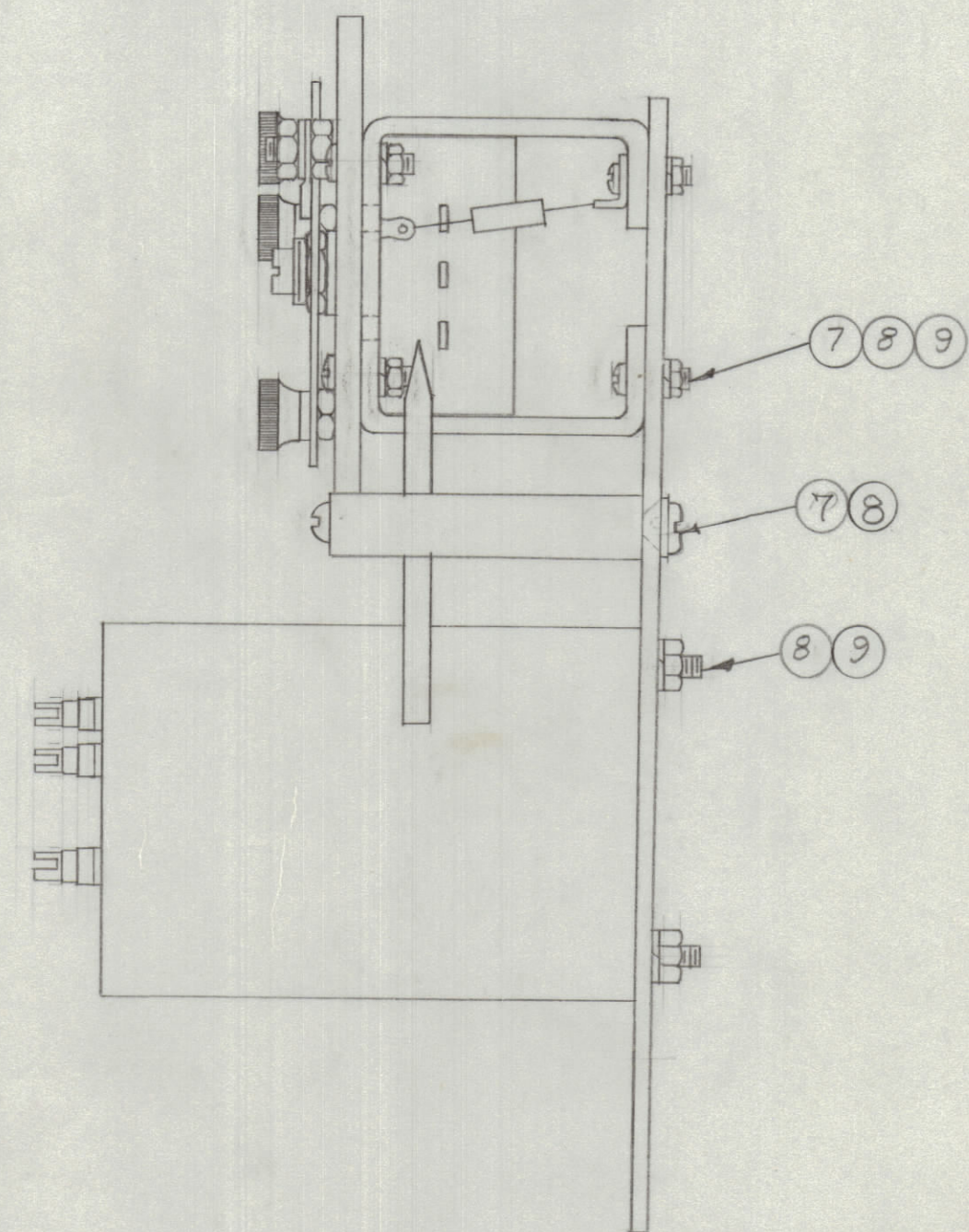
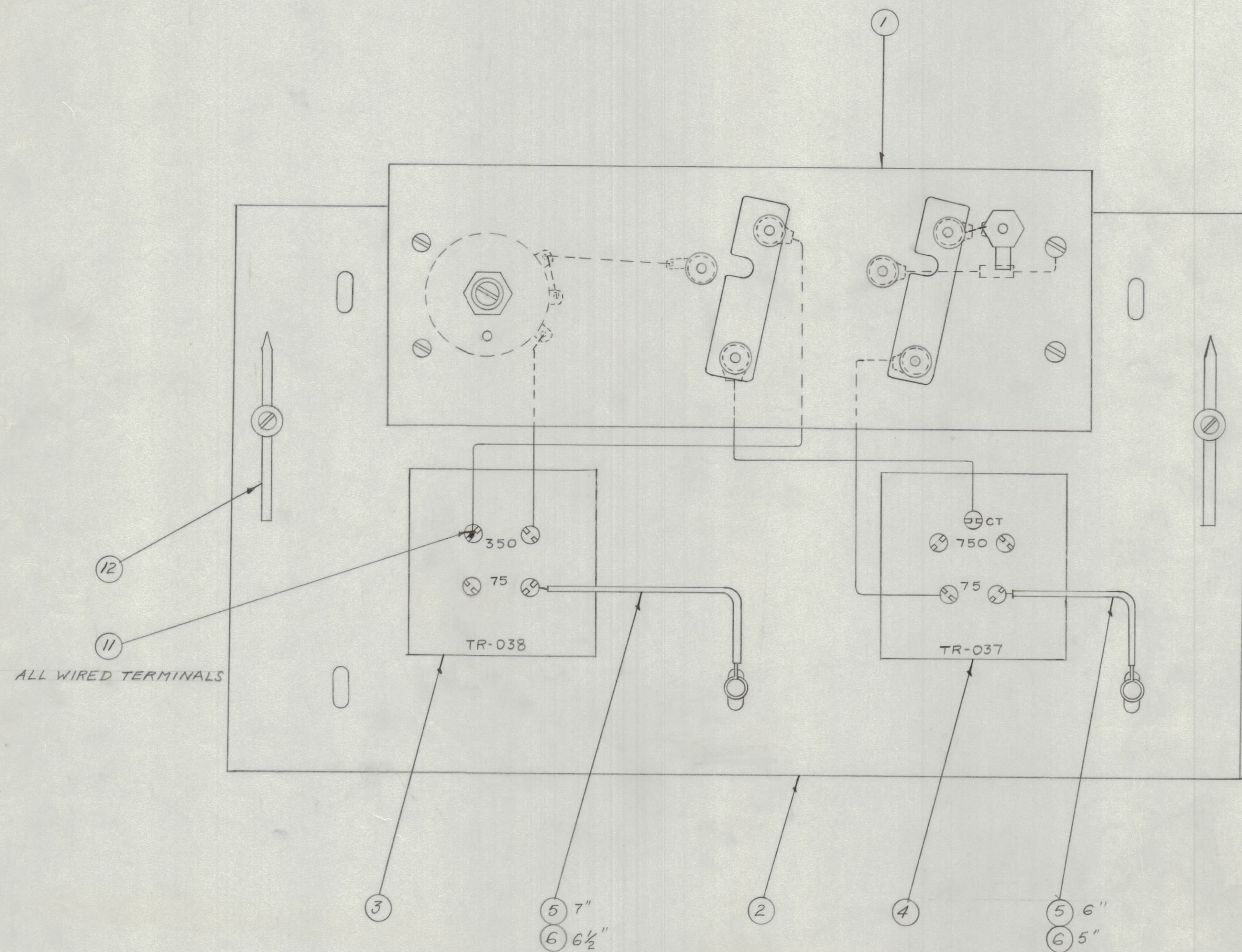


IF IT IS FOUND DESIRABLE TO CHANGE ANY TOLERANCE OR OTHER DETAIL SPECIFIED ON THIS DRAWING NOTIFY THE PURCHASER PROMPTLY.

MAXIMUM ALLOWABLE TOLERANCES HAVE BEEN DETERMINED AND DEVIATIONS WILL BE CAUSE FOR REJECTION. REMOVE ALL BURRS AND SHARP EDGES.



NOTICE TO PERSONS RECEIVING THIS DRAWING

THE TECHNICAL MATERIEL CORPORATION claims proprietary right in the material disclosed hereon. This drawing is issued in confidence for engineering information only and may not be reproduced or used to manufacture anything shown hereon without permission from THE TECHNICAL MATERIEL CORPORATION to the user. This drawing is loaned for mutual assistance and is subject to recall at any time.

Property of:
THE TECHNICAL MATERIEL CORPORATION
 MAMARONECK, NEW YORK

REQ. ITEM	PART NO.	DESCRIPTION	SYMBOL
2	A-170	LIGHTNING ARRESTER ASS'Y.	
X	11	BS-100	SOLDER, SOFT.
	10	BS-100	DELETED CH.
12	9	NTH0632BC8	NUT, HEX.
14	8	LWS06MRC	LOCKWASHER, SPLIT
6	7	SCBS0632BC5	SCREW, MACH.
11 1/2	6	PX-104-1-.066	SLEEVING
13	5	WL-100-4	WIRE
1	4	TR-037	TRANSFORMER, R.F.
1	3	TR-038	TRANSFORMER, R.F.
1	2	MS-113	MOUNTING PLATE
1	1	A-192	TERM. BD. ASS'Y.

THE TECHNICAL MATERIEL CORP.			
MAMARONECK, NEW YORK			
STOCK SIZE		TRANSFORMER & TERM. BD.	
MATERIAL		SUB-ASS'Y.	
TYPE & TEMPER	6 9/16/53	APP	WDR
HEAT TREAT. SPEC.	DRAWN	ELEC. DES. APP.	MECH. DES. APP.
FINISH & SPEC. NO.	CHECKED	FINAL APPROVAL	
		A-528 A	

BAC-2-S-1.5	230	A-526	9-16-53
MODEL	PROJECT NO.	ASSY. NO.	DATE
USED ON			

ISSUE ITEM	CHANGED FROM	DATE	CH. NO.	DRAFTS	CHECKER	ENG. APP.
A	1					

ITEM 10 DELETED

TOLERANCES: DEC. DIM. ±, FRACTIONAL DIM. ±, ANGULAR DIM. ±

SCALE: DRILL, PUNCH, COMMERCIAL STOCK SIZES AND MANUFACTURERS TOLERANCES ARE NOT INCLUDED.

A-528 A