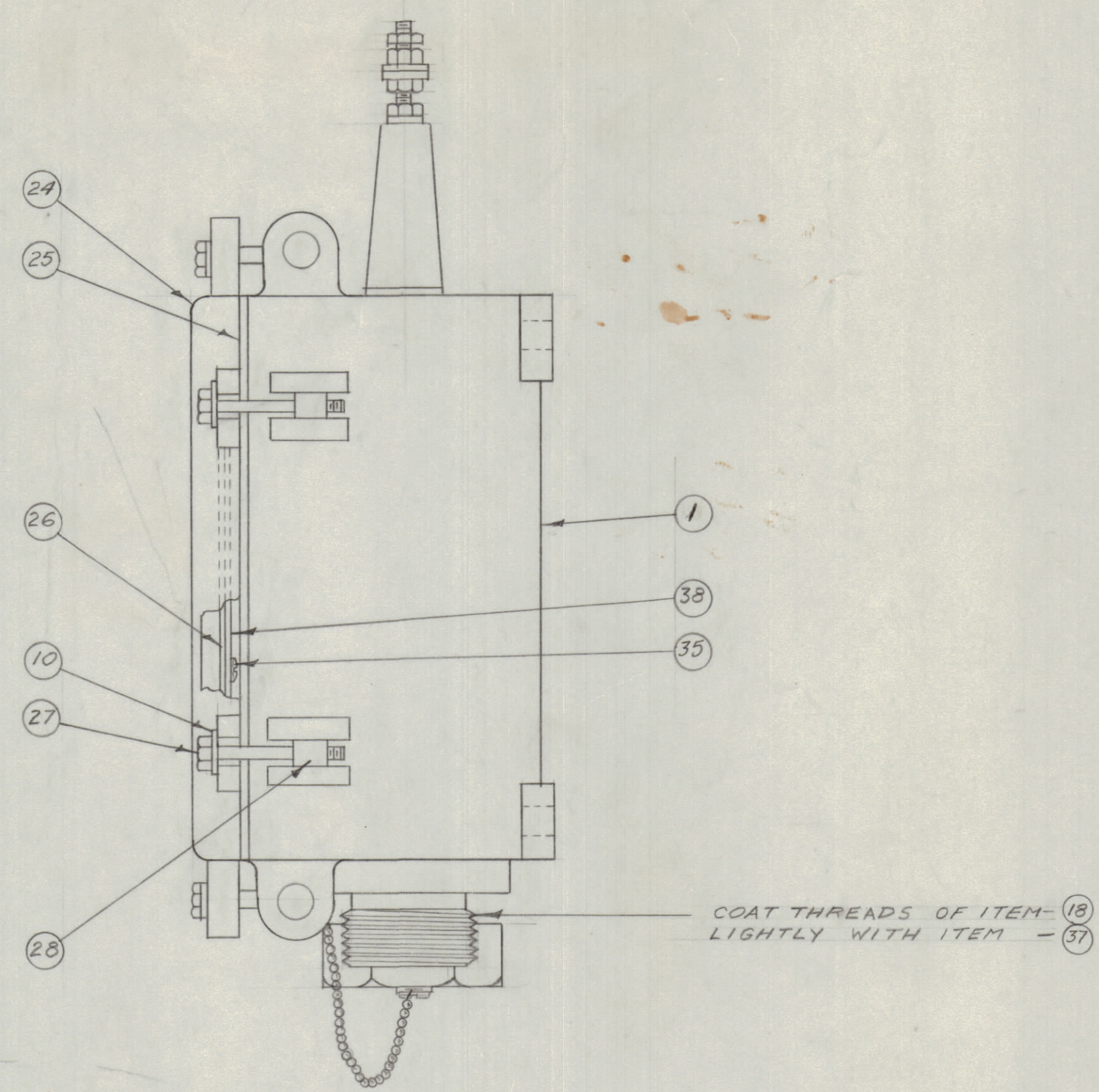
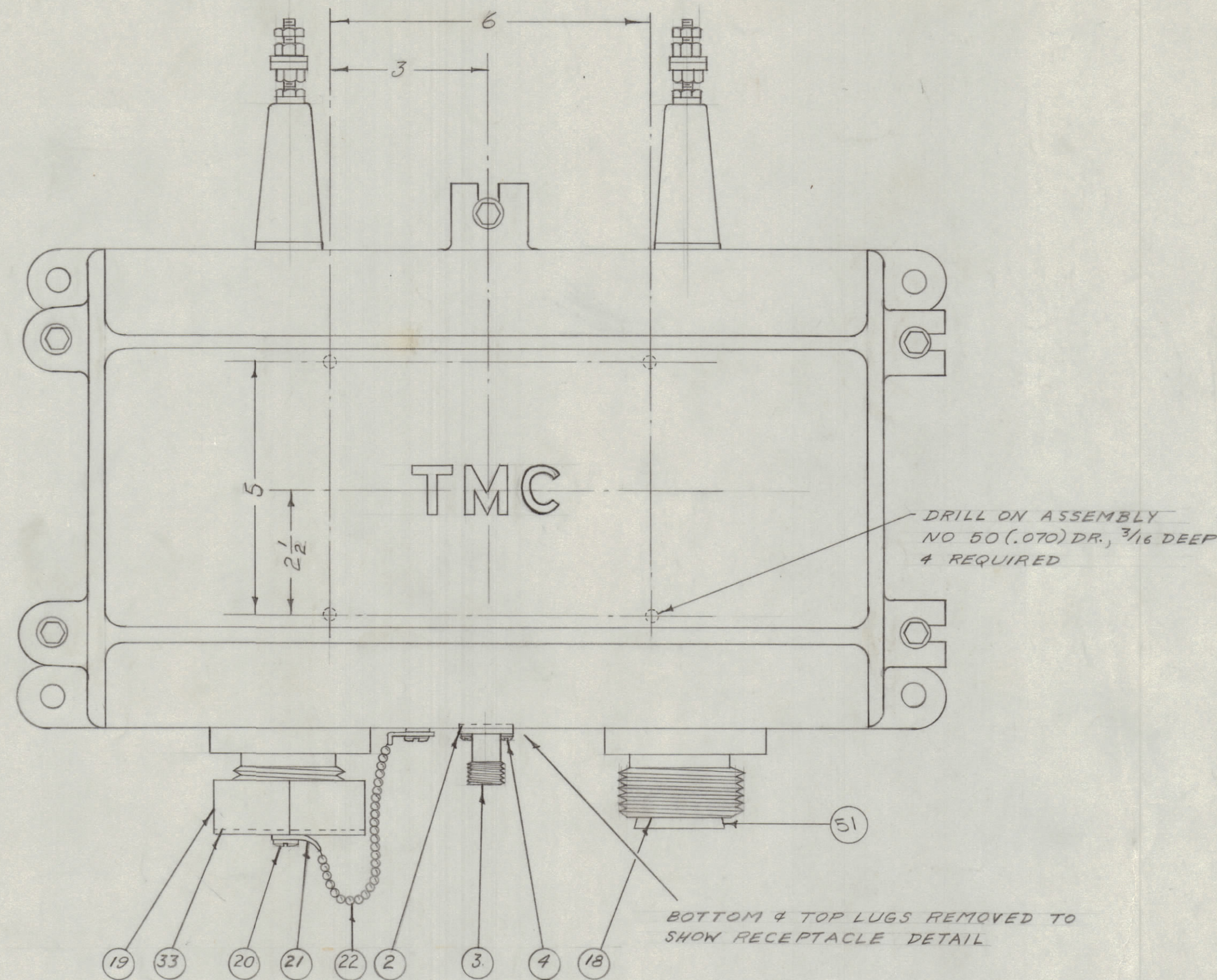


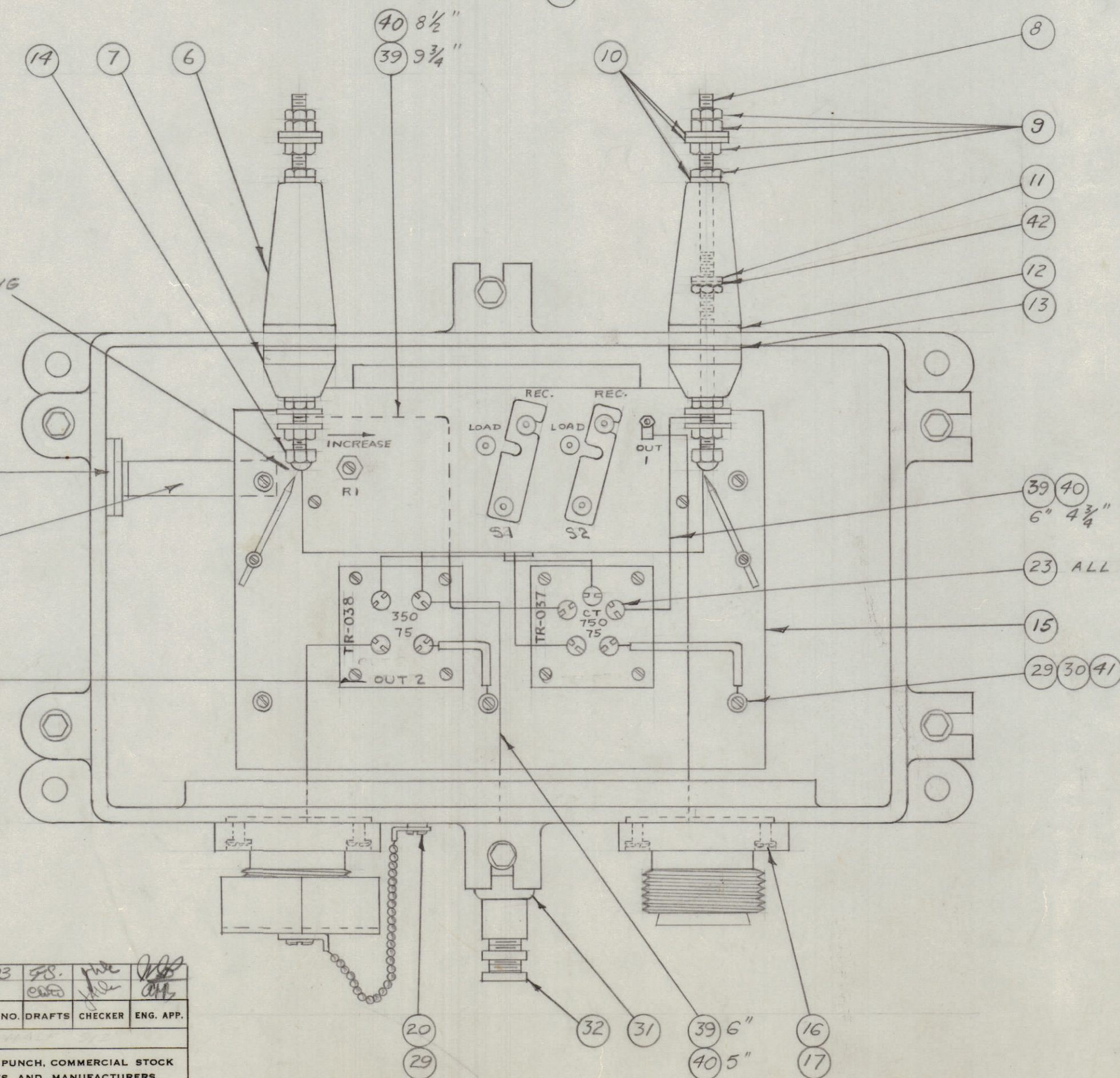
IF IT IS FOUND DESIRABLE TO CHANGE ANY TOLERANCE OR OTHER DETAIL SPECIFIED ON THIS DRAWING NOTIFY THE PURCHASER PROMPTLY.
 MAXIMUM ALLOWABLE TOLERANCES HAVE BEEN DETERMINED AND DEVIATIONS WILL BE CAUSE FOR REJECTION. REMOVE ALL BURRS AND SHARP EDGES

CEMENT ITEM 25 TO ITEM 24 WITH ITEM 36

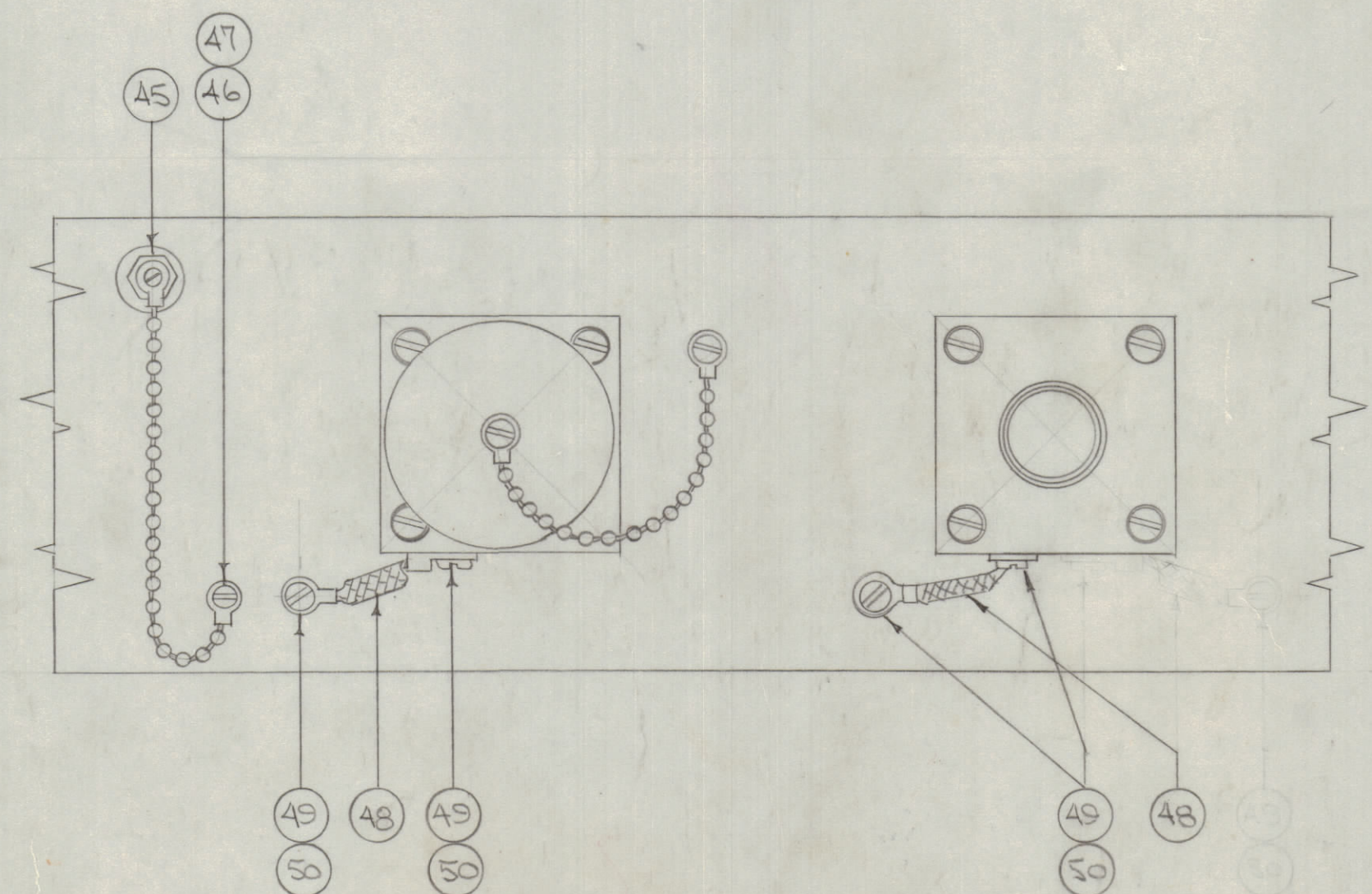


| | | | |
|--------|----|--------------|-----------------------|
| 1 | 51 | RY-114-Y7116 | STOPPER |
| 4 | 50 | LWE10MRC | WASHER, LOCK |
| 4 | 49 | SCBS10328C6 | SCREW, MACHINE |
| 1 | 48 | A-1148 | GROUND STRAP ASSY. |
| 1 | 47 | SCBS08328C3 | SCREW, MACHINE |
| 1 | 46 | LWE06HRC | WASHER, LOCK |
| 1 | 45 | A-1291 | DRAIN PLUG ASSY. |
| 1 | 44 | MS-933 | HOLDER, DESSICANT |
| 2 | 43 | AD-101-1/3 | DESSICANT |
| 2 | 42 | FW25LBC | WASHER, FLAT |
| 2 | 41 | FW08MBC | WASHER, FLAT |
| 18 3/4 | 40 | PX-104-1-066 | SLEEVING |
| 2 1/4 | 39 | WL-100-3 | WIRE |
| 1 | 38 | PX-117 | GUARD |
| X | 37 | LU-102 | ANTI-SIEZE COMPOUND |
| X | 36 | GL-101-2 | CEMENT, PLIOBOND |
| 4 | 35 | SC-102-1 | SCREW, THREAD CUTTING |
| 2 | 34 | GA-102 | GASKET |
| 1 | 33 | GA-105 | GASKET |
| 1 | 32 | MX-564/U | CLAMP, ARMOR |

A-526 B



ITEMS 31 AND 32 SUPPLIED AS LOOSE ITEMS.



| | | | |
|----|----|--------------|---------------------------|
| 1 | 31 | UG-21 B/U | PLUG |
| 5 | 30 | SCBS08328C6 | SCREW, MACHINE |
| 6 | 29 | LWE08MRC | WASHER, EXTERNAL |
| 6 | 28 | PM-100 | PIN, COVER BOLT |
| 6 | 27 | SC-108-9 | BOLT, HEX. HEAD |
| 1 | 26 | LD-159 | SCHEMATIC DIAGRAM |
| 1 | 25 | GA-107 | GASKET, COVER |
| 1 | 24 | PM-114 | COVER |
| X | 23 | BS-100 | SOLDER, SOFT |
| 8 | 22 | CT-100-2 | BEAD CHAIN |
| 2 | 21 | MS-105-1-S | COUPLING, CHAIN |
| 2 | 20 | SCBS08328S4 | SCREW, MACH. |
| 1 | 19 | PM-108 | CAP, FLANGE |
| 2 | 18 | PM-107 | COUPLING, FLANGE |
| 8 | 17 | SCRS2520SS12 | SCREW, MACH. |
| 8 | 16 | LWS25MSS | LOCK WASHER, SPLIT |
| 1 | 15 | A-528 | TRANS. & TERM. BD. ASS'Y. |
| 2 | 14 | NTC2520BCL | NUT, CAP |
| 2 | 13 | GA-101 | GASKET |
| 2 | 12 | GA-100 | GASKET |
| 2 | 11 | GA-104 | GASKET |
| 18 | 10 | FW25MSS | WASHER, FLAT |
| 12 | 9 | NTH2520SS14 | NUT, HEX. |
| 2 | 8 | A-100 | STUD, SUB-ASS'Y. |
| 2 | 7 | MS-101 | INSULATOR, INSIDE |
| 2 | 6 | MS-100 | INSULATOR, OUTSIDE |
| 4 | 5 | LWS04MSC | LOCK WASHER, SPLIT |
| 4 | 4 | SCBS0490SS5 | SCREW, MACH. |
| 1 | 3 | UG-58 A/U | RECEPTACLE |
| 1 | 2 | GA-149-4 | GASKET |
| 1 | 1 | PM-110 | CASE |

NOTICE TO PERSONS RECEIVING THIS DRAWING

THE TECHNICAL MATERIEL CORPORATION claims proprietary right in the material disclosed herein. This drawing is issued in confidence for engineering information only and may not be reproduced or used to manufacture anything shown hereon without permission from THE TECHNICAL MATERIEL CORPORATION to the user. This drawing is loaned for mutual assistance and is subject to recall at any time.

Property of:
 THE TECHNICAL MATERIEL CORPORATION
 MAMARONECK, NEW YORK

| | | | | | | | |
|------------|-------------|------------------------|----------------|---|--------|---------|-----------|
| B | 1 | ITEM(2) WAS GA-111 | 7-2-62 | 1/193 | 58 | WJC | WJC |
| A | 1 | ITEMS 43 THRU 51 ADDED | 7/15/62 | 1 | 58 | WJC | WJC |
| ISSUE | ITEM | CHANGED FROM | DATE | CN. NO. | DRAFTS | CHECKER | ENG. APP. |
| TOLERANCES | | | | | | | |
| ALL OTHERS | DEC. DIM. ± | FRAC. DIM. ± | ANGULAR DIM. ± | DRILL, PUNCH, COMMERCIAL STOCK SIZES AND MANUFACTURERS TOLERANCES ARE NOT INCLUDED. | | | |

| | | | |
|-------------|-------------|-----------|---------|
| BAC-2-S-1.5 | 230 | | 9/15/53 |
| MODEL | PROJECT NO. | ASSY. NO. | DATE |
| USED ON | | | |

| | | | |
|--|----------|-----------------|-----------------|
| REQ. ITEM | PART NO. | DESCRIPTION | SYMBOL |
| THE TECHNICAL MATERIEL CORP. MAMARONECK, NEW YORK | | | |
| STOCK SIZE | | | |
| MATERIAL | | | |
| WEIGHT PER PC. | | | |
| TYPE & TEMPER | | | |
| HEAT TREAT. SPEC. | | | |
| FINISH & SPEC. NO. | | | |
| DRAWN | | ELEC. DES. APP. | MECH. DES. APP. |
| CHECKED | | FINAL APPROVAL | |
| | | A-526 B | |