

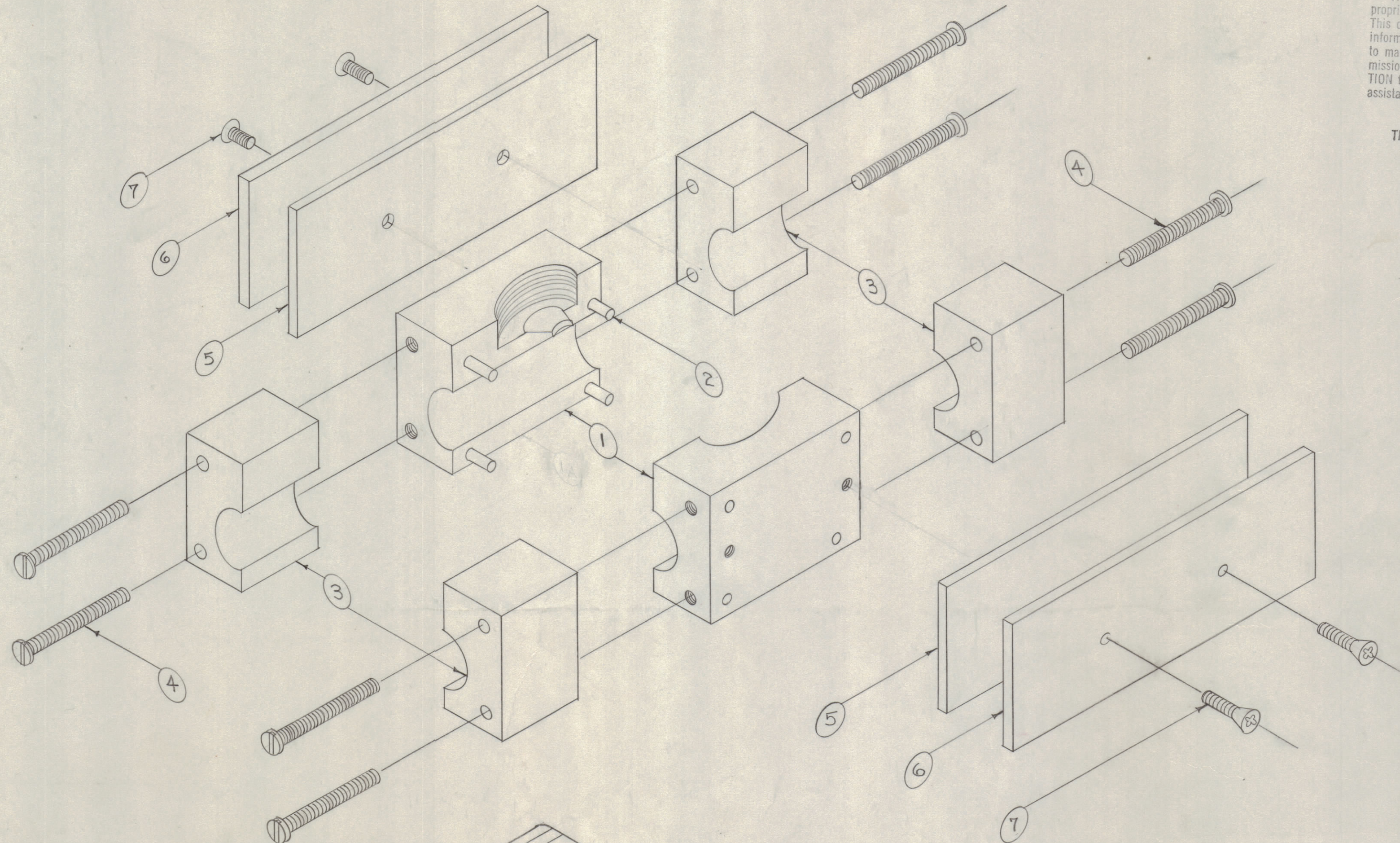
IF IT IS FOUND DESIRABLE TO CHANGE ANY TOLERANCE OR OTHER DETAIL SPECIFIED ON THIS DRAWING NOTIFY THE PURCHASER PROMPTLY.

MAXIMUM ALLOWABLE TOLERANCES HAVE BEEN DETERMINED AND DEVIATIONS WILL BE CAUSE FOR REJECTION. REMOVE ALL BURRS AND SHARP EDGES

NOTICE TO PERSONS RECEIVING THIS DRAWING

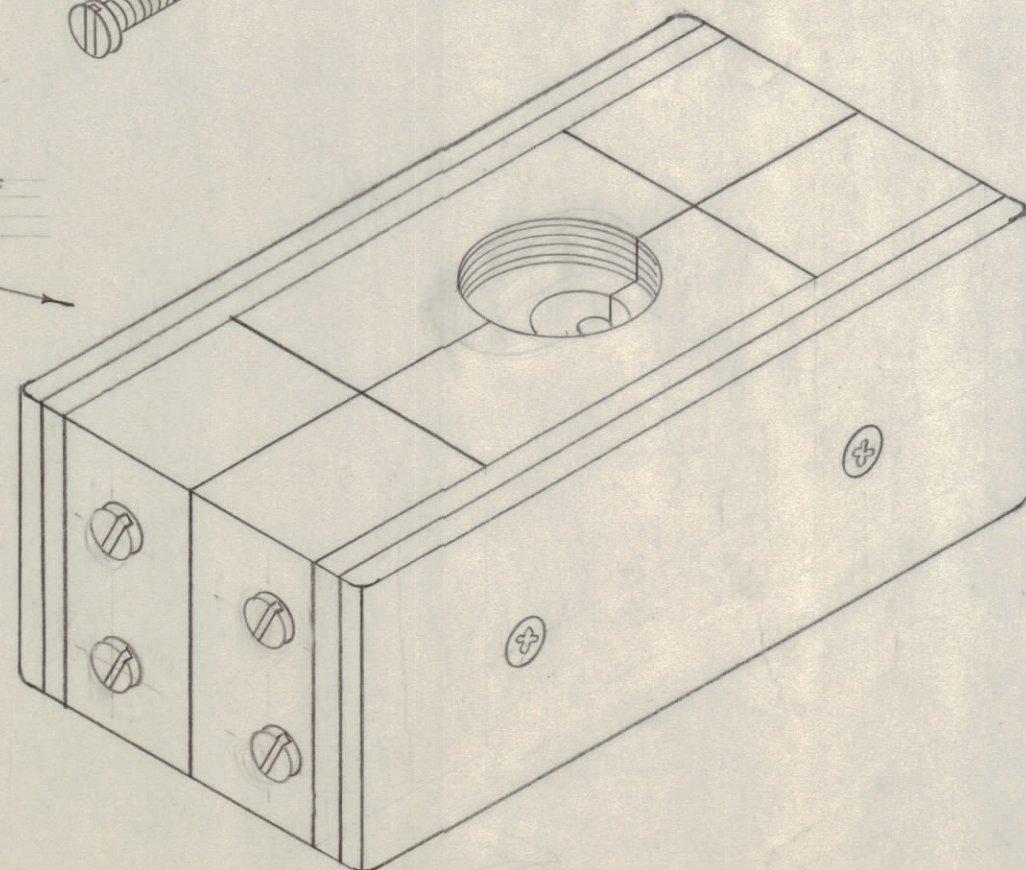
THE TECHNICAL MATERIEL CORPORATION claims proprietary right in the material disclosed hereon. This drawing is issued in confidence for engineering information only and may not be reproduced or used to manufacture anything shown hereon without permission from THE TECHNICAL MATERIEL CORPORATION to the user. This drawing is loaned for mutual assistance and is subject to recall at any time.

Property of:
THE TECHNICAL MATERIEL CORPORATION
MAMARONECK, NEW YORK



A-502

AFTER ASSEMBLY - ROUND OFF CORNERS & OUTSIDE EDGES



REQ.	ITEM	PART NO.	DESCRIPTION	SYMBOL
4	7	SCFP0632BC6	SCREW, MACHINE	
2	6	MS-524	SIDE PLATE, MOLD	
2	5	IM-138	SIDE INSULATION, MOLD	
8	4	SCRS0832BR18	SCREW, MACHINE	
4	3	IM-137	END INSULATION, MOLD	
4	2	PN-110	PIN, LOCKING	
-	1A		DELETE	
1	1	PM-292	CENTER SECTION, MOLD	

THE TECHNICAL MATERIEL CORP. MAMARONECK, NEW YORK			
STOCK SIZE			
DIELECTRIC MOLD			
ASSEMBLY			
MATERIAL		WEIGHT PER PC.	
TYPE & TEMPER		COD A-27-54	
HEAT TREAT. SPEC.		DRAWN	
FINISH & SPEC. NO.		ELEC. DES. APP.	
CHECKED		MECH. DES. APP.	
FINAL APPROVAL		A-502	

ISSUE	ITEM	CHANGED FROM	DATE	CN. NO.	DRAFTS	CHECKER	ENG. APP.
TOLERANCES							
SCALE:							
ALL OTHERS		DEC. DIM. ± FRAC. DIM. ± ANGULAR DIM. ±		DRILL, PUNCH, COMMERCIAL STOCK SIZES AND MANUFACTURERS TOLERANCES ARE NOT INCLUDED.			

REQ. PER UNIT	MODEL	PROJECT NO.	ASS'Y. NO.	DATE
1	KS-85-X	J-227		4-29-54
USED ON				