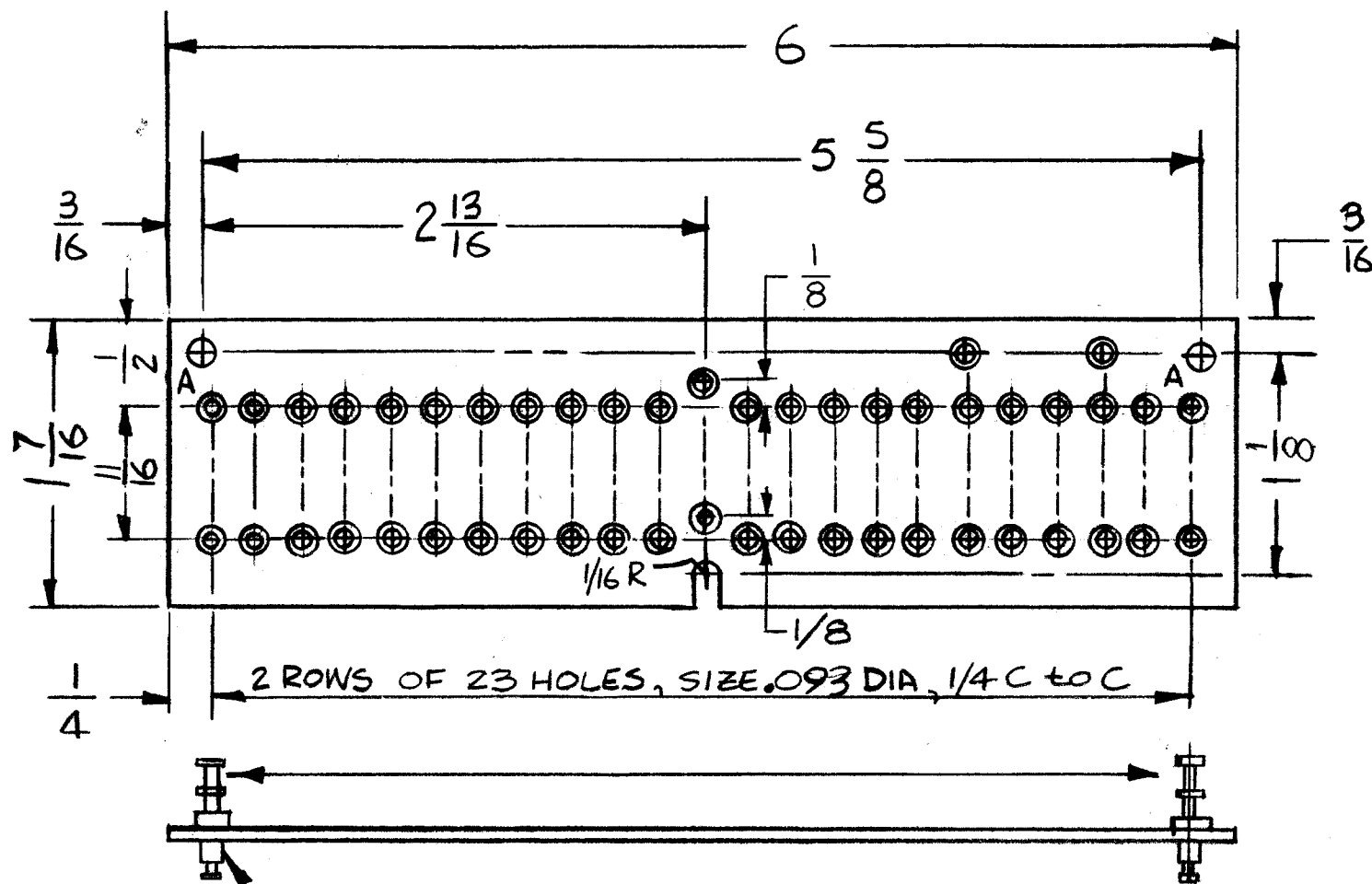


A4942-1

REQ  
 2 - 'A' Holes : 5/32. DIA,  
 48 - UNMARKED HOLES .093 DIA



① MOUNT AS SHOWN  
 48 REQ

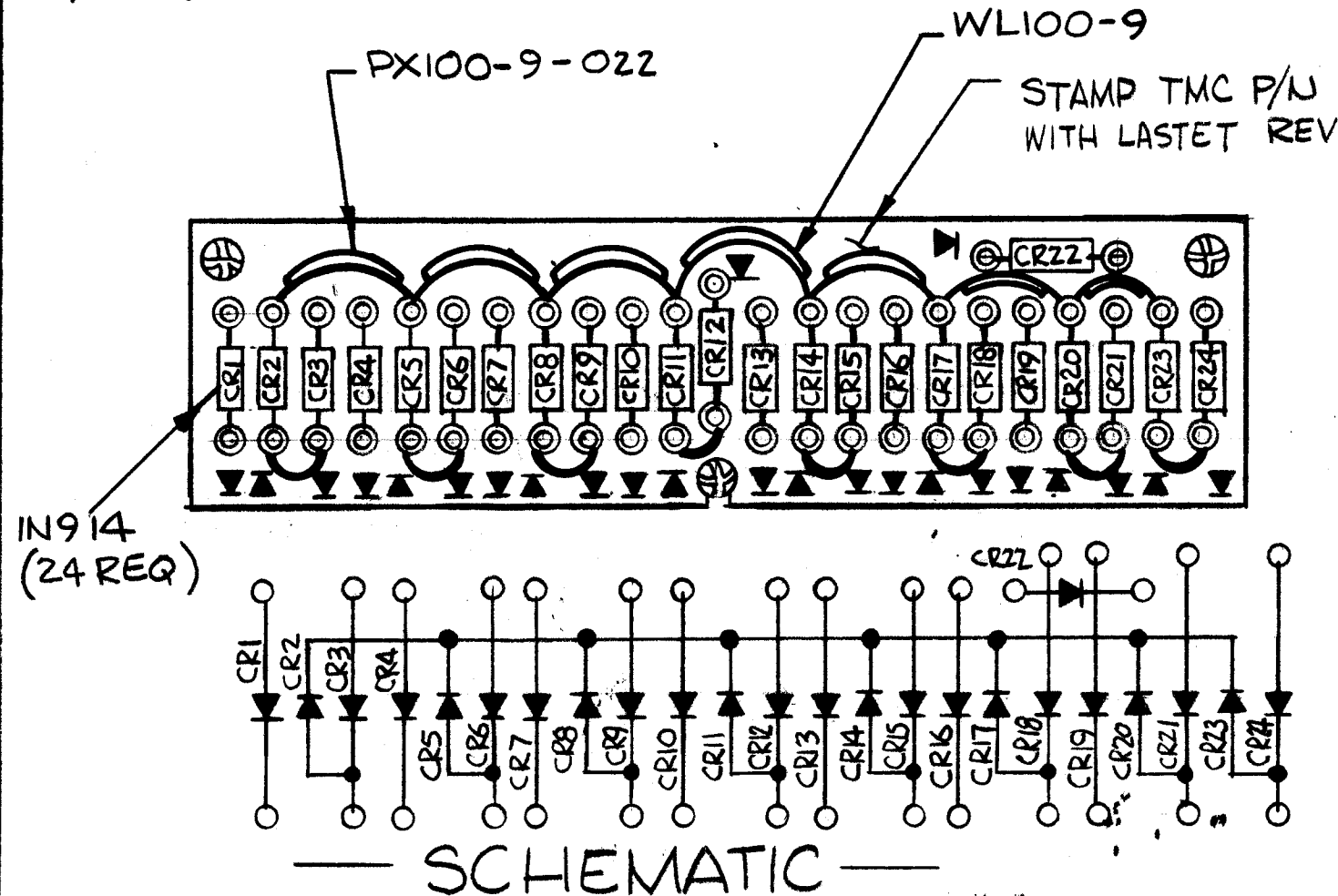
(MATERIAL: G10)  
 1/16 THK

1	TM125	
QTY / UNIT	MODEL USED ON	ASS'Y NO.
APPLICATION		
	CODE	

**NOTICE TO PERSONS RECEIVING THIS DRAWING**  
 THE TECHNICAL MATERIEL CORPORATION claims proprietary right in the material disclosed hereon. This drawing is issued in confidence for engineering information only and may not be reproduced or used to manufacture anything shown hereon without permission from THE TECHNICAL MATERIEL CORPORATION to the user. This drawing is loaned for mutual assistance and is subject to recall at any time.

REVISIONS							
E.M.N. NO.	DRAFT	CHKD	ZONE	LTR	DESCRIPTION	DATE	APPROVED
	<del>AK</del>			X1	1 7/16 WAS 1 9/32, SLOT WAS 'A' Hole, 1 3/16 WAS 1 1/4	1-12-73	
	AK			Ø	ORIGINAL RELEASE FOR PROD	3/20/73	

A4942-2



— SCHEMATIC —

48	1	TE127-8	TERMINAL, STUD	
REQ'D ITEM		PART NUMBER	DESCRIPTION	SYM.

LIST OF MATERIAL

UNLESS OTHERWISE SPECIFIED DIMENSIONS ARE IN INCHES AND INCLUDE CHEMICALLY APPLIED OR PLATED FINISHES		FINAL APPROVAL	DATE	THE TECHNICAL MATERIEL CORP. MAMARONECK, NEW YORK	
DECIMALS .X ± .05 .XX ± .01 .XXX ± .005		MECH. DES.	DATE		
FRACTIONS 1/64 ANGLES 0° - 30°		ELECT. DES.	DATE	ASSEMBLY, DIODES	
MATERIAL		CHECKED	DATE		
FINISH		DRAWN	DATE	SIZE	CODE IDENT. NO.
				B	82679
				DWG NO.	A4942
				ISSUE	Ø
				SCALE	SHEET OF