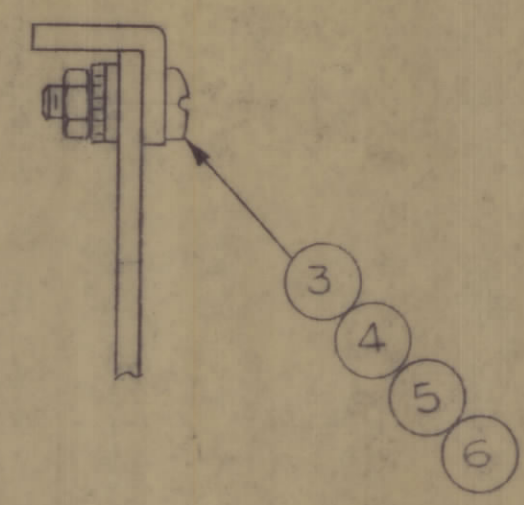
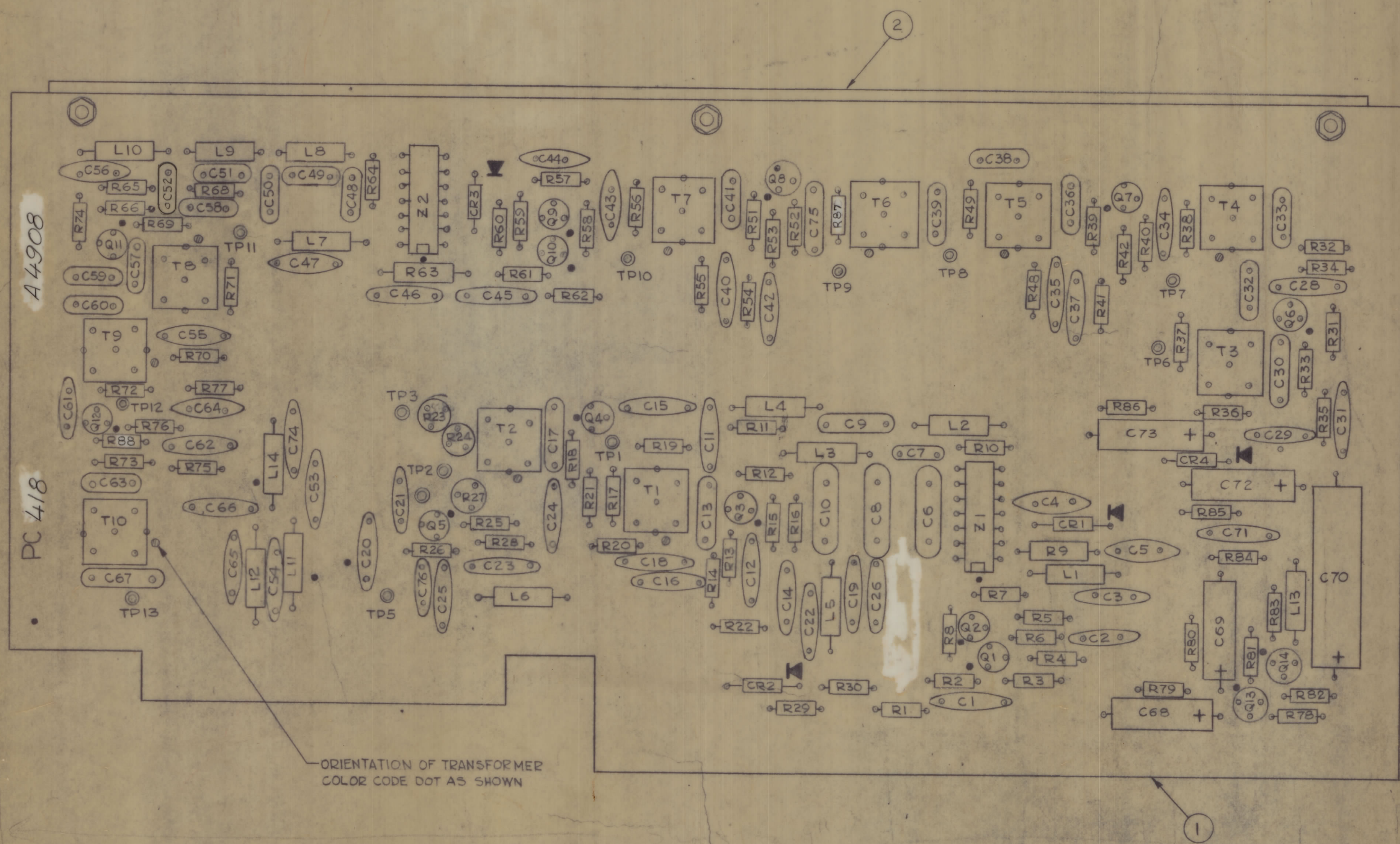


REVISIONS						
ZONE	LTR	DESCRIPTION	DATE	E.M. N/NO	DRAFT	CHKD
	0	ORIGINAL RELEASE FOR PRODUCTION	4/7/71		0	KK



- ASSEMBLY NOTES:**
- 1- TO MOUNT COMPONENTS, INSERT LEADS THROUGH PLATED THRU-HOLES.
 - 2- CAUTION WHEN APPLYING HEAT AND SOLDER TO LEAD AND FOIL
 - 3- CLEAN AND INSPECT AS PER SPEC. 9676.
 - 4- FOR ELECTRICAL COMPONENT PART NUMBERS REFER TO NPL A4908
 - 5- USE SYMBOL NUMBERS FOR ASSEMBLY REFERENCE.

ORIENTATION OF TRANSFORMER
COLOR CODE DOT AS SHOWN

SYMBOL SERIES 500.

QTY. REQ.	ITEM	PART NO.	DESCRIPTION	SYMBOL
3	6	NTH0440BNG	NUT, PLAIN HEXAGONAL	
3	5	LWE04MRN	WASHER, LOCK EXTERNAL	
3	4	FW04HBN	WASHER, FLAT	
3	3	SCBP0440BN4	SCREW, MACHINE	
1	2	MS6004	STIFFENER, PRINTED CIRCUIT BOARD	
1	1	PC 418	PRINTED CIRCUIT BOARD	

O. POSE		LIST OF MATERIAL	
FINAL APPROVAL	DATE	THE TECHNICAL MATERIEL CORP.	
MECH. DES.	DATE	MAMARONECK, NEW YORK	
ELECT. DES.	DATE	ASSY PRINTED CIRCUIT BD	
CHECKED	DATE	CARRIER GENERATOR	
DRAWN	DATE	SIZE	CODE IDENT. NO. DWG. NO.
		D	82679 A4908
		SCALE	2:1
		SHEET OF	

MEE-1		
QTY / UNIT	MODEL USED ON	ASS'Y NO.
APPLICATION		
CODE	6401-451	

NOTICE TO PERSONS RECEIVING THIS DRAWING
THE TECHNICAL MATERIEL CORPORATION claims proprietary right in the material disclosed herein. This drawing is issued in confidence for engineering information only and may not be reproduced or used to manufacture anything shown herein without permission from THE TECHNICAL MATERIEL CORPORATION to the user. This drawing is issued for mutual assistance and is subject to recall at any time.

UNLESS OTHERWISE SPECIFIED DIMENSIONS ARE IN INCHES AND INCLUDE CHEMICALLY APPLIED OR PLATED FINISHES	
DECIMALS	FRACTIONS
.X ± .05	± 1/64
.XX ± .01	ANGLES
.XXX ± .005	± 0° 30'