

ZONE	LTR	DESCRIPTION	DATE	EM	NND	DRAFT	CHKD	APPD
		ORIGINAL RELEASE FOR PRODUCTION	11/17/71					

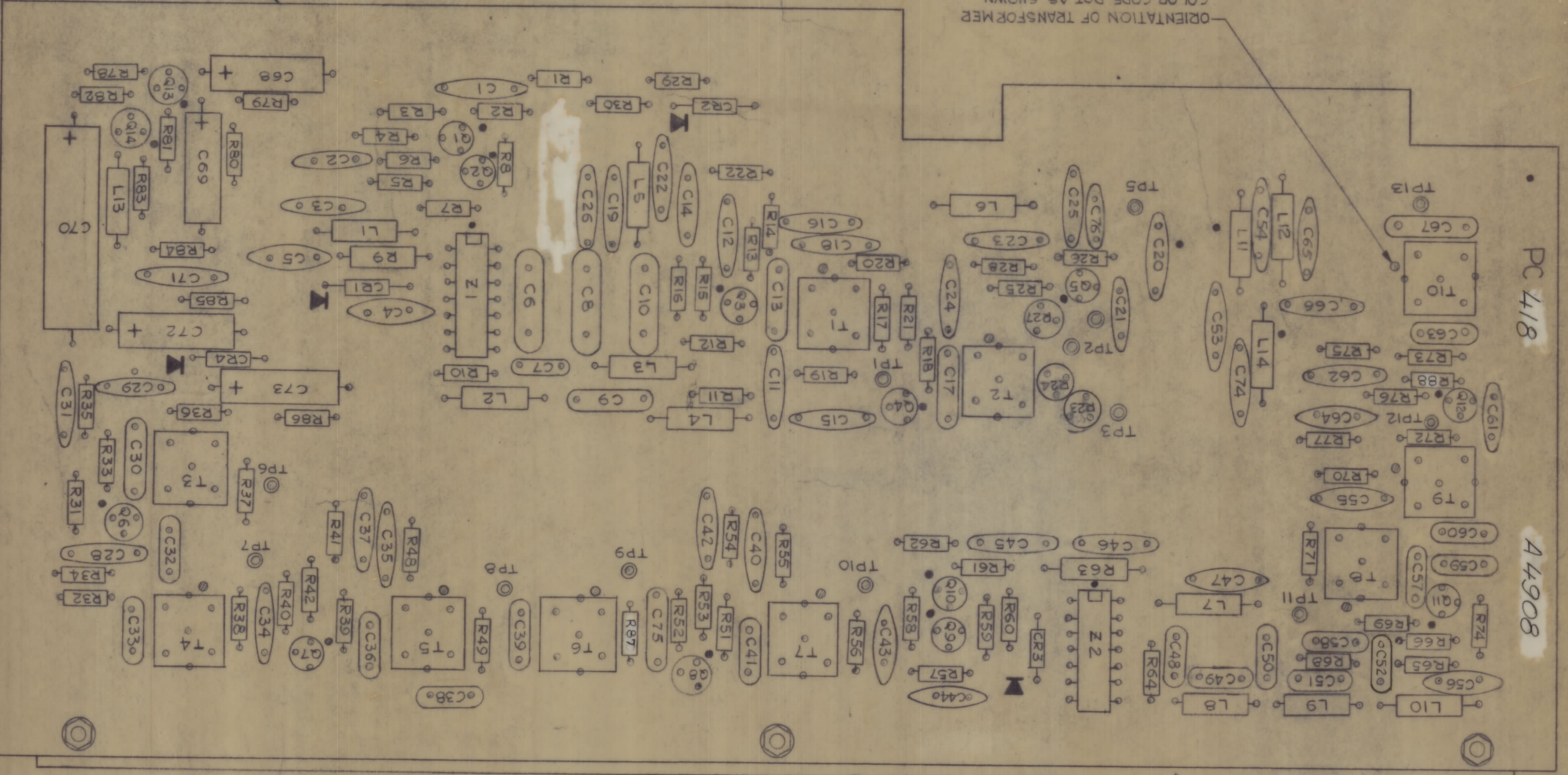
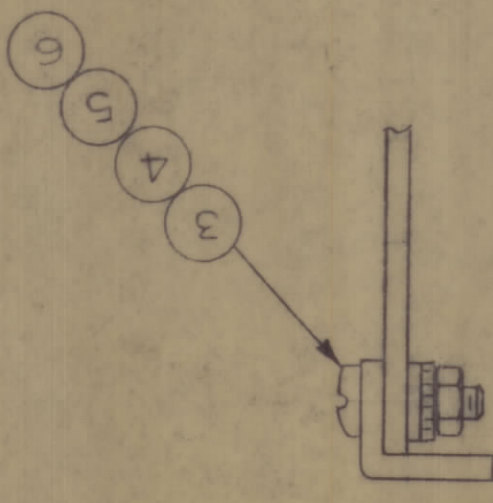
REVISIONS

QTY.	ITEM	PART NO.	DESCRIPTION	SYMBOL
3	6	NTH040BNG	NUT, PLAIN HEXAGONAL	
3	5	LW04MRN	WASHER, LOCK EXTERNAL	
3	4	FW04HBN	WASHER, FLAT	
3	3	SCBPO40ABN4	SCREW, MACHINE	
1	2	MS6004	STIFFENER, PRINTED CIRCUIT BOARD	
1	1	PC 418	PRINTED CIRCUIT BOARD	

1- TO MOUNT COMPONENTS, INSERT LEADS THROUGH PLATED THRU-HOLES.

- 2- CAUTION WHEN APPLYING HEAT AND SOLDER TO LEAD AND FOIL
- 3- CLEAN AND INSPECT AS PER SPEC. 5676.
- 4- FOR ELECTRICAL COMPONENT PART NUMBERS REFER TO NPL 44908
- 5- USE SYMBOL NUMBERS FOR ASSEMBLY REFERENCE.

ASSEMBLY NOTES:



ORIENTATION OF TRANSFORMER
COLOR CODE DOT AS SHOWN

SYMBOL SERIES 500

LIST OF MATERIAL

DATE: 11/17/71

MECH. DES. DATE: 11/17/71

THE TECHNICAL MATERIAL CORP.
MAMARONECK, NEW YORK

ASSY PRINTED CIRCUIT BD
CARRIER GENERATOR

SIZE CODE IDENT NO./DWG NO. D 82679 A4908

SCALE 2:1

SHEET 1 OF 1

UNLESS OTHERWISE SPECIFIED DIMENSIONS ARE IN INCHES AND INCLUDE CHEMICALLY APPLIED FINISHES

TOLERANCES ON

DECIMALS ± 1/64

FRACTIONS XX ± .01

ANGLES ± 0° .30'

MATERIAL

FINISH

NOTICE TO PERSONS RECEIVING THIS DRAWING

THE TECHNICAL MATERIAL CORPORATION claims proprietary right in the material disclosed herein. This drawing is issued in confidence for engineering information only and may not be reproduced or used to manufacture anything without permission from THE TECHNICAL MATERIAL CORPORATION.

APPLICATION

CODE 5401-451

QTY / UNIT MODEL USED ON ASSY NO. NEE-1