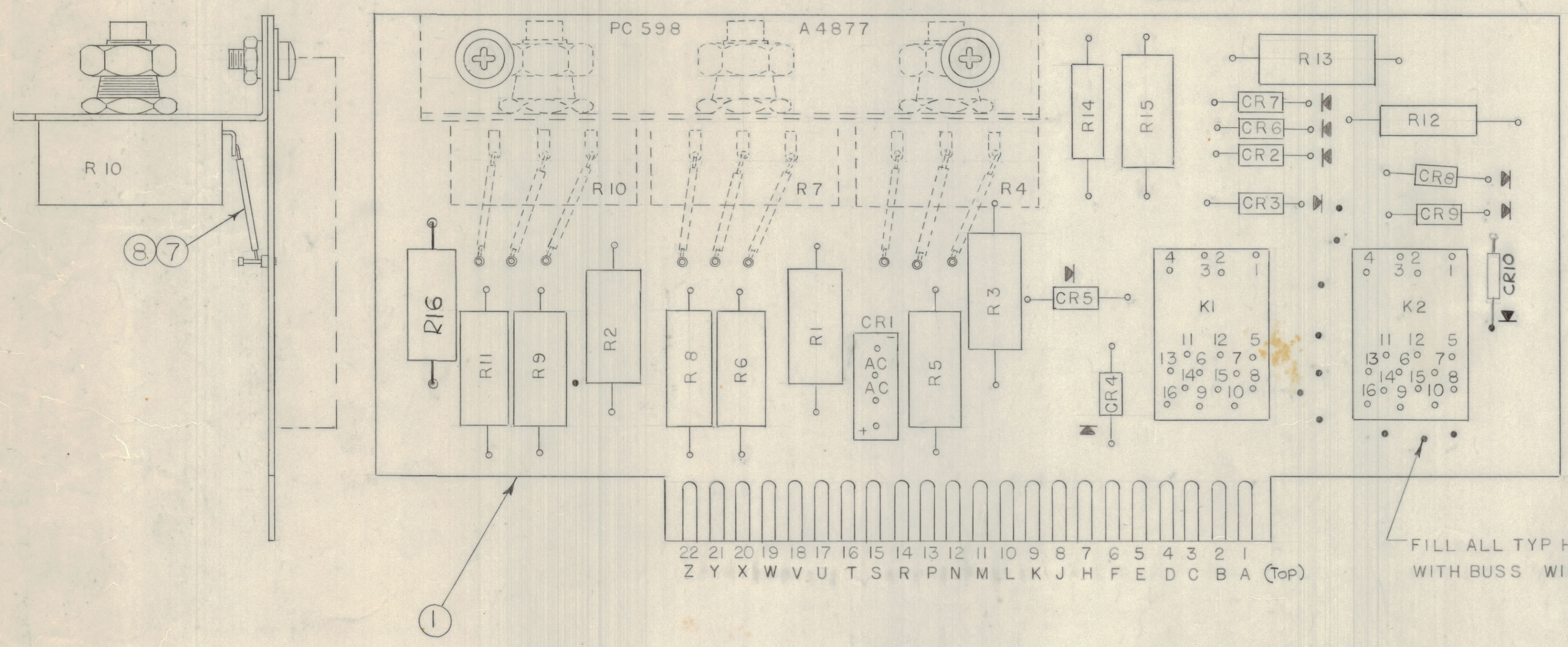
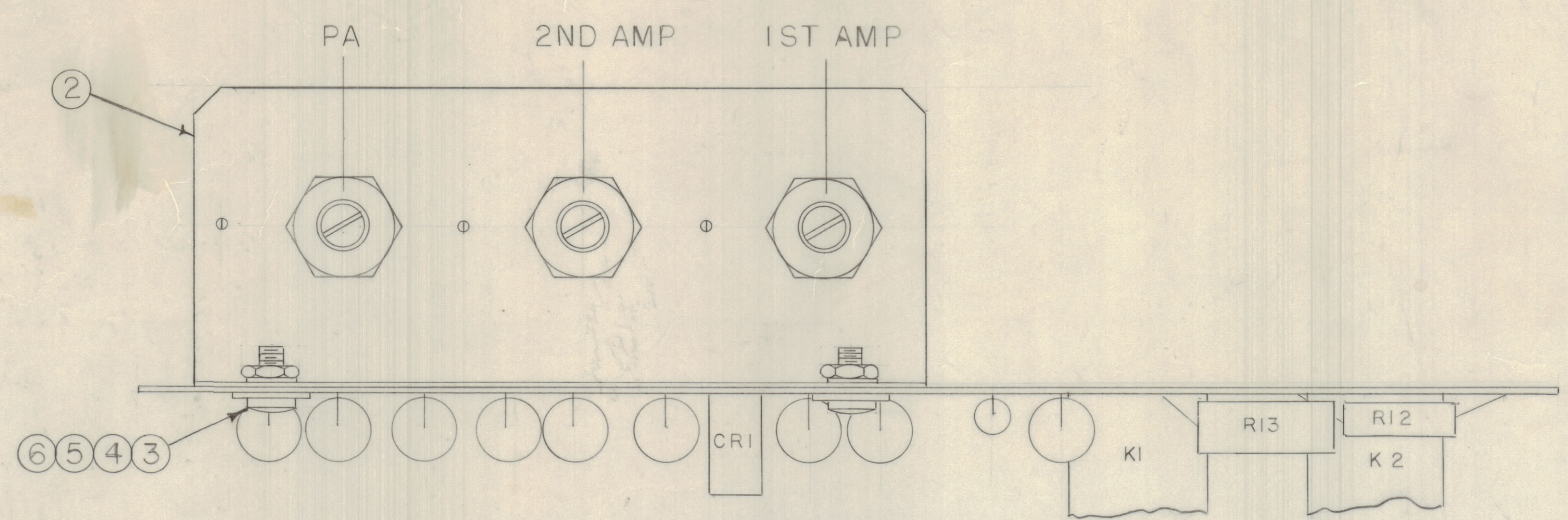


REVISIONS							
E.M.N.NO	DRAFT	CHKD	ZONE	LTR	DESCRIPTION	DATE	APPROVED
	RF			X	EXP RELEASE	6-25-71	
	①			Ø	ORIGINAL RELEASE FOR PRODUCTION	8/9/71	P.E.S.
20554				A	R16 ADDED	6-22-78	
21932				B	CR10 ADDED	3-29-82	



ASSEMBLY NOTES:

1. TO MOUNT COMPONENTS; INSERT LEAD THROUGH PLATED THRU-HOLES.
2. CAUTION WHEN APPLYING HEAT AND SOLDER TO LEAD AND FOIL.
3. CLEAN AND INSPECT AS PER SPEC S676
4. FOR ELECTRICAL PART NUMBERS REFER TO NPL A4877.
5. USE SYMBOL NUMBERS FOR ASSEMBLY REFERENCE.

QTY. REQ.	ITEM	PART NO.	DESCRIPTION	SYMBOL
A/R	9	BS 100	SOLDER, TIN ALLOY	
A/R	8	PX 104-1-034	INSUL.	
A/R	7	WL 100-7	WIRE	
2	6	LWI 06MRN	WASHER, LOCK	
2	5	FW06HBN	WASHER, FLAT	
2	4	NTH0632BN8	NUT, PLAIN, HEX	
2	3	SCBP0632BN6	SCW, MACHINE	
1	2	MS 5956	BRKT, RES MTG.	
1	1	PC 598	PRINTED CIRCUIT BD.	

FINAL APPROVAL	DATE	MECH. DES.	DATE	ELECT. DES.	DATE	CHECKED	DATE	DRAWN	DATE
	6/25/71				6/25/71			R FORLANO	6-25-71

THE TECHNICAL MATERIEL CORP. MAMARONECK, NEW YORK		
ASS'Y, PRINTED CIRCUIT BD. BIAS		
SIZE	CODE IDENT NO	DWG NO.
D	82679	A 4877
ISSUE	B	
SCALE	2/1	
SHEET	1 OF 1	

TLAA-1K		
QTY / UNIT	MODEL USED ON	ASS'Y NO.
APPLICATION		
CODE		
NOTICE TO PERSONS RECEIVING THIS DRAWING		
<small>THE TECHNICAL MATERIEL CORPORATION claims proprietary right in the material disclosed hereon. This drawing is issued in confidence for engineering information only and may not be reproduced or used to manufacture anything shown hereon without permission from THE TECHNICAL MATERIEL CORPORATION to the user. This drawing is loaned for mutual assistance and is subject to recall at any time.</small>		

UNLESS OTHERWISE SPECIFIED DIMENSIONS ARE IN INCHES AND INCLUDE CHEMICALLY APPLIED OR PLATED FINISHES	
TOLERANCES ON	
DECIMALS .X ± .05 .XX ± .01 .XXX ± .005	FRACTIONS ± 1/64 ANGLES ± 0° -30'
MATERIAL	
FINISH	