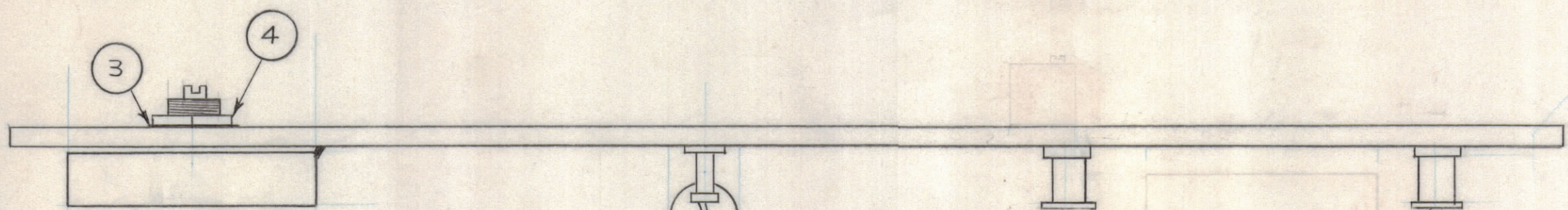
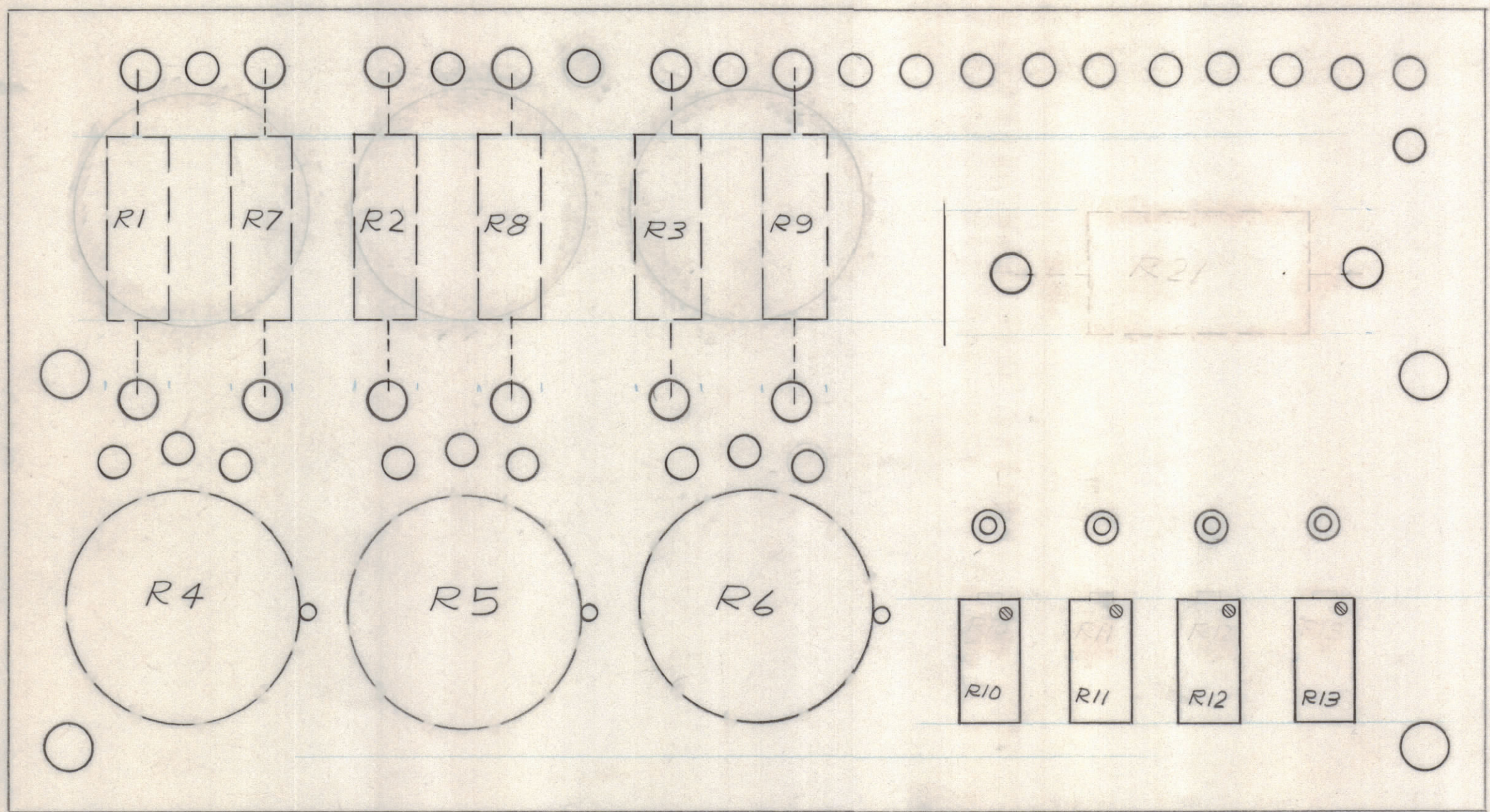


REVISIONS							
E.M.N.NO	DRAFT	CHKD	ZONE	LTR	DESCRIPTION	DATE	APPROVED
	KD			X	EXPERIMENTAL RELEASE	2-26-70	
	W			Ø	ORIGINAL RELEASE FOR PRODUCTION	3-2-70	



MOUNTING FOR R4, R5, & R6

ASSEMBLY NOTES

MOUNTING FOR R1, R2, R3, R7, R8, & R9

1. TO MOUNT COMPONENTS ; INSERT LEAD THROUGH PLATED THRU HOLES.
2. CAUTION WHEN APPLYING HEAT AND SOLDER TO LEAD AND FOIL
3. CLEAN AND INSPECT AS PER TMC SPEC S 676
4. FOR ELECTRICAL COMPONENT PART NUMBERS REFER TO NPL A 4793
5. USE SYMBOL NUMBERS FOR ASSEMBLY REFERENCE.

SPARE PARTS USE ONLY

QTY. REQ.	ITEM	PART NO.	DESCRIPTION	SYMBOL
3	4	NTH 3732BN/6	NUT, HEXAGONAL, PLAIN, 3/8-32	
3	3	LWI 37MSN	LOCKWASHER, EXTERNAL	
X	2	BS 100	SOLDER, TIN ALLOY	
1	1	PC 524	PRINTED CIRCUIT BOARD	

BUDETTI LIST OF MATERIAL

FINAL APPROVAL	DATE	THE TECHNICAL MATERIEL CORP. MAMARONECK, NEW YORK ASS'Y PRINTED CIRCUIT BD BIAS CONTROL
MECH. DES.	DATE	
ELECT. DES.	DATE	
CHECKED	DATE	
DRAWN	DATE	SIZE CODE IDENT NO. DWG NO. ISSUE C 82679 A 4793

SCALE SHEET OF

UNLESS OTHERWISE SPECIFIED DIMENSIONS ARE IN INCHES AND INCLUDE CHEMICALLY APPLIED OR PLATED FINISHES

TOLERANCES ON

DECIMALS	FRACTIONS
.X ± .05	± 1/64
.XX ± .01	ANGLES
.XXX ± .005	± 0° -30'

MATERIAL FINISH

QTY / UNIT	FALA 10K	AX5080
MODEL USED ON	APPLICATION	
CODE		
NOTICE TO PERSONS RECEIVING THIS DRAWING THE TECHNICAL MATERIEL CORPORATION claims proprietary right in the material disclosed hereon. This drawing is issued in confidence for engineering information only and may not be reproduced or used to manufacture anything shown hereon without permission from THE TECHNICAL MATERIEL CORPORATION to the user. This drawing is loaned for mutual assistance and is subject to recall at any time.		