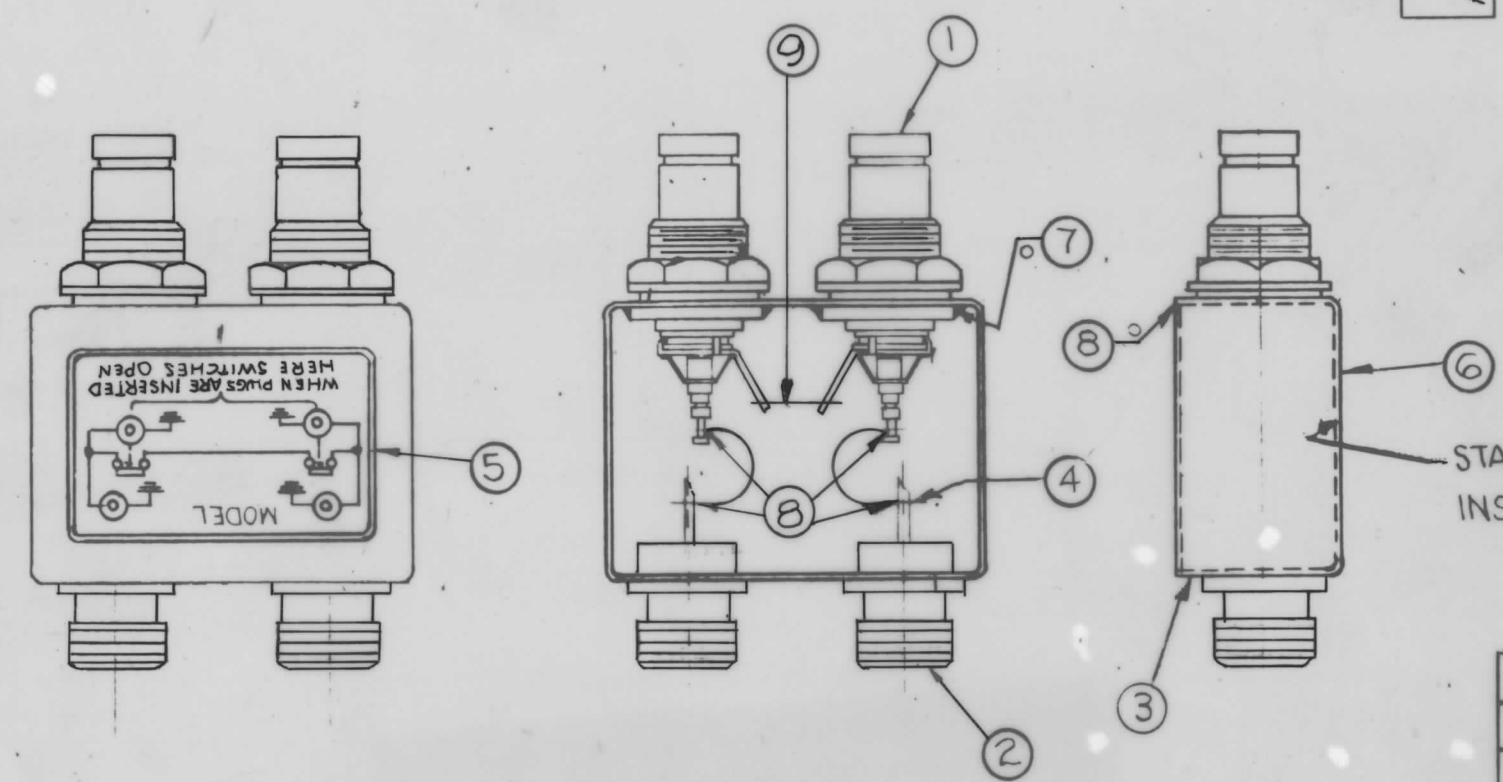


A  
4747

REVISIONS

SYM	DESCRIPTION	DATE	E.M.N. NO.	DRAFT	CHKD	APPR
X	EXP. RELEASE	9-4-68		H.G.	J.W.	J.W.
Ø	ORIGINAL RELEASE FOR PRODUCTION	9-5-68	Ø	R.G.	J.W.	J.W.
A	ITEM 1 WAS JJ 218 ITEM 2 WAS JJ 341	3-3-69	19295	GE	J.W.	FB



1. INDUCTION HEATING EQUIPMENT SET AT:  
AMPERES -  
SECONDS -
  2. USE ITEM SEVEN (7) FOR MOUNTING ITEMS ONE (1) AND TWO (2).
  3. USE ITEM EIGHT (8) FOR SEALING COVER ITEM THREE (3).
  4. STRAP (ITEM 4) MUST BE KEPT AS FLEXIBLE AS POSSIBLE. DO NOT ALLOW SOLDER TO RUN OVER STRAP. LAY STRAP IN SO THAT IT CANNOT TOUCH CAN OR CONNECTOR BODIES.
  5. FINISH AS FOLLOWS:  
S-114 - ZINC CHROMATE PRIMER  
S-115 - TMC SMOOTH GREY ENAMEL  
(DO NOT PAINT CONNECTOR BODIES.)
  6. AFFIX ITEM FIVE (5) TO FRONT AS SHOWN.
  7. AFFIX ITEM SIX (6) TO REAR AS SHOWN.
- Ø - DENOTES SOLDER ALL AROUND

REQ'D.	ITEM	PART NUMBER	DESCRIPTION	SYMBOL
1	9	WL 100-5	WIRE, BUSS-BAR #18	
X	8	BS 106-2	SOLDER, SOFT 361°	
X	7	BS 106-4	SOLDER, SOFT 450°	
1	6	NP 488	NAMEPLATE IDENTIFICATION (FOIL CAL.)	
1	5	NP 490-9	SCHEMATIC, DIAGRAM (FOIL CAL.)	
2	4	MS 2983-5	STRAP, FLEXIBLE CONNECTOR	
1	3	BX 200-2	CASE, COVER	
2	2	JJ 218	ADAPTOR, CONNECTOR	
2	1	JJ 342	ADAPTOR, CONNECTOR	

A MARTINENGO LIST OF MATERIAL

MATERIAL	SEE LIST	THE TECHNICAL MATERIEL CORP. MAMARONECK, NEW YORK	
FINISH	SEE NOTE NO 5	TITLE SW-478 ASSEMBLY	
UNLESS OTHERWISE SPECIFIED DIMENSIONS ARE IN INCHES AND INCLUDE CHEMICALLY APPLIED OR PLATED FINISHES		DRAWN H.G. 9-4-68	DATE 9-4-68
DECIMALS .X ± .05 .XX ± .01 .XXX ± .005		CHECKED J.W.	DATE 5/4/68
FRACTIONS ± 1/64 ANGLES ± 0° 30'		ELECT. DES. J.W.	DATE 9-5-68
TOLERANCES		MECH. DES. J.W.	DATE 9-5-68
THE CONTENTS OF THIS DRAWING ARE THE EXCLUSIVE PROPERTY OF THE TECHNICAL MATERIEL CORP. ITS UNAUTHORIZED USE OR REPRODUCTION IN WHOLE OR IN PART IS STRICTLY FORBIDDEN.		FINAL APPROV. J.W. A4747	
SCALE DO NOT SCALE		SHEET A	

NOTES