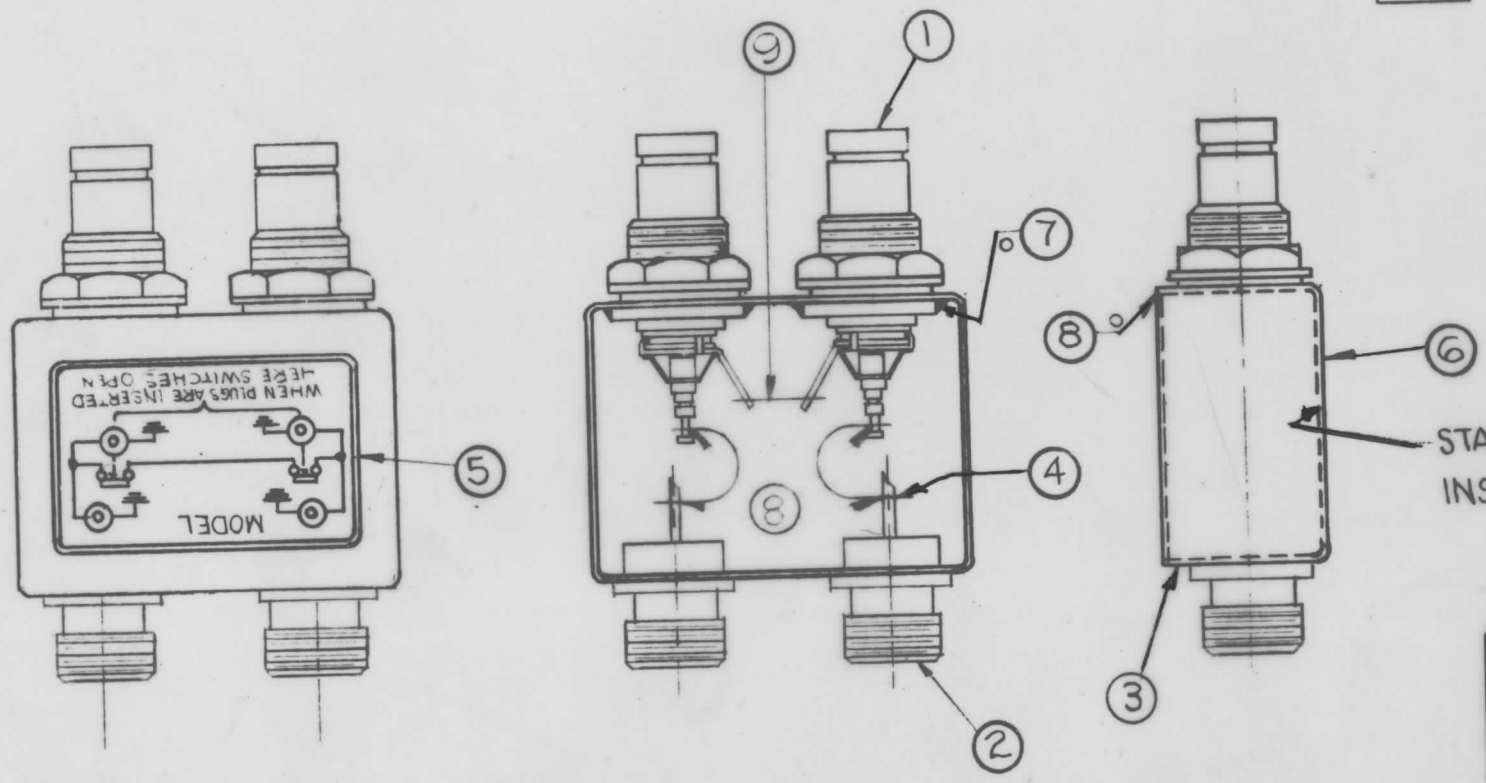


A-4709

REVISIONS

SYM	DESCRIPTION	DATE	E.M.N. NO.	DRAFT	CHKD	APPD
0	ORIGINAL RELEASE FOR PROD	4/15/68	18869	HS	HS	EFM
A	IT.(4) WAS MS-2983-6					



- INDUCTION HEATING EQUIPMENT SET AT:
AMPERES -
SECONDS -
- USE ITEM SEVEN(7) FOR MOUNTING ITEMS ONE(1) AND TWO(2).
- USE ITEM EIGHT(8) FOR SEALING COVER ITEM THREE(3).
- STRAP (ITEM 4) MUST BE KEPT AS FLEXIBLE AS POSSIBLE. DO NOT ALLOW SOLDER TO RUN OVER STRAP. LAY STRAP IN SO THAT IT CANNOT TOUCH CAN OR CONNECTOR BODIES.
- FINISH AS FOLLOWS:
S-114 - ZINC CHROMATE PRIMER
S-115 - TMC SMOOTH GREY ENAMEL
(DO NOT PAINT CONNECTOR BODIES.)
- AFFIX ITEM FIVE(5) TO FRONT AS SHOWN.
- AFFIX ITEM SIX(6) TO REAR AS SHOWN.

○ - DENOTES SOLDER ALL AROUND

NOTES

REQ'D.	ITEM	PART NUMBER	DESCRIPTION	SYMBOL
1"	9	WL-100-5	WIRE, BUSS-BAR #18	
X	8	BS-106-2	SOLDER, SOFT 361°	
X	7	BS-106-4	SOLDER, SOFT 450°	
1	6	NP-488	NAMEPLATE IDENTIFICATION (FOIL CAL.)	
1	5	NP-490-8	SCHEMATIC, DIAGRAM (FOIL CAL.)	
2	4	MS-2983-5	STRAP, FLEXIBLE CONNECTOR	
1	3	BX-200-2	CASE, COVER	
2	2	JJ 341	ADAPTOR CONNECTOR	
2	1	JJ 342	ADAPTOR, CONNECTOR	

A MARTINENGO LIST OF MATERIAL

MATERIAL: SEE LIST

FINISH: SEE NOTE NO.5

TITLE: THE TECHNICAL MATERIEL CORP. MAMARONECK, NEW YORK

SW-458 ASSEMBLY

UNLESS OTHERWISE SPECIFIED DIMENSIONS ARE IN INCHES AND INCLUDE CHEMICALLY APPLIED OR PLATED FINISHES

DECIMALS .X ± .05 .XX ± .01 .XXX ± .005	TOLERANCES	FRACTIONS ± 1/64 ANGLES ± 0° 30'
--	------------	---

DRAWN: JAD	DATE:	FINAL APPROVAL: EFM	DATE:
CHECKED: HS	DATE:		
ELECT. DES:	DATE:	A-4709	A
MECH. DES: JAD	DATE:		

THE CONTENTS OF THIS DRAWING ARE THE EXCLUSIVE PROPERTY OF THE TECHNICAL MATERIEL CORP. ITS UNAUTHORIZED USE OR REPRODUCTION IN WHOLE OR IN PART IS STRICTLY FORBIDDEN.