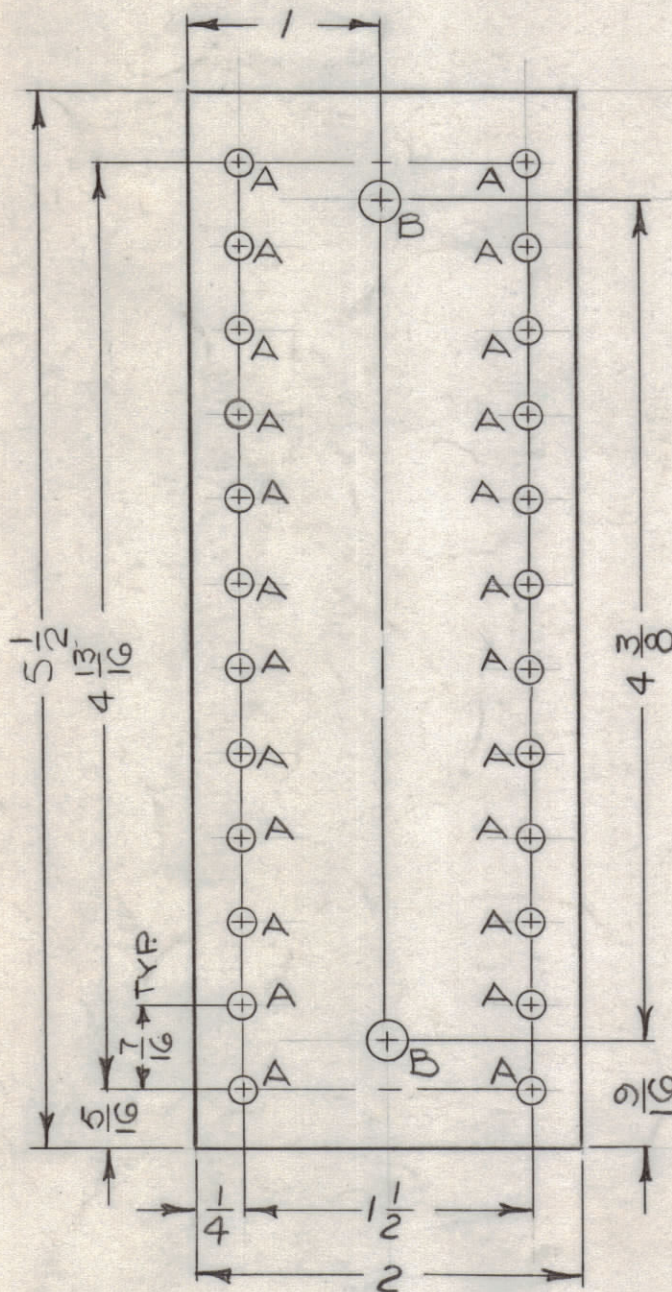


HOLES	DESCR	REQ
A	.116 DIA.	24
B	.189 DIA	2

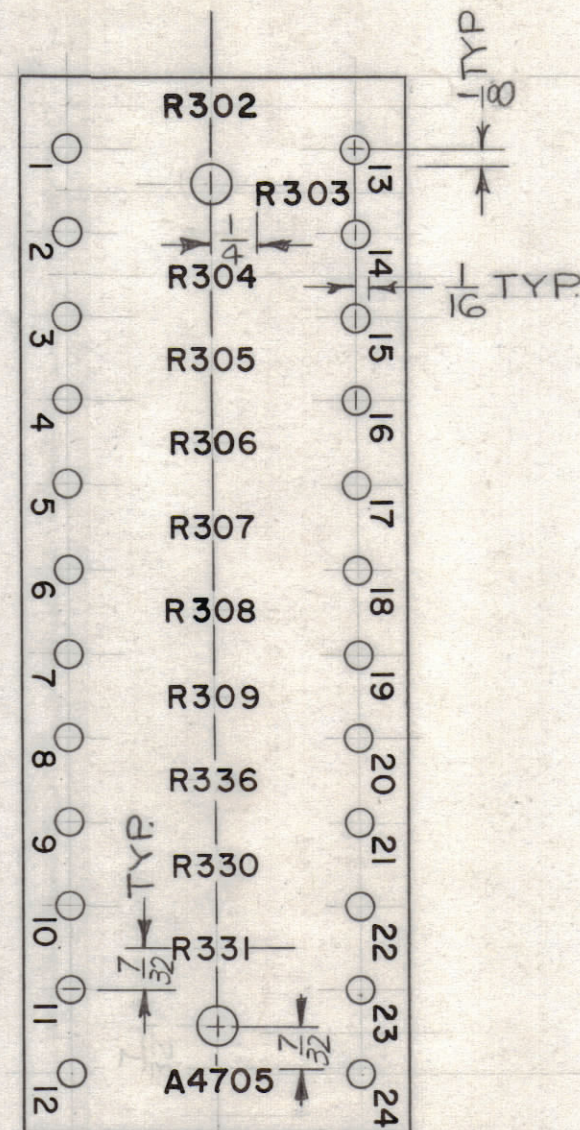
MARK TMC P/D(A4705) 1/8" HIGH GOTHIC W/LATEST REV. LETTER (ON REAR)

FUNGUS PROOF AS PER TMC SPECIFICATION S-113



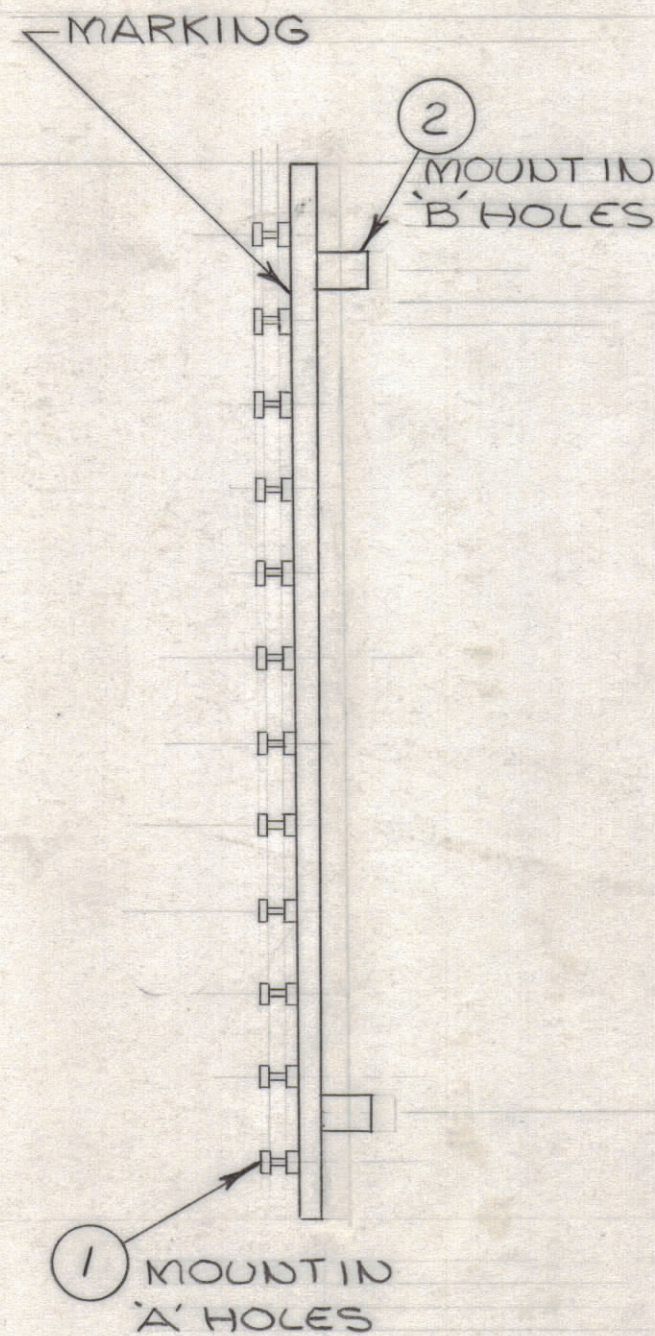
MAT'L: XYP PHENOLIC, 1/8" THICK

A4705-1 MACHINING



MARKING PROCESS: AS PER TMC SPECIFICATION S-727
LETTERING: 1/8" HIGH BLACK GOTHIC, LOCATED AS SHOWN

A4705-2 MARKING

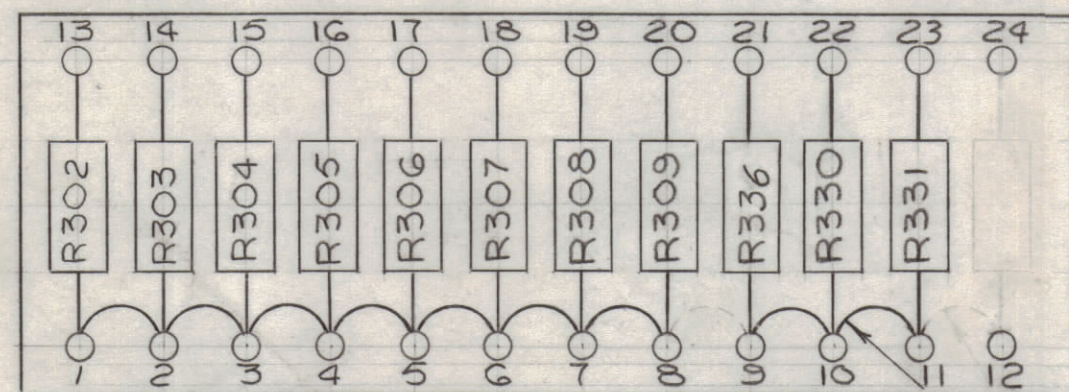


A4705-3 SUB ASS'Y

REVISIONS						
ZONE	LTR	DESCRIPTION	DATE	E.M.N.NO	DRAFT	CHKD APPD
	X	EXP. RELEASE	1-15-68			
	X1	5 1/2" DIMENSION ADDED	2-19-68			
	X2	R336 WAS R329	4-1-68			
	Ø	ORIGINAL RELEASE FOR PRODUCTION	4-16-68	Ø		
	A	JUMPERS SHOWN ON TOP SIDE - 4	4/28/72	Z0646	GE	Ø

NOTES:

- FOR ELECTRICAL COMPONENT PART NUMBERS REFER TO ML AX683
- USE SYMBOL NUMBERS FOR ASSEMBLY REFERENCE



A4705-4 FINAL ASS'Y

QTY. REQ.	ITEM	PART NO.	DESCRIPTION	SYMBOL
X	4	BS100	SOLDER, TIN ALLOY	-
X	3	WL100-6	WIRE, BUSS-BAR, TINNED	-
2	2	TE164-3	STAND-OFF, RIVET TYPE	B
24	1	TE105-4	TERMINAL LUG, SHORT TURRET	A

F. BUDETTI LIST OF MATERIAL				
FINAL APPROVAL		DATE		
MECH. DES.		DATE		
ELECT. DES.		DATE		
CHECKED		DATE		
DRAWN		DATE		
MATERIAL		FINISH		
SEE STEP 1		SEE STEP 2		

THE TECHNICAL MATERIEL CORP.
MAMARONECK, NEW YORK

RESISTOR BOARD ASS'Y

SIZE	CODE IDENT. NO.	DWG NO.	ISSUE
C	82679	A 4705	A

SCALE 1:1 SHEET OF

QTY / UNIT	MODEL USED ON	ASS'Y NO.
1	BCT-10KA	
APPLICATION		
CODE	A 5401-451	
NOTICE TO PERSONS RECEIVING THIS DRAWING		
THE TECHNICAL MATERIEL CORPORATION claims proprietary right in the material disclosed hereon. This drawing is issued in confidence for engineering information only and may not be reproduced or used to manufacture anything shown hereon without permission from THE TECHNICAL MATERIEL CORPORATION to the user. This drawing is loaned for mutual assistance and is subject to recall at any time.		

A4705
A
B