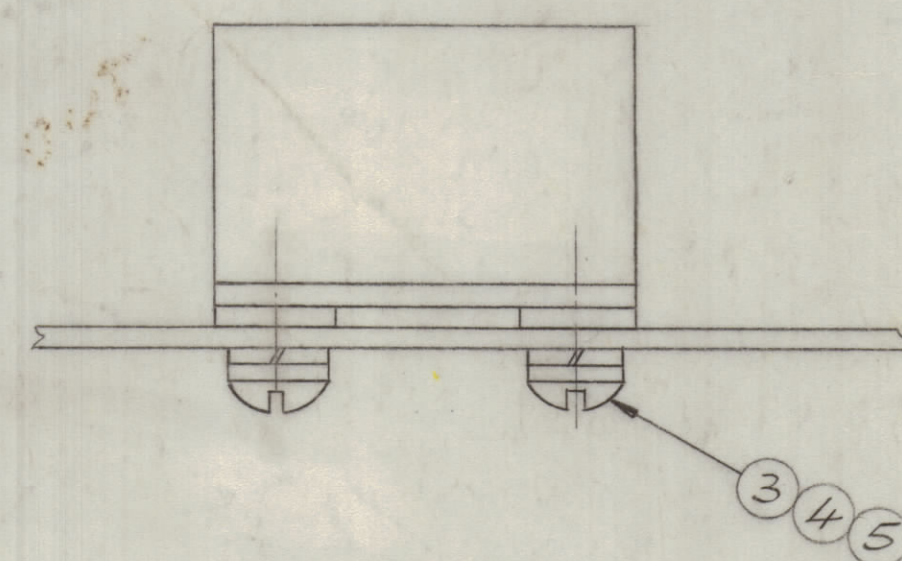
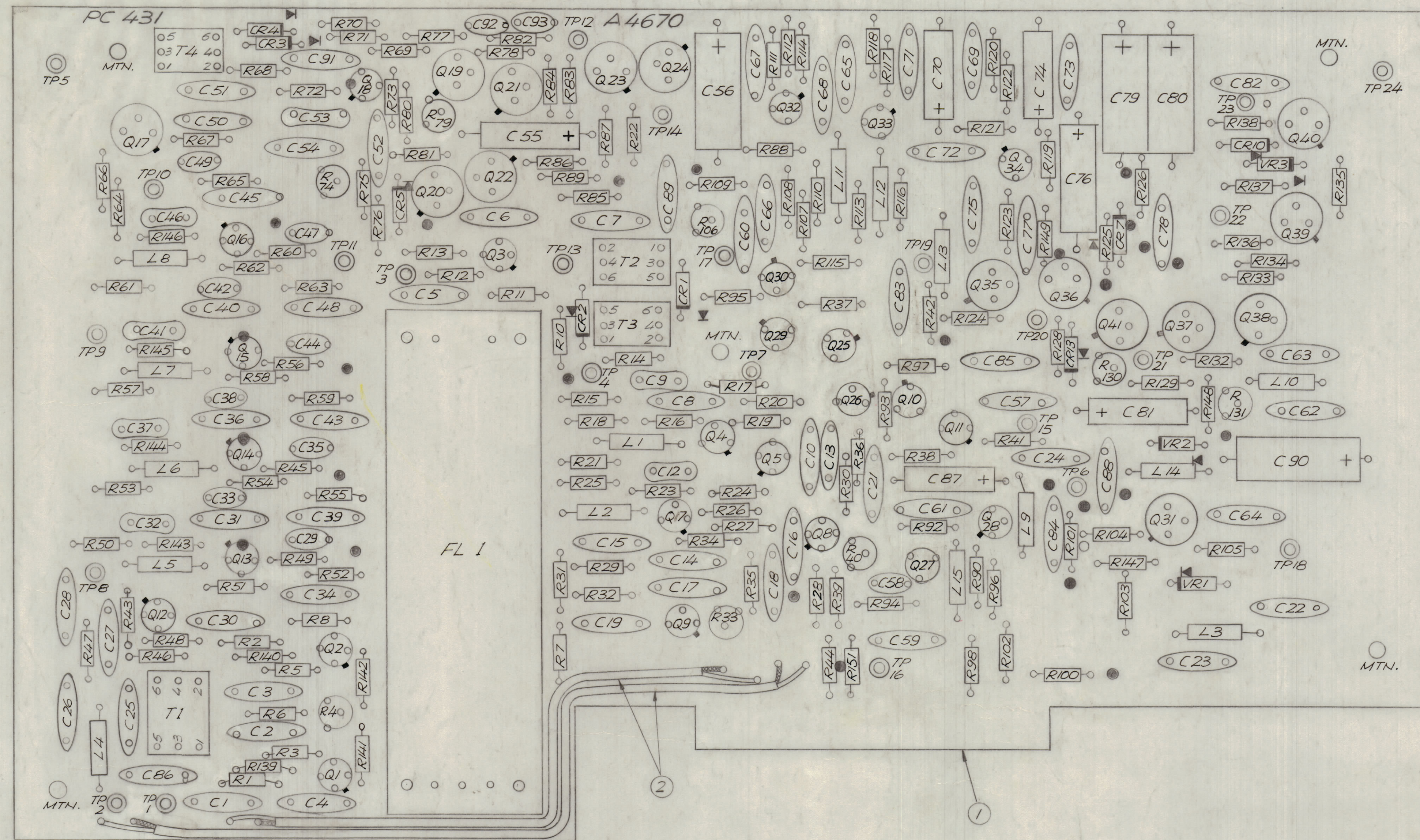


		REVISIONS					
ZONE	LTR	DESCRIPTION	DATE	E.M.N.NO	DRAFT	CHKD	APPD
	X	EXP. RELEASE	3/10/69		LH		
	0	ORIGINAL RELEASE FOR PRODUCTION	3/2/69		LH		
	1	R152 DELE	1/10/69	19637	LH		
	5	ADD PIN NO CODING TO T1-T4	12/6/68	20014	GE	(U)	OPC



ASSEMBLY NOTES:

1. TO MOUNT COMPONENTS, INSERT LEADS THROUGH THRU-HOLES
2. CAUTION, WHEN APPLYING HEAT AND SOLDER TO LEAD AND FOIL.
3. CLEAN AND INSPECT AS PER SPEC. S 676
4. FOR ELECTRICAL COMPONENT PART NUMBERS REFER TO NPL A 4670
5. USE SYMBOL NUMBERS FOR ASSEMBLY REFERENCE.

69 Fig 5-29 63 Fig 5-20

QTY.	REQ.	ITEM	PART NO.	DESCRIPTION	SYMBOL
X	6	BS 100		SOLDER, TIN ALLOY	
4	5	WA 109-18		WASHER, FIBER	
4	4	LWS 04 MRN		LOCKWASHER, SPRING TYPE	
4	3	SCPP0440 BNA		SCREW, MACHINE	
X	2	CA 1465-1		CABLE, COAXIAL, MIN.	
1	1	PC 431		PRINTED CIRCUIT BOARD	

FINAL APPROVAL		DATE		MECH. DES.		DATE		ELECT. DES.		DATE		CHECKED		DATE		DRAWN		DATE	
[Signature]		3/2/69		[Signature]		[Signature]		[Signature]		[Signature]		[Signature]		[Signature]		[Signature]		[Signature]	
<p>UNLESS OTHERWISE SPECIFIED DIMENSIONS ARE IN INCHES AND INCLUDE CHEMICALLY APPLIED OR PLATED FINISHES</p> <p>TOLERANCES ON</p> <p>DECIMALS: .X ± .05, .XX ± .01, .XXX ± .005</p> <p>FRACTIONS: ± 1/64</p> <p>ANGLES: ± 0°-30'</p>												<p>THE TECHNICAL MATERIEL CORP.</p> <p>MAMARONECK, NEW YORK</p>		<p>ASSY. PRINTED CIRCUIT BD.</p> <p>SECOND I. F. CARD</p>					
MATERIAL		FINISH		SIZE		CODE IDENT. NO.		DWG. NO.		ISSUE		SCALE		SHEET		OF			
				D		82679		A 4670		B		2:1							

1	QTY / UNIT	MODEL USED ON	ASSY NO.
1		HERR - 4	AX.5064
APPLICATION			
CODE			
<p>NOTICE TO PERSONS RECEIVING THIS DRAWING</p> <p>THE TECHNICAL MATERIEL CORPORATION claims proprietary right in the material disclosed herein. This drawing is issued in confidence for engineering information only and may not be reproduced or used to manufacture anything shown hereon without permission from THE TECHNICAL MATERIEL CORPORATION to the user. This drawing is loaned for mutual assistance and is subject to recall at any time.</p>			