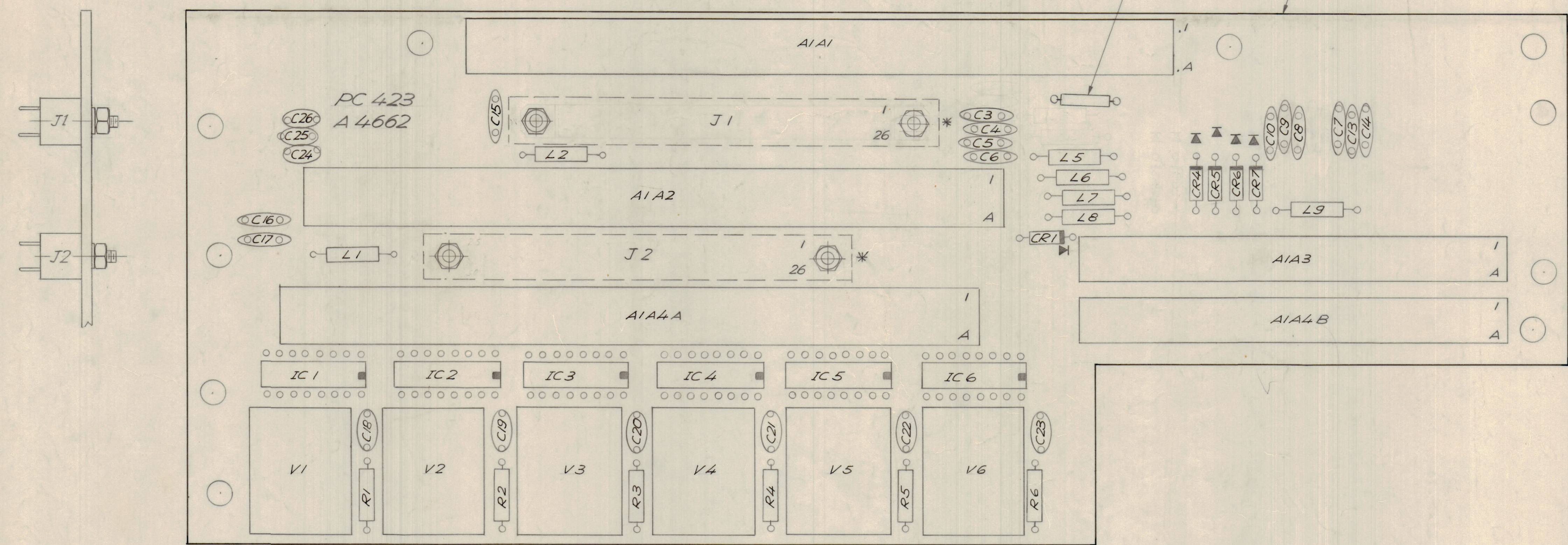
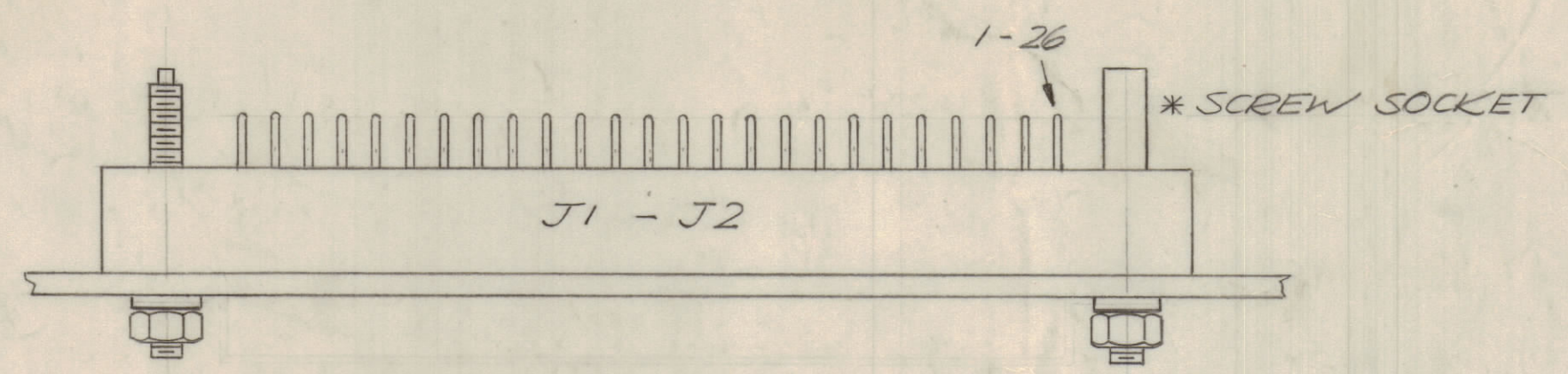


REVISIONS							
E.M.N.NO	DRAFT	CHKD	ZONE	LTR	DESCRIPTION	DATE	APPROVED
				X	EXP. RELEASE	3/26/69	
				Ø	ORIGINAL RELEASE FOR PROD	9/2/69	
138674				A	REVISED & CLARIFIED	1/19/70	
13867				B	DELE C1, C2, C11, C12, CR2, CR3, L3, L4 & MOD # GPR-10	6/16/70	



- ASSEMBLY NOTES:**
1. TO MOUNT COMPONENTS, INSERT LEADS THROUGH PLATED THRU-HOLES.
 2. CAUTION WHEN APPLYING HEAT AND SOLDER TO LEAD AND FOIL.
 3. CLEAN AND INSPECT AS PER SPEC. S 676.
 4. FOR ELECTRICAL COMPONENT PART NUMBERS REFER TO NPL A 4662.
 5. USE SYMBOL NUMBERS FOR ASSEMBLY REFERENCE.
 6. FOR JACK HARDWARE REFER TO JJ 343

QTY. REQ.	ITEM	PART NO.	DESCRIPTION	SYMBOL
X	4	BS 100	SOLDER, TIN ALLOY	
X	3	PX 370-22-7	INSULATION, SLEEVING	
X	2	WL 100-7	WIRE ELECT. BUSS.	
1	1	PC 423	PRINTED CIRCUIT BOARD	

LIST OF MATERIAL			
FINAL APPROVAL	DATE	THE TECHNICAL MATERIEL CORP.	
MECH. DES.	DATE	MAMARONECK, NEW YORK	
ELECT. DES.	DATE	ASSY. PRINTED CIRCUIT BD.	
CHECKED	DATE	INTERCONNECTING	
DRAWN	DATE	SIZE	CODE IDENT NO. DWG NO.
		D	82679 A 4662
			ISSUE
			B
		SCALE 2:1	SHEET OF

QTY / UNIT	MODEL USED ON	ASSY NO.
1	HERR - 4	AX 5003
APPLICATION		
	CODE	
<small>NOTICE TO PERSONS RECEIVING THIS DRAWING</small> <small>THE TECHNICAL MATERIEL CORPORATION claims proprietary right in the material disclosed herein. This drawing is issued in confidence for engineering information only and may not be reproduced or used to manufacture anything shown hereon without permission from THE TECHNICAL MATERIEL CORPORATION to the user. This drawing is loaned for mutual assistance and is subject to recall at any time.</small>		
MATERIAL		
FINISH		