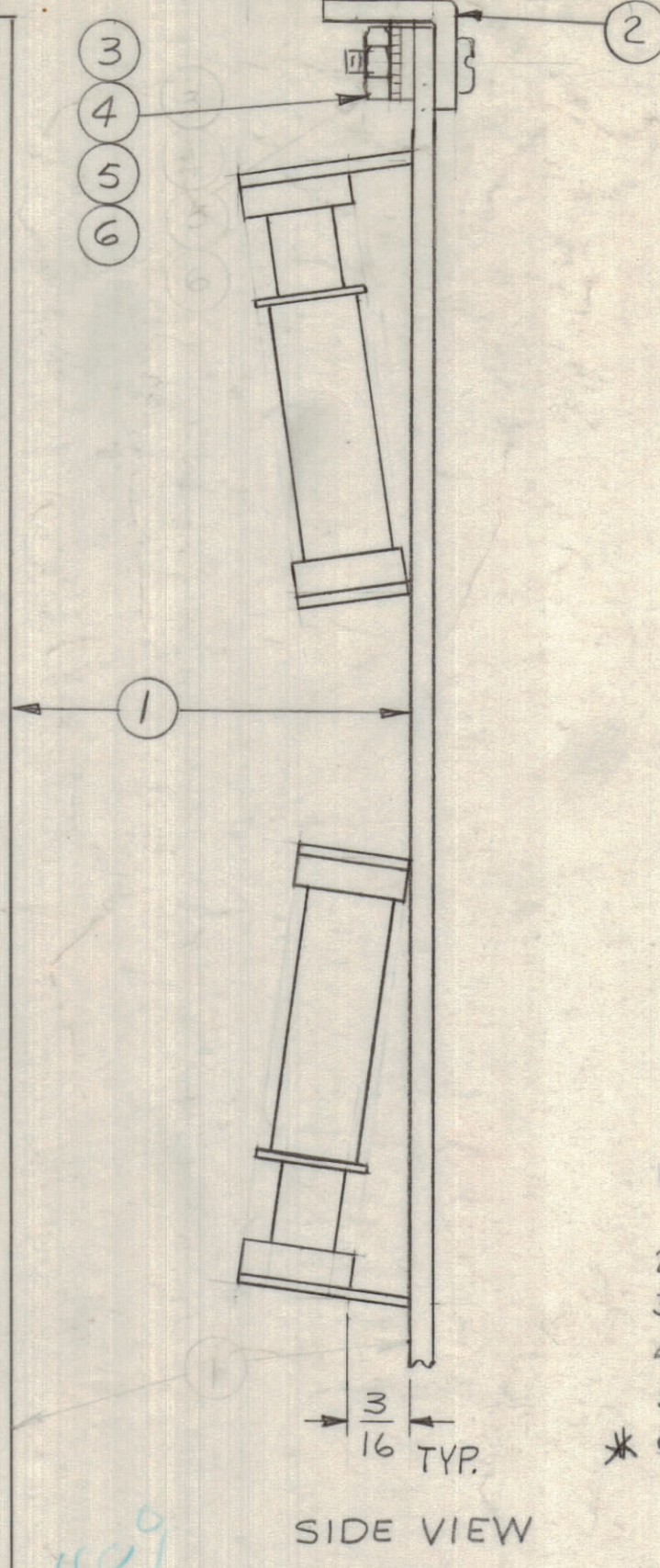
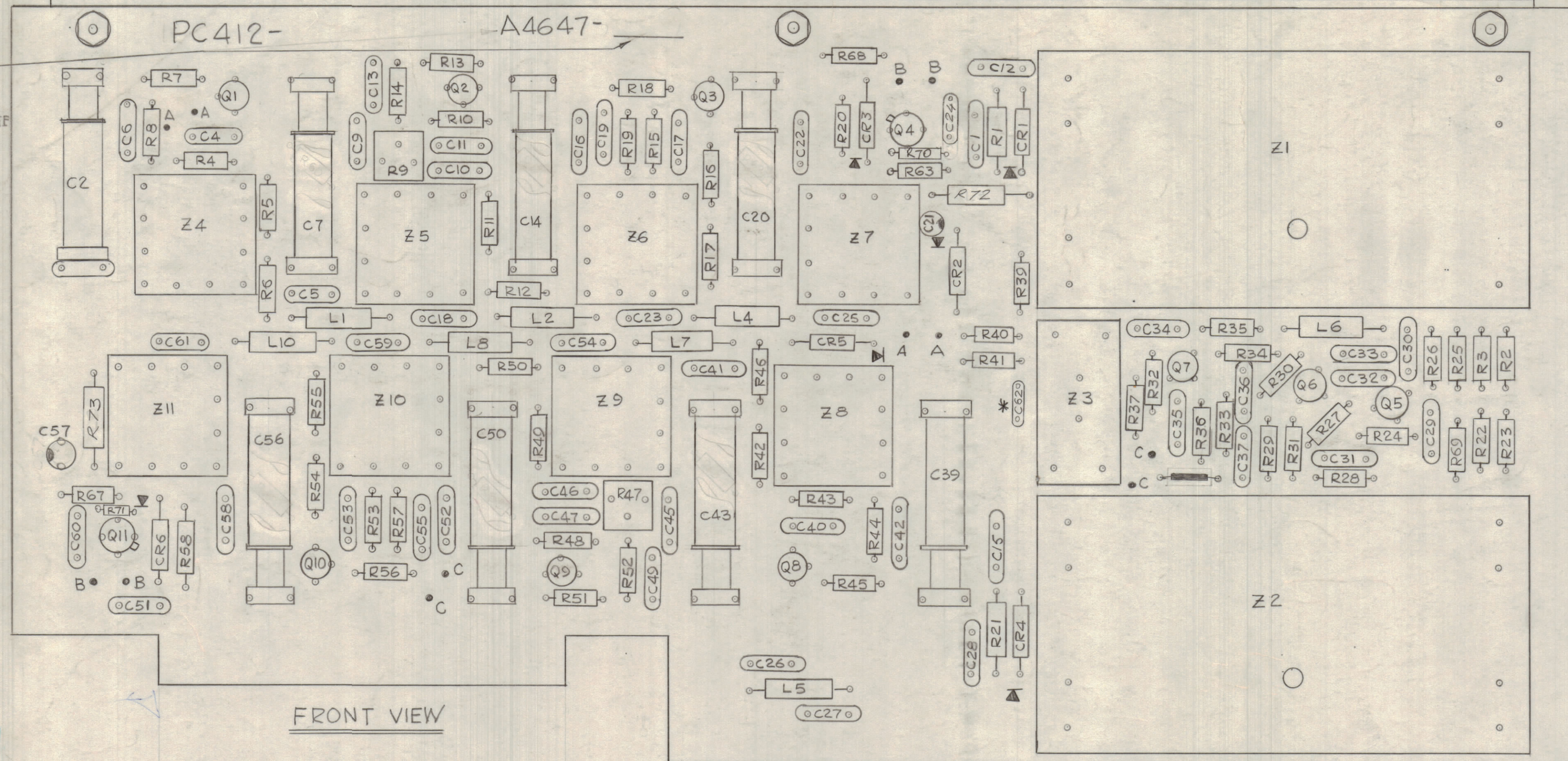


REFER TO  
NPL A4647  
FOR APPROPRIATE  
MARKING.

		REVISIONS					
ZONE	LTR	DESCRIPTION	DATE	E.M.N.NO	DRAFT	CHKD	APPD
	X2	REVISED & REDRAWN COMPLETELY	8-8-68		50C		
	X3	DELE. R60 TO R62, R 64 TO 66 & ADD SIDE VIEW	10-2-68				
	B	ORIGINAL RELEASE FOR PROD.	11-5-68			R.G.	
	A	DELE. R38, L3, L9 ADD. C62, R2, R73	8-15-68	10517		GE	

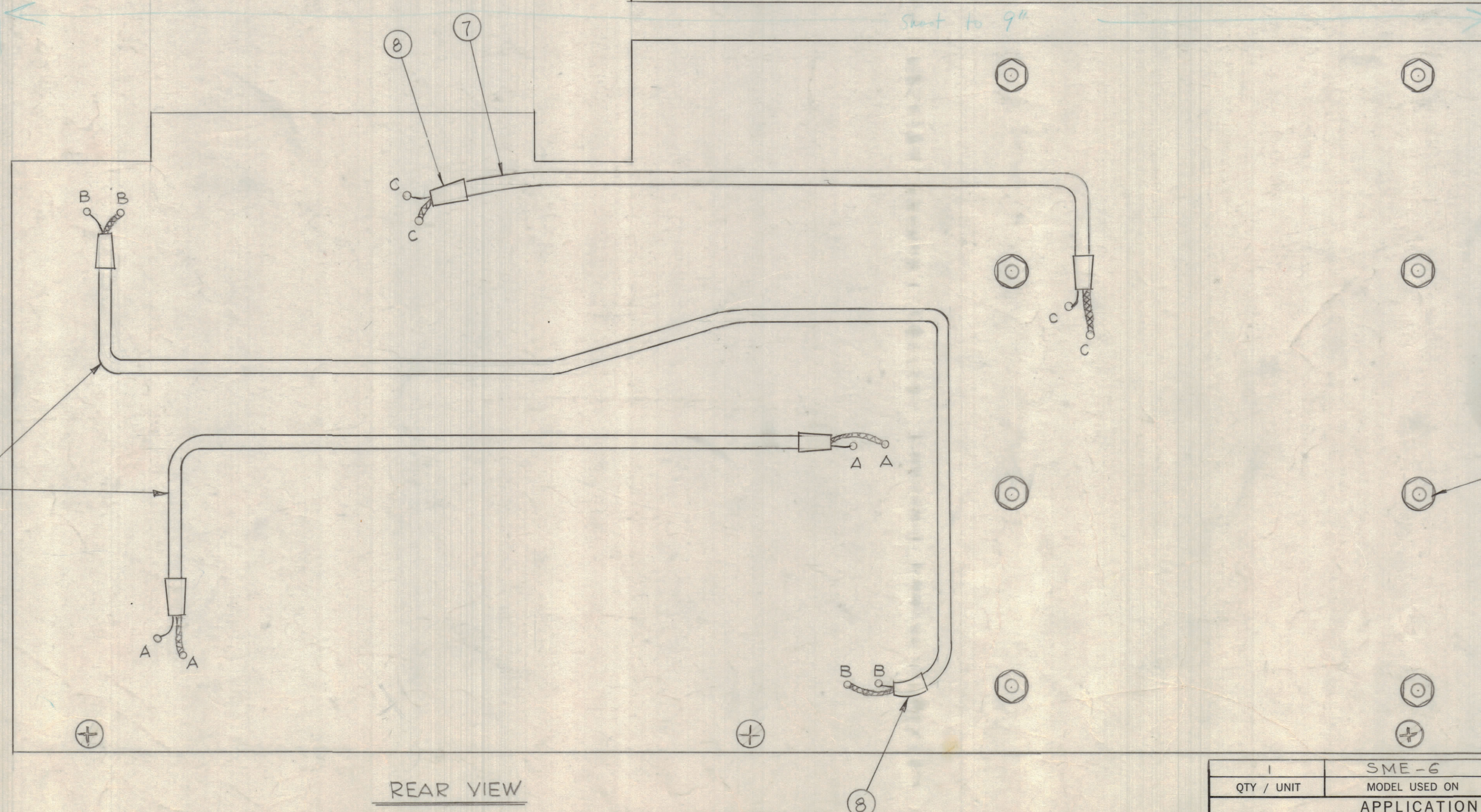


**ASSEMBLY NOTES**

- 1- TO MOUNT COMPONENTS, INSERT LEADS THROUGH PLATED THRU-HOLES.
- 2- CAUTION WHEN APPLYING HEAT AND SOLDER TO LEAD AND FOIL.
- 3- CLEAN AND INSPECT AS PER SPEC. 3676.
- 4- FOR ELECTRICAL COMPONENT PART NUMBERS REFER TO NPL A4647-
- 5- USE SYMBOL NUMBERS FOR ASSEMBLY REFERENCE.
- \* 6- CG2 VALUE: FOR OSC. FREQ. 20-32MC USE 100 PF (CC 100-30) FOR OSC FREQ 9.5-20MC USE 1000 PF (CC 100-29) FOR OSC FREQ. 2-9.5MC NO CAPACITOR REQ.

FRONT VIEW

SIDE VIEW



REAR VIEW

QTY. REQ.	ITEM	PART NO.	DESCRIPTION	SYMBOL
X	9	BS100	SOLDER, TIN ALLOY	
X	8	PX 830-18-1	INSULATION SLEEVING SHRINK	
X	7	RG 174/G	CABLE, RF	
11	6	NTH0440BN6	NUT, PLAIN HEXAGONAL	
11	5	LWE04 MRN	WASHER, LOCK EXTERNAL	
11	4	FW04HBN	WASHER, FLAT	
3	3	SCBP0440BN4	SCREW, MACHINE	
1	2	MSG004	STIFFENER, PRINTED CIRCUIT BD	
1	1	PC 412	PRINTED CIRCUIT BOARD	

O-POSE		LIST OF MATERIAL	
FINAL APPROVAL	DATE	THE TECHNICAL MATERIEL CORP.	
<i>[Signature]</i>	10-8-68	MAMARONECK, NEW YORK	
MECH. DES.	DATE	ASSY PRINTED CIRCUIT BD	
ELECT. DES.	DATE	RF AMPL	
CHECKED	DATE	SIZE	CODE IDENT. NO. DWG. NO.
<i>[Signature]</i>	10-7-68	D	82679 A4647-
DRAWN	DATE	SCALE	SHEET OF
G.D.L.	8-8-68	2:1	2 OF

SME-6		ASS'Y NO.
QTY / UNIT	MODEL USED ON	
APPLICATION		
CODE	S401-451	
NOTICE TO PERSONS RECEIVING THIS DRAWING		
THE TECHNICAL MATERIEL CORPORATION claims proprietary right in the material disclosed herein. This drawing is issued in confidence for engineering information only and may not be reproduced or used to manufacture anything shown hereon without permission from THE TECHNICAL MATERIEL CORPORATION to the user. This drawing is loaned for mutual assistance and is subject to recall at any time.		
MATERIAL		
FINISH		