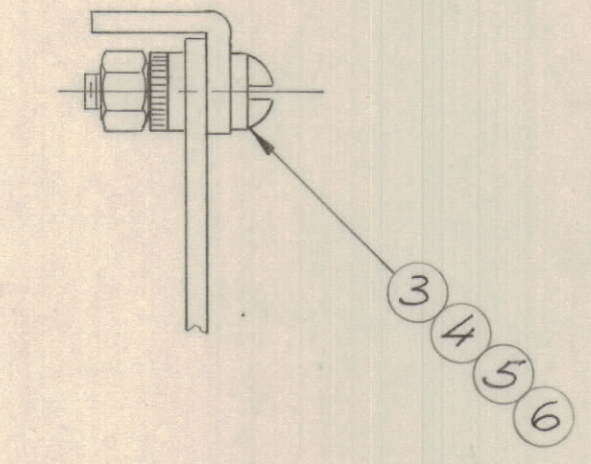
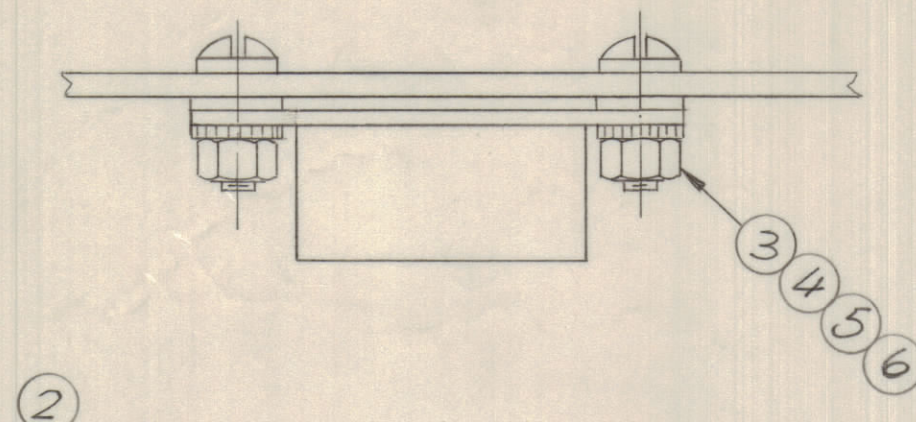
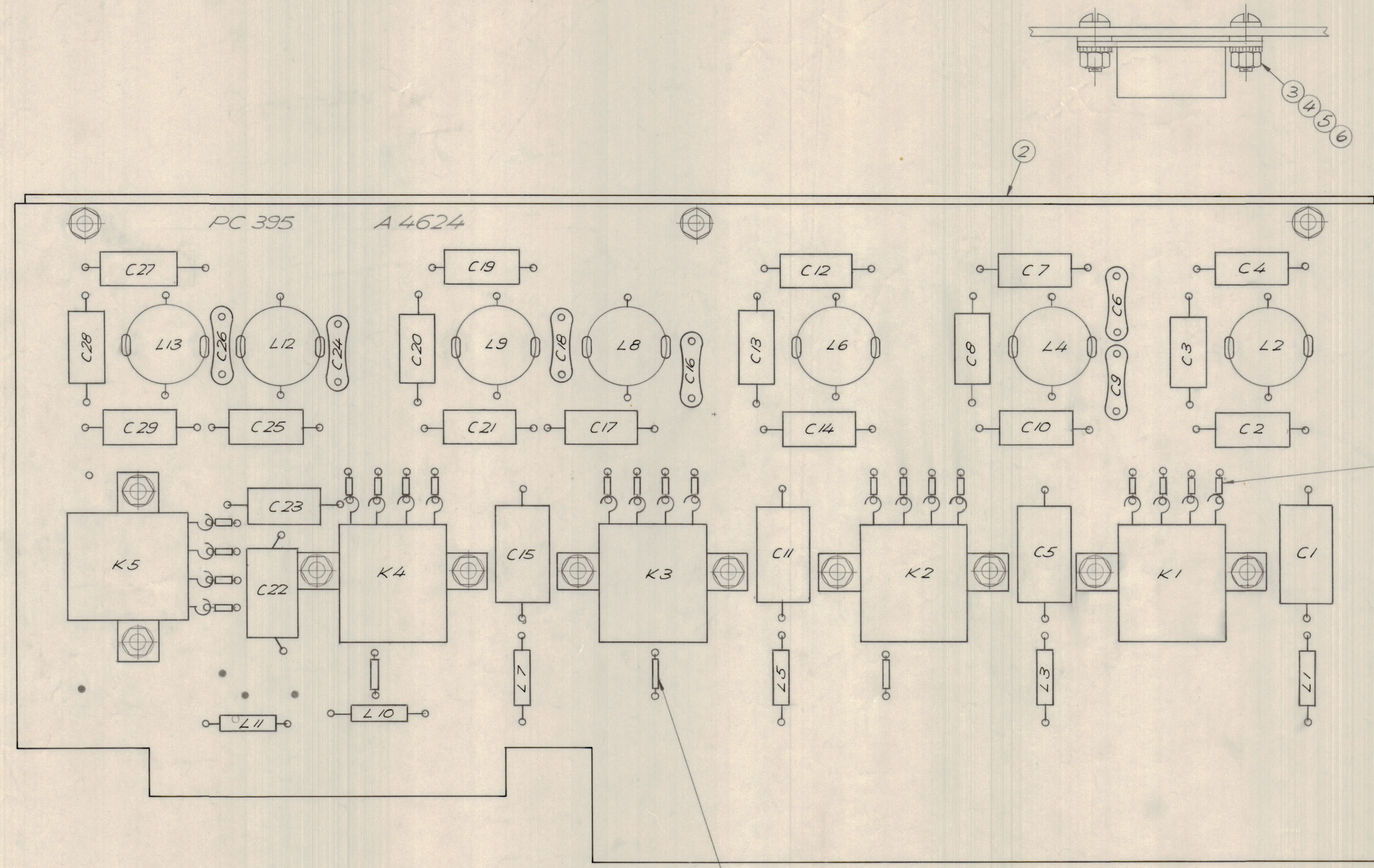


REVISIONS							
E.M.N.NO	DRAFT	CHKD	ZONE	LTR	DESCRIPTION	DATE	APPROVED
	LH			X	EXP. RELEASE	4/30/69	
				B	ORIGINAL RELEASE FOR PRODUCTION	5/21/69	
20354	GE	EJ		A	L4 WAS L3	11-30-72	EJ



ASSEMBLY NOTES:

1. TO MOUNT COMPONENTS, INSERT LEADS THROUGH PLATED THRU-HOLES.
2. CAUTION, WHEN APPLYING HEAT AND SOLDER TO LEAD AND FOIL.
3. CLEAN AND INSPECT AS PER SPEC. S 676.
4. FOR ELECTRICAL COMPONENT PART NUMBERS REFER TO MPL A 4624.
5. USE SYMBOL NUMBERS FOR ASSEMBLY REFERENCE.

SYMBOL SERIES 1400

QTY.	ITEM	PART NO.	DESCRIPTION	SYMBOL
X	10	BS 100	SOLDER, TIN ALLOY	
X	9	PX370-22-7	INSULATION, SLEEVING	
X	8	PX100-6-022	INSULATION, SLEEVING, TEFLON	
X	7	WL 100-7	WIRE ELECT. BUSS.	
13	6	NTH 0440 B N16	NUT, PLAIN HEXAGONAL	
13	5	FW 04 HBN	WASHER, FLAT	
13	4	LWE 04 MRN	WASHER, LOCK EXTERNAL	
13	3	SCPD 0440 B N4	SCREW, MACHINE	
1	2	MS 6004	STIFFENER, PRINTED CIRCUIT BD.	
1	1	PC 395	PRINTED CIRCUIT BOARD	

LIST OF MATERIAL

UNLESS OTHERWISE SPECIFIED DIMENSIONS ARE IN INCHES AND INCLUDE CHEMICALLY APPLIED OR PLATED FINISHES	FINAL APPROVAL SJM DATE 5/20/69	MECH. DES. DATE	ELECT. DES. DATE	CHECKED AJO DATE 5/16/69	DRAWN L. J. Hill DATE 4/30/69
TOLERANCES ON					
DECIMALS	FRACTIONS				
.X ± .05	± 1/64				
.XX ± .01	ANGLES				
.XXX ± .005	± 0° - 30'				

THE TECHNICAL MATERIEL CORP.
MAMARONECK, NEW YORK

ASSY. PRINTED CIRCUIT BD.
OUTPUT FILTER "B"

QTY / UNIT	LFE - 1	MODEL USED ON	ASS'Y NO.
APPLICATION			
CODE			
NOTICE TO PERSONS RECEIVING THIS DRAWING THE TECHNICAL MATERIEL CORPORATION claims proprietary right in the material disclosed hereon. This drawing is issued in confidence for engineering information only and may not be reproduced or used to manufacture anything shown hereon without permission from THE TECHNICAL MATERIEL CORPORATION to the user. This drawing is loaned for mutual assistance and is subject to recall at any time.			

SIZE	CODE	IDENT NO.	DWG NO.	ISSUE
D	82679	A 4624		A
SCALE 2:1				SHEET OF