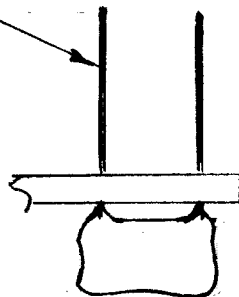
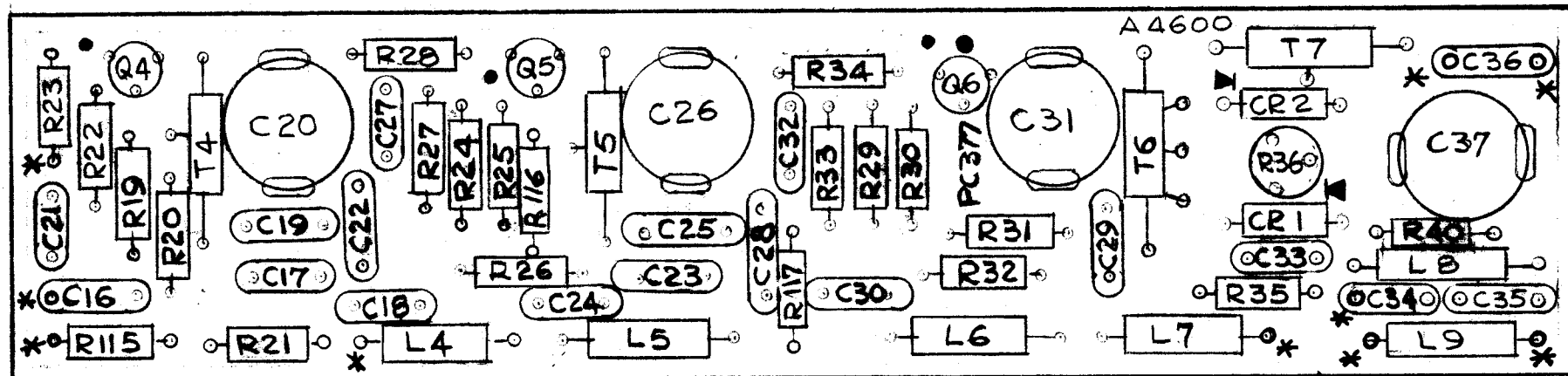


LEAVE LEADS OF COMPONENTS
MARKED * 1" LONG
(10 PLACES)



REVISIONS						
ZONE	LTR	DESCRIPTION	DATE	E.M.N.NO	DRAFT	CHKD APPD
	X	EXP. RELEASE	5-9-67	~	G.D.L	<i>[Signature]</i>
	X1	NOTE & BUILD UP ADDED	12-18-67		G.D.L	<i>[Signature]</i>
	X2	ELEC COMP DELETED SEE NPL	12/21/67	X2	JD	<i>[Signature]</i>
	Ø	ORIGINAL RELEASE	12/2/67	Ø	CV	<i>[Signature]</i>



ASSEMBLY NOTES

1. TO MOUNT COMPONENTS, INSERT LEADS THROUGH PLATED THR-HOLES.
2. CAUTION WHEN APPLYING HEAT AND SOLDER TO LEAD AND FOIL
3. CLEAN AND INSPECT AS PER S676.
4. FOR ELECTRICAL COMPONENT PART NUMBERS REFER TO NPL A4600.
5. USE SYMBOL NUMBERS FOR ASSEMBLY REFERENCE.

1	VOX-7	A 4505
1	CHG-(14	A 4505
1	MMX-()	A 4505
QTY / UNIT	MODEL USED ON	ASS'Y NO.
APPLICATION		
	CODE A	S401-451

NOTICE TO PERSONS RECEIVING THIS DRAWING
THE TECHNICAL MATERIEL CORPORATION claims proprietary right in the material disclosed hereon. This drawing is issued in confidence for engineering information only and may not be reproduced or used to manufacture anything shown hereon without permission from THE TECHNICAL MATERIEL CORPORATION to the user. This drawing is loaned for mutual assistance and is subject to recall at any time.

UNLESS OTHERWISE SPECIFIED
DIMENSIONS ARE IN INCHES
AND INCLUDE CHEMICALLY APPLIED
OR PLATED FINISHES

DECIMALS	FRACTIONS
.X ± .05	1/64
.XX ± .01	TPLS. ANGLES
.XXX ± .005	0°-30'

MATERIAL
FINISH.

1	1	PC377	PRINTED CIRCUIT BOARD	
REQ'D	ITEM	PART NUMBER	DESCRIPTION	SYM.
O.P.OSE LIST OF MATERIAL				
FINAL APPROVAL <i>[Signature]</i>			DATE 12/19/67	
MECH. DES.			DATE	
ELECT. DES. <i>[Signature]</i>			DATE 12-19-67	
CHECKED <i>[Signature]</i>			DATE 12/21/67	
DRAWN G.D.L			DATE 5-18-67	
THE TECHNICAL MATERIEL CORP. MAMARONECK, NEW YORK				
ASSY PRINTED CIRCUIT BD 120 Mc GEN.				
SIZE	CODE IDENT. NO.	DWG NO.	ISSUE	
B	82679	A 4600	Ø	
SCALE 2:1			SHEET OF	