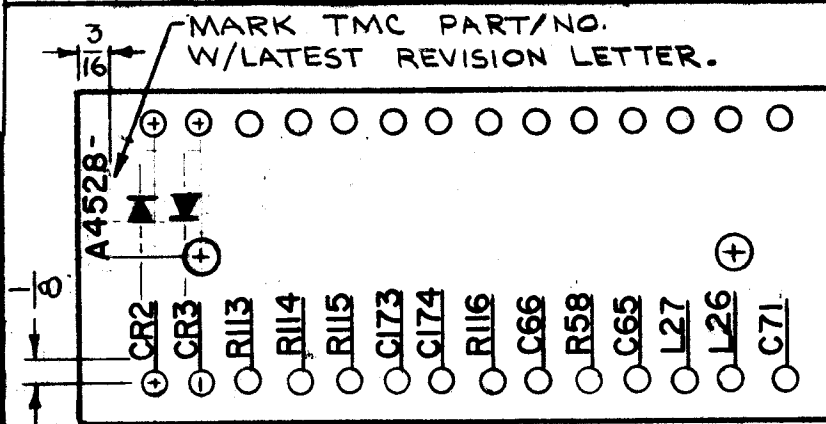


MACHINING  
A4528-1

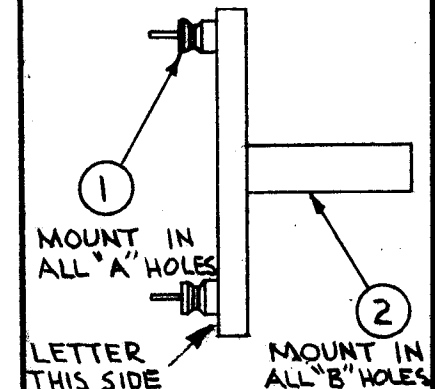
HOLES:  
A - #32 DRILL - 28 REQ  
B - .189 DIA - 2 REQ

B  
A4528

REVISIONS					
SYM	DESCRIPTION	DATE	E.M.N. NO.	DRAFT	CHKD APPD
X	EXPERIMENTAL RELEASE	10/25/66	X	RME	F&C
Ø	ORIGINAL RELEASE FOR PRODUCTION	10/10/66	Ø	RME	Jde
A	ITEM 6 WAS CM20GF102G03 - ADDED LACATING SYMBOLS FOR CR2 & CR3 - ON A4528-4 SOLDER NOTE CLARIFIED	3-7-67	17922	GDL	CPB MWA
B	IT 17 THRU 24 ADDED	6.6.67	18148	WHD	RA



MARKING PROCESS: AS PER TMC SPEC S727  
LETTERING: 1/8 HIGH BLACK GOTHIC



SUB ASS'Y.  
A4528-3

LETTERING  
A4528-2

13	17	MWC22 (7) U9	CABLE, INSULATED	
4-1/2	16	MWC22 (7) U5		
10-1/2	15	MWC22 (7) U1		
15-1/2	14	MWC22 (7) U0	CABLE, INSULATED	
X	13	BS100	SOLDER, TIN ALLOY	
X	12	WL100-7	WIRE, BUSS BAR	
X	11	PX104-1-.022	INSULATION, SLEEVING	
1	10	CC100-16	CAPACITOR, FIXED CERAMIC	C71
2	9	CL275-120	COIL, RF FIXED	L27, 26
1	8	RC20GF473J	RESISTOR, FIXED COMP	R58
2	7	CC101-3	CAPACITOR, FIXED CERAMIC	C65, 66
2	6	CM20F102G03	CAPACITOR, FIXED MICA	C173, 174
2	5	RC20GF224J	RESISTOR, FIXED COMP	R114, 116
2	4	RC20GF225J	RESISTOR, FIXED COMP	R113, 115
2	3	IN463	SEMICONDUCTOR, DIODE	CR2, CR3
2	2	TE108-24	STANDOFF, RIVET, TYPE	
	1	TE109-3	TERMINAL, STUD	

REQ'D.	ITEM	PART NUMBER	DESCRIPTION	SYMBOL
--------	------	-------------	-------------	--------

LIST OF MATERIAL

MATERIAL  
1/8 THK. PHENOLIC XXXP

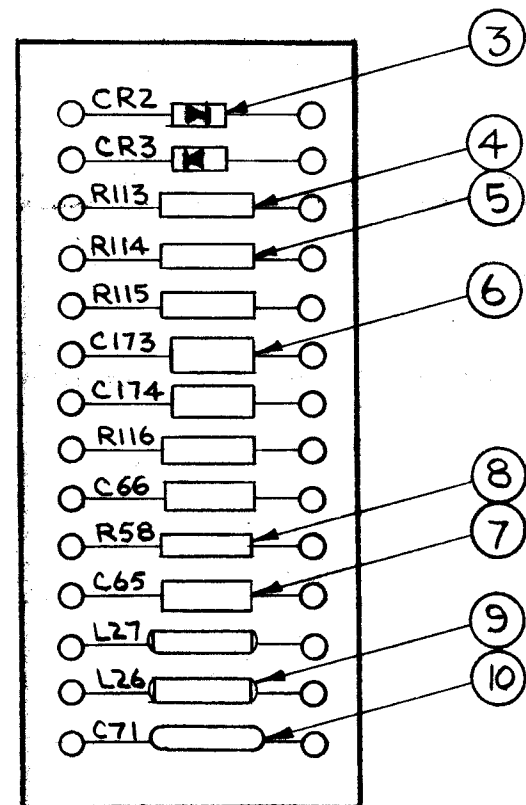
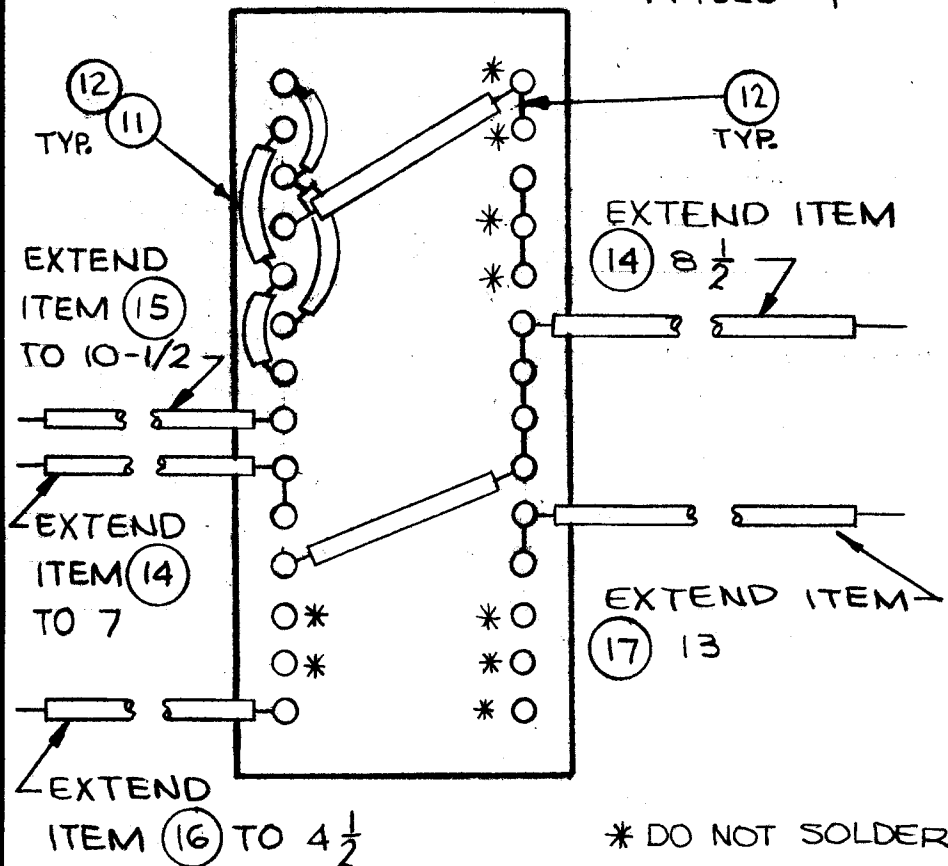
THE TECHNICAL MATERIEL CORP.  
MAMARONECK, NEW YORK

FINISH

TITLE  
TERMINAL BOARD ASS'Y

UNLESS OTHERWISE SPECIFIED DIMENSIONS ARE IN INCHES AND INCLUDE CHEMICALLY APPLIED OR PLATED FINISHES	DRAWN RME	DATE 10/25/66	FINAL APPROVAL <i>[Signature]</i>	DATE 11/15/66
	CHECKED <i>[Signature]</i>	DATE 10/26/66		
DECIMALS .X ± .05 .XX ± .01 .XXX ± .005	TOLERANCES	FRACTIONS ± 1/64 ± 0° 30'	ELECT. DES. <i>[Signature]</i>	DATE 10/25/66
			MECH. DES. <i>[Signature]</i>	DATE
			A4528	B
			SHEET	REV. LTR.

FINAL ASS'Y.  
A4528-4



NOTES

THE CONTENTS OF THIS DRAWING ARE THE EXCLUSIVE PROPERTY  
OF THE TECHNICAL MATERIEL CORP. ITS UNAUTHORIZED USE OR  
REPRODUCTION IN WHOLE OR IN PART IS STRICTLY FORBIDDEN.

GPR 90 RXDS		
Q'TY./UNIT	MODEL USED ON	ASS'Y. NO.
SCALE	CODE	