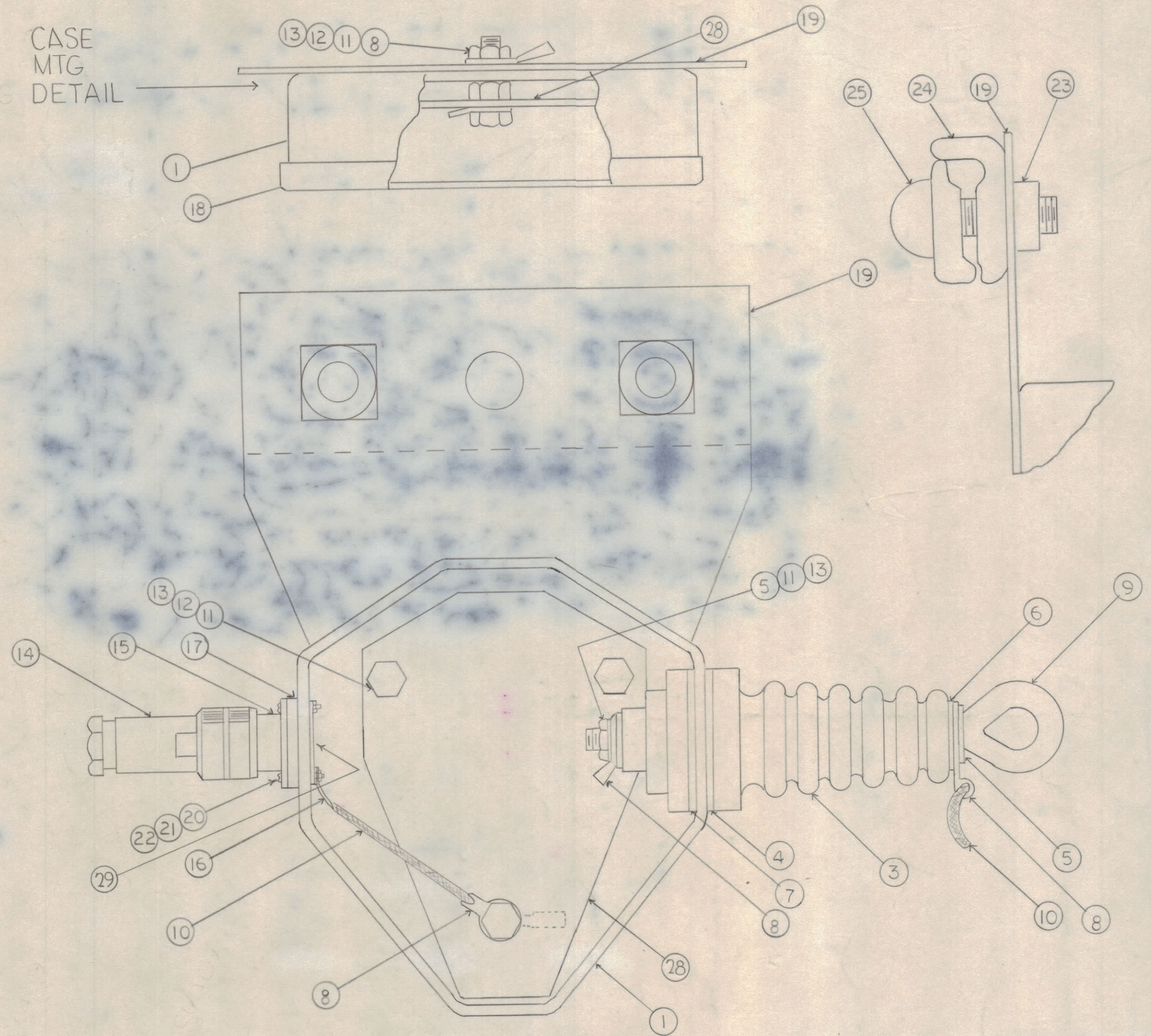


REVISIONS							
ZONE	SYM	DESCRIPTION	DATE	E.M.N. NO.	DRAFT	CHKD	APPD
	X1	IT 2 (MS1302) DELETED, IT 28, 29 & 30 ADDED	8/21/66	-	Jc		
	Ø	ORIGINAL RELEASE FOR PRODUCTION	8/21/66	-	Jc		

CASE  
MTG  
DETAIL



\* SUPPLIED AS LOOSE ITEM FOR USE BY CUSTOMER.

QTY	SYM	DESCRIPTION	REMARKS
	31		
X	30	GL106	COMPOUND, POTTING
1	29	MS1302-3	PLATE, PLUG
1	28	MS1302-2	PLATE, XFMR MTG.
1	27	NP 222-1	NAME PLATE
X	26	BS-100	SOLDER, SOFT
2	25	SUPPLIED W/ CUI24	BOLT
1	24	CUI24	CLAMP SUSPENSION
2	23	SUPPLIED W/ CUI24	NUT
4	22	NTHG440BN8	NUT, HEX
4	21	LWEC4MRN	WASHER, LK, EXT
4	20	SCBPC440BN8	SCREW, MACHINE
1	19	MS 790	CASE MTG PLATE
1	18	PM 231	COVER
1	17	GA 106	GASKET
1	16	TE 104	TERM, LUG
1	15	UG-58A/U	RECEPTACLE
1	14	UG-21B/U	PLUG
4	13	LWS25MRN	WASHER, SPLIT
3	12	SCHH2520BN16	SCREW, MACHINE
7	11	NTH 2520BN14	NUT, HEX
10"	10	WL103 2	WIRE BRAID
1	9	SC 149	BOLT, EYE
4	8	TE158-31136	TERM LUG
1	7	GA 115	GASKET NEOPRENE
1	6	GA114	" "
1	5	SUPPLIED W/ NS107	WASHER FLAT
1	4	" " "	GASKET, CORK
1	3	NS 107	INSULATOR, FEEDTHRU
1	2	DELETED	
1	1	PM 390	CASE

MODEL DAC-12

REQ'D	ITEM	PART NUMBER	DESCRIPTION	SYMBOL
HAY LIST OF MATERIAL				
MATERIAL		THE TECHNICAL MATERIEL CORP. MAMARONECK, NEW YORK		
FINISH		ASSY, DIPOLE ANT. COUPLER		
UNLESS OTHERWISE SPECIFIED DIMENSIONS ARE IN INCHES AND INCLUDE CHEMICALLY APPLIED OR PLATED FINISHES		DRAWN KORFINE CHECKED QCB	DATE 8/21/66 DATE 8/25/66	FINAL APPROVAL [Signature] DATE 8/21/66
DECIMALS .X ± .05 .XX ± .01 .XXX ± .005	FRACTIONS ± 1/64 ANGLES ± 0° 30'	ELECT. DES. MECH. DES.	DATE DATE DATE	A4486 SHEET REV. LTR.

M/L 8-26-66