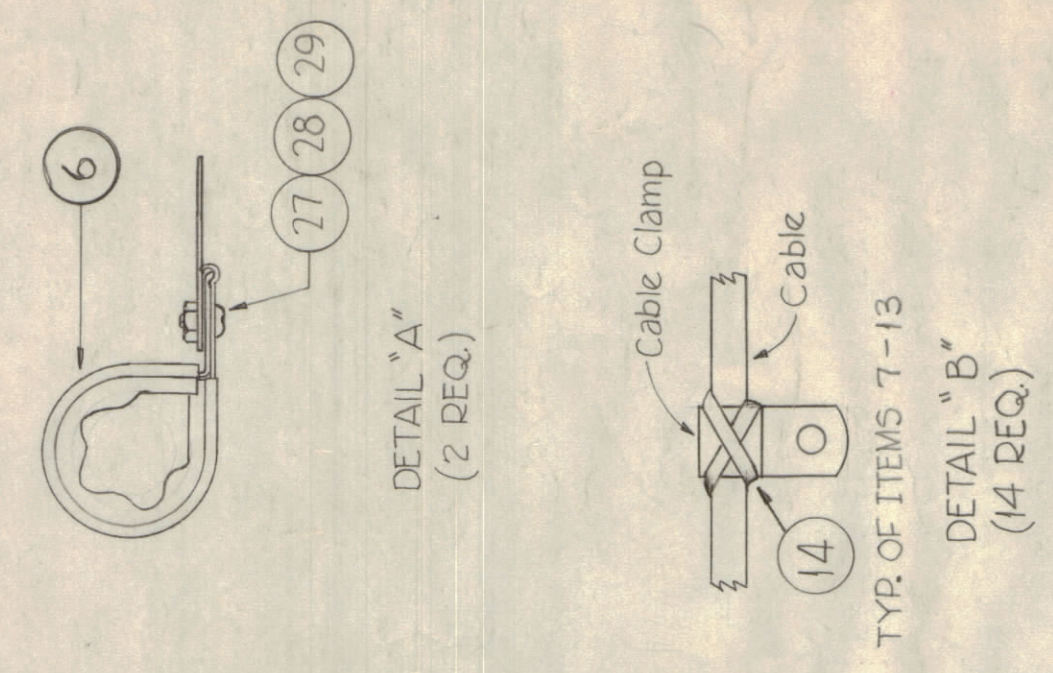
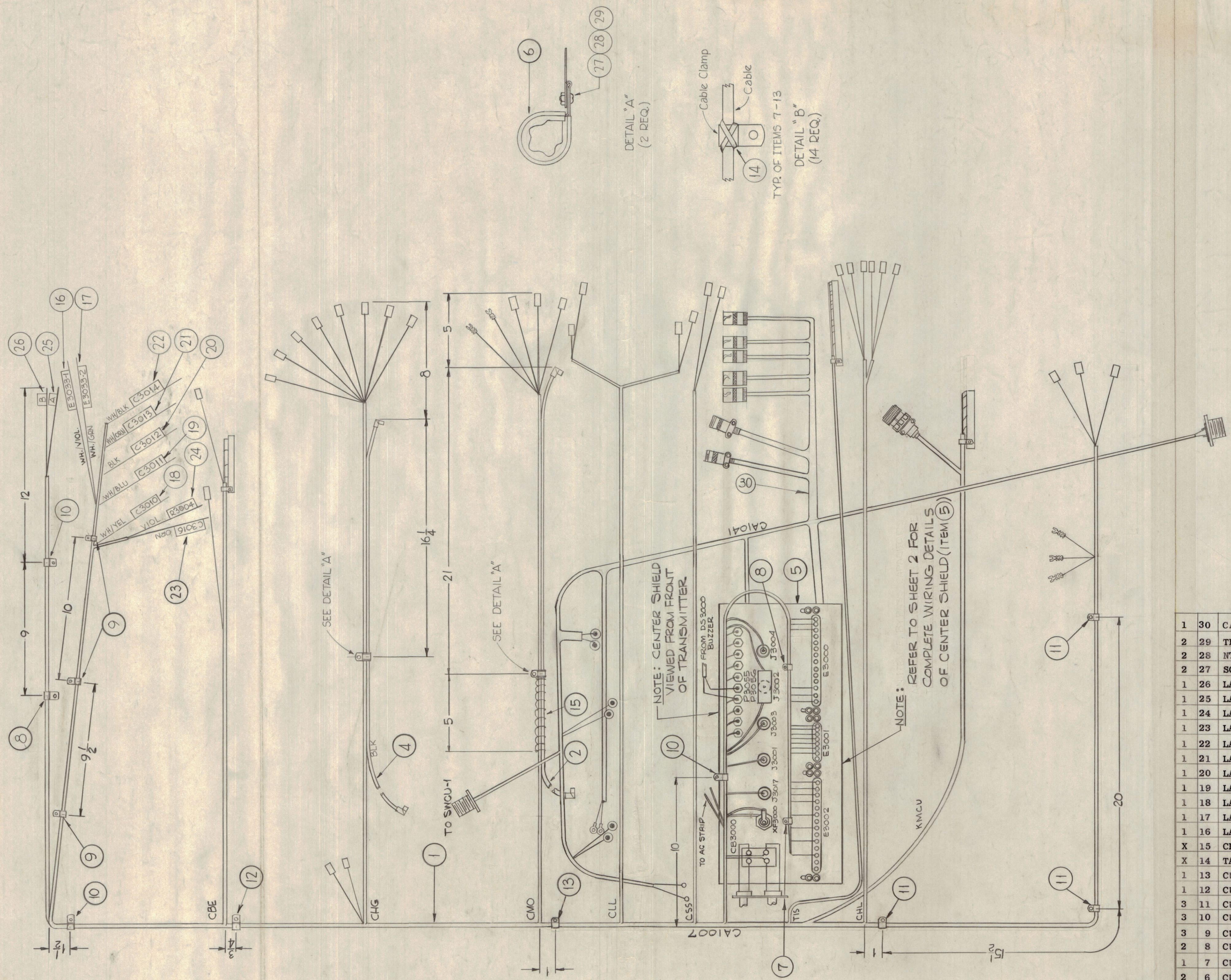


NOTICE TO PERSONS RECEIVING THIS DRAWING

THE TECHNICAL MATERIEL CORPORATION claims proprietary right in the material disclosed herein. This drawing is issued in confidence for engineering information only and may not be reproduced or used to manufacture anything shown herein without permission from THE TECHNICAL MATERIEL CORPORATION to the user. This drawing is loaned for mutual assistance and is subject to recall at any time.

Property of:
THE TECHNICAL MATERIEL CORPORATION
MAMARONECK, NEW YORK



REQ. ITEM	PART NO.	DESCRIPTION	SYMBOL
1	30	CA-1041	CABLE ASS'Y, AUX TO MAIN FR.
2	29	TR-104-3	TERMINAL, LOCKING
2	28	NTH0832BN10	NUT, HEX
2	27	SCBP0832BN8	SCREW, MACHINE PHILLIPS
1	26	LA-105-11-B	SLEEVEING, LETTERED, WIRE MARKER
1	25	LA-105-11-A	SLEEVEING, LETTERED, WIRE MARKER
1	24	LA-105-8-R3004	SLEEVEING, LETTERED, WIRE MARKER
1	23	LA-105-8-C3016	SLEEVEING, LETTERED, WIRE MARKER
1	22	LA-105-8-C3014	SLEEVEING, LETTERED, WIRE MARKER
1	21	LA-105-8-C3013	SLEEVEING, LETTERED, WIRE MARKER
1	20	LA-105-8-C3012	SLEEVEING, LETTERED, WIRE MARKER
1	19	LA-105-8-C3011	SLEEVEING, LETTERED, WIRE MARKER
1	18	LA-105-8-C3010	SLEEVEING, LETTERED, WIRE MARKER
1	17	LA-105-8-E3033-2	SLEEVEING, LETTERED, WIRE MARKER
1	16	LA-105-8-E3033-1	SLEEVEING, LETTERED, WIRE MARKER
X	15	CD-101-1-MW	CORD, LACING
X	14	TA-105-2	TAPE, MASKING
1	13	CU-102-12	CLAMP, CABLE
1	12	CU-102-7	CLAMP, CABLE
3	11	CU-102-6	CLAMP, CABLE
3	10	CU-102-5	CLAMP, CABLE
3	9	CU-102-4	CLAMP, CABLE
2	8	CU-102-2	CLAMP, CABLE
1	7	CU-102-1	CLAMP, CABLE
2	6	CA-131-5	CLAMP, CABLE
1	5	A4117	CENTER SHIELD ASSEMBLY
1	4	CA-576-6.00	CABLE, POWER
	3	DELETED	
1	2	CA-551-6	CABLE, POWER
1	1	CA-1007	CABLE ASSEMBLY AUXILIARY MAIN FRAME

ITEM 5 WAS A4473	9-6-68	19028	GDL	FB			
ORIGINAL RELEASE FOR PRODUCTION	9/20/67		CY				
EXPERIMENTAL RELEASE (SEE SHEET 2)	6-19-67		HCB				
SYM	ZONE	DESCRIPTION	DATE	CH. NO.	DRAFTS	CHECKER	ENG. APP.
UNLESS OTHERWISE SPECIFIED:							
DIMENSIONS ARE IN INCHES			SCALE				
TOLERANCES ON FRACTIONS ± 1/64			MAXIMUM ALLOWABLE TOLERANCES HAVE BEEN DETERMINED AND ANY DEVIATIONS WILL BE CAUSE FOR REJECTION. REMOVE ALL BURRS & SHARP EDGES				
DECIMALS ± .005			ANGLES ± 1/2°				

1	KIT-12B-1			6-19-67
REQ. PER UNIT	MODEL	SECTION	ASSY. NO.	DATE
USED ON				

TYPE & TEMPER	HEAT TREAT. SPEC.	FINISH & SPEC. NO.	ELEC. DES. APP.	MECH. DES. APP.	SHEET OF 2
					A4473
THE TECHNICAL MATERIEL CORP. MAMARONECK, NEW YORK					DEFIANCE NO. 1000

A4473 A