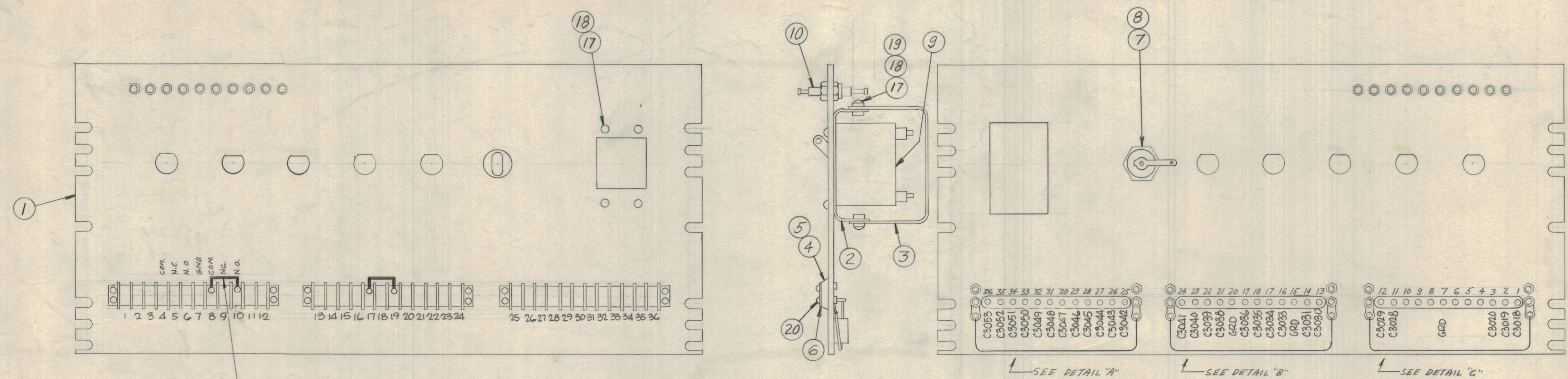
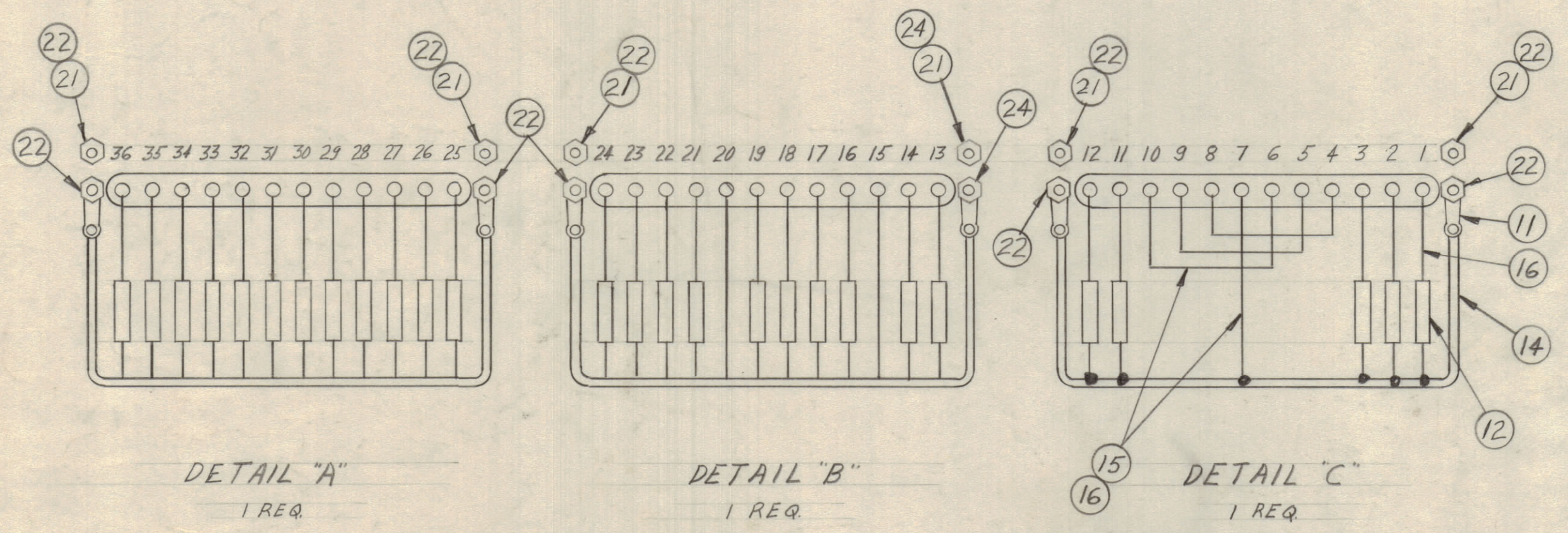


REVISIONS							
ZONE	SYM	DESCRIPTION	DATE	E.M.N. NO.	DRAFT	CHKD	APPD
	X1	ADDED ITEM 24, DELETED 22A, ITEM 22	4/30/66		PM		
	X2	ADDED DESCRIPTIONS TO LIST OF MAT'L.	8/26/66		MLC		
	X3	ADD IT 13 TO TERM 17 & 19 QUANT 22 WAS 12	5/10/66		Jc		
	Ø	ORIGINAL RELEASE FOR PRODUCTION	5/11/66		CV		file



13 BETWEEN TERM. 8 & 10 & TERM 17 & 19

← SEE DETAIL "A" ← SEE DETAIL "B" ← SEE DETAIL "C"



REQ'D.	ITEM	PART NUMBER	DESCRIPTION	SYMBOL
		30		
		29		
		28		
		27		
		26		
		25		
	24	TE102-2	TERM., STUD-INS	
X	23	BS100	SOLDER, TIN ALLOY	
10	22	NH0440 BN8	NUT, FLN, HEX	
6	21	LWE04 MRN	WASH., LOCK, EXT	
10	20	SCBP0440 BN10	SCREEN, MACHINE	
4	19	FW06 HBN	WASH., FLAT	
8	18	LWE06 HRN	WASH., LOCK, EXT	
8	17	SCBP0632 BN6	SCREEN, MACHINE	
X	16	PX104-1-034	INS SLEEVING	
X	15	WL100-6	WIRE, ELEC, BUSS	
X	14	WL100-4	WIRE, ELEC, BUSS	
2	13	CA408-32-2.00	LEAD, ELEC	
27	12	CH208102K	CAP., FIXED, MICA	
6	11	TE104-1	TERM., LUG-LKG	
10	10	TE114-2	TERM., FEEDTHRU, INS	
1	9	SW251-2	CKTBLK-DPST	CB3000
1	8	FU102-1	FUSE, CTG, 1A	F3000
1	7	FH104-3	FUSEHOLDER, IND	XF3000
6	6	MS154-1	PLATE, MTG, TERM. BD	
3	5	PX337-12	INS, TERM. BD	
3	4	TH100-12	TERM. BD-BARRIER	
1	3	MS4425	SHIELD, ELEC, PROTECT	
1	2	MS4424	BRACKET, SHIELD, MTG	
1	1	LD1793/MS4395	PANEL CENTER	

BODETTI LIST OF MATERIAL			
THE TECHNICAL MATERIEL CORP. MAMARONECK, NEW YORK			
TITLE FINAL ASSY, CENTER SHIELD			
UNLESS OTHERWISE SPECIFIED DIMENSIONS ARE IN INCHES AND INCLUDE CHEMICALLY APPLIED OR PLATED FINISHES	DRAWN JH	DATE 7/14/66	FINAL APPROVAL JG
CHECKED JH	DATE 7/13/66	ELECT. DES. JG	DATE 7/13/66
MECH. DES. JG	DATE 7/13/66	SHEET 1	REV. LTR. Ø

QTY/UNIT	MODEL USED ON	ASS'Y. NO.
1	TBTE104/AX563	

NOTES

THE CONTENTS OF THIS DRAWING ARE THE EXCLUSIVE PROPERTY OF THE TECHNICAL MATERIEL CORP. ITS UNAUTHORIZED USE OR REPRODUCTION IN WHOLE OR IN PART IS STRICTLY FORBIDDEN.

DECIMALS ± .05
FRACTIONS ± 1/64
ANGLES ± 0° 30'

TOLERANCES ± .01
± .005

A4252