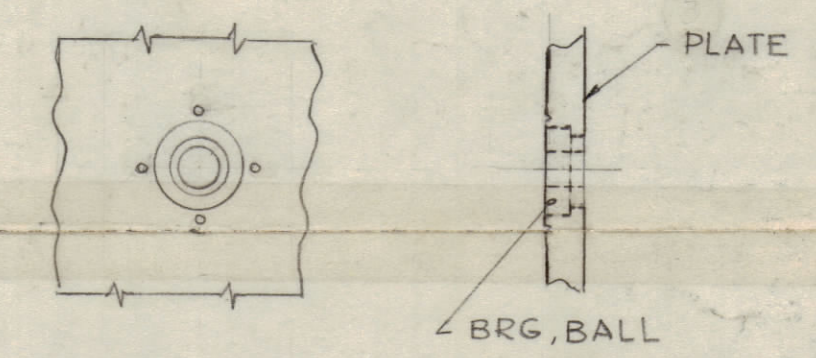
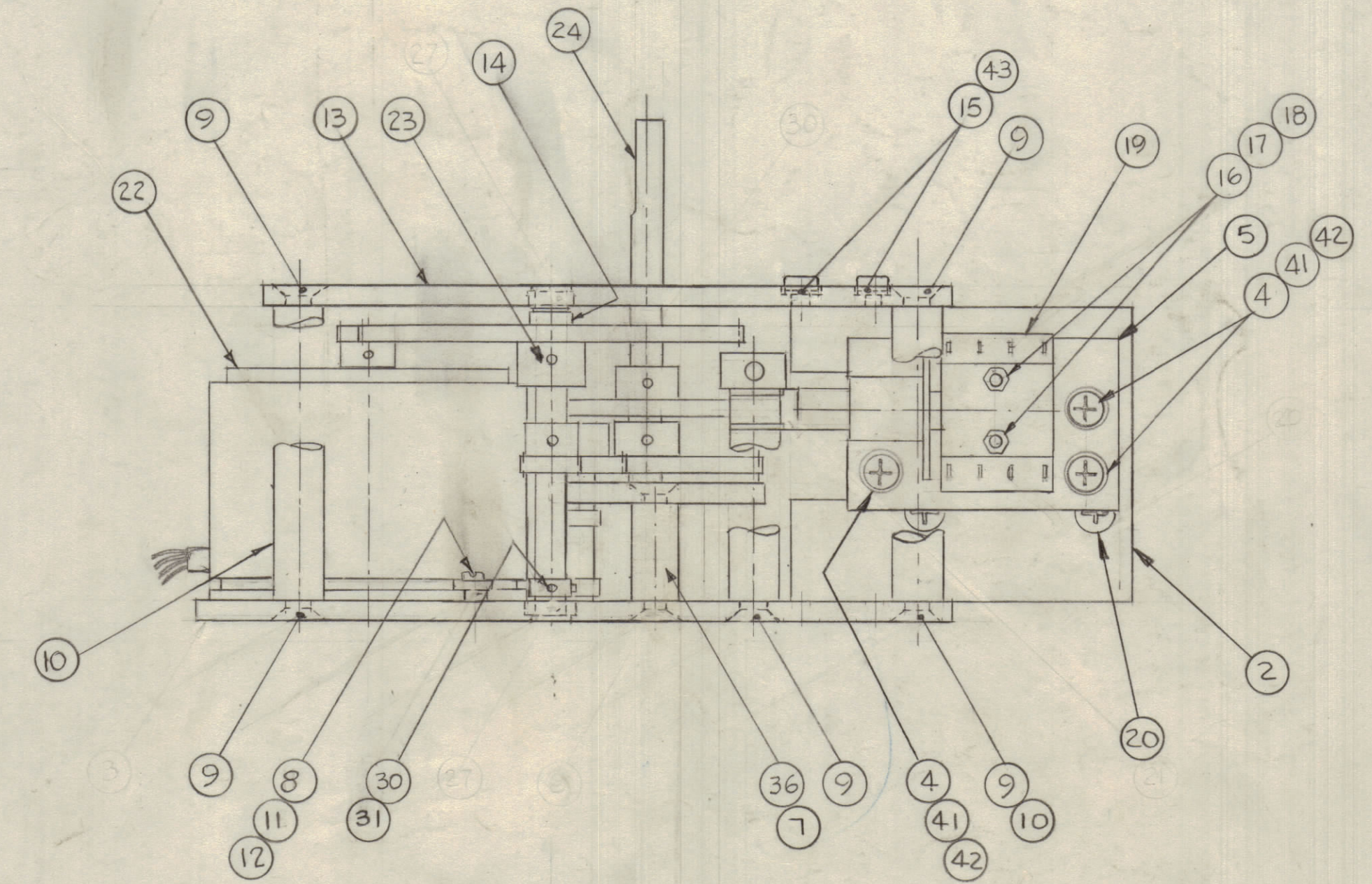
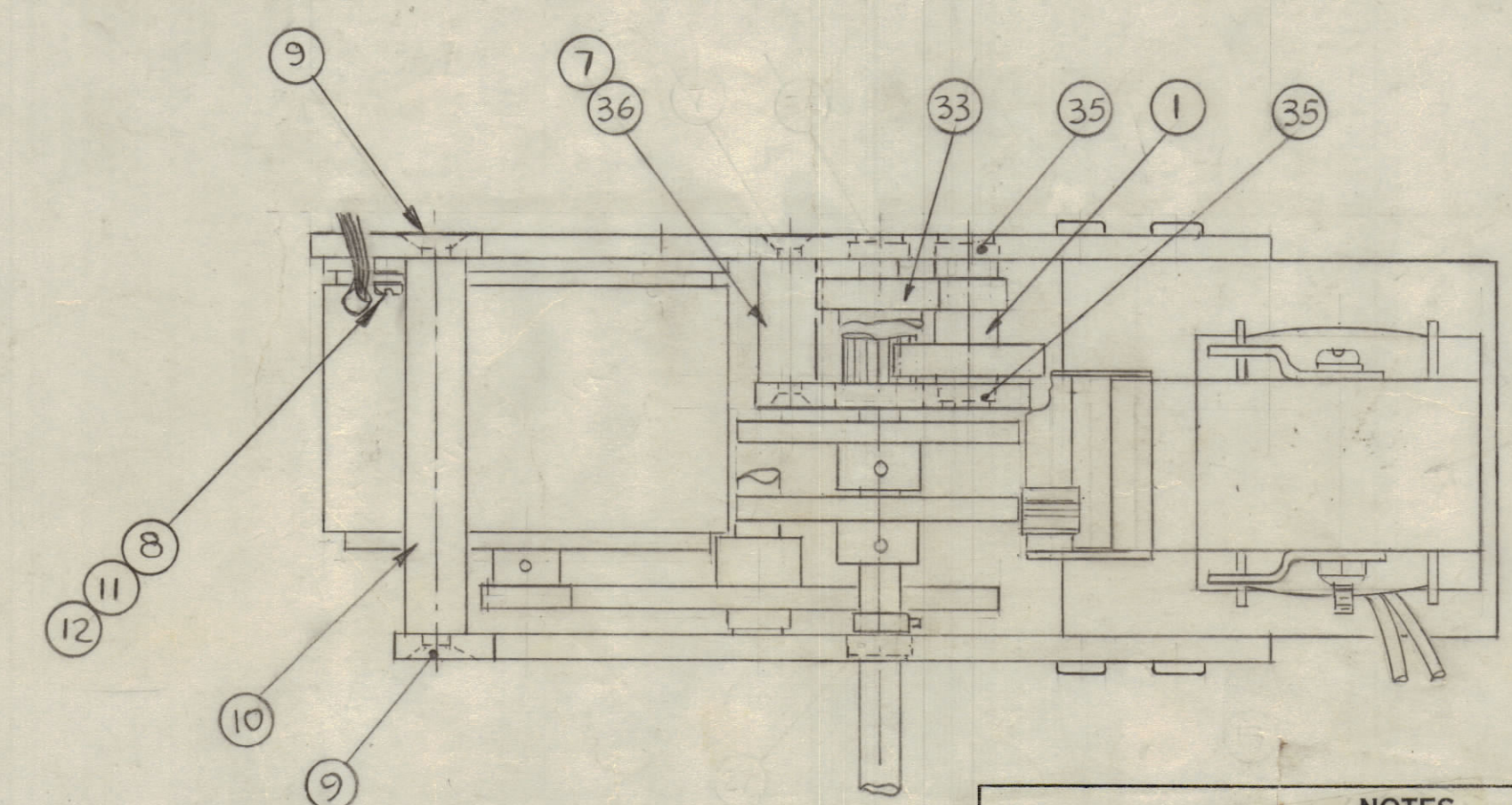
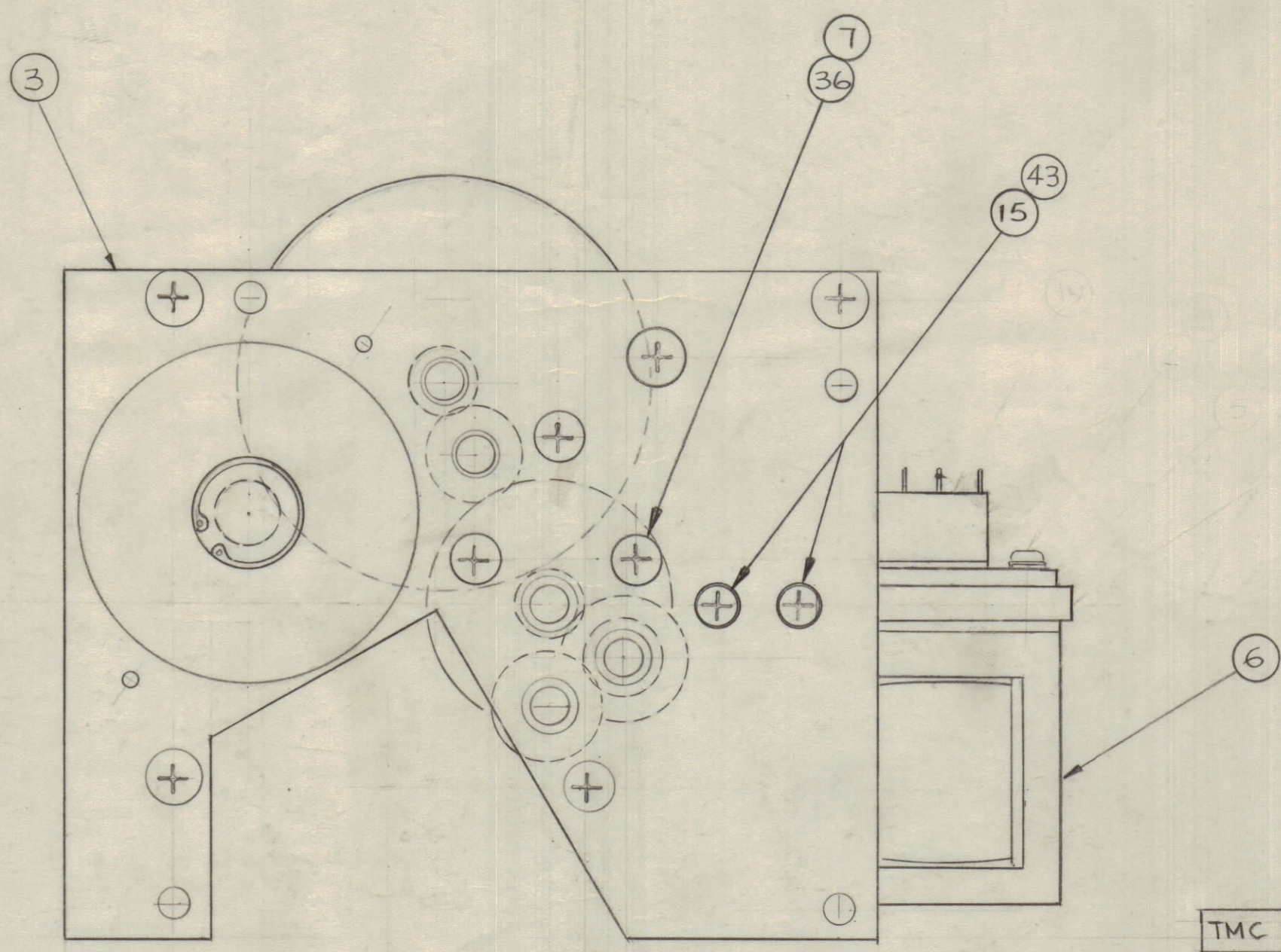
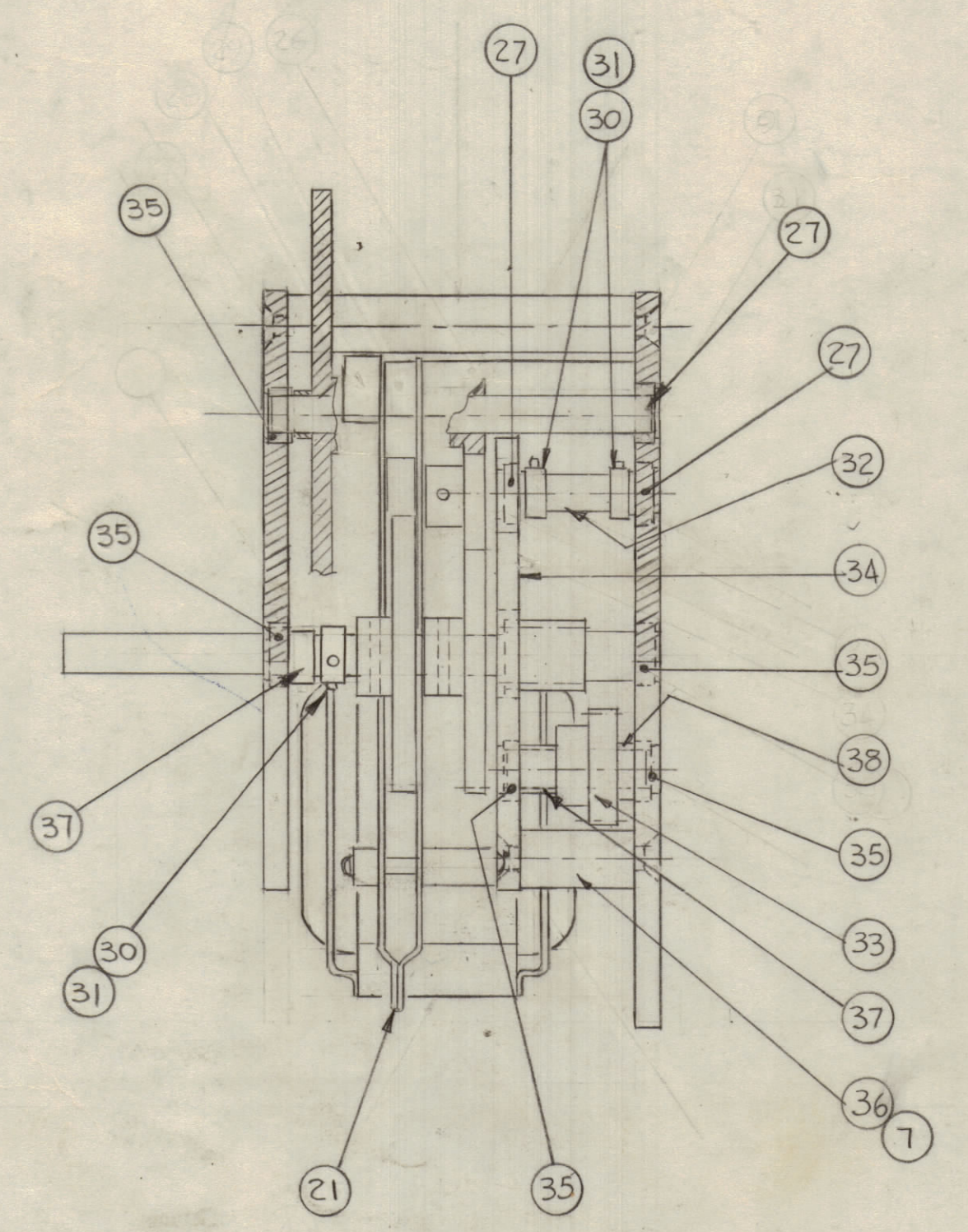


REVISIONS						
ZONE	SYM	DESCRIPTION	DATE	E.M.N. NO.	DRAFT	CHKD
X1		COMPLETELY REVISED.	4/8/65		JL	
X2		NOTES ADDED	4/9/65		GDL	
Ø		ORIGINAL RELEASE FOR PRODUCTION	4/14/65		GDL	
A		IT-14 WAS "SCRF.", IT-17 WAS "LWEO4LSS", 2 "REQ'D" EDLS ON L. END OF B/M ADD. & ALL 3 COLS. LABELED; P/N CHART NO. MODELS: CHG-3, HFR-2B, & HFR-2C ADDED.	5/7/65	14041	RL	
B		ADD IT-43 & CALLOUTS. IT-15 WAS SCFP0632SS8	5-20-64	16872	RME	



- NOTES —
- 1- PRESS (2) OF ITEM 27 AND (3) OF ITEM 35 INTO ITEM 3 AND STAKE LIGHTLY AS SHOWN.
  - 2- PRESS (1) OF ITEM 27 AND (2) OF ITEM 35 INTO ITEM 34 AND STAKE LIGHTLY AS SHOWN.
  - 3- PRESS (2) OF ITEM 35 INTO ITEM 13 AND STAKE LIGHTLY AS SHOWN.
  - 4- ASSEMBLE ITEM 21 TO ARMATURE OF ITEM 6.



QTY. FOR A4168-3 (HFR-2B MANUAL)	QTY. FOR A4168-2 (CHG-3 MANUAL)	QTY. FOR A4168-1 (AUTO)	QTY.	PART NUMBER	DESCRIPTION	SYMBOL		
			4	43	LWS06MSS	WASHER, LOCK SPRING TYPE		
			OMIT	3	42	FW06HBN	WASHER, FLAT	
			OMIT	3	41	LW06MSS	WASHER, LOCK, EXTERNAL	
				40	DELETED			
			X	X	39	LUI06	GREASE, ACFT/INST	
			1	1	38	TE117-67	SPACER, SLEEVE	
			2	2	37	TE117-65	SPACER, SLEEVE	
			4	4	36	TE0832SS9IR	POST, ELEC-MECH	
			6	6	35	BB126-15	BRG, BALL, ANNL	
			1	1	34	MS4337	PLATE, IDLER	
			1	1	33	A4173	GEAR, ASSEMBLY	
			OMIT	OMIT	1	32	A4171	GEAR, ASSEMBLY
			2	2	8	31	SLIF0440SS2	SET SCREW
			1	1	4	30	PM1062-3	HUB
					29	DELETED		
					28	DELETED		
			OMIT	OMIT	3	27	BB126-6	BRG, BALL, ANNL
					26	DELETED		
					25	DELETED		
			1	1	1	24	A4174	GEAR, ASSEMBLY
			OMIT	OMIT	1	23	A4172	GEAR, ASSEMBLY
			OMIT	OMIT	1	22	MO122-2	MOTOR, AC
			1	1	1	21	A5501	DETENT ARM ASSY
			OMIT	OMIT	4	20	SCFP0632SS6	SCREW, MACHINE
			OMIT	1	1	19	SW347	SWITCH, PUSH-DPDT
			OMIT	2	2	18	NTH0440SS8	NUT, PLAIN, HEX
			OMIT	2	2	17	LWEO4MSS	WASHER, LOCK, EXTERNAL
			OMIT	2	2	16	SCFP0440SS13	SCREW, MACHINE
			4	4	4	15	SCFP0632SS8	SCREW, MACHINE
			OMIT	OMIT	1	14	PM1062-7	HUB
			1	1	1	13	MS3701	PLATE, TOP, TURRET
			OMIT	OMIT	2	12	LWS04MSS	WASHER, LOCK, SPLIT
			OMIT	OMIT	2	11	SCBP0440SS5	SCREW, MACHINE
			3	3	3	10	TE1032SS78R	POST, ELEC-MECH
			7	7	7	9	SCFP1032SS8	SCREW, MACHINE
			OMIT	OMIT	2	8	CUI55-2	RETAINER, MOTOR
			8	8	8	7	SCFP0832SS7	SCREW, MACHINE
			OMIT	OMIT	1	6	SZ101	SOLENOID, ELEC
			1	1	1	5	MS3699	PLATE, SWITCH
			3	3	3	4	SCBP0632SS6	SCREW, MACHINE
			1	1	1	3	MS4338	PLATE, BOTTOM, TURRET
			1	1	1	2	MS3700	BRACKET, SOLENOID
			1	1	1	1	GR218	GEARSHAFT-SPUR

TMC P/N	TYPE	PICTORIAL
A4168-1	CHGR-3 HFR-2B AUTOMATIC	AS SHOWN
A4168-2	CHG-3 MANUAL	MAKE OMISSIONS AND QTY. CHGS. AS SHOWN IN CHART.
A4168-3	HFR-2B MANUAL	MAKE OMISSIONS AND QTY. CHGS. AS SHOWN IN CHART.

1	HFR-2B	
1	HFR-2B	
1	CHG-3	
1	CHGR-3	AX457

SCALE	1:1
MODEL USED ON	A
ASSY. NO.	

J. ANGER LIST OF MATERIAL

MATERIAL #

FINISH #

UNLESS OTHERWISE SPECIFIED DIMENSIONS ARE IN INCHES AND INCLUDE CHEMICALLY APPLIED OR PLATED FINISHES

DECIMALS: X ± .05, XX ± .01, XXX ± .005

TOLERANCES: ± 1/64 ANGLES ± 0° 30'

THE CONTENTS OF THIS DRAWING ARE THE EXCLUSIVE PROPERTY OF THE TECHNICAL MATERIEL CORP. ITS UNAUTHORIZED USE OR REPRODUCTION IN WHOLE OR IN PART IS STRICTLY FORBIDDEN.

THE TECHNICAL MATERIEL CORP. MAMARONECK, NEW YORK

TITLE: BAND SWITCH SUBASSY

DRAWN: G.D.L. DATE: 2-5-65

CHECKED: J.C.B. DATE: 4/14/65

ELECT. DES. DATE: 4/14/65

MECH. DES. DATE: 4/14/65

REV. LTR. A4168 B