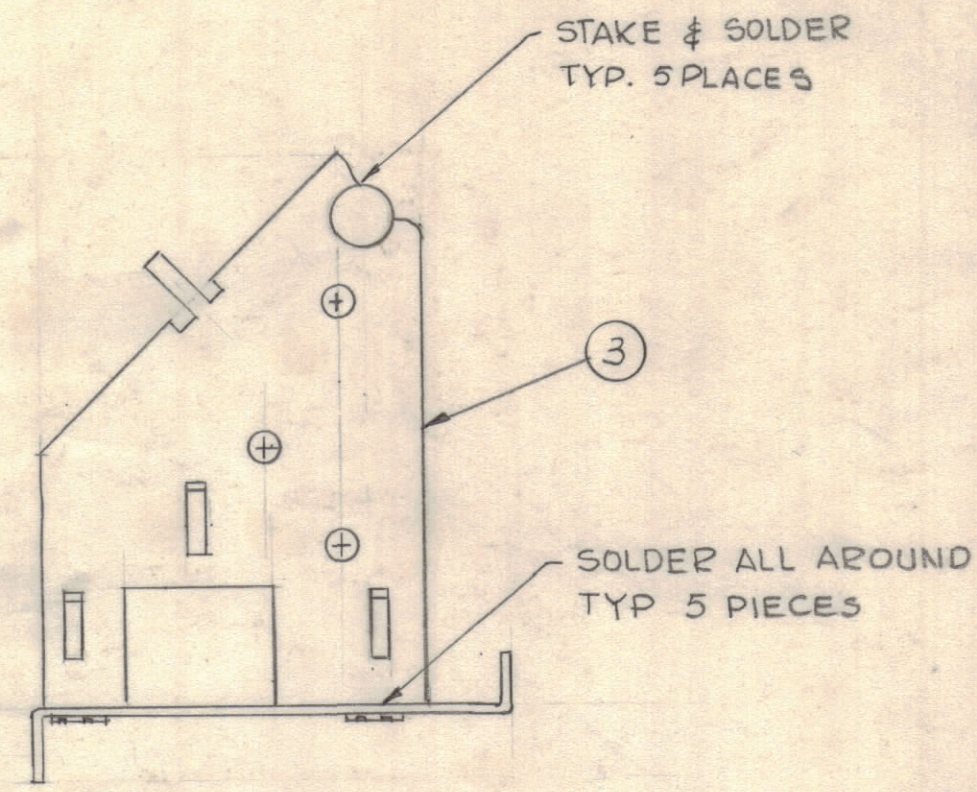
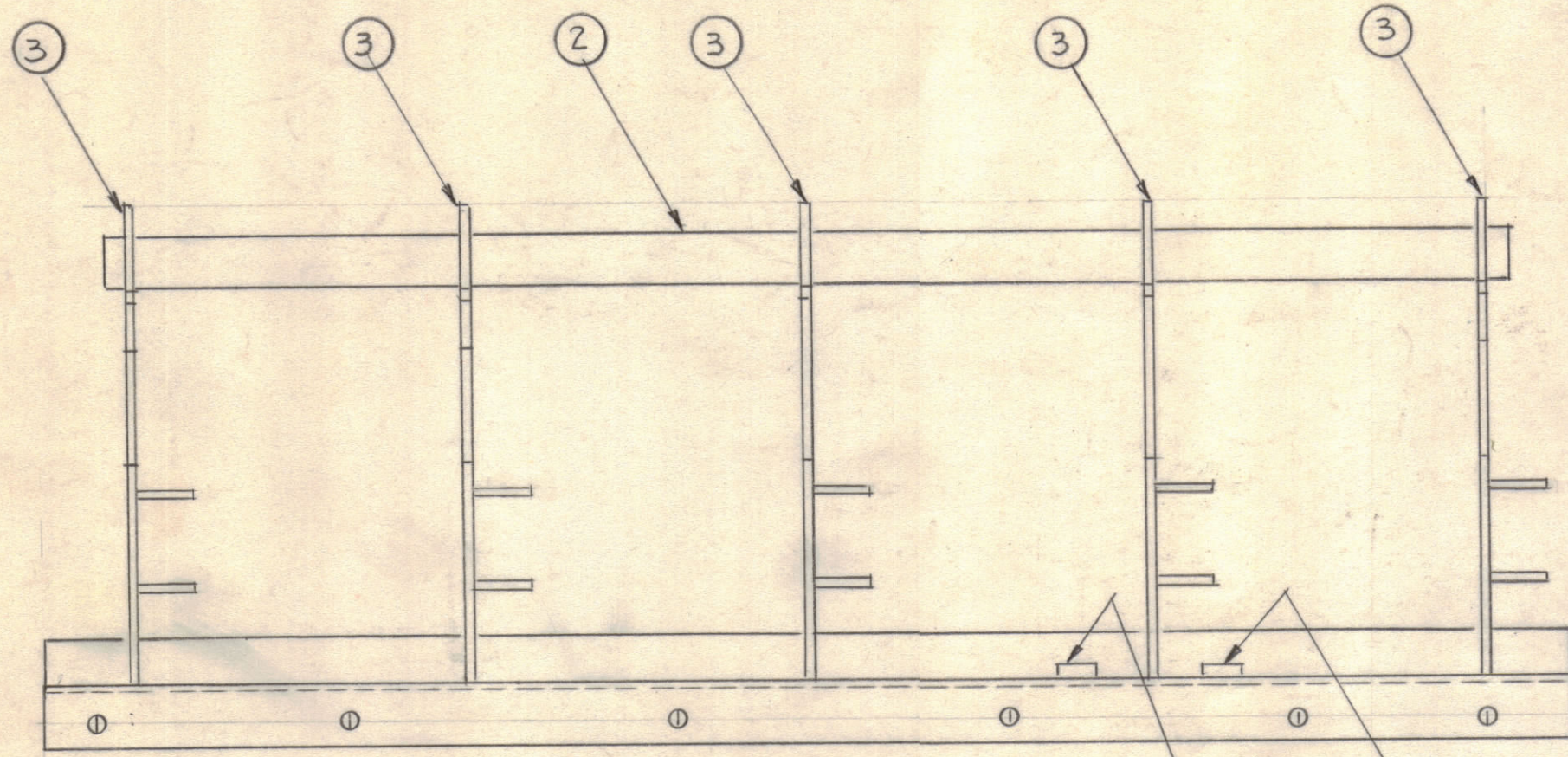
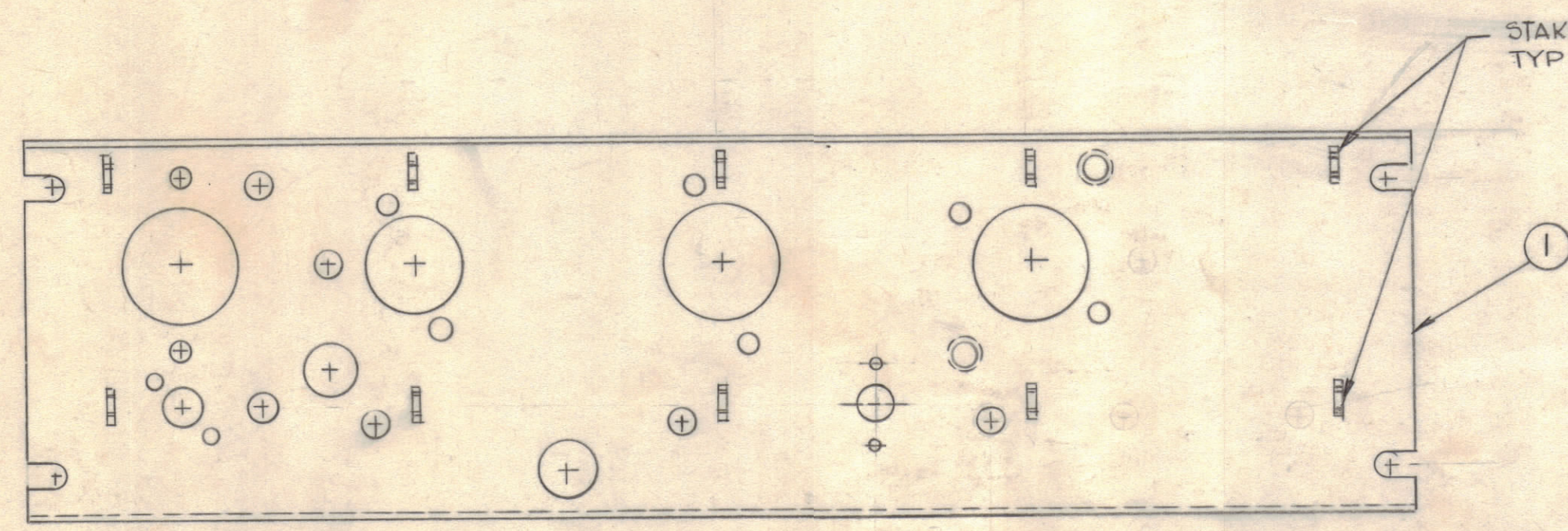


REVISIONS							
ZONE	SYM	DESCRIPTION	DATE	E.M.N. NO.	DRAFT	CHKD	APPD
	X1	ON ITEM (1) 3 HOLES DELETED (PICTORIAL CLAR)	3-24-65		G.D.L.	MM	
	Ø	ORIGINAL RELEASE FOR PRODUCTION	3-24-65		G.D.L.		
C5	A	HOLE CONFIGURATION ADDED TO AGREEMENT/MS DWG.	9/24/65	19876	M.V.	JCF	MM



SEE NOTE #3



NOTE :
 1- STAKE & SOLDER AS SHOWN
 2- 3345 SILVER PLATE
 3- ITEM 4 TO BE INSTALLED AFTER PLATING
 4- SILK SCREEN AS PER LD1785 (AFTER PLATING)

NOTES

1	CHG-3/CHGR-3	A2945
Q'TY./UNIT	MODEL USED ON	ASS'Y. NO.
SCALE 1:1	CODE A	
THE CONTENTS OF THIS DRAWING ARE THE EXCLUSIVE PROPERTY OF THE TECHNICAL MATERIEL CORP. ITS UNAUTHORIZED USE OR REPRODUCTION IN WHOLE OR IN PART IS STRICTLY FORBIDDEN.		

REF: LD1785

REQ'D.	ITEM	PART NUMBER	DESCRIPTION	SYMBOL
X	5	BS 100	SOLDER, TIN ALLOY	
	2	NT129-440-3	NUT PLAIN, SPLINE	
	5	MS 2893	BAFFLE	
	1	PM 748	SPACER, TIE ROD	
	1	MS 3740	CHASSIS, MAIN (ELEC EQUIP. RF)	

J. ANGER		LIST OF MATERIAL	
MATERIAL		THE TECHNICAL MATERIEL CORP. MAMARONECK, NEW YORK	
FINISH SEE NOTE #2		TITLE CHASSIS, RF, ASSY	
DRAWN G.D.L.	DATE 3-29-65	FINAL APPROVAL <i>[Signature]</i>	DATE
CHECKED <i>[Signature]</i>	DATE 3-29-65		
ELECT. DES. <i>[Signature]</i>	DATE 3/24/65	A 4167	A
MECH. DES.	DATE	SHEET	REV. LTR.

A 4167 A