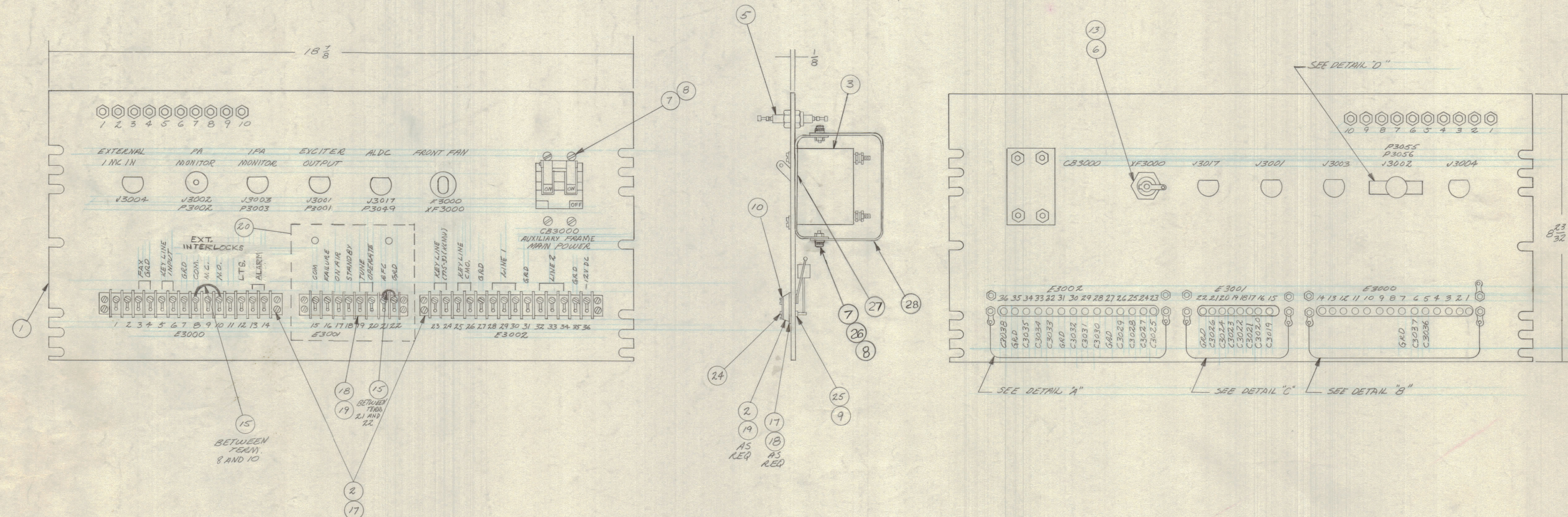
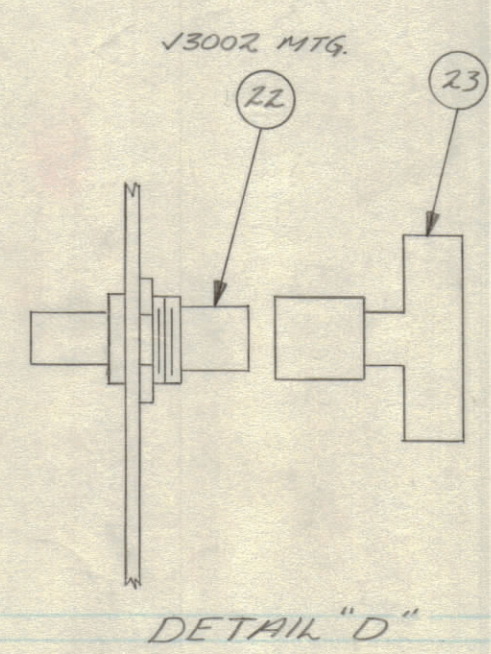
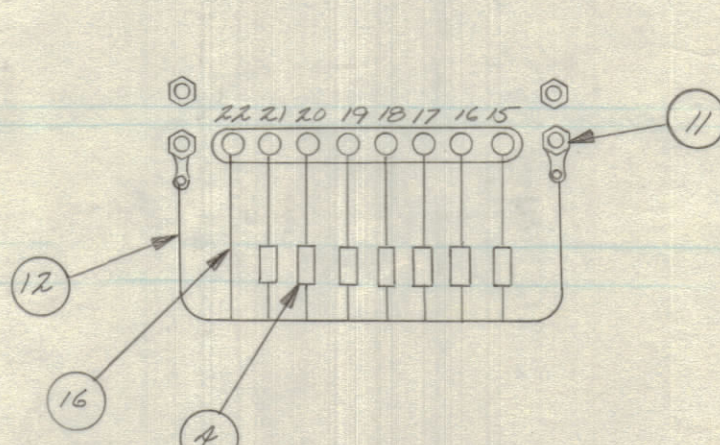
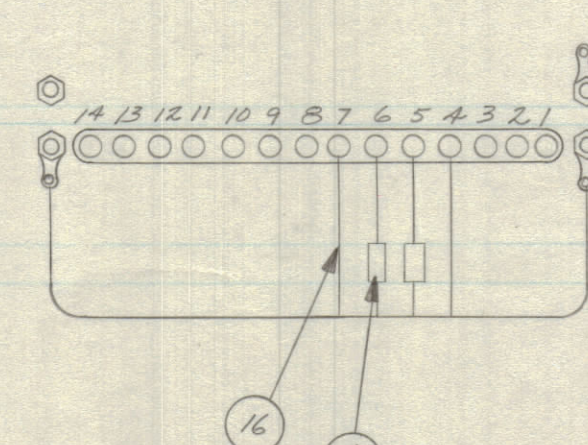
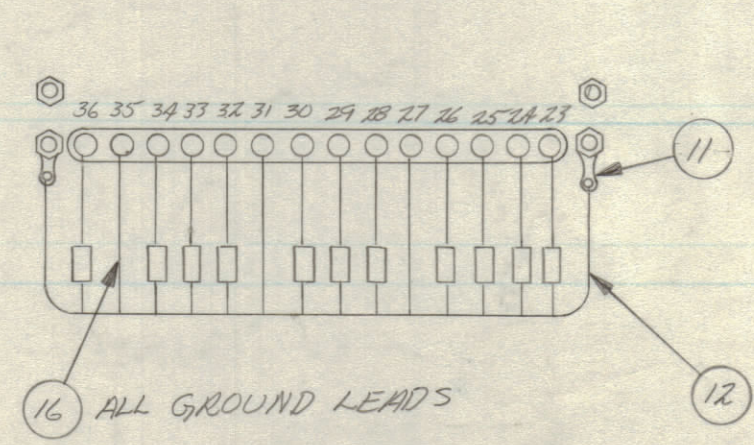


REVISIONS						
ZONE	SYM	DESCRIPTION	DATE	E.M.N. NO.	DRAFT	CHKD
	X1	ITEMS 28, 27, 26 ADDED, ITEMS 21, 6, 7, 17, REVISED	5-3-64		CTJ	
		ITEM 21 WAS SCB P0632 B1N6				
		ORIGINAL RELEASE FOR PRODUCTION				
	A	IT. 4 WAS CM20B102K, LD REF. ADDED TO IT. 20	3-14-67	17979		



DANGER  
HIGH VOLTAGE



TMC PART NO.	ITEM G	FIRST USED ON
A4117	FU102-1	AX558, GPT-10K-AT
A4117-2	FU102-1.5	AX575, GPT-10K-RA-B

REQ'D.	ITEM	PART NUMBER	DESCRIPTION	SYMBOL
1	28	MS4425	SHLD, CKT BLR	
1	27	MS4424	BRKT, SHLD MTG	
4	26	FW06HEN	WASHER, FLAT	
5	25	LWEO4MRN	LOCKWASHER, EXTERNAL	
12	24	SCBP0440B10	SCREW, MACHINE	
1	23	UG274YU	ADAPTER, RF BNC "T"	
1	22	UG492*/U	ADAPTER, RF BNC, FEEDTHRU	
	21	DELETED		
1	20	LD17A5/MS4267	PLATE, COVER	
1	19	TM100-B	TERM. STRIP, BARRIER TYPE	E3001
1	18	PX-337-B	INSULATOR, TERM. STRIP (8 TERM)	
2	17	PX-337-1A	INSULATOR, TERM. STRIP (14 TERM)	
X	16	WL-103-2	SHIELD, FLEXIBLE 1/8"	
2	15	CA-409-32-2.00	CABLE ASSY JUMPER	
X	14	BS-100	SOLDER, SOFT	
1	13	FH-104-3	HOLDER, FUSE	
X	12	WL-100-4	WIRE-BUSS-BAR	
7	11	TE-104-1	TERMINAL, LOCKING	
6	10	MS-159-1	STRADDLE, PLATE	
12	9	NT10440B1B	NUT, HEX	
10	8	LWEO6HRN	LOCKWASHER, EXTERNAL	
10	7	SCBP0632B1N6	SCREW, MACHINE	
1	6	SEE CHART	FUSE	F3000
10	5	TE-114-2	TERMINAL, FEED THRU	
20	4	CM20F102G03	CAPACITOR, FIXED 1000A	
1	3	SW251-2	BRAKER, CIRCUIT	CB3000
2	2	TM-100-14	TERMINAL STRIP, BARRIER TYPE	E3002 E3002
1	1	LD17A1/MS4258	LETTERING, FRONT PANEL	

BUDGET		LIST OF MATERIAL	
MATERIAL		THE TECHNICAL MATERIEL CORP. MAMARONECK, NEW YORK	
FINISH		TITLE FINAL ASS'Y, CENTER SHIELD	
SCALE		DRAWN: DUSA IN SEC	
THE CONTENTS OF THIS DRAWING ARE THE EXCLUSIVE PROPERTY OF THE TECHNICAL MATERIEL CORP. ITS UNAUTHORIZED USE OR REPRODUCTION IN WHOLE OR IN PART IS STRICTLY FORBIDDEN.		DATE: 12/1/64	
DECIMALS: .X ± .05, .XX ± .01, .XXX ± .005		DATE: 12/1/64	
FRACTIONS: 1/64, ANGLES: ± 0° 30'		DATE: 12/1/64	
TOLERANCES		ELECT. DES. DATE: 12/1/64	
		MECH. DES. DATE: 12/1/64	
		SHEET: A4117	
		REV. LTR. A	

NOTES

A4117