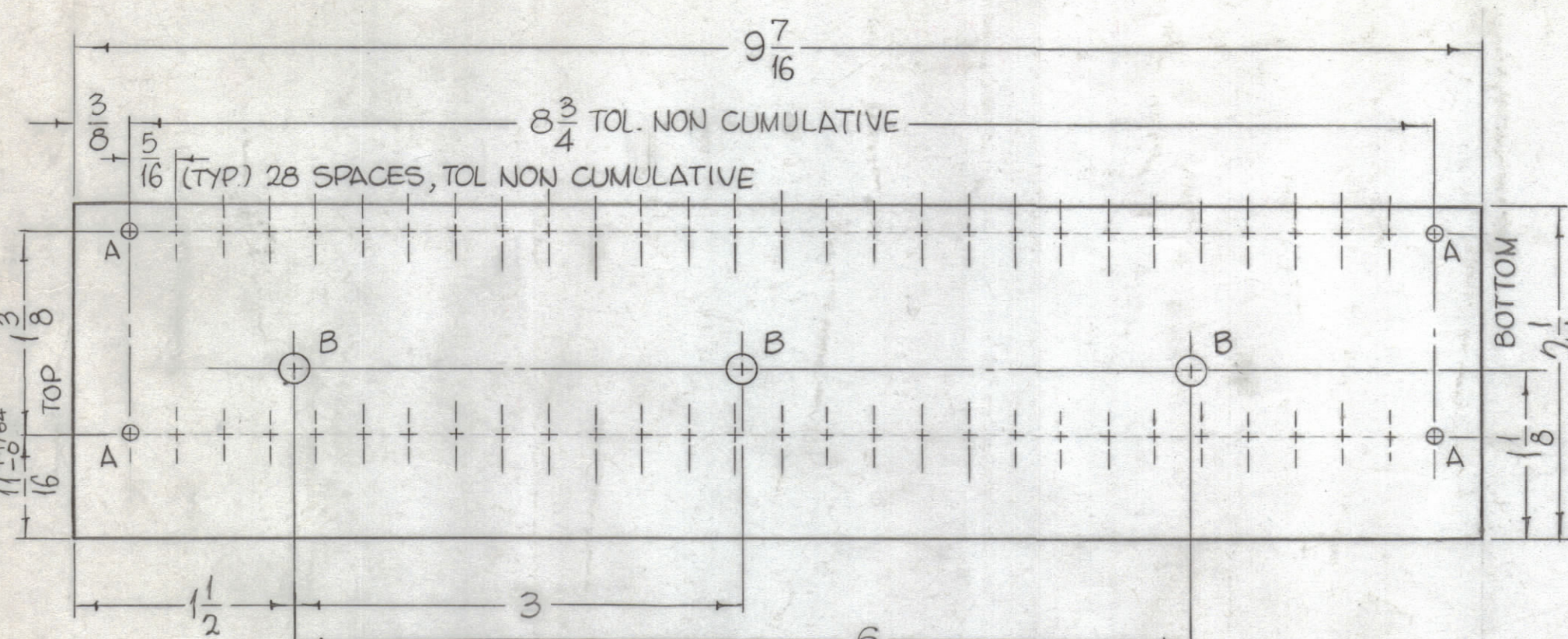
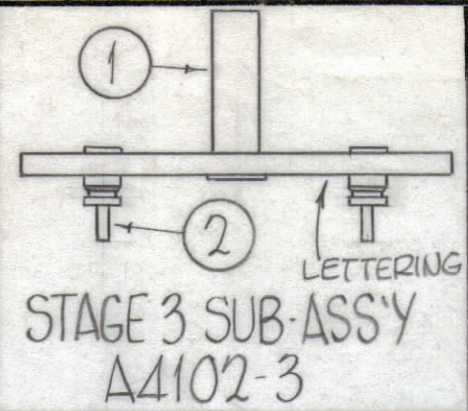


HOLES REQ. MAT'L 1/8 THICK G11 EPOXY, NATURAL

A-.115 DIA. 58  
B-.189 DIA.  $\pm .003$  3

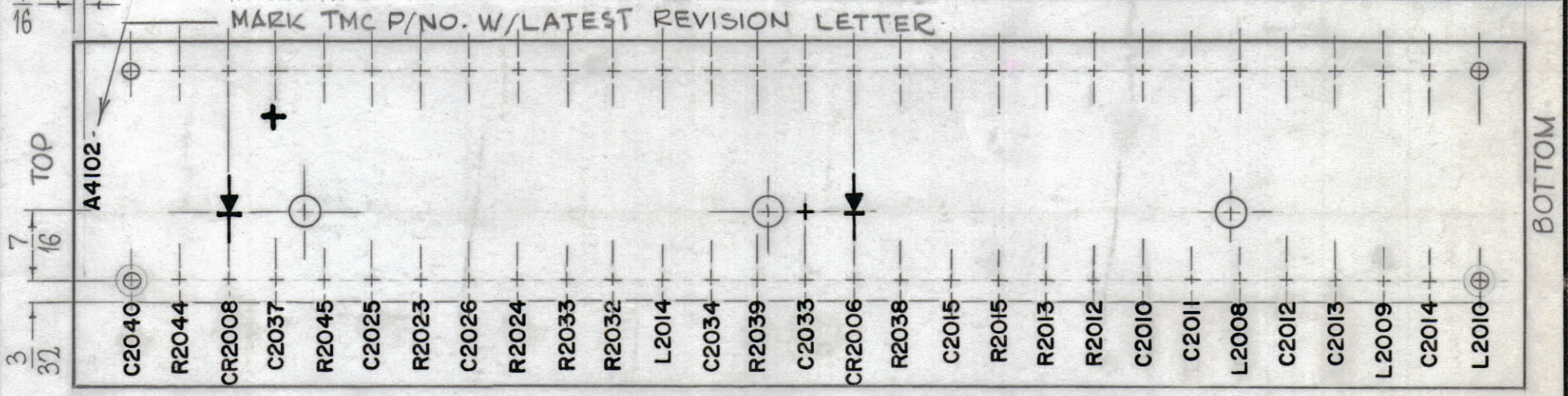


STAGE 1 - MACHINING A4102-1



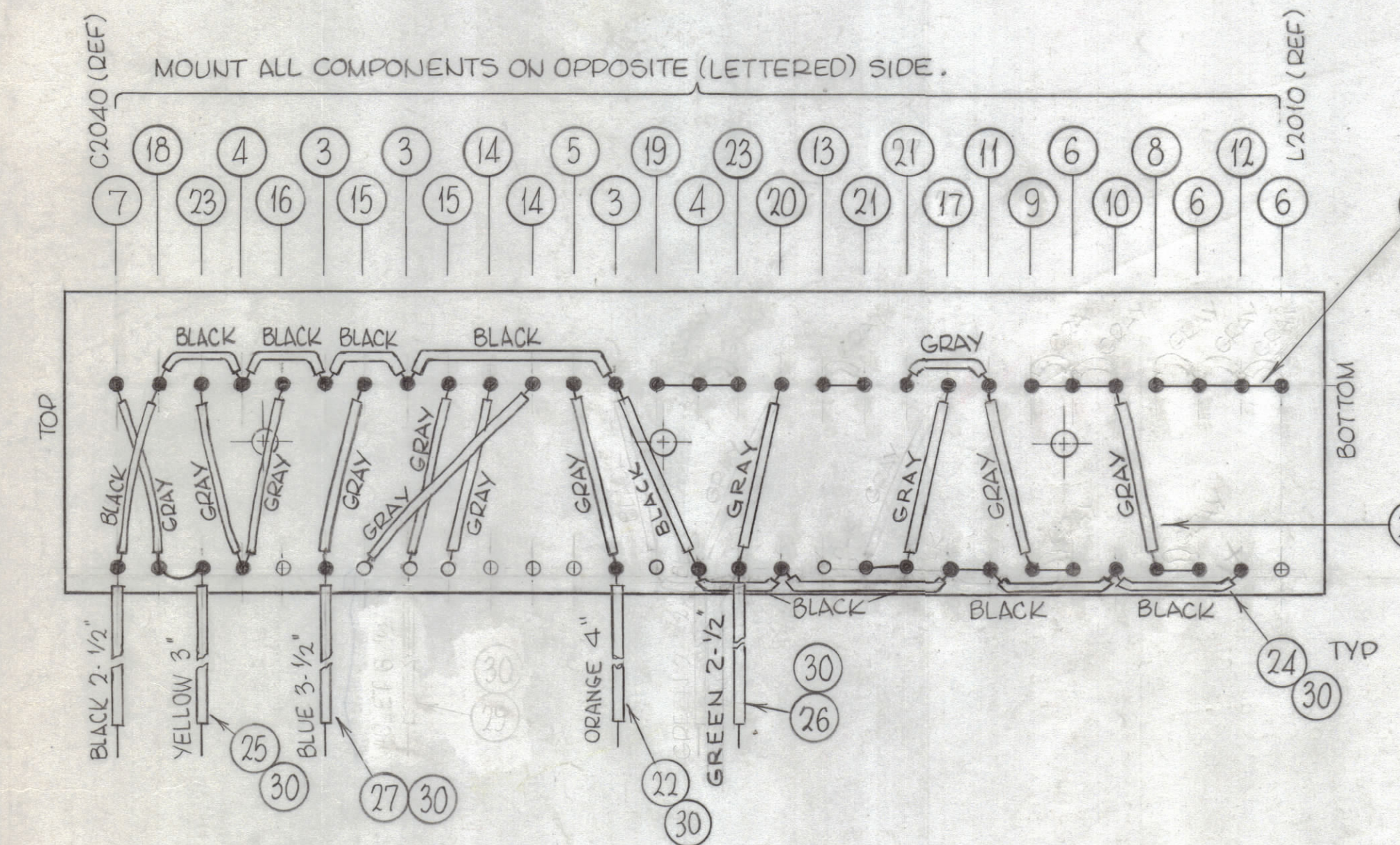
STAGE 3 SUB-ASS'Y A4102-3

REVISIONS						
ZONE	SYM	DESCRIPTION	DATE	E.M.N. NO.	DRAFT	CHKD
C5,6	X1	REVISED JUMPER CONNECTIONS	2/23/65		JL	
	X2	ITEM 17 WAS RC20GF180J, ITEM 21 ADDED	11-11-65	X2		
		ITEM 21 ADDED ITEM 17 ITEM 22 SWITCHED				
		ITEM 21 WAS RC30GF180J, STAGE 2 (REV NO. ADD TO P/N)				
		ORIGINAL RELEASE FOR PRODUCTION	4/16/65		H.V.	
	A	MATERIAL THICKNESS 1/8 WAS 3/32	12/16/65	15405	Z.V.	
	B	ON B/M ITS. 16 THRU 20, 22, 24 THRU 29 UPDATED	2-23-66	15831	HLA	
	C	JUMPER ADDED BETWEEN R2044 & CR2008	4-5-66	16061	C.D.L.	
	D	ON B/M ITEMS. 7 THRU 12 UPDATED. A5309 ADDED	12-16-66	17513	WHW	
	E	IT 29 & 30 ON PICT & IT 29 ON B/U DELETED	5-24-76	21388	GDL	
		ADDED (+) SIGN TO C2037				



UNLESS OTHERWISE SPECIFIED MARKING PROCESS AS PER TMC SPEC. 5727. LETTERING 3/32 HIGH WHITE GOthic.

STAGE 2 - MARKING A4102-2



● DENOTES SOLDER POINT.  
○ DENOTES NO SOLDER.

X	31	B5100	SOLDER SOFT	
X	30	WL100-7	WIRE, BUSS BAR, TINNED	
X	29	DELETED		
X	28	PX104-7-034	INSULATION, SLVG, ELECT	GRAY
X	27	-6-		BLUE.
X	26	-4-		GREEN
X	25	-2-		YELLOW
X	24	PX104-1-034	INSULATION, SLEEVING, ELECT.	BLACK
2	23	IN67	DIODE	CR2006, CR2008
X	22	PX104-3-034	INS, SLVG, ELECT.	ORANGE
2	21	RC32GF180J	RESISTOR, FIXED, COMPOSITION (INSUL)	R2015, R2013
1	20	RC20GF562J		R2038
1	19	RC20GF333J		R2039
1	18	RC20GF272J		R2044
1	17	RC42GF680J		R2012
1	16	RC20GF224J		R2045
2	15	RC20GF223J		R2023, R2024
2	14	RC20GF105J	RESISTOR, FIXED, COMPOSITION (INSUL)	R2032, R2033
1	13	CN114-R47-4-J	CAPACITOR	C2015
1	12	CM35F682G03	CAPACITOR, FIXED, MICA DIELECTRIC	C2014
1	11	CM35F512G03		C2010
1	10	CM35F752G03		C2012
1	9	CM100-9		C2011
1	8	CM100-14		C2013
1	7	CM15F101G03	CAPACITOR, FIXED, MICA DIELECTRIC	C2040
3	6	CL270-15	COIL, RF FIXED, MOULDED	L2008, L2009, L2010
1	5	CL226-5	CHOKE, RF	L2014
2	4	CE105-5-50	MINIATURE, ELECTROLYTIC CAPACITOR	C2033, C2037
3	3	CC100-32	CAPACITOR, FIXED, CERAMIC DISC	C2025, C2026, C2034
58	2	TE109-3	SPLIT TERMINAL LUG	
3	1	TE108-24	STANDOFF, RIVET TYPE	

BUDETTI LIST OF MATERIAL

MATERIAL: M

FINISH: M

THE TECHNICAL MATERIEL CORP.  
MAMARONECK, NEW YORK

TITLE: TERMINAL BOARD ASS'Y, R.S.

UNLESS OTHERWISE SPECIFIED DIMENSIONS ARE IN INCHES AND INCLUDE CHEMICALLY APPLIED OR PLATED FINISHES

DECIMALS: .X ± .05, .XX ± .01, .XXX ± .005  
FRACTIONS: ± 1/64  
TOLERANCES: ANGLES ± 0° 30'

DRAWN: John C. Biele 1/4/65  
CHECKED: JCB 6-24-65  
ELECT. DES. [Signature]  
MECH. DES. [Signature]

DATE: 1/4/65  
DATE: 6-24-65  
DATE: [Blank]

FINAL APPROVAL: [Signature]  
DATE: 1/1/65

A4102 E

REPROVAL NO. 4401 16108

QTY./UNIT	MODEL USED ON	ASS'Y. NO.
1	VLLA-1	A5329
SCALE: 1:1	CODE: A	

NOTES

THE CONTENTS OF THIS DRAWING ARE THE EXCLUSIVE PROPERTY OF THE TECHNICAL MATERIEL CORP. ITS UNAUTHORIZED USE OR REPRODUCTION IN WHOLE OR IN PART IS STRICTLY FORBIDDEN.