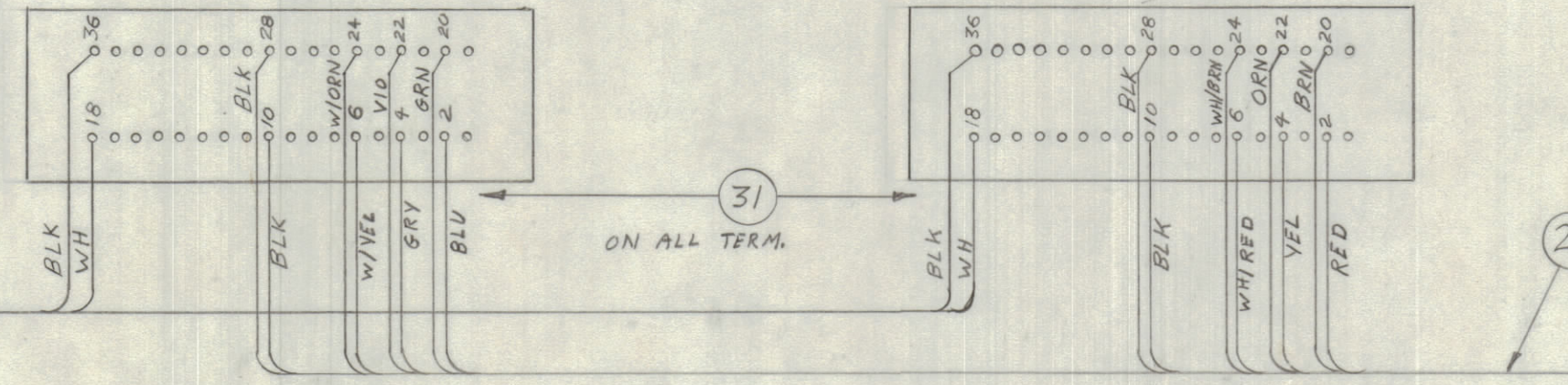
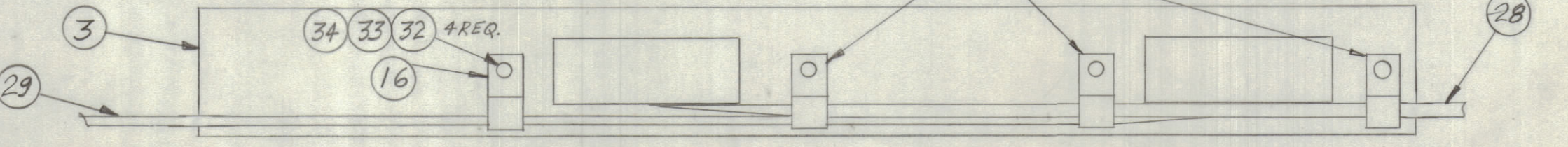
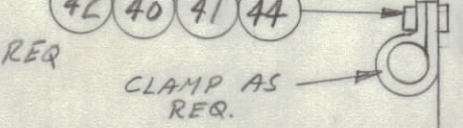
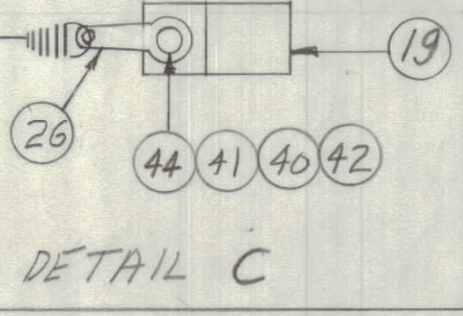
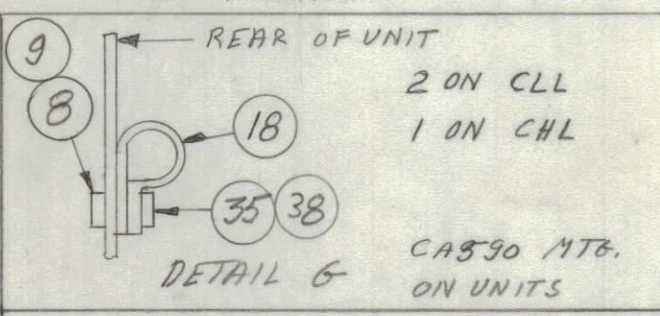
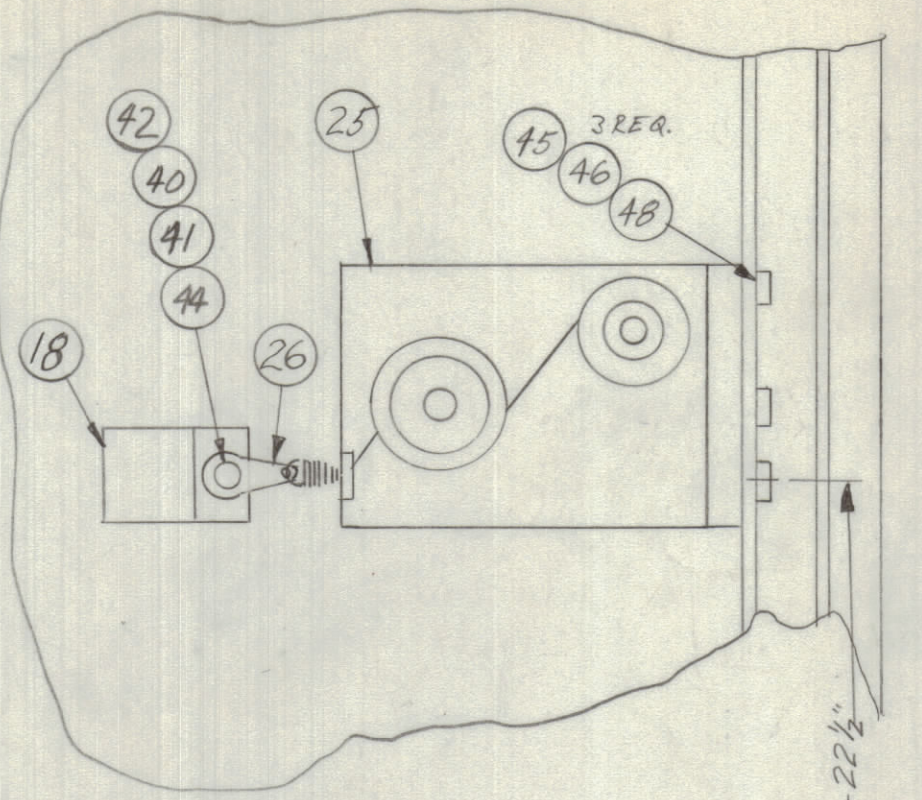
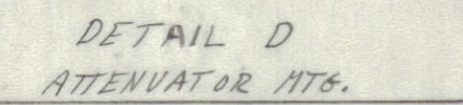
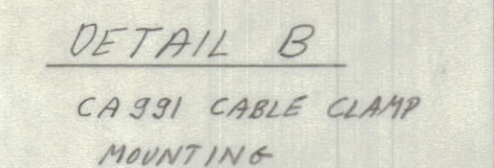
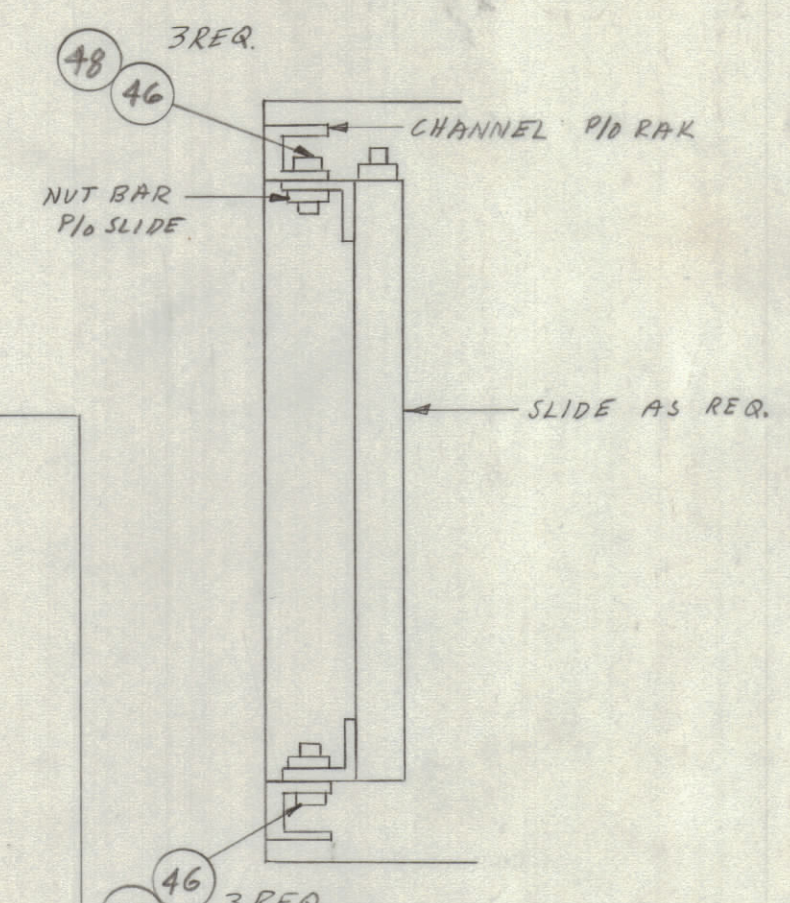
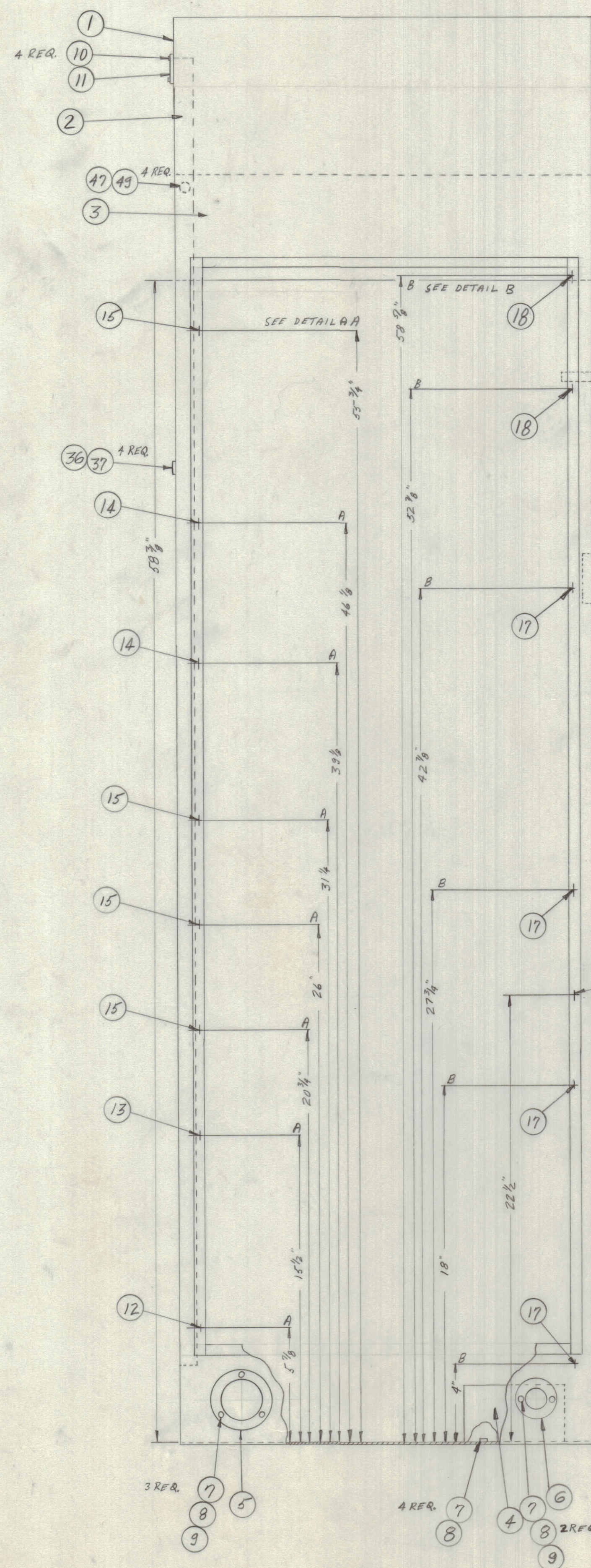


Not For Production



ASSEMBLY NOTE:
CONNECT CA 331 TO MODEL 539 + A4078 BEFORE MOUNTING IN RAK.

+ USED FOR BASE MTG. ONLY
* USED FOR SHOCK MTG. ONLY

REQD.	ITEM	PART NUMBER	DESCRIPTION	SYMBOL
6	57	LWS37MRN	WASHER, LOCK, SPLIT	
6	56	SCHH3716SN16	BOLT, MACHINE	
6	55	SH104-4TG	MOUNT, RESILIENT	
4	64	LWS37MRN	WASHER, LOCK SPLIT	
4	59	SCHH2716SN16	BOLT, MACHINE	
1	52	MS1901	BASE, ELECT. EQUIPMENT RACK	
1	51	A2079-B	FAN ASSY	
X	50	RS100	SOLDER, TIN ALY	
4	49	WA101-11	WASHER, FIBER	
99	48	SCAH1032SN8	SCREW, HEX HEAD	
4	47	SCBP1032BN8	SCREW, MACHINE	
99	46	LWE10MRN	LOCKWASHER, EXTERNAL	
3	45	NTH032BN12	NUT, HEX HEAD	
18	44	SCB P0832BN8	SCREW, MACHINE	
2	43	SCB P0832BN5	SCREW, MACHINE	
18	42	NTH0832BN10	NUT, HEX HEAD	
16	41	FW08HFN	WASHER, FLAT	
18	40	LWE08MRN	LOCK WASHER, EXTERNAL	
2	39	LW108MRN	LOCK WASHER, INTERNAL	
4	38	SCBP0632BN8	SCREW, MACHINE	
4	37	SCBP0632BN4	SCREW, MACHINE	
6	36	LW108MRN	LOCK WASHER, INTERNAL	
4	35	FW06HFN	WASHER, FLAT	
4	34	FW04HFN	WASHER, FLAT	
4	33	LWE04MRN	LOCKWASHER, EXTERNAL	
4	32	SCBP040BN8	SCREW, MACHINE	
12"	31	PX830-18-1	INS, SLUG, SHRINK	
3	30	CA 555-4	CABLE, AC POWER	
1	29	CA 745	CABLE, AC POWER	
1	28	CA 391	CABLE	
1	27	CA 530	CABLE	
2	26	TE104-3	LUG, TERMINAL	
1	25	A3517	ASSY, RETRACTOR SPRING	
1	24	A2048-1	ATTENUATOR ASSY	
1	23	MS1878	BRACKET, SPRING MTS.	
1	22	AS116	SPRING ASSY	
2	21	CU102-12	CLAMP, CABLE 3/4"	
5	20	CU102-10	CLAMP, CABLE 5/8"	
1	19	CU102-7	CLAMP, CABLE 1/2"	
7	18	CU102-6	CLAMP, CABLE 3/16"	
8	17	CU102-5	CLAMP, CABLE 3/16"	
1	16	CU102-2	CLAMP, CABLE 3/16"	
4	15	TK108-18	SLIDE, TILT	
2	14	TK107-18	SLIDE, TILT	
1	13	TK105-18	SLIDE, TILT	
1	12	TK106-18	SLIDE, STATIONARY	
1	11	NP103-42	NAME PLATE	
4	10	SFBN258SN3	SCREW, SELF TAPPING	
8	9	NTH0832BN8	NUT, HEX HEAD	
9	8	LWE08MRN	LOCKWASHER, EXTERNAL	
7	7	SCBP0632BN6	SCREW, MACHINE	
1	6	JT100	CONNECTOR, RECEPTACLE, MALE	
1	5	JT287	CONNECTOR, RECEPTACLE, MALE	
1	4	A4078	ASSEMBLY, LINE FILTER, AUDIO	
1	3	MODEL 539	SHELF, EQUIPMENT	
1	2	AX547	AC POWER STRIP	
1	1	MS4136	CABINET, ELECTRICAL EQUIPMENT	

MATERIAL		THE TECHNICAL MATERIEL CORP.	
FINISH		MAMARONECK, NEW YORK	
TITLE		FINAL ASSEMBLY	
DRAWN		DATE	
CHECKED		DATE	
ELECT. DES.		DATE	
MECH. DES.		DATE	
QTY/UNIT	MODEL USED ON	ASSY. NO.	
SCALE	CODE		
UNLESS OTHERWISE SPECIFIED DIMENSIONS ARE IN INCHES AND INCLUDE CHEMICALLY APPLIED OR PLATED FINISHES			
DECIMALS	± .08	FRACTIONS	± 1/64
XXX ± .01		ANGLES	± 0° 30'
XXX ± .005		TOLERANCES	± 0° 30'
THE CONTENTS OF THIS DRAWING ARE THE EXCLUSIVE PROPERTY OF THE TECHNICAL MATERIEL CORP. ITS UNAUTHORIZED USE OR REPRODUCTION IN WHOLE OR IN PART IS STRICTLY FORBIDDEN.			
NOTES		REV. LTR.	
		A4083	
		XI	

A4083