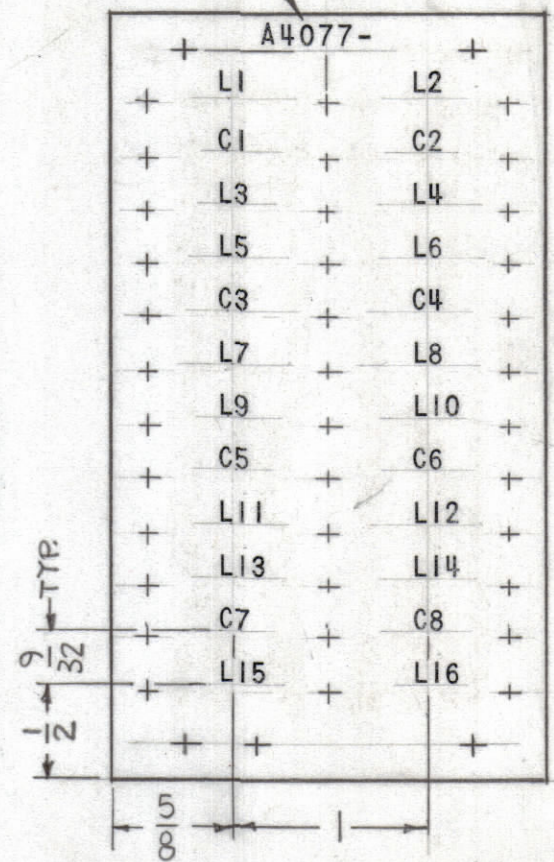


MAT'L
3/32 THICK,
EPOXY, G11

HOLES
UNMARKED- .116 DIA (36 REQ)
"A" - .189 DIA (4 REQ)
"B" - .189 DIA (1 REQ)

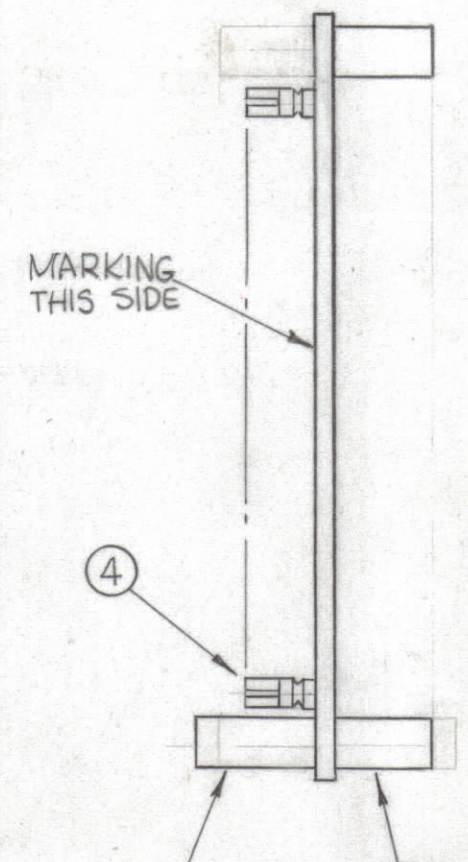
A4077-1 MACHINING

MARK TMC P/N WITH
LATEST REV. LETTER



FUNGUS PROOFING AS PER TMC SPECIFICATION S113.
AFTER LETTERING.
MARKING PROCESS: AS PER TMC SPECIFICATION S727
LETTERING: 1/8 HIGH BLACK GOTHIC, LOCATED AS SHOWN

A4077-2 MARKING



MARKING THIS SIDE

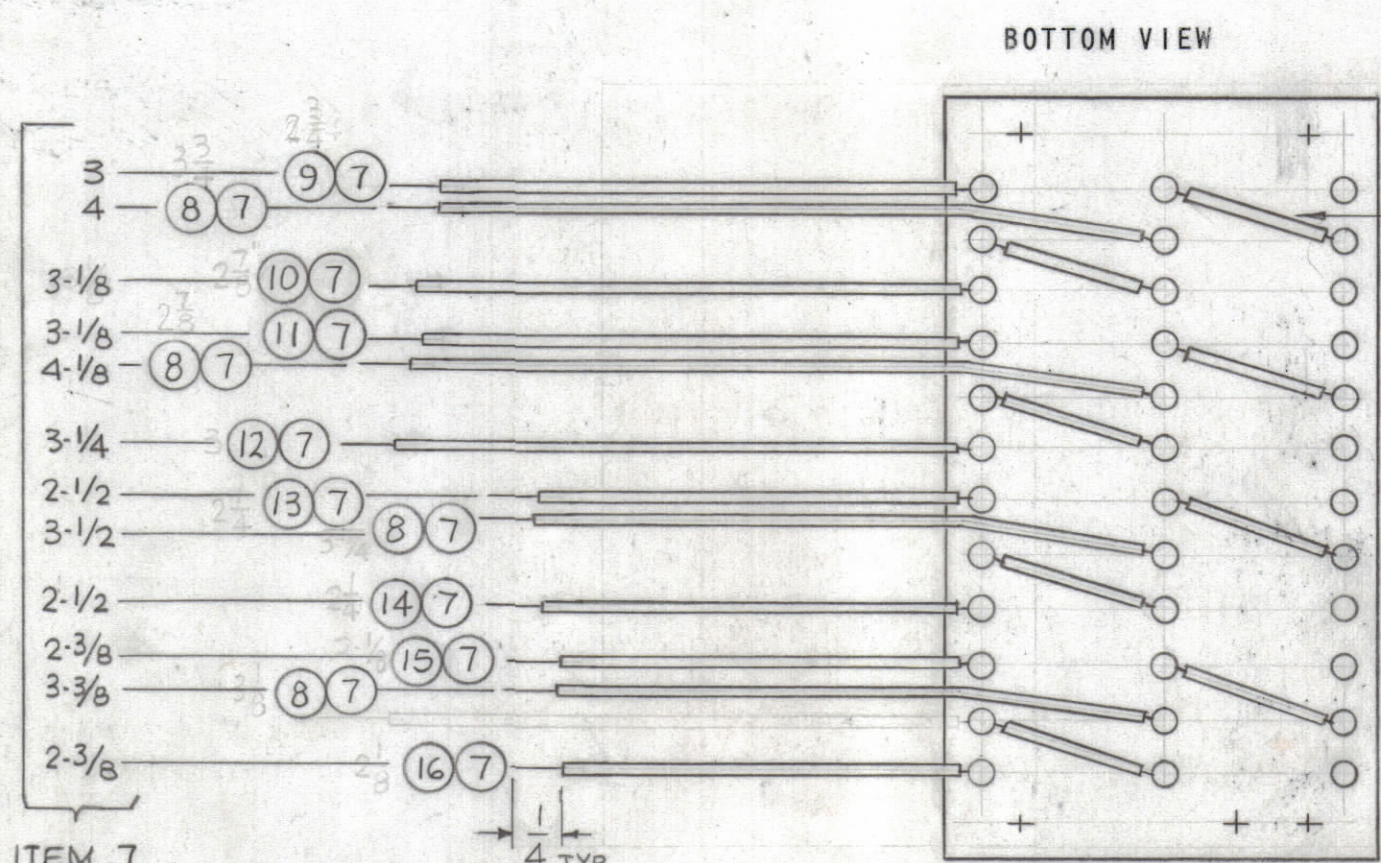
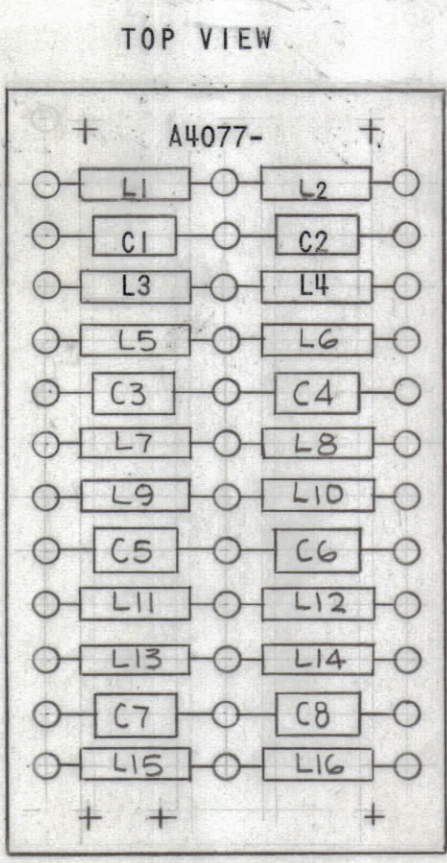
4 MOUNT IN ALL "A" HOLES AS SHOWN

3 MOUNT IN ALL "B" HOLES AS SHOWN

2 MOUNT IN ALL "A" HOLES AS SHOWN

A4077-3 SUB-ASSEMBLY

| REVISIONS | | | | | | |
|-----------|-----|---------------------------------------|---------|----------|-------|-----------|
| ZONE | LTR | DESCRIPTION | DATE | E.M.N.NO | DRAFT | CHKD APPD |
| | X1 | IT. 6 WAS CM15F511J, IT 1 WAS A4077-1 | 2-14-67 | | LAK | |
| | X2 | REDRAWN | 4-4-67 | | | |
| | Ø | ORIGINAL RELEASE FOR PRODUCTION | 4-6-67 | Ø | CV | |



ITEM 7
DIMENSIONS

A4077-4 FINAL ASSEMBLY

C1 THRU C8 8 6 CM15F511J03
L1 THRU L16 16 5 CL270-10

| | | | | |
|----|-------------|---------------------------------|--|----------|
| 17 | BS100 | SOLDER, TIN ALLOY | | |
| 16 | PX104-7-034 | INS SLVG SZ 20 GRAY | | |
| 15 | -9 | VIOLET | | |
| 14 | -6 | BLUE | | |
| 13 | -4 | GREEN | | |
| 12 | -2 | YELLOW | | |
| 11 | -8 | ORANGE | | |
| 10 | -3 | RED | | |
| 9 | -5 | BROWN | | |
| 8 | PX104-1-034 | INS SLVG SZ 20 BLACK | | |
| 7 | WL100-7 | WIRE, BUSS SZ 22 | | |
| 6 | CM15F511J03 | CAPACITOR, FXD, MICA DIELECTRIC | | |
| 5 | CL270-10 | COIL, RF | | |
| 4 | TE109-2 | TERM, STUD | | UNMARKED |
| 3 | TE108-16 | NUT, PLN CLINCH | | B |
| 2 | TE108-20 | NUT, PLN CLINCH | | A |
| 1 | DELETED | | | |

| QTY. REQ. | ITEM | PART NO. | DESCRIPTION | SYMBOL |
|-----------|------|----------|-------------|--------|
|-----------|------|----------|-------------|--------|

| F. BUDETTI LIST OF MATERIAL | | | | |
|-----------------------------|--|---------|------------------------------|----------|
| FINAL APPROVAL | | DATE | THE TECHNICAL MATERIEL CORP. | |
| MECH. DES. | | DATE | MAMARONECK, NEW YORK | |
| ELECT. DES. | | DATE | TERMINAL BOARD ASS'Y | |
| CHECKED | | DATE | | |
| DRAWN | | DATE | | |
| MATERIAL | | SIZE | CODE IDENT. NO. | DWG NO. |
| FINISH | | C 82679 | | A4077- |
| | | SCALE | 1:1 | SHEET OF |

| QTY / UNIT | MODEL USED ON | ASS'Y NO. |
|-------------|---------------|-----------|
| 1 | RAK-20B | A4078 |
| APPLICATION | | |
| S401-451 | CODE S401- | |
| S401- | A | |

NOTICE TO PERSONS RECEIVING THIS DRAWING
THE TECHNICAL MATERIEL CORPORATION claims proprietary right in the material disclosed hereon. This drawing is issued in confidence for engineering information only and may not be reproduced or used to manufacture anything shown hereon without permission from THE TECHNICAL MATERIEL CORPORATION to the user. This drawing is loaned for mutual assistance and is subject to recall at any time.